

1-1-1898

Wofford College Illustrated, 1898

Wofford College

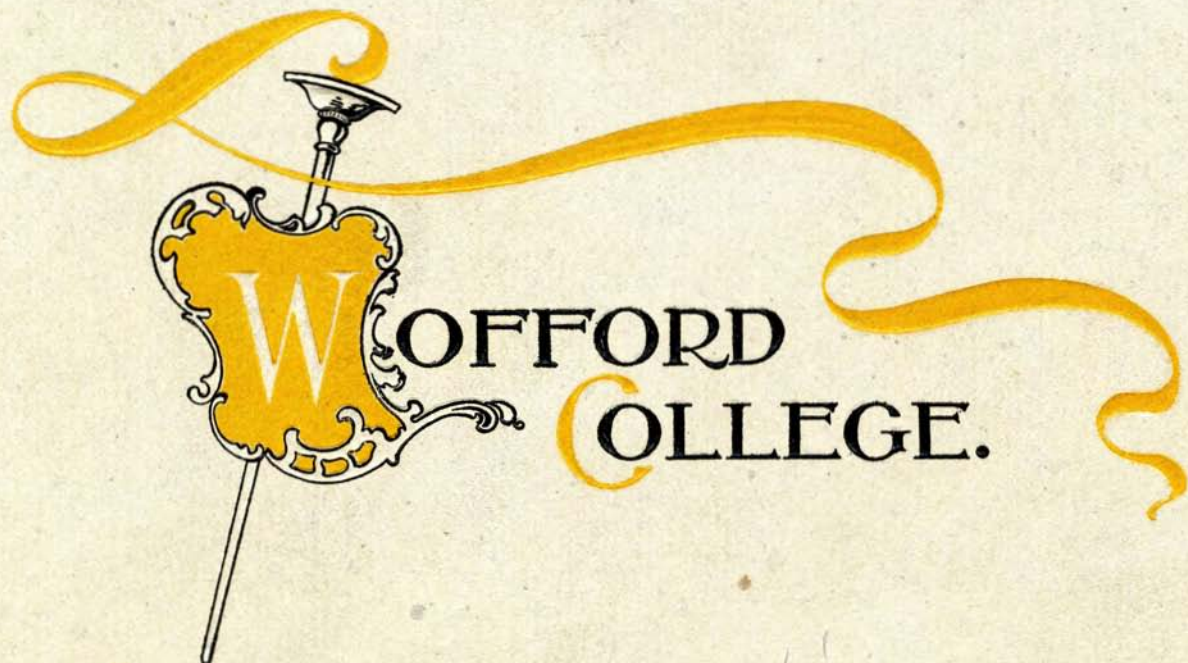
Follow this and additional works at: <http://digitalcommons.wofford.edu/collegebooks>

Recommended Citation

Wofford College, "Wofford College Illustrated, 1898" (1898). *College Books*. Book 5.
<http://digitalcommons.wofford.edu/collegebooks/5>

This Book is brought to you for free and open access by the College Archives at Digital Commons @ Wofford. It has been accepted for inclusion in College Books by an authorized administrator of Digital Commons @ Wofford. For more information, please contact stonerp@wofford.edu.

WOFFORD COLLEGE LIBRARY
SPARTANBURG, S. C.



WOFFORD
COLLEGE.

ILLUSTRATED.

The First Board of Trustees

THE following is the inscription on the tombstone of the founder of Wofford College: ✽
"Entombed beneath are the mortal remains of the Rev. Benjamin Wofford, son of Joseph and Martha Wofford, who was born the 19th day of October, A. D. 1780, and departed this life, in the full triumphs of the Christian faith, the 2nd day of December, A. D. 1850, aged 70 years, 1 month, 13 days.

"For 48 years he was a member of the Methodist Episcopal Church; for 46 years a Minister of the Gospel. He gave to the country and the church an institution for the benefit of which countless thousands yet unborn may have reason to be thankful, and reverence the donor's name.

"Peace to his ashes."

Rev. H. A. C. Walker *
Rev. W. A. Gamewell *
Rev. T. R. Walsh
Rev. W. A. McSwain
Rev. C. Betts
Rev. C. S. Walker
Rev. J. R. Pickett

Simpson Bobo *
J. Wofford Tucker
Harvey Wofford
Dr. J. H. Dogan
Geo. W. Williams *
Robt. Bryce

* At one time President of the Board

COLLEGE

ALUMNI HALL



CHURCH STREET
CAMPUS (70 ACRES)—FROM CITY STANDPIPE



GEO. W. WILLIAMS,
THE ONLY SURVIVOR OF THE
ORIGINAL BOARD OF TRUSTEES
AND A BENEFactor ~



REV. BENJAMIN WOFFORD,
OUR FOUNDER -
1780 - 1850 -



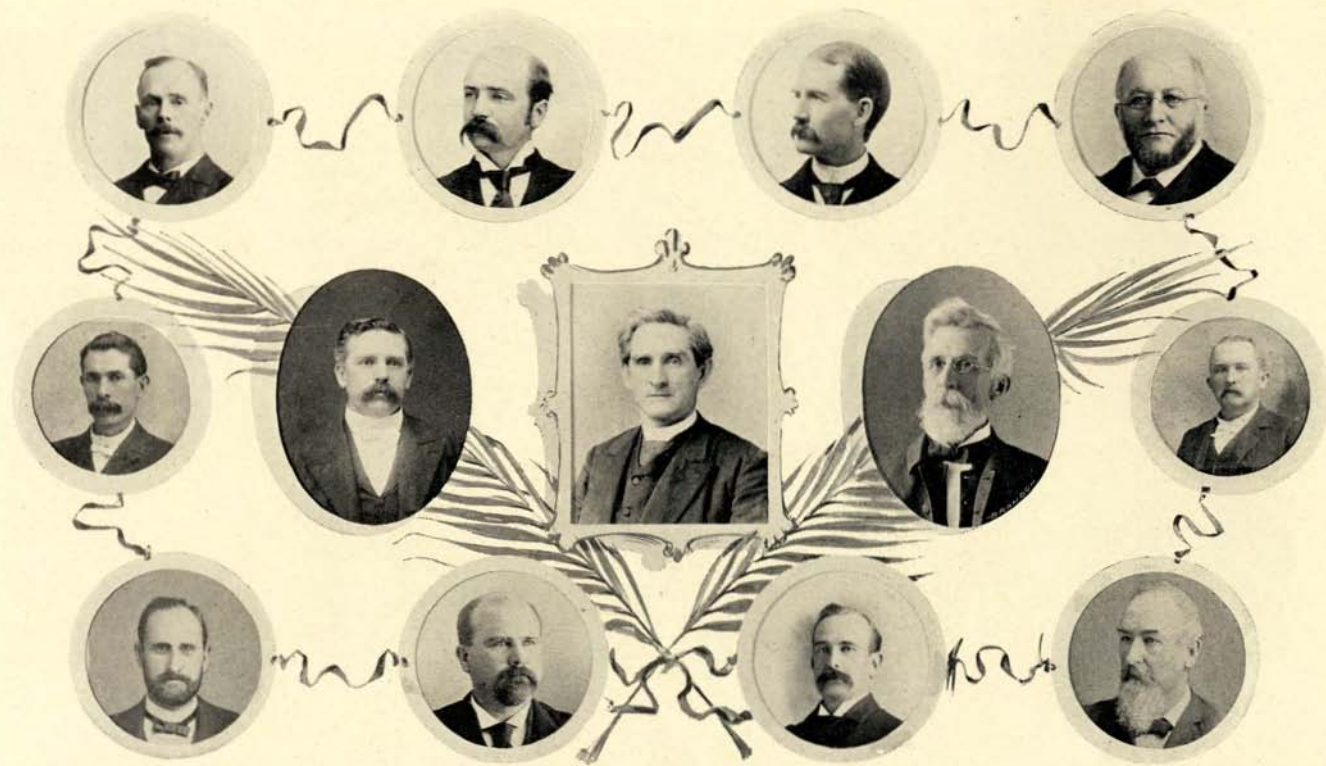
REV. J. R. PICKETT -
BENEFactor -
1814 - 1870 -



MAIN BUILDING—EAST



MAIN BUILDING—WEST



T. B. STACKHOUSE	GEO. E. PRINCE	JUDGE GEO. W. GAGE	DR. H. BAER
REV. W. A. ROGERS	REV. R. W. RICHARDSON	BISHOP W. W. DUNCAN, PRES.	REV. S. A. WEBER, D. D.
REV. J. E. CARLISLE	REV. E. T. HODGES	C. G. DANTZLER	J. K. JENNINGS, Sec. GEO. COFIELD, SR.



DANIEL A. DUPRÉ A.M.



J.A. GAMEWELL A.M.



H.A. SNYDER M.A.



REV. C. B. SMITH.



JAS. H. CARLISLE LL.D.
PRESIDENT.



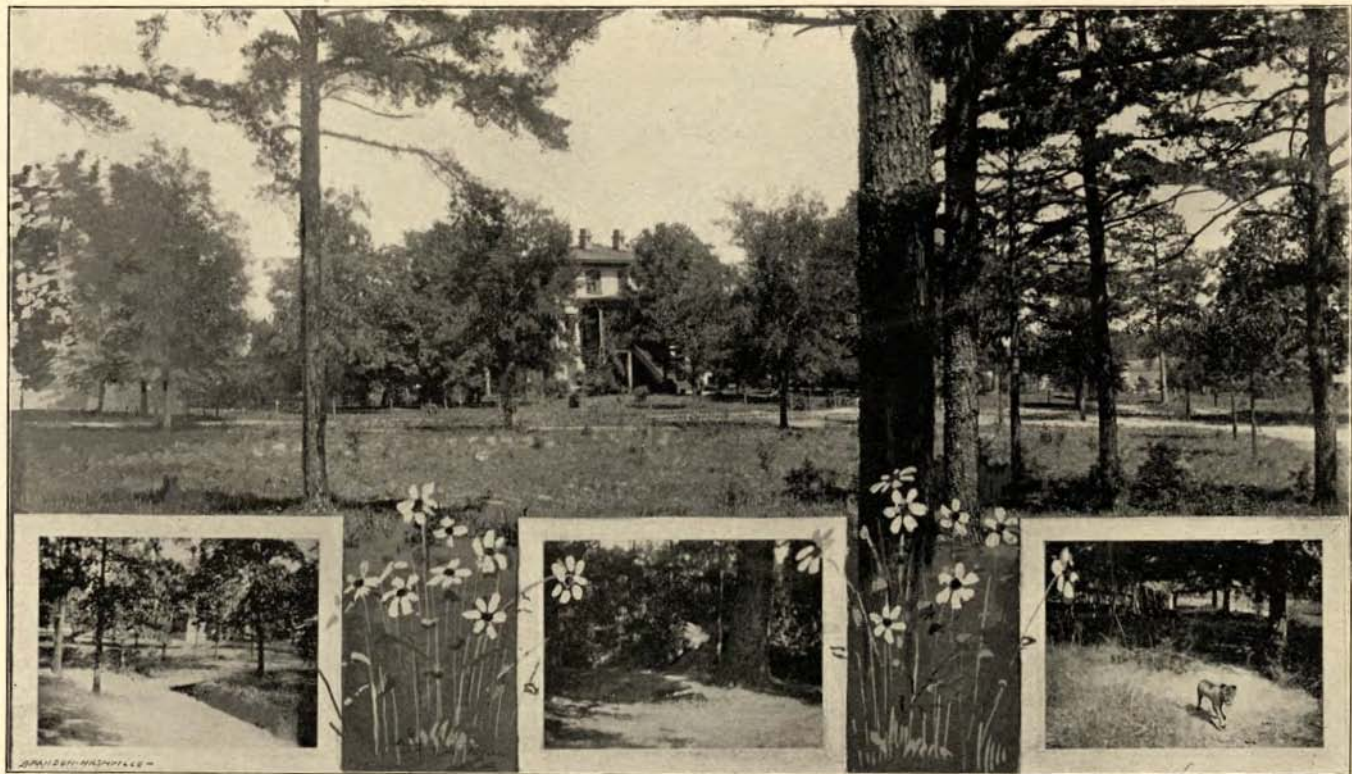
A.B. COOKE, B.A.



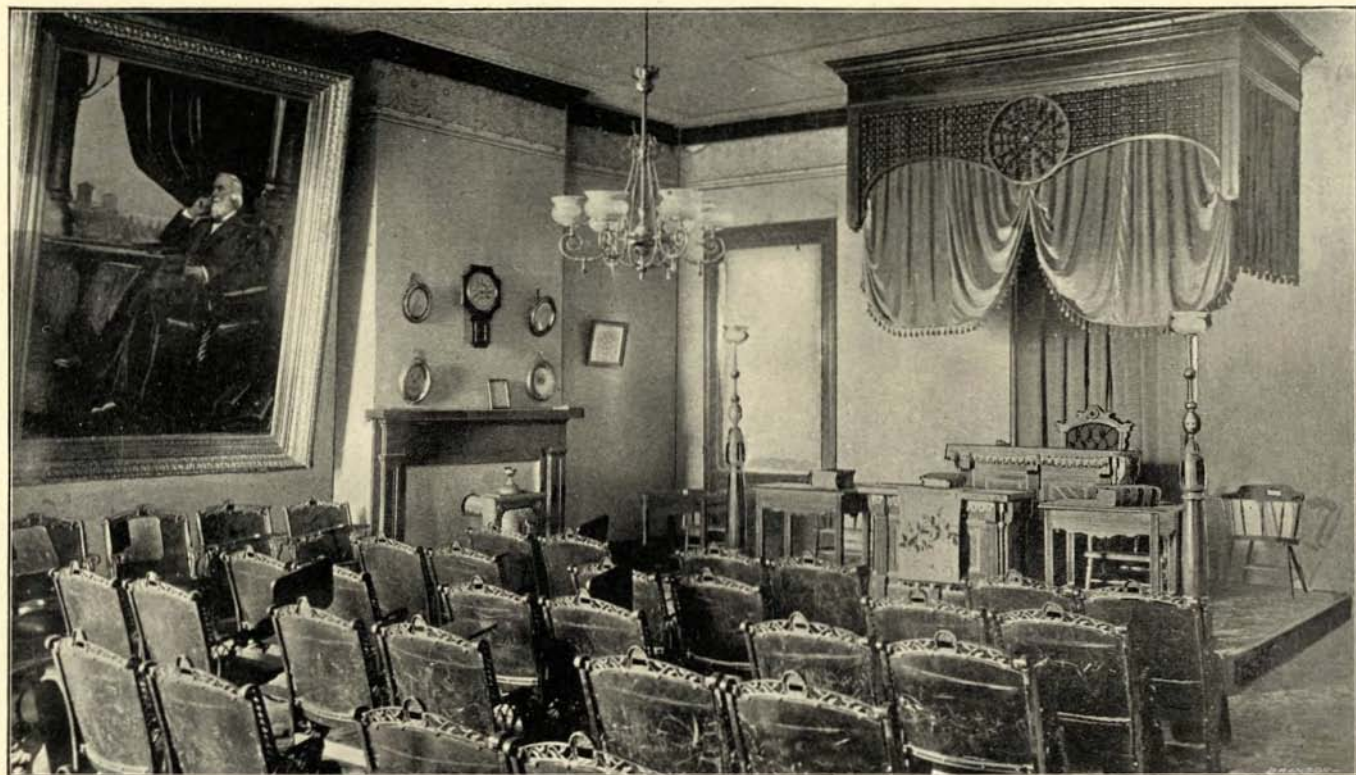
W.G. BLAKE A.M.



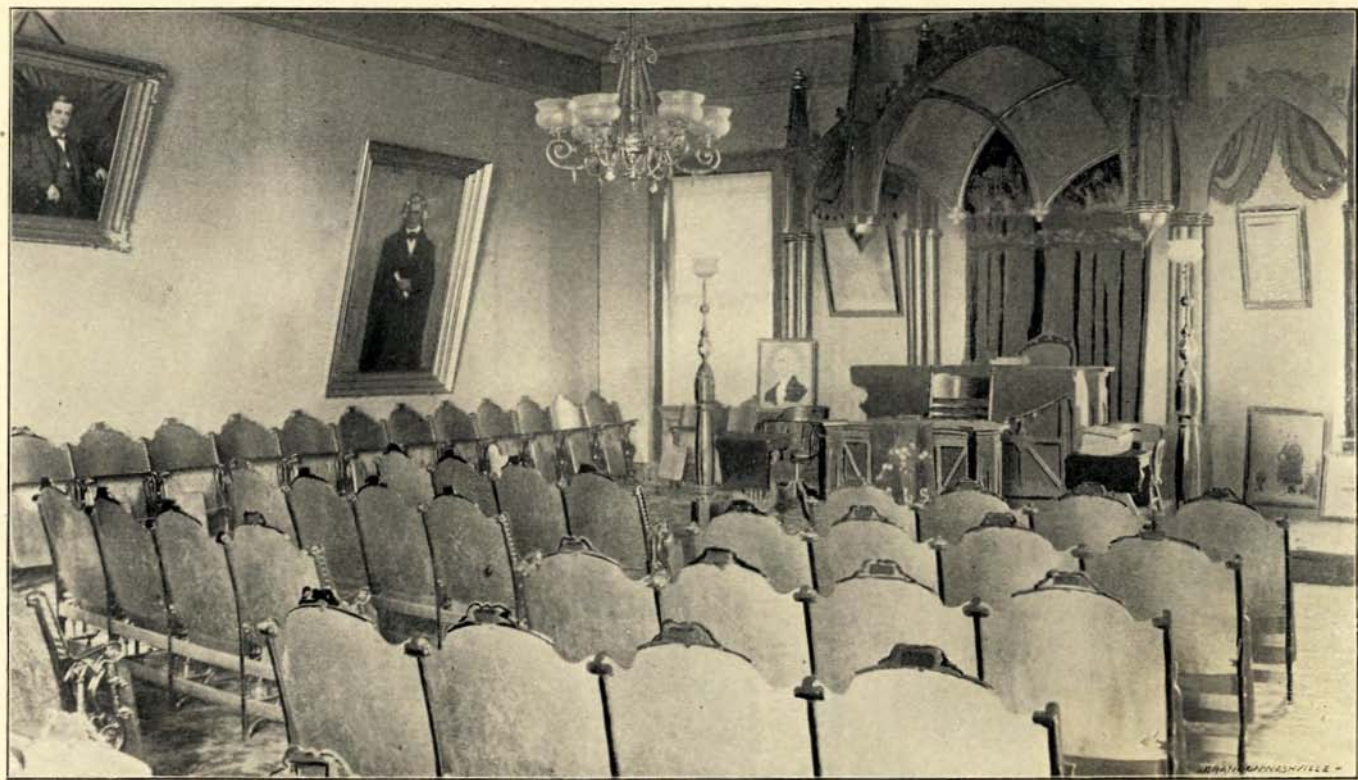
A. G. REMBERT A.M.



A PROFESSOR'S RESIDENCE AND THREE "SNAP-SHOTS"



HALL OF PRESTON LITERARY SOCIETY



HALL OF CALHOUN LITERARY SOCIETY



SENIOR CLASS, 1897-98



JUNIOR CLASS, 1897-98



ARCHER ROW—HOMES OF THE STUDENTS



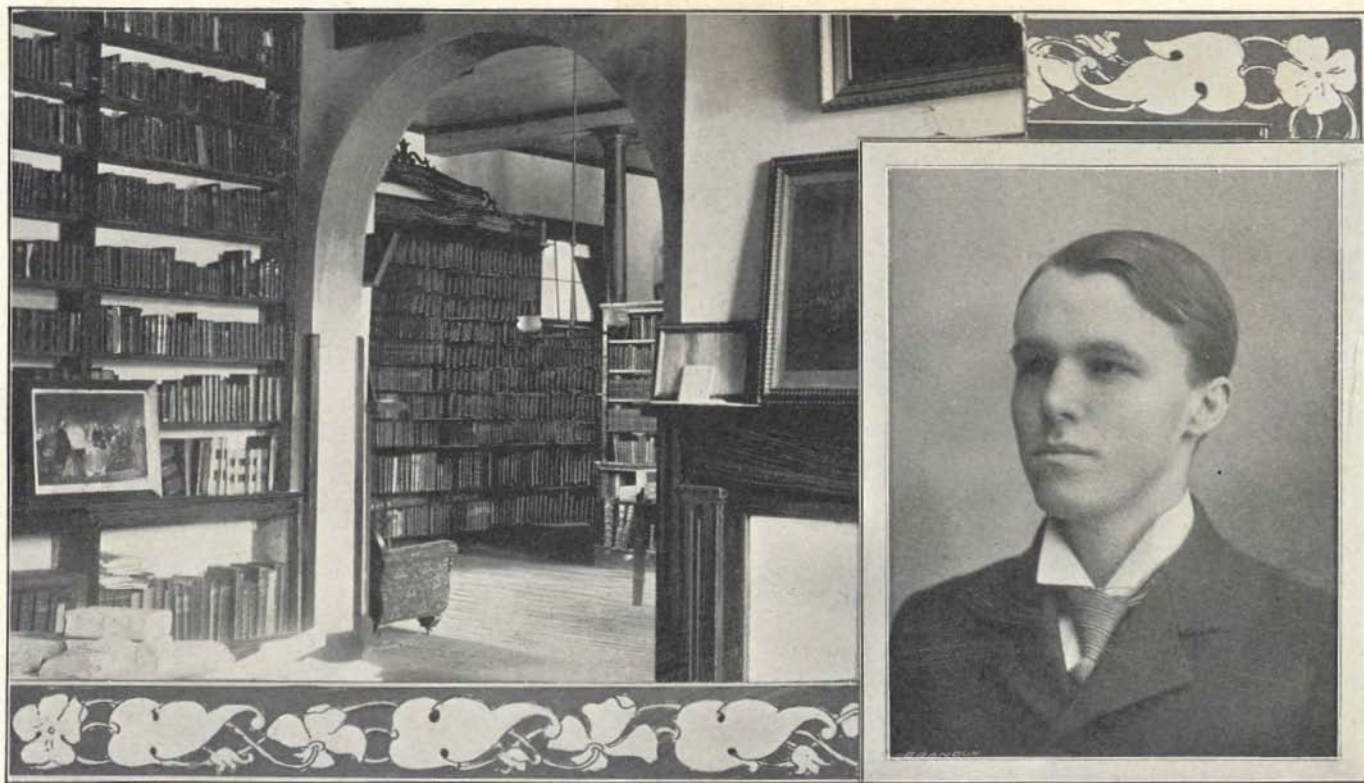
WIGHTMAN HALL



SOPHOMORE CLASS, 1897-98



A PROFESSOR'S RESIDENCE



LIBRARY

J. ESTERLING WALKER, A. B., LIBRARIAN



THROUGH THE PINES



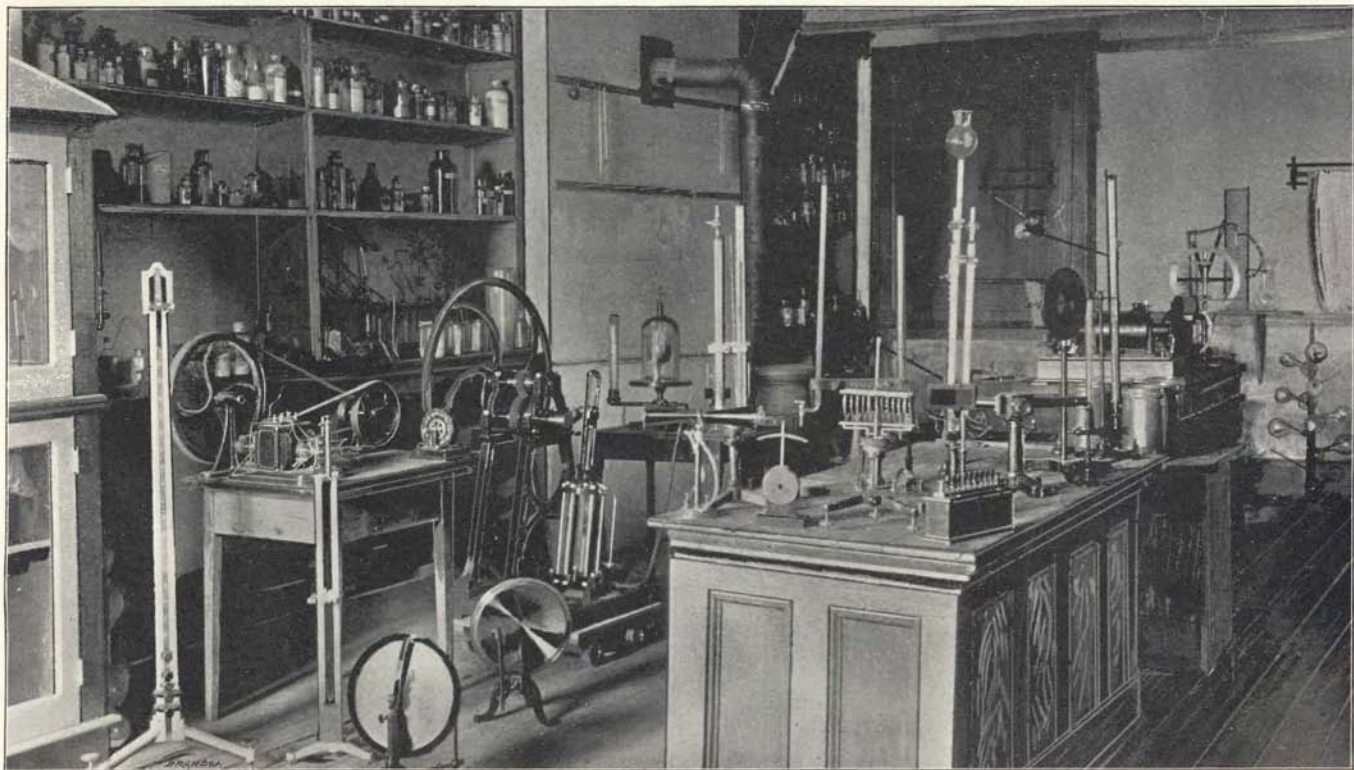
A. MASON DUPRE, A. M.
HEAD MASTER



WOFFORD FITTING SCHOOL, 1897-98



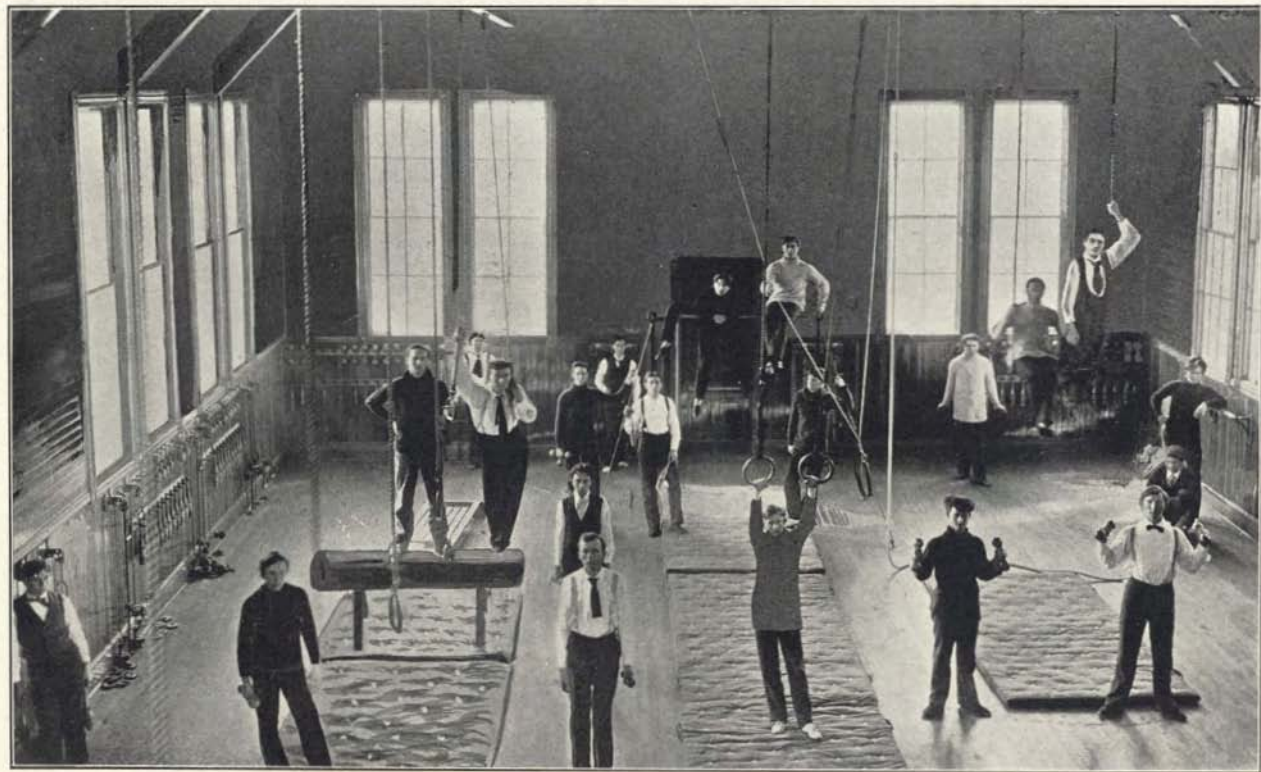
GUS M. CHREITZBERG, A. B.
INSTRUCTOR IN ENGLISH AND MATHEMATICS



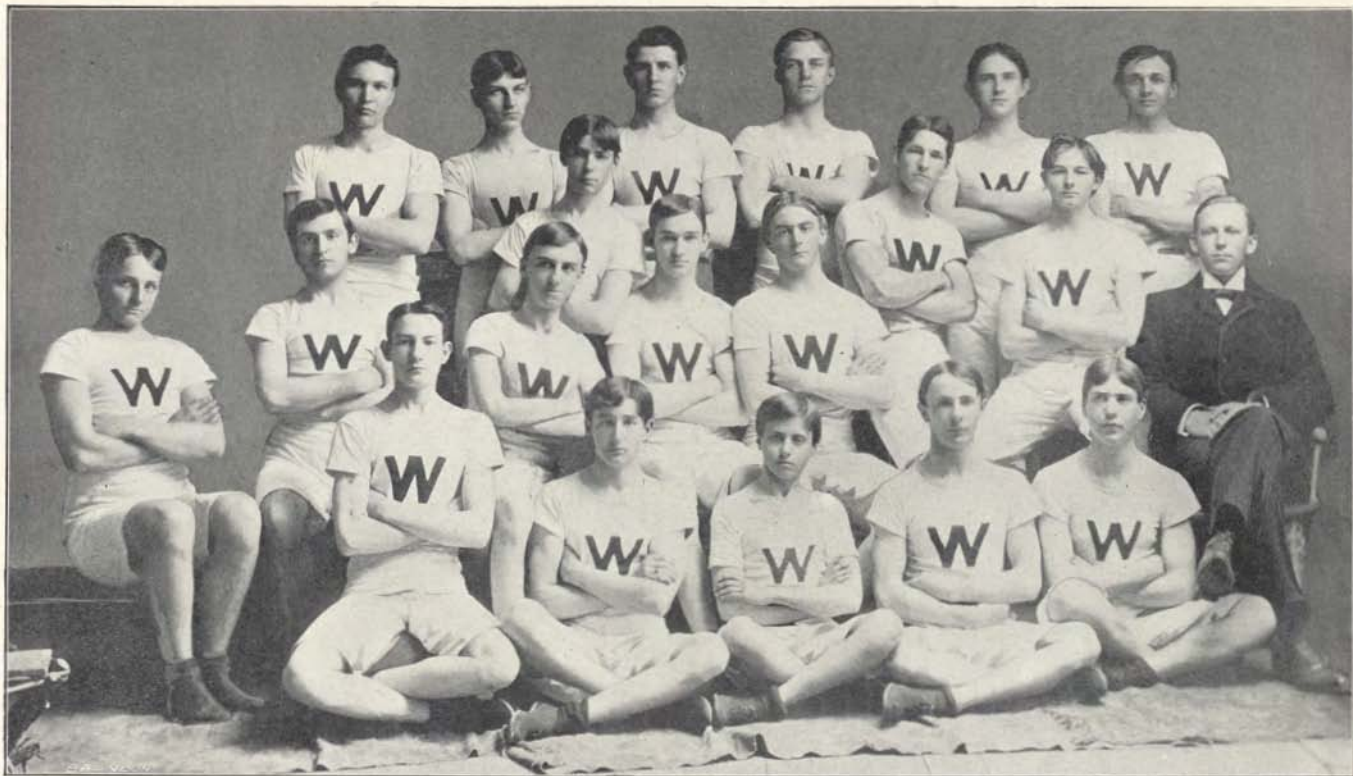
PHYSICAL AND CHEMICAL LECTURE ROOM



GYMNASIUM



INTERIOR OF GYMNASIUM



GYMNASIUM TEAM, 1897-98

GUS M. CHREITZBERG, A. B.
INSTRUCTOR IN GYMNASIUM



CENTRAL M. E. CHURCH, SOUTH, SPARTANBURG, S. C.



CENTRAL M. E. CHURCH, SOUTH-INTERIOR.

REV. M. L. CARLISLE, PASTOR



PARSONAGE OF CENTRAL M. E. CHURCH, SOUTH, SPARTANBURG, S. C.



DISTRICT PARSONAGE



REV. A. J. CAUTHEN, PRESIDING ELDER



RESIDENCE OF BISHOP W. W. DUNCAN (CLASS '58)
PRESIDENT OF BOARD OF TRUSTEES

Wofford College

SPARTANBURG, S. C.

JAS. H. CARLISLE, LL. D., PRES.

Forty-fifth year begins Sept. 29, 1898. ❁
Offers to students two Bachelor of Arts
Courses in the following departments: ❁
Mathematics and Astronomy; Physics,
Chemistry, and Geology; Latin, Greek,
Political Economy, and Philosophy; ❁❁
French and German; History. Expenses
for the collegiate year from \$150 to \$200.
This includes board, washing, room rent,
fuel, lights, tuition, books, and special fees.

For catalogue address ❁❁

J. A. GAMEWELL,
Secretary of Faculty.

Wofford College Fitting ...School...



The Alumni Hall, into which the Fitting School has been moved, is a four-story brick building, containing nineteen bedrooms, a large, well-lighted and ventilated dining-hall, etc. The Head Master and the Matron live in the building. The discipline of the school is kind but firm, and each student is given as much work as he can accomplish consistently with thoroughness and good health. Students are required to take a regular course of training at the Gymnasium, under the Director. ❁❁❁❁❁❁❁❁❁❁❁❁❁❁❁❁

For catalogue address ❁❁❁

A. MASON DuPRE,
Head Master,
Spartanburg, S. C.