

Wofford College

Digital Commons @ Wofford

Media Guides

Athletics

2012

Women's Tennis Media Guide 2012-13

Wofford College. Department of Athletics

Follow this and additional works at: <https://digitalcommons.wofford.edu/mediaguides>

Recommended Citation

Wofford College. Department of Athletics, "Women's Tennis Media Guide 2012-13" (2012). *Media Guides*. 11.

<https://digitalcommons.wofford.edu/mediaguides/11>

This Book is brought to you for free and open access by the Athletics at Digital Commons @ Wofford. It has been accepted for inclusion in Media Guides by an authorized administrator of Digital Commons @ Wofford. For more information, please contact stonerp@wofford.edu.

WOFFORD



sarah evans



julia paulson

2012 WOMEN'S TENNIS MEDIA GUIDE

1550 STUDENTS

331 ATHLETES

18 SPORTS

1 LETTER™

W

WOFFORD

WOFFORD

2012 WOMEN'S TENNIS MEDIA GUIDE



2012 SCHEDULE

TABLE OF CONTENTS

DATE	TIME	OPPONENT
Jan. 15	1:00 pm	Winthrop
Jan. 28	1:00 pm	at North Carolina A&T
Feb. 9	2:00 pm	USC Upstate
Feb. 11	3:00 pm	at UNC Asheville
Feb. 17	2:00 pm	Kennesaw State
Feb. 18	2:00 pm	at Charleston Southern
Feb. 24	2:00 pm	at Gardner-Webb
Feb. 26	12:00 pm	at Coastal Carolina
Mar. 1	2:00 pm	Charlotte
Mar. 4	11:00 am	UAB
Mar. 17	1:00 pm	at College of Charleston*
Mar. 22	2:00 pm	at Presbyterian College
Mar. 24	12:00 pm	Chattanooga*
Mar. 25	12:00 pm	Samford*
Mar. 28	3:00 pm	Furman*
Mar. 31	12:00 pm	at UNC Greensboro*
Apr. 1	1:00 pm	at Elon*
Apr. 5	3:00 pm	Appalachian State*
Apr. 7	11:00 am	at Georgia Southern*
Apr. 11	3:00 pm	Davidson*
Apr. 14	11:00 am	at Western Carolina*
Apr. 19-22	TBA	Southern Conference Tournament

Quick Facts	2
Media Information	3
Wofford.....	4-6
Richardson Building.....	7
Strength and Conditioning.....	8
Reeves Tennis Center	9
Head Coach Katie Hangstefer	10
2011-12 Roster	11-12
Player Bios	13-20
Support Staff.....	20
2011 Results/Stats	21-23
Year-by-Year Records.....	24
Season Records	25
All-Southern Conference	26
Honors and Awards	27
Year-by-Year Results	28-30
All-Time Division I Series Records.....	31
All-Time Roster	32
Spartanburg.....	33
The Southern Conference	34-35
Hall of Fame	36
Wofford Administration	37-39
Wofford Athletic Staff.....	40

*SOUTHERN CONFERENCE MATCHES



QUICK FACTS

GENERAL INFORMATION

Location	Spartanburg, S.C.
Founded.....	1854
Enrollment	1,550
Nickname.....	Terriers
Colors	Old Gold (PMS 873) and Black
Affiliation	NCAA Division I
Conference	Southern
President.....	Dr. Benjamin B. Dunlap
Athletics Director	Richard Johnson
Faculty Athletic Rep	Dr. Jameica Hill
Facilities	Reeves Tennis Center
Opened	1992
Athletic Department Phone.....	864-597-4090
Athletic Department Fax	864-597-4129
Mailing Address	429 North Church Street
.....	Spartanburg, S.C. 29303

CAMPUS ADMINISTRATION

President:	Dr. Benjamin B. Dunlap (University of the South '59)
Faculty Athletic Representative:	Dr. Jameica Hill (Wofford '88)
Athletic Director:	Richard Johnson (The Citadel '76)
Athletic Department Phone:	(864) 597-4090
Mailing Address:	429 N. Church Street, Spartanburg, SC 29303
Athletics Web Site:	www.woffordterriers.com

TENNIS STAFF

Head Coach	Katie Hangstefer
Alma Mater	Chattanooga '02
Seasons at Wofford.....	4th in 2012
Tennis Office Phone.....	864-597-4150
Coach Hangstefer's Email	hangsteferk@wofford.edu

TEAM INFORMATION

2010-11 Overall Record	10-15
Home Record.....	7-6
Away Record	1-7
Neutral Record	2-2
SoCon Record	2-8
Letterwinners Returning/Lost.....	5/4
Starters Returning/Lost.....	5/4
Newcomers	5

TENNIS HISTORY

Number of Seasons	26th season in 2012
All-Time Record	217-219 (.498)
First Season.....	1986-87
Overall SoCon Record	40-87(.315)

ATHLETIC ADMINISTRATION

Athletic Director	Richard Johnson
Associate AD/Development.....	Terri Lewitt
Associate AD/Sports Programs	Mark Line
Assistant AD/Media Relations	Brent Williamson
Assistant AD/Marketing and Promotions	Lenny Mathis
Assistant AD/Development and Major Gifts	Al Clark
Assistant AD/Compliance	Elizabeth Rabb
Director of Facilities.....	Andy Kiah
Director of Video Services.....	Russ Bradley
Sports Marketing/IMG College	Justin Crouch
Business and Operations Manager	Ann Hopkins
Asst. Athletic Media Relations Director.....	Kevin Young
Sports Information Assistant.....	Ryan Bridges
Marketing and Promotions Assistant	Charlie Coon
Marketing and Promotions Assistant	Chelsie Hilbourn
Compliance Assistant	Travis Thornberry
Facilities Assistant.....	Daigo Yazawa
Ticket Manager	Shelby Taylor
Administrative Assistant	Caroline Thomas
Administrative Assistant - Football	Traci Wilson
Administrative Assistant - Coaches.....	Dana Mason



Wofford College was founded in 1854. The colleges' mascot is "Boss" the Terrier.

CREDITS

The 2012 Wofford College women's tennis media guide is a publication of the Wofford athletic media relations office. Editor: Ryan Bridges. Editorial assistance provided by Brent Williamson and Katie Hangstefer. Research conducted by Phillip Stone of the Wofford Library Archives. Photographs provided by Willis Glassgow, Mark Olencki, and Ryan Bridges. Headshots by Mark Olencki.

WOFFORD COLLEGE MISSION STATEMENT

Wofford's mission is to provide superior (quintessential) liberal arts education that prepares its students for extraordinary and positive contributions to society. The focus of Wofford's mission is upon fostering commitment to excellence in character, performance, leadership, service to others, and life-long learning.



MEDIA

INTERVIEWS

All interviews with members of the team during the season must be arranged through the Athletic Media Relations Office. Please call ahead and allow 24 hours to set up interviews with players. Arrangements will be made for telephone and in-person interviews at a time that is mutually agreeable to the reporter/broadcaster and the student-athlete. Any television crews wishing to tape an interview with Coach Hangstefer may do so daily before practice. Please call ahead to allow an office representative to help facilitate the interview.

PARKING

Parking for all members of the working media for Terrier home tennis matches can be found across the street from the Reeves Tennis Center.

POST MATCH INTERVIEWS

Post match interviews will take place at the Wofford locker room in the Reeves Tennis Center. Student-athletes are available outside the locker room following the conclusion of their matches.

NEWSPAPERS

SPARTANBURG HERALD-JOURNAL

sports@shj.com
Bob Dalton, Sports Editor
bob.dalton@shj.com
864-562-7293
Todd Shanesy, College Beat
todd.shanesy@shj.com
864-562-7273
P.O. Box 1657
Spartanburg, S.C. 29304
Fax: 864-594-6234

GREENVILLE NEWS

sports@greenvillenews.com
Bart Wright, Sports Editor
rbwright@greenvillenews.com
Jim Rice
jrice@greenvillenews.com
Box 1688
Greenville, S.C. 29602
864-298-4135
Fax: 864-298-4137

THE STATE

statesports@thestate.com
Rick Millans, Sports Editor
rmillans@thestate.com
Neil White, State colleges
nwhite@thestate.com
803-771-8643
Box 1333
Columbia, S.C. 29202
803-771-8470
Fax: 803-771-8613

TELEVISION

WYFF-TV 4 (NBC)

Brad Fralick, Sports Director
bfralick@hearst.com
Mike Giordano, Weekend Anchor
mgjordano@hearst.com
Marc Dopher, Reporter
mdopher@wyff4.com
Box 788
Greenville, S.C. 29602
864-240-5265 – Fralick
864-240-5264 – Giordano
Fax: 864-240-5305

WSPA-TV 7 (CBS)

Pete Yanity, Sports Director
pyanity@wspa.com
864-587-5452
Todd Summers, Weekend Anchor
tsummers@wspa.com
Box 1717
Spartanburg, S.C. 29304
864-576-7777
Sports: 864-587-5452
Fax: 864-587-5430

WHNS-TV 21 (FOX)

foxcarolinanews@foxcarolina.com
864-213-2222
21 Interstate Court
Greenville, S.C. 29615
864-213-2223
Fax: 864-987-1219

WLOS-TV 13 (ABC)

sports@wlos.com
Stan Pamfilis, Sports Director
pamfilis@wlos.com
Adam Kohler, Reporter
akohler@wlos.com
110 Technology Drive
Asheville, N.C. 28803
828-651-4563/4567
Fax: 828-651-4618

WIRE

THE ASSOCIATED PRESS

apcolumbia@ap.org
Pete Iacobelli, Sports Editor
piacobelli@ap.org
1311 Marion Street
Columbia, S.C. 29201
803-799-5510
1-800-922-1565
Fax: 803-252-2913

ATHLETIC MEDIA RELATIONS

Assistant AD for Media Relations Brent Williamson

Office Phone: 864-597-4093

E-Mail: williamsondb@wofford.edu

FAX: 864-597-4129

Press Box: 864-597-4478

Assistant Director for Media Relations: Kevin Young

E-Mail: youngkm@wofford.edu

Office Phone: 864-597-4092

Media Relations Assistant (TENNIS CONTACT): Ryan Bridges

E-Mail: bridgesrs@wofford.edu

Office Phone: 864-597-4098

Mailing Address: 429 North Church Street, Spartanburg, S.C. 29303

Gibbs Stadium Press Box: 864-597-4487

Athletic website: www.woffordterriers.com

WOFFORDTERRIERS.COM

In the fall of 2009, Wofford College launched an updated website for athletics which can be found at www.woffordterriers.com. The site contains all the information any Terrier fan is looking for, including rosters, schedules, student-athlete bios, updated statistics and archives. Live stats for most sports are also provided. Another key feature is TerrierVision. With this pay-per-view video service, fans can watch a wide variety of events, including football, men's and women's basketball and baseball, live on any computer with a broadband connection.



DIRECTIONS TO CAMPUS

From the West/GSP Airport: Take I-85 north to exit 69 (Business 85 North). Exit at 5A, I-585 South/US 176. After 2.5 miles, turn right on McCravy, then left at the light on Wood Street, which turns into Cummings Street. Street leads to Gibbs Stadium and campus.

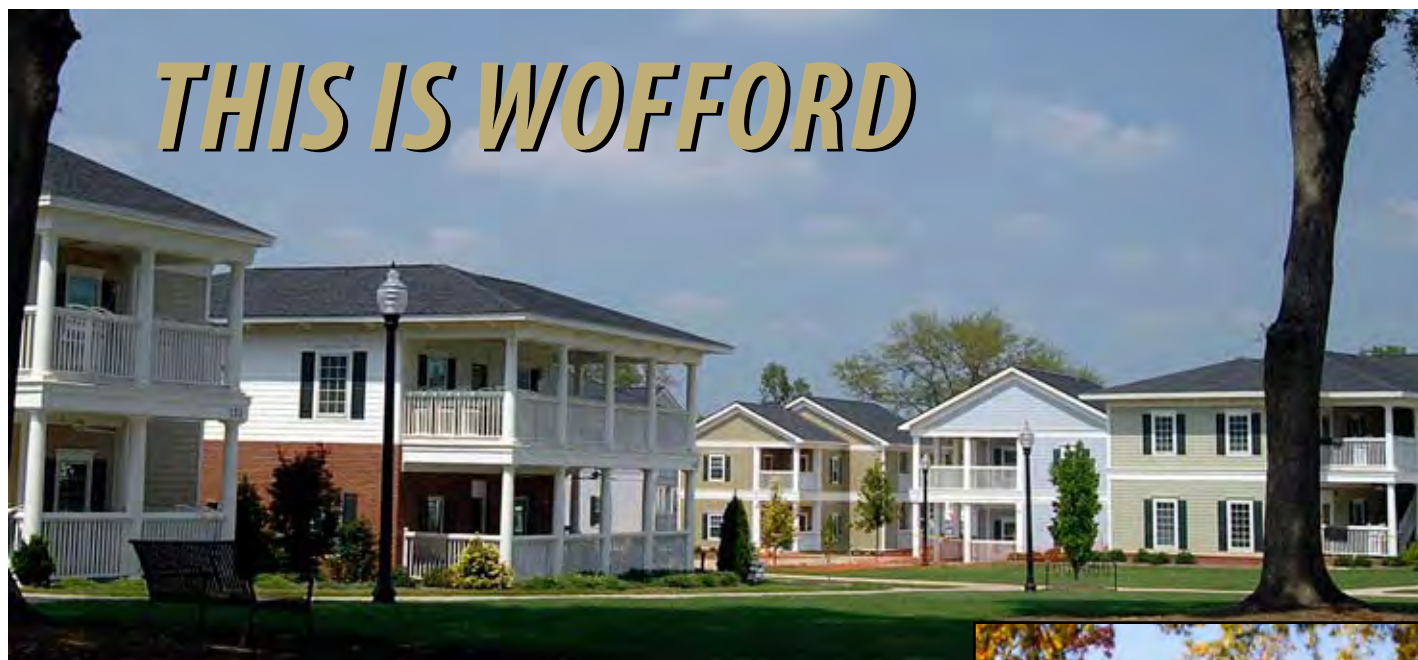
From the North: Take I-26 east to exit 15 (US 176). Follow for 7 miles. Turn right on McCravy, then left at the light on Wood Street, which turns into Cummings Street. Street leads to Gibbs Stadium and campus.

From the East/Charlotte Airport: Take I-85 south to exit 77 (Business 85 South). Exit at 5A, I-585 South/US 176. After 2.5 miles, turn right on McCravy, then left at the light on Wood Street, which turns into Cummings Street. Street leads to Gibbs Stadium and campus.

From the South: Take I-26 west to exit 21B (US 29 North). After 3.5 miles, turn left on St. John Street. Turn left at North Church Street. Turn right on Evins Street to reach the athletic facilities.



THIS IS WOFFORD



Wofford College, established in 1854, is an independent liberal arts college located in Spartanburg, S.C. It offers bachelor's degrees in 26 major fields of study, and is well known for its programs leading to graduate and professional studies. Affiliated with the United Methodist Church, the college is committed to quintessential undergraduate education within the context of values-based inquiry.

Wofford College consistently finds itself as a benchmark for what higher education should be now and in the future, and how students can find an exciting and fulfilling undergraduate experience that also is a good value both in financial investment and in value-added by that educational experience.

The college has scored high on the National Survey of Student Engagement (NSSE), which measures the level of academic challenge, active and collaborative learning, student-faculty interaction, enriching educational experiences, and a supportive campus environment.

Wofford can be found in numerous college guides that provide perspectives from a variety of sources. Among those are *U.S. News & World Report's* "America's Best Colleges," *The Princeton Review's* "Best 376 Colleges," *The Fiske Guide to Colleges*, *The (Yale) Insider's Guide*, and *Peterson's Colleges for Top Students*.

Forbes.com ranked Wofford as one of "America's Best Colleges" in 2011, the highest rated institution in South Carolina. In its November 2010 issue, *Kiplinger's Personal Finance* magazine ranked Wofford among the nation's best private college values, at number 31.

Wofford consistently lands on "best value" lists in various other national college guides and publications. In *U.S. News & World Report's* 2010 "America's Best Colleges," Wofford was included in "Great Schools, Great Prices," a listing of 31 liberal arts colleges.

Wofford ranks ninth in the country in the percentage of undergraduates receiving credit for studying abroad, according to *Open Doors 2010*, a report published by the Institute of International Education (IIE).

The Village, Wofford's apartment-style housing for its senior students, has earned a number of national recognitions. Phase V of The Village will open in the fall of 2011 with loft-style apartments along with a grand galleria, deli restaurant and market. It will be anchored by the Center for Professional Excellence.

Wofford was named to the President's Higher Education Community Service for 2010, presented by the Corporation for National and Community Service, an independent federal agency tasked with fostering an ethic of volunteerism and service in America. Wofford also was included in the 2009 Guide to Service-Learning Colleges & Universities, highlighting the college's programs to encourage student engagement.

Wofford's entire 175-acre campus is a national arboretum, which was named the Roger Milliken Arboretum at Wofford College in honor of the late longtime trustee and benefactor. More than 5,000 trees have been planted on the Wofford campus since 1992.



ACADEMICS



Wofford offers distinctive learning opportunities that set it apart from other liberal arts colleges. They provide students with meaningful study-abroad experiences, exciting and socially useful service opportunities, career-related and experiential learning possibilities, interaction with great academicians from across the world, and exposure to renowned authors, artists, and business and professional leaders. Such “focal point” programs include, but are not limited to:

The Interim, a January term that encourages students and faculty to explore new interests both on and off campus.

The Bonner Scholar Program, a service-learning scholarship program that places deserving students in volunteer positions throughout the community.

The Success Initiative, a leadership and scholarship program that offers practical, project-based experience.

The Vocational Discernment and Pre-Ministerial Program, a counseling and mentoring approach to helping students make personal decisions regarding further study and careers in the ministry.

Environmental Studies provides a creative and supportive learning environment that helps students pursue their goals in the rigorous and challenging program. It operates both on Wofford's campus and at the new Glendale Shoals Environmental Studies Center at Glendale, S.C. The property where the center is located borders 19 acres of protected green space along the Lawson's Fork Creek.

Neuroscience, a program in which students examine the nervous system and its regulation of behavior through an experimental approach, offered jointly by the Departments of Psychology and Biology.

Computational Science, a fast-growing interdisciplinary field that is at the intersection of the sciences, computer science and mathematics, involves learning to store, retrieve, process and visualize massive amounts of information in web-accessed databases.

Learning Communities, an interdisciplinary approach to learning that links courses in two or more departments through a common theme.

The Novel Experience, a first-year reading and writing program that offers an introduction to the academic rigors of Wofford while familiarizing students with the Spartanburg community.

The Creative Writing Concentration, a program led by outstanding published faculty writers that provides additional opportunities for students to hone their creative writing skills, earn coveted prizes and become published writers themselves.

Presidential International Scholar, an opportunity for an outstanding, intellectually gifted student to visit other parts of the world researching specific academic areas of interest.

The Community of Scholars. Student fellows in this summer program work under the supervision of faculty mentors engaged in parallel or related research. The projects encompass all disciplines, including science, the humanities, the social sciences and the fine arts.

Presidential Seminar, a weekly seminar hosted by Wofford President Benjamin Dunlap for outstanding seniors, in which seminar members explore interdisciplinary subjects of current significance.

Liberty Fellowship, a two-year leadership experience hosted by the college and a partnership of South Carolina businessman Hayne Hipp, of Greenville, the Aspen Institute and Wofford, for young citizens of South Carolina with exemplary promise for societal achievement.

ACADEMIC MAJORS

Accounting
 Art History
 Biology
 Business Economics
 Chemistry
 Chinese
 Computer Science
 Economics
 English
 Environmental Studies
 Finance
 French
 German
 Government
 History
 Humanities
 Intercultural Studies
 Intercultural Studies for Business
 Mathematics
 Philosophy
 Physics
 Psychology

Religion
 Sociology
 Spanish
 Theatre

ACADEMIC MINORS

Art History
 Business
 Chinese Studies
 Computer Science
 Economics
 English
 Environmental Studies
 German Studies
 Government
 History
 Mathematics
 Philosophy
 Religion
 Sociology

PRE-PROFESSIONAL PROGRAMS

Pre-Engineering
 Pre-Dental
 Pre-Law
 Pre-Medical
 Pre-Ministry
 Pre-Pharmacy
 Pre-Veterinary Science

OTHER PROGRAMS

African/African-American Studies
 Communications/Journalism
 Computational Science
 Creative Writing
 Gender Studies
 Geology
 Information Management
 Latin American & Caribbean Studies
 Medical Humanities
 Military Science
 Music
 Neuroscience
 19th Century Studies



PROMINENT ALUMNI

Wofford alumni live in all 50 states and more than 25 foreign countries. They include five Rhodes Scholars, five Truman Scholars and two Barry M. Goldwater Scholars.

Of 15,994 living alumni (graduates and non-graduates), 1,155 are presidents or owners of corporations or organizations, 1,213 are practicing medicine, dentistry or other health-care professions, and 732 are attorneys or judges.

MAJOR GENERAL RODNEY ANDERSON '79

Deputy Commanding General, XVIII Airborne Corps

DAVID BRESENHAM '93

Producer of *Keeping Up With the Kardashians*. Has also worked on *Real World/Road Rules Challenge* and *Big Brother*.

HAROLD CHANDLER '71

CEO, Univers Workplace Benefits

MICHAEL COPPS '63

Commissioner, Federal Communications Commission. Previously served as Assistant Secretary of Commerce for Trade Development.

FISHER DEBERRY '60

Former football coach at Air Force (1983-2006) and served as president of American Football Coaches Association.

CHAD FIVEASH '94

Writer and producer of television series such as *Kyle XY*, *Glory Daze*, *One Tree Hill* and *Switched at Birth*.

VAN HIPPI, JR. '82

President and CEO, American Defense Institute

CRAIG MELVIN '01

Reporter for MSNBC and NBC News Correspondent

DANNY MORRISON '75

President, Carolina Panthers. Previously served as Athletic Director at TCU and Wofford, as well as Commissioner of the Southern Conference.

WENDI NIX '96

On-air talent for ESPN, covering NFL, college football, baseball and PGA golf.

GREG O'DELL '92

CEO of Washington Convention Center Authority. As Chief Executive of the District of Columbia Sports and Entertainment Commission, oversaw construction of the Washington Nationals Ballpark.



COSTA M. PLEICONES '65

Associate Justice, Supreme Court of South Carolina

JERRY RICHARDSON '59

Jerry Richardson still holds Wofford's single-game record with 241 receiving yards vs. Newberry in 1956 and is the record holder for touchdown receptions in a season (9 in 1958) and in a career (21). Richardson was an Associated Press Little All-America selection in 1957 and '58. Drafted by the defending world champion Colts, Richardson played two seasons in the NFL, earning Colt Rookie of the Year honors in 1959 and finishing third in the balloting for top NFL rookie. As a senior at Wofford, he scored 72 points on nine touchdowns, 12 extra points and two field goals. He is the founder and owner of the Carolina Panthers.



JOE TAYLOR, JR. '80

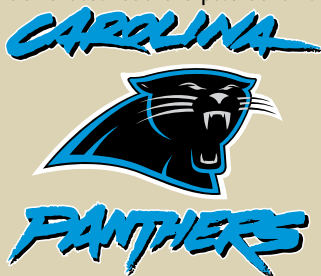
Former Secretary of Commerce, State of South Carolina

WALT WILKINS '96

Former United State Attorney, State of South Carolina. Currently Solicitor for Thirteenth Judicial Circuit

THE CAROLINA PANTHERS

The Carolina Panthers have held training camp at Wofford since their inaugural season in 1995. The camp provides Wofford tremendous national exposure and visibility. Media members that visit Wofford during the five-week camp include ESPN, Fox Sports Net, *USA Today* and *Sports Illustrated*. Local print and television media from markets including Columbia, Charlotte, Raleigh/Durham/Chapel Hill, Asheville and Greensboro/Winston-Salem are on campus on a daily basis.



According to SI.com's Tim Layden, "as I like to think of it: Training Camp Heaven. Wofford is 70 miles west of Charlotte on I-85, and presents all the reasons why there is something special about taking the team on the road for camp. Three pristine, Bermuda-grass fields with a stand of tall pines on two sides and a steep hillside -- where fans sit and watch -- on another. Fans, many of them young boys and girls, lined up along the fence, getting autographs after practice. It's a scene straight out of football's past."



THE RICHARDSON BUILDING



THE RICHARDSON BUILDING

The home of the Wofford College Athletic Department is the Richardson Physical Activities Building. The facility includes offices for the administration, football, basketball and other sports on the second floor. Also included on the second floor is an aerobic dance room and weight room with machine and free weights along with a variety of cardio machines. Locker rooms for football, men's and women's basketball, men's and women's soccer and a training room are located on the first floor.

Wofford alumnus and Carolina Panthers owner Jerry Richardson made a \$1 million donation in 2008 that was used for enhancing the Richardson Building. Numerous improvements were made in the facility to ensure that it is one of the most advanced athletic facilities in the nation.

Enhancements to the Richardson Building include new paint and carpet in the entire facility. The coaching and administration suites have been reconfigured to provide better reception areas. Football and men's basketball offices are outfitted with a new video system, including computers, editing software and large-screen monitors. This new system is similar to those being used by the NFL and NBA.

Inside the Harley Room, a new audio/video system was installed to handle the variety of events held in the room. New displays for academic honors, Southern Conference honors and the Hall of Fame are a part of the project. Additional murals and photos compliment the building and give it a fresh look.

In addition, the fitness facilities have been upgraded as well. Nearly \$100,000 worth of new equipment was added to supplement the current selection of treadmills and elliptical machines. The cardio area features six flat panel televisions for viewing while working out. The fitness area is used by the entire student body at Wofford.



Left: The fitness facility is available for all students and has numerous cardio machines in addition to free weights and weight machines. Top: The reception area for the football office suite. Above: The football locker room.



STRENGTH AND CONDITIONING



THE JOE E. TAYLOR CENTER

Wofford alumnus and South Carolina Secretary of Commerce Joe Taylor donated \$1 million for the renovation of the Curry Building into the Joe E. Taylor Athletic Center. The Taylor Center features a 7,000 square foot weight room and offices for athletic department staff. The building, located next to Gibbs Stadium, was completed in June of 2009.

The weight room facility is equipped with a total of 24 racks with built-in pull-up bars and nearly 25,000 pounds of plates, dumbbells and olympic weights. The 24 racks are divided, with twelve used with platforms and twelve used with benches. Additional equipment includes four pulldown machines, four low row machines, five power runners, six glute/ham machines, two decline ab machines, a leg press and exercise bike. Also included is a large area of Mondo track flooring, which is used with the step-up boxes, plyo boxes and hurdle sets in speed development.

The Taylor Center also provides offices for administration and numerous sports, including men's and women's soccer, baseball, men's and women's golf, volleyball, men's and women's tennis and cross country and track and field. A conference room and several work areas give the coaching staff much needed space.



MISSION STATEMENT

The Wofford College Strength and Conditioning Department embraces the mission of both the college and athletic department. The mission of our program is to foster a positive, safe, challenging, and training environment. Our approach allows coaches, athletic trainers, and athletes to work together towards developing an athlete's full physical and mental potential.

A focal point of our training programs will be to not spend too much time training one specific aspect of development, but to train with balance. We will be hitting all areas, not neglecting another to prevent injury. Our coaches will inspire the athletes to be consistent, disciplined, and to put forth a great effort every day; never allowing their feelings to affect their performance.

THE PHILOSOPHY

The Strength and Conditioning Program consists of a year-round training philosophy designed to improve all aspects of physical and mental development of each athlete. The training cycles consist of different phases, all of which follow sound fundamental training principle and periodization ranging from low to high intensity and high to low volume. These are all encompassing sport specific macrocycles, mesocycles, and microcycles, which will allow each athlete the best opportunity for reaching maximum genetic potential.

GOAL

The goal is to improve the strength, speed, agility, balance, and coordination of the athletes. We will further develop proprioception, kinesthetic awareness, eye-hand and eye-foot coordination. We will be focusing on injury prevention, flexibility, and overall power of the athletes trained under the direction of the strength and conditioning department. This will enable each athlete to have the skills and tools necessary to achieve success.



REEVES TENNIS CENTER



REEVES TENNIS CENTER

The John E. Reeves Tennis Center serves as the home of the men's and women's tennis programs at Wofford College. The facility was named after the late Mr. Reeves who was a valued friend to the Wofford community. A giant in the textile industry, Reeves was superintendent of the Reeves Brothers' Mill in Woodruff, S.C. He later assumed the duties of an officer and the director of the corporation. In 1967, he was named the company's Chairman and Chief Executive Officer.

Reeves was a member of the Wofford College Board of Trustees from 1974 through 1979. He served on the finance and co-educational study committees. Under his leadership, the Reeves Foundation was established to support many charitable causes, including The Campaign for Wofford: An Investment in People.

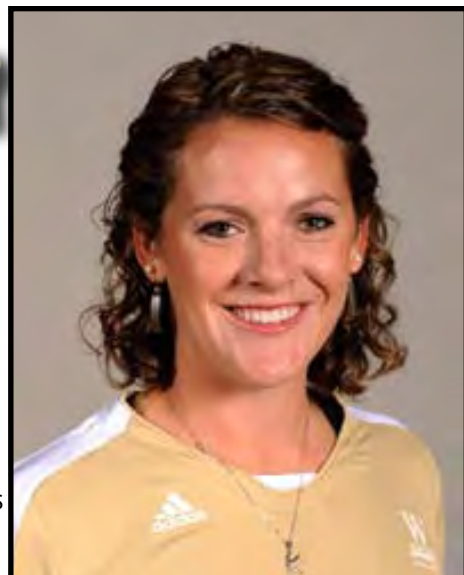
Mr. Reeves received many honors, including an honorary doctorate of law degree from Clemson University in 1963 and the doctorate of science degree from Wofford in 1984. He was named the New York Trade's Textile Man of the Year in 1970. The Reeves Tennis Center stands in honor of the contributions to Wofford and the surrounding communities Reeves made throughout his lifetime.

The facility has 11 championship quality courts. It contains men's and women's locker rooms, as well as a lounge that enters onto a large viewing deck overlooking the courts. Located adjacent to the middle of the Wofford campus on Evins Street, the Reeves Tennis Center opened in 1992.



COACH KATIE HANGSTEFER

Head Coach • 4th Season
Chattanooga '02



Katie Hangstefer is in her fourth season as Wofford's head women's tennis coach after joining the women's program in 2008. Hangstefer initially-joined the Terrier tennis staff in September 2007 as an assistant to head coach Rod Ray before her promotion in May 2008.

"Katie has come in and done a great job," said Wofford athletic director Richard Johnson. "She has past head

tabbed the league's February 2008 Athlete of the Month, while the Wofford starting lineup featured a pair of freshmen.

"Wofford has been a remarkable place to work and I'm so thankful to have this opportunity," said Coach Hangstefer after her first year of coaching.

Hangstefer came to Wofford after serving as the men's and women's head tennis coach at

Chattanooga for the AAC Sportsmanship Award. A freshman on the team also was recognized as an honorable mention all-conference performer. Three of Hangstefer's players collected Academic All-Conference honors.

Hangstefer also served as the director of facilities and operations at Covenant, a post she assumed in February 2007.

The Chattanooga, Tennessee native worked in her hometown as a tennis instructor teaching beginning and intermediate level classes from August 2002-April 2003.

Coach Hangstefer graduated in 2002 from fellow Southern Conference school Chattanooga, where she received a business management double major with concentrations in general management and human resource management. Hangstefer played tennis for the Mocs for four years. While in college, she was an instructor at the McCallie tennis clinics and camps.

HANGSTEFER COACHING TIMELINE

<u>Year</u>	<u>Organization</u>
2006-07	Covenant, head coach
2007-08	Wofford, asst. coach
2008- Present	Wofford, head coach



coaching experience and did a great job working with the team this past year. We are thrilled to offer her this opportunity and look forward to building a long-term relationship with her in the position."

Hangstefer primarily oversaw the women's program during her first year with Wofford in 2007-08. She guided the Terriers to an 11-2 start and eventually to an opening round bye in the Southern Conference Tournament.

Senior Adriane Hodges was

tabbed as the AAC Sportsmanship Award winner for the winter of 2006. In its first year as a varsity sport in 2007, she led the women's squad to a fifth-place Appalachian Athletic Conference (AAC) finish and berth in the AAC Tournament. The men's team was still a club sport under her direction.

The Lady Scots received the 2007 AAC Champions of Character team award, an honor for actions on and off the court. The No. 1 singles player garnered Appalachian Athletic Conference accolades as well as a nomina-



2012 WOMEN'S TENNIS ROSTER

<i>NAME</i>	<i>YR.</i>	<i>HT.</i>	<i>HOMETOWN / HIGH SCHOOL</i>
Audrey Coventry	Fr.	5-5	Overland Park, Kan. / Blue Valley
Victoria DaSilva	Fr.	5-7	East Greenwich, R.I. / Saddlebrook Prep
Sarah Evans	So.	5-2	Chattanooga, Tenn. / Girls Preparatory School
Guinn Garcia	Jr.	5-5	Knoxville, Tenn. / Webb School
Othilia Lindqvist	So.	5-8	Stockholm, Sweden / Danderyds Gymnasium
Julia Paulson	So.	5-3	Charlotte, N.C. / Charlotte Catholic
Emily Przystawski	Fr.	5-7	Prospect, Ky. / Assumption
Lucy Schermerhorn	Jr.	5-7	Colfax, N.C. / Southwest Guilford
Samantha Sullivan	So.	5-4	Beaufort, S.C. / Beaufort
Carter Tindall	Fr.	5-3	Asheville, N.C. / Carolina Day School





2011-12 TERRIERS

First Row: (left to right) Sarah Evans, Julia Paulson, Audrey Coventry, Emily Przystawski, Lucy Schermerhorn
Second Row: (left to right) Coach Katie Hangstefer, Victoria DaSilva, Samantha Sullivan, Guinn Garcia, Othilia Lindqvist

TERRIERS BY LOCATION

KANSAS

OVERLAND PARK..... AUDREY COVENTRY

KENTUCKY

PROSPECT EMILY PRZYSTAWSKI

NORTH CAROLINA

ASHEVILLE..... CARTER TINDALL

CHARLOTTE..... JULIA PAULSON

COLFAX LUCY SCHERMERHORN

RHODE ISLAND

EAST GREENWICH..... VICTORIA DASILVA

SOUTH CAROLINA

BEAUFORT..... SAMANTHA SULLIVAN

SWEDEN

STOCKHOLM..... OTHILIA LINDQVIST

TENNESSEE

CHATTANOOGA..... SARAH EVANS

KNOXVILLE GUINN GARCIA

TERRIERS BY CLASS

JUNIORS (2)

GUINN GARCIA

LUCY SCHERMERHORN

SOPHOMORES (4)

SARAH EVANS

OTHILIA LINDQVIST

JULIA PAULSON

SAMANTHA SULLIVAN

FRESHMEN(4)

AUDREY COVENTRY

VICTORIA DASILVA

EMILY PRZYSTAWSKI

CARTER TINDALL



SARAH EVANS

5-2 • Sophomore
Chattanooga, Tennessee
Girls Preparatory School



2010-11: Posted a team-best 16-8 overall record in singles action ... Her 16 victories are tied for the most wins in a single season in Wofford tennis history ... Went 6-4 in SoCon play ... Saw time at both the No. 3 and No. 4 positions ... Key wins came against Colorado State, Charlotte, Georgia Southern, Chattanooga, Elon, UNC Greensboro, and Davidson ... Compiled an overall record of 10-14 in doubles play with partners Julia Paulson and Emilia Milovanovic ... All matches took place at the No. 2 position ... Key wins came against duos from Colorado State, Air Force, Charlotte, Georgia Southern, Western Carolina, and Elon ... Named to the Southern Conference Academic Honor Roll.

HIGH SCHOOL: Played under Coach Sue Bartlett of the Girls Preparatory School for five years ... Led her team to four Tennessee state championship titles ... Distinguished as the 2010 individual champion her senior year ... Started at the No. 1 spot in 2010 and 2009, the No. 2 spot in 2008 and 2007, and the No. 3 spot in 2006 ... Recognized as having the most match wins in GPS tennis history ... Involved in the National Honor Society ... Participated in the dance company, Terpsichora, her sophomore year.

PERSONAL: Born September 29, 1991 in Chattanooga, Tennessee ... Daughter of Palmer and Karen Evans ... Has yet to declare a major.



GUINN GARCIA

*5-5 • Junior
Knoxville, Tennessee
Webb School*



2010-11: Finished the year with a 6-7 overall singles record ... Spent majority of season at No. 2 position ... Key wins came against North Carolina A&T, Colorado State, South Dakota, Presbyterian College, and South Carolina State ... Went 8-6 overall in doubles play with partner Haley Baird, with all matches taking place at the No. 1 position ... Notable wins came against duos from North Carolina A&T, Colorado State, South Dakota, Georgia Southern, Gardner-Webb and Memphis ... Named to the Southern Conference Academic Honor Roll.

2009-10: Finished second on the team with the most singles wins ... Started mainly at the No. 3 spot, but also started at the No. 1 and No. 2 positions throughout the season ... Had notable wins against Charlotte, Presbyterian College, Appalachian State, and Western Carolina ... Led the team in doubles wins, pairing up with Stephanie Cox and Haley Baird.

HIGH SCHOOL: Ranked a Four star recruit on www.tennisrecruiting.net ... Ranked 101 in the nation, 35 in the south, and number one in the state of Tennessee ... Compiled a 58-5 record in singles play to go along with a 37-4 record in doubles in high school ... Was a member of the all state team in 2006, 2007, and 2008 ... Named the All Knoxville Interscholastic League Prep Xtra Player of the year in 2006 and 2007 ... Won the Tennessee State qualifiers in four different age divisions including girls 12's, 14's, 16's and 18's ... Earned Multiple awards for sportsmanship ... Was a member of the National Art Honor Society.

PERSONAL: Born on February 15, 1991, in Knoxville, Tennessee ... Daughter of Joseph and Deborah Garcia ... Majoring in business finance.



JULIA PAULSON

5-3 • Sophomore
Charlotte, North Carolina
Charlotte Catholic



2010-11: Finished the year with an overall record of 14-10, with a 3-7 record in SoCon action ... Spent time at the No. 4 and No. 5 positions ... Key wins came against Colorado State, Air Force, South Dakota, Charlotte, Georgia Southern, Memphis, Western Carolina, UNC Greensboro, and Appalachian State ... Went 9-14 overall in doubles action ... Spent the majority of the season at the No. 2 position with partner Sarah Evans ... Key wins came against duos from Colorado State, Air Force, South Dakota, Presbyterian College, Charlotte, Georgia Southern, Western Carolina, and Elon ... Named to the Southern Conference Academic Honor Roll.

HIGH SCHOOL: Played under Coach Jo Cabana and Coach Ryan Harper for four years at Charlotte Catholic ... Led her team to four state championships, taking the title crown three times in 2007, 2008 and 2010 and finishing second in 2009 ... Started at the No.1 spot the last three years of her varsity career and started at the No. 2 spot her freshman year ... Awarded the Cougar Award, a distinguished academic honor at Charlotte Catholic.

PERSONAL: Born January 3, 1992 in Minneapolis, Minnesota ... Daughter of David and Sandra Paulson ... Has yet to declare a major.



LUCY SCHERMERHORN

5-7 • Junior
Colfax, North Carolina
Southwest Guilford



2010-11: Posted four singles wins on the season, seeing time at the No. 5 and No. 6 positions ... Wins came against North Carolina A&T, King College, Western Carolina, and Davidson ... Posted four wins in doubles action with partners Meagan Laframboise and Samantha Sullivan ... All matches took place at the No. 3 position ... Wins came over pairs from King College, Washington and Lee, and Appalachian State ... Named to the Southern Conference Academic Honor Roll.

2009-10: Split time starting at the No. 4, 5 and 6 positions ... Grabbed a strong win against East Tennessee State ... Started at the No. 2 and 3 spot in doubles, pairing up with Stephanie Cox and Sabrina Smyers.

HIGH SCHOOL: Four-year letterwinner for Southwest Guilford under head coach Denny Wesley ... Competed as the No.1 singles player ... named North Carolina 3A All-region ... Named All-Conference and All-Region for four years ... Holds school record among both girls and boys teams for most career wins with 91 ... Named Conference Player of the Year in 2008 ... Graduated with honors.

PERSONAL: Born on March 21, 1991 in High Point, North Carolina ... Daughter of William & Christine Schermerhorn ... Brother, Mason, played tennis at Elon University ... Sister, Sarah, played volleyball at Elon University ... Majoring in psychology and minoring in English.



SAMANTHA SULLIVAN

5-4 • Sophomore
Beaufort, South Carolina
Beaufort High School



2010-11: Participated in two singles matches, picking up a win over Eden Sherrod of King College (6-0, 6-1) ... Both matches took place at the No. 6 position ... Posted an 8-11 overall record in doubles action, partnering with Meagan Laframboise, Emilia Milovanovic, and Lucy Schermerhorn ... All action took place at the No. 3 position ... Key wins came over duos from North Carolina A&T, Presbyterian College, Georgia Southern, Coastal Carolina, and Appalachian State.



HIGH SCHOOL: Played under Coach David Reidmeyer for three years at Beaufort High School ... Crowned region champs each year of her varsity career, in 2008, 2009 and 2010 ... Started at the No. 1 spot junior and senior year, and the No.2 spot her sophomore year ... Never lost a region match throughout her varsity tenure, tallying a 52-0 record ... Voted team captain for the Eagles women's tennis program ... Recognized as the most valuable player by her teammates and given the Coach's Award ... Involved in the National Honor Society and Interact Club ... Avid writer and scuba diver.

PERSONAL: Born September 17, 1991 in Beaufort, South Carolina ... Daughter of Gary and Emmy Sullivan ... Anticipated major is education.



OTHILIA LINDQVIST

5-8 • Sophomore
Stockholm, Sweden
Danderyds Gymnasium

AT GEORGIA STATE: Posted a 5-4 record in singles play ... Earned key wins over Mercer, Brenau, and Florida State ... Won a total of four doubles matches with numerous partners throughout the season.

HIGH SCHOOL: Graduated from Danderyds Gymnasium in Stockholm, Sweden ... Earned a ranking of 1009 from the ITF ... Took part in several tournaments, including the ITF High Coast Junior World Ranking Tournament, taking two matches before falling in the quarterfinals.

PERSONAL: Born June 20, 1991 in Stockholm, Sweden ... Daughter of Anders and Charlotte Lindqvist ... Has yet to declare a major.



AUDREY COVENTRY

5-5 • Freshman
Overland Park, Kansas
Blue Valley High School

HIGH SCHOOL: Played under coach Nelson Elliott at Blue Valley High School ... Led the squad to the 5A state championship and first place regional finish in 2010 ... Was named to the All Sun Girls Tennis Team and All Metro Girls 1st Team Singles the same year ... Four star recruit and ranked #100 in the nation for the class of 2011 according to tennisrecruiting.net ... Reached #2 rankings in the UTSA Missouri Valley Girls 16's and 18's ... Honor roll student ally for years at Blue Valley ... Member of the National Honor Society and National French Honor Society.

PERSONAL: Born June 29, 1993 in Overland Park, Kansas ... Daughter of Geoffrey and Laurence Coventry ... Has yet to declare a major.





VICTORIA DASILVA

*5-7 • Freshman
East Greenwich, Rhode Island
Saddlebrook Prep School*

HIGH SCHOOL: Graduated from Saddlebrook Prep School in Tampa, Florida, where she was class valedictorian ... Member of the National Honor Society ... Has spent time volunteering as a math and English tutor, and with the American Cancer Society, as well at various soup kitchens.

PERSONAL: Born June 19, 1992 in Providence, Rhode Island ... Daughter of Manuel and Ann Marie DaSilvia ... Intends to major in math.



EMILY PRZYSTAWSKI

*5-7 • Freshman
Prospect, Kentucky
Assumption High School*

HIGH SCHOOL: Graduated from Assumption High School where she lettered all four years ... Led team to regional championships in 2009 and 2010 ... Team finished in second place at State Championships in 2010 ... Was an individual finalist in regionals in 2009 and 2010 ... Posted USTA ranking of third in Kentucky in 2010 and 53rd in the USTA Southern Region ... Member of the Peer Leaders, Big Sisters, and National Beta Club ... Spent time volunteering at St. Matthew's Elementary School and Louisville Metro Animal Services.

PERSONAL: Born February 6, 1993 in Louisville, Kentucky ... Daughter of Brian and Susan Przystawski ... Intends to major in pre-Med.



CARTER TINDALL

*5-3 • Freshman
Asheville, North Carolina
Carolina Day School*



HIGH SCHOOL: Lettered all four years at Carolina Day School in Asheville, North Carolina, where she won individual state championships in singles and doubles play her sophomore year ... Finished second in the state in singles and doubles play her senior year ... Team captain her senior year ... Named team MVP following her senior season ... Recipient of coaches award her junior year ... Also lettered in soccer all four years ... Named to the honor roll at Carolina Day all four years ... Member of the SADD Club, International Club, and Highlanders Society ... Put in over 100 hours of community service, volunteering with food drives.

PERSONAL: Born August 31, 1992 in Brevard, North Carolina ... Daughter of Frank and Elizabeth Tindall ... Grandfather, Lindsey Hopkins, played tennis at the University of Georgia ... Intends to major in psychology.

WOMEN'S TENNIS SUPPORT STAFF



PEG McDOWELL

ATHLETIC TRAINING



TYLER LAMPERT

STRENGTH & CONDITIONING



RYAN BRIDGES

ATHLETIC MEDIA RELATIONS



2011 SEASON RESULTS

Overall record: 10-15 • SoCon: 2-8 • Region: 0-0 • Home: 7-6 • Away: 1-7 • Neutral: 2-2
 • vs National ranked: 0-0 • vs Regional ranked: 0-0

Date	Opponent	Score	Overall	SoCon	Nation	Region
Jan 15, 2011	at Winthrop	L 2-5	0-1	0-0		
Jan 29, 2011	NORTH CAROLINA A&T	W 7-0	1-1	0-0		
Feb 09, 2011	KING COLLEGE	W 7-0	2-1	0-0		
Feb 12, 2011	vs Colorado State	W 5-2	3-1	0-0		
Feb 12, 2011	at Air Force	L 2-5	3-2	0-0		
Feb 13, 2011	vs South Dakota	W 7-0	4-2	0-0		
Feb 18, 2011	PRESBYTERIAN COLLEGE	W 6-1	5-2	0-0		
Feb 21, 2011	SOUTH CAROLINA STATE	L 3-4	5-3	0-0		
Feb 24, 2011	at UNC Charlotte	W 4-3	6-3	0-0		
* Feb 26, 2011	GEORGIA SOUTHERN	W 4-3	7-3	1-0		
Feb 27, 2011	COASTAL CAROLINA	L 1-6	7-4	1-0		
Mar 03, 2011	GARDNER-WEBB	W 4-3	8-4	1-0		
Mar 08, 2011	vs Memphis	L 1-6	8-5	1-0		
* Mar 17, 2011	WESTERN CAROLINA	W 7-0	9-5	2-0		
Mar 19, 2011	WASHINGTON AND LEE	W 5-2	10-5	2-0		
Mar 19, 2011	EMORY UNIVERSITY	L 3-4	10-6	2-0		
* Mar 22, 2011	at Furman	L 0-7	10-7	2-1		
* Mar 26, 2011	at Chattanooga	L 1-6	10-8	2-2		
* Mar 27, 2011	at Samford	L 0-7	10-9	2-3		
* Apr 02, 2011	ELON	L 2-5	10-10	2-4		
* Apr 03, 2011	UNCG	L 3-4	10-11	2-5		
* Apr 08, 2011	at Appalachian State University	L 1-6	10-12	2-6		
* Apr 12, 2011	at Davidson College	L 3-4	10-13	2-7		
* Apr 15, 2011	#71 COLLEGE OF CHARLESTON	L 0-7	10-14	2-8		
Apr 20, 2011	vs Appalachian State	L 3-4	10-15	2-8		

SINGLES	Overall	Dual	Tour	SoCon							vs ranked		Strk	Last 10
					1	2	3	4	5	6	Nat'l	Reg'l		
Haley Baird	11-14	11-14	0-0	3-7	---	3-10	8-4	---	---	---	0-0	0-0	L4	1-9
Stephanie Cox	3-9	3-9	0-0	0-1	---	---	---	1-0	---	2-9	0-0	0-0	L7	2-8
Sarah Evans	16-8	16-8	0-0	6-4	---	---	8-4	8-4	---	---	0-0	0-0	W1	6-4
Guinn Garcia	6-7	6-7	0-0	0-1	1-0	5-6	0-1	---	---	---	0-0	0-0	L5	4-6
Meagan Laframboise	3-7	3-7	0-0	2-6	---	---	---	---	---	3-7	0-0	0-0	L2	3-7
Emilia Milovanovic	11-14	11-14	0-0	1-9	10-14	1-0	---	---	---	---	0-0	0-0	L10	0-10
Julia Paulson	14-10	14-10	0-0	3-7	---	---	---	5-7	9-3	---	0-0	0-0	W1	3-7
Lucy Schermerhorn	4-10	4-10	0-0	2-7	---	---	---	---	3-10	1-0	0-0	0-0	L2	1-9
Samantha Sullivan	1-1	1-1	0-0	0-0	---	---	---	---	---	1-1	0-0	0-0	L1	1-1
Totals	70-80	70-80	0-0	18-42	11-14	9-16	16-9	14-11	12-13	8-17	0-0	0-0		
Percentage	.467	.467	.000	.300	.440	.360	.640	.560	.480	.320	.000	.000		

DOUBLES	Overall	Dual	Tour	SoCon							vs ranked		Strk	Last 10
					1	2	3	4	5	6	Nat'l	Reg'l		
Haley Baird/Guinn Garcia	8-6	8-6	0-0	1-1	8-6	---	---	---	---	---	0-0	0-0	L1	5-5
Sarah Evans/Julia Paulson	8-14	8-14	0-0	3-7	---	8-14	---	---	---	---	0-0	0-0	L4	1-9
Stephanie Cox/Emilia Milovanovic	0-3	0-3	0-0	0-0	---	---	0-3	---	---	---	0-0	0-0	L3	0-3
Sarah Evans/Emilia Milovanovic	2-0	2-0	0-0	0-0	---	2-0	---	---	---	---	0-0	0-0	W2	2-0
Meagan Laframboise/Samantha Sullivan	1-0	1-0	0-0	0-0	---	---	1-0	---	---	---	0-0	0-0	W1	1-0
Meagan Laframboise/Lucy Schermerhorn	1-0	1-0	0-0	0-0	---	---	1-0	---	---	---	0-0	0-0	W1	1-0
Stephanie Cox/Julia Paulson	1-0	1-0	0-0	0-0	---	---	1-0	---	---	---	0-0	0-0	W1	1-0
Emilia Milovanovic/Samantha Sullivan	4-3	4-3	0-0	1-0	---	---	4-3	---	---	---	0-0	0-0	L1	4-3
Haley Baird/Emilia Milovanovic	5-6	5-6	0-0	3-5	5-6	---	---	---	---	---	0-0	0-0	W1	4-6
Lucy Schermerhorn/Samantha Sullivan	3-8	3-8	0-0	1-7	---	---	3-8	---	---	---	0-0	0-0	W1	2-8
Totals	34-40	34-40	0-0	10-20	13-12	10-14	11-14	0-0	0-0					
Percentage	.459	.459	.000	.333	.520	.417	.440	.000	.000					



2011 MATCH-BY-MATCH

Date	Opponent	Score	Singles						Doubles		
			1	2	3	4	5	6	1	2	3
Jan 15, 2011	at Winthrop	L 2-5	W	L	L	W	L	L	L	L	L
Jan 29, 2011	NORTH CAROLINA A&T	W 7-0	W	W	W	W	W	W	W	W	W
Feb 09, 2011	KING COLLEGE	W 7-0	W	W	W	W	W	W	W	W	W
Feb 12, 2011	vs Colorado State	W 5-2	W	W	L	W	W	L	W	W	L
Feb 12, 2011	at Air Force	L 2-5	L	L	L	L	W	W	L	W	L
Feb 13, 2011	vs South Dakota	W 7-0	W	W	W	W	W	W	W	W	W
Feb 18, 2011	PRESBYTERIAN COLLEGE	W 6-1	W	W	W	W	W	L	W	W	W
Feb 21, 2011	SOUTH CAROLINA STATE	L 3-4	Wr	W	L	W	L	L	L	L	L
Feb 24, 2011	at UNC Charlotte	W 4-3	W	L	W	W	W	L	L	W	L
* Feb 26, 2011	GEORGIA SOUTHERN	W 4-3	L	L	W	W	W	L	W	W	W
Feb 27, 2011	COASTAL CAROLINA	L 1-6	L	L	W	L	L	L	L	L	W
Mar 03, 2011	GARDNER-WEBB	W 4-3	Wr	L	W	L	Wr	L	W	L	W
Mar 08, 2011	vs Memphis	L 1-6	L	L	L	L	W	L	W	L	L
* Mar 17, 2011	WESTERN CAROLINA	W 7-0	W	W	W	W	W	Ww	L	W	Ww
Mar 19, 2011	WASHINGTON AND LEE	W 5-2	W	W	W	W	L	L	W	L	W
Mar 19, 2011	EMORY UNIVERSITY	L 3-4	L	L	W	W	L	W	L	L	L
* Mar 22, 2011	at Furman	L 0-7	L	L	L	L	L	L	W	L	L
* Mar 26, 2011	at Chattanooga	L 1-6	L	L	W	L	L	L	W	L	L
* Mar 27, 2011	at Samford	L 0-7	L	L	L	L	L	L	L	L	L
* Apr 02, 2011	ELON	L 2-5	L	L	W	L	L	W	L	W	L
* Apr 03, 2011	UNCG	L 3-4	L	W	W	W	L	L	L	L	L
* Apr 08, 2011	at Appalachian State University	L 1-6	L	L	L	L	L	L	W	L	W
* Apr 12, 2011	at Davidson College	L 3-4	L	L	W	L	W	W	L	L	L
* Apr 15, 2011	#71 COLLEGE OF CHARLESTON	L 0-7	L	L	L	L	L	L	L	L	L
Apr 20, 2011	vs Appalachian State	L 3-4	L	L	W	W	L	L	W	u	W

NCAA COMPLIANCE

The importance of following all NCAA rules and regulations is imperative to maintaining the integrity of Wofford College and intercollegiate athletics. We ask all who are associated with the institutions athletics programs to help the College protect the spirit of competition, the athletics eligibility of our student-athletes and the reputation of the College by adhering to the rules and regulations of the NCAA and by contacting the Compliance Office or the NCAA with all questions. If you have any questions about NCAA rules, please contact Elizabeth Rabb at (864) 597-4090, the Wofford website at woffordterriers.com and click on 'Compliance,' or the NCAA at www.ncaa.org.



What is a Representative of Athletics Interests (Booster/Donor)?

All alumni, friends, and employees of the College are categorized as 'representatives of athletics interest.' The NCAA stipulates that once an individual has been identified as a 'representative' or "booster/donor" he/she retains this status forever even if the individual is no longer associated with the athletics program. Furthermore the NCAA states that it is possible for a person to be a representative of more than one institution at the same time. A representative of athletics interest may not:

- Contact a prospect's coach, principal or counselor in an effort to evaluate a prospect
- Visit the prospect's institution to pick up film or transcripts
- Contact a prospect, his/her parents, legal guardians or spouse on or off campus
- Contact a prospect by telephone or letter
- Make special arrangements to entertain a recruit
- Provide extra benefits to a prospect, student-athlete or the parents, family and/or guardians of the prospects or student-athletes

REMEMBER THE #1 RULE: 'ASK BEFORE YOU ACT!'



2011 SoCon RECAP

Overall record: 2-8 • SoCon: 2-8 • Region: 0-0 • Home: 2-3 • Away: 0-5 • Neutral: 0-0
 • vs National ranked: 0-0 • vs Regional ranked: 0-0

Date	Opponent	Score	Overall	SoCon	Nation	Region
* Feb 26, 2011	GEORGIA SOUTHERN	w 4-3	1-0	1-0		
* Mar 17, 2011	WESTERN CAROLINA	w 7-0	2-0	2-0		
* Mar 22, 2011	at Furman	L 0-7	2-1	2-1		
* Mar 26, 2011	at Chattanooga	L 1-6	2-2	2-2		
* Mar 27, 2011	at Samford	L 0-7	2-3	2-3		
* Apr 02, 2011	ELON	L 2-5	2-4	2-4		
* Apr 03, 2011	UNCG	L 3-4	2-5	2-5		
* Apr 08, 2011	at Appalachian State University	L 1-6	2-6	2-6		
* Apr 12, 2011	at Davidson College	L 3-4	2-7	2-7		
* Apr 15, 2011	#71 COLLEGE OF CHARLESTON	L 0-7	2-8	2-8		

Date	Opponent	Score	Singles						Doubles		
			1	2	3	4	5	6	1	2	3
* Feb 26, 2011	GEORGIA SOUTHERN	w 4-3	L	L	w	w	w	L	w	w	w
* Mar 17, 2011	WESTERN CAROLINA	w 7-0	w	w	w	w	w	w	w	w	w
* Mar 22, 2011	at Furman	L 0-7	L	L	L	L	L	L	w	L	L
* Mar 26, 2011	at Chattanooga	L 1-6	L	L	w	L	L	L	w	L	L
* Mar 27, 2011	at Samford	L 0-7	L	L	L	L	L	L	L	L	L
* Apr 02, 2011	ELON	L 2-5	L	L	w	L	L	w	L	w	L
* Apr 03, 2011	UNCG	L 3-4	L	w	w	w	L	L	L	L	L
* Apr 08, 2011	at Appalachian State University	L 1-6	L	L	L	L	L	L	w	L	w
* Apr 12, 2011	at Davidson College	L 3-4	L	L	w	L	w	w	L	L	L
* Apr 15, 2011	#71 COLLEGE OF CHARLESTON	L 0-7	L	L	L	L	L	L	L	L	L

OVERALL SoCon RESULTS

Team	Record	Pct	Home	Away	Record	Pct	Home	Away	Neutral
C of C	10-0	1.000	5-0	5-0	21-8	.724	12-3	6-4	3-1
UNCG	9-1	.900	5-0	4-1	15-7	.682	8-1	6-5	1-1
Furman	8-2	.800	4-1	4-1	13-11	.542	6-4	4-4	3-3
Samford	7-3	.700	4-1	3-2	18-5	.783	11-1	6-3	1-1
Chattanooga	6-4	.600	3-2	3-2	11-11	.500	7-4	4-6	0-1
Elon	5-5	.500	2-3	3-2	12-11	.522	6-5	4-5	2-1
Appalachian State	3-7	.300	2-4	1-3	11-11	.500	3-4	5-5	3-2
Georgia Southern	3-7	.300	0-5	3-2	10-11	.476	3-6	4-4	3-1
Wofford	2-8	.200	2-3	0-5	10-15	.400	7-6	1-7	2-2
Davidson	1-9	.100	1-4	0-5	5-20	.200	5-11	0-8	0-1
Western Carolina	1-9	.100	1-3	0-6	2-16	.111	1-4	1-10	0-2



A HISTORY OF WOFFORD COLLEGE TENNIS

Historical Notes: Tennis arose on the Wofford College campus in the fall of 1889. The club consisted of 16 members which included a President, Treasurer, Manager, 3 instructors, and a "keeper of the keys." The object of this club was to introduce and perpetuate tennis at Wofford. Quickly, the club became more of a school-wide organization consisting of members of the faculty as well as students. Wofford's first recorded tennis match, held on March 19, 1890, was a 3-1 win over Tryon. By 1920, Wofford Tennis became a team sport. There was no tennis team from 1942-43 to 1945-46 due to World War II.

Women's Tennis: In 1987, Head Coach Deno Trakas founded Wofford women's tennis as a club sport. In 1993 and 1995, the Wofford women's teams were ranked in the top 20 nationally.

WOMEN'S TENNIS YEAR-BY-YEAR RECORDS

<u>YEAR</u>	<u>COACH</u>	<u>RECORD</u>
1986-87	N/A	N/A
1987-88	Dr. Deno Trakas	4-8
1988-89	Dr. Deno Trakas	9-4
1989-90	Dr. Deno Trakas	10-8
1990-91	Dr. Deno Trakas	13-3
1991-92	Dr. Deno Trakas	9-4
1992-93	Dr. Deno Trakas	12-3
1993-94	Dr. Deno Trakas	15-3
1994-95	Dr. Deno Trakas	12-3
1995-96	Dr. Deno Trakas	10-6
1996-97	Dr. Deno Trakas	5-8
1997-98	Dr. Deno Trakas	8-9
1998-99	Dr. Deno Trakas	11-10
1999-00	Dr. Deno Trakas	4-13
2000-01	Rod Ray	10-10
2001-02	Rod Ray	11-10
2002-03	Rod Ray	11-8
2003-04	Rod Ray	11-8
2004-05	Rod Ray	8-13
2005-06	Rod Ray	13-11
2006-07	Rod Ray	6-13
2007-08	Rod Ray	12-8
2008-09	Katie Hangstefer	2-20
2009-10	Katie Hangstefer	1-21
2010-11	Katie Hangstefer	10-15

**1995-96 marked the first year of Division I play*



WOMEN'S TENNIS SEASON RECORDS

SINGLES VICTORIES

Sarah Evans	2010-11	16
Adriane Hodges	2005-06	16
Ellen Rogers	2005-06	16
Wendy Rohr	2003-04	15
Jennifer Eckert	1998-99	15
Julia Paulson	2010-11	14
Ellen Rogers	2003-04	14
Jennifer Simpson	1998-99	14
Molly Hughes	1989-90	13
CeCe Cubitt	1990-91	13
Sonia Anand	2007-08	12
Meredith Swittenberg	1990-91	12
Wendy Rohr	2002-03	12
Delaine Hare	2002-03	12
Casey Enfield	1999-00	12

DOUBLES VICTORIES

Tara Hartness	2005-06	14
Ellen Rogers	2005-06	14
Kristine Banks	2000-01	13
Ellen Rogers	2004-05	13
Ellen Rogers	2003-04	13
Wendy Rohr	2003-04	13
Haley Baird	2010-11	13
Yvonne Varn	1990-91	12
Erin Hantske	2000-01	12
Candy Gore	2000-01	12
Sarah Shelley	2004-05	12
Kari Wheeler	1991-92	11
Wendy Rohr	2000-01	11

1.000 WINNING PERCENTAGES

Singles

Mary Ann Vickers	1988-89
Teri Sloan	1989-90
Georgia Thackston	1989-90
Missy Forrester	1990-91
Leigh Anne Singleton	1990-91
Christy Gordon	1990-91
Leigh Anne Singleton	1991-92
Anne Coursey	1991-92

Doubles

Missy Forrester	1990-91
Leigh Anne Singleton	1990-91
Christy Gordon	1990-91
Georgia Thackston	1991-92
Meagan Laframboise	2010-11



SONIA ANAND



TARA HARTNESS



ALL-SOUTHERN CONFERENCE



HONORS AND AWARDS

CHARLES J. BRADSHAW AWARD

Louise Maynard
2006

SOUTHERN CONFERENCE PLAYERS OF THE WEEK

Wendy Rohr
March 5, 2002
April 15, 2003
April 20, 2004

Ellen Rogers
March 30, 2004
March 22, 2005

Sarah Shelley
February 22, 2005

SoCON STUDENT ATHLETE OF THE WEEK

Ellen Rogers
March 22, 2006

SOUTHERN CONFERENCE PLAYER OF THE MONTH

Adriane Hodges
February 2008



ADRIANE HODGES

WOFFORD COLLEGE HALL OF FAME

Louise Maynard - 2001
Wendy Rohr - 2009
Ellen Rogers - 2011



LOUISE MAYNARD



WENDY ROHR



ELLEN ROGERS



WOMEN'S TENNIS YEAR-BY-YEAR RESULTS

1987-88

Record: 4-8

Home: 2-4, Away: 2-4

Head Coach: Dr. Deno Trakas

Feb. 22	at Converse College	L, 2-7
Feb. 26	Erskine	L, 4-5
Mar. 2	at USC Spartanburg	L, 2-7
Mar. 7	Queens	L, 4-5
Mar. 16	Gardner Webb	W,9-0
Mar. 17	Converse College	L, 0-9
Mar. 21	at Presbyterian	L, 0-9
Mar. 23	USC Spartanburg	L, 2-7
N/A	at Erskine	W,5-4
April 7	at Lenoir Rhyne	L, 4-5
April 9	at Coker College	W,6-3
April 11	Columbia College	W,4-1

1988-89

Record: 9-4

Home: 3-1, Away: 5-2 Neutral: 1-1

Head Coach: Dr. Deno Trakas

Feb. 16	Presbyterian	L, 0-9
Feb. 28	Erskine	W,8-1
Mar. 2	at Converse College	L, 0-9
Mar. 4	at Belmont Abbey	W,9-0
Mar. 7	Queens	W,8-1
Mar. 9	at Erskine	W,8-1
Mar. 14	Gardner Webb	W,9-0
Mar. 18	at South Carolina State	W,8-1
Mar. 19	Emory & Henry	W,6-3
Mar. 20	Elon	L, 2-7
Mar. 28	at Converse College	L, 3-6
April 13	at Queens	W,8-1
April 17	at Gardner Webb	W,9-0

§ - neutral site (Hilton Head, SC)

1989-90

Record: 10-8

Home: Unknown, Away: Unknown

Head Coach: Deno Trakas

Feb. 15	at Presbyterian	N/A
Feb. 17	Baptist College of S.C.	N/A
Feb. 19	SMC	N/A
Feb. 22	Queens	N/A
Feb. 26	at Erskine	N/A
Feb. 27	Columbia College	N/A
Mar. 2	USC Spartanburg	N/A
Mar. 5	Winthrop	N/A
Mar. 8	Newberry	N/A
Mar. 12	at USC Spartanburg	N/A
Mar. 13	Converse College	N/A
Mar. 19	East Tennessee State	N/A
Mar. 22	Belmont Abbey	N/A
Mar. 24	UNC Asheville	N/A
Mar. 26	at Columbia	N/A
Mar. 29	at Newberry	N/A
April 2	at Converse College	N/A
April 3	Erskine	N/A

1990-91

Record: 13-3

Home: Unknown, Away: Unknown

Neutral: Unknown
Head Coach: Dr. Deno Trakas

Feb. 18	Presbyterian	N/A
Feb. 21	Spartanburg Methodist	N/A
Feb. 25	at Erskine	N/A
Feb. 28	at Converse	N/A
Mar. 4	UNC Asheville	N/A
Mar. 8	Jacksonville State	N/A
Mar. 9	at Belmont Abbey	N/A
Mar. 11	Erskine	N/A
Mar. 12	Converse	N/A
Mar. 22	at Baptist College of S.C.	N/A
Mar. 23	West Georgia	N/A
Mar. 24	Marshall	N/A
Mar. 25	Slippery Rock	N/A
Mar. 26	at Columbia College	N/A
April 2	at East Tennessee State	N/A
April 5	USC Spartanburg	N/A
April 9	Winthrop	N/A
April 13	Appalachian State	N/A
April 16	at Queens	N/A

§ - neutral site (Hilton Head, SC)

1991-92

Record: 9-4

Home: Unknown, Away: Unknown

Neutral: Unknown

Head Coach: Dr. Deno Trakas

Feb. 21	Queens	N/A
Feb. 27	at Erskine	N/A
Feb. 29	Lenoir-Rhyne	N/A
Mar. 3	USC Spartanburg	N/A
Mar. 5	Presbyterian	N/A
Mar. 13	at South Carolina State	N/A
Mar. 14	Carson Newman	N/A
Mar. 15	Virginia Intermont	N/A
Mar. 16	University of the South	N/A
Mar. 17	at Columbia College	N/A
Mar. 24	at Converse	N/A
Mar. 26	at Mars Hill	N/A
April 2	at Winthrop	N/A
April 6	at Lander	N/A
April 9	SMC	N/A
April 12	at UNC Asheville	N/A

§ - neutral site (Hilton Head, SC)

1992-93

Record: 12-3

Home: Unknown, Away: Unknown

Head Coach: Dr. Deno Trakas

Feb. 16	Presbyterian	N/A
Feb. 19	Georgia College	N/A
Feb. 23	at Belmont Abbey	N/A
Feb. 26	Lincoln Memorial	N/A
Mar. 1	at USC Spartanburg	N/A
Mar. 4	Appalachian State	N/A
Mar. 6	at Augusta College	N/A
Mar. 8	Erskine	N/A
Mar. 15	Western Carolina	N/A
Mar. 18	at Queens	N/A
Mar. 30	Winthrop	N/A
April 1	Converse	N/A
April 3	at Wingate	N/A

April 6	UNC Asheville	N/A
April 10	Lander	N/A

1993-94

Record: 8-3 (Incomplete)

Home: N/A, Away: N/A

Head Coach: Dr. Deno Trakas

1994-95

Record: 12-3

Home: 9-3, Away: 5-2

Head Coach: Dr. Deno Trakas

Feb. 19	USC Aiken	W, 7-0
Feb. 20	at Gardner Webb	W, 7-0
Feb. 21	Erskine	W, 5-2
Feb. 23	at USC Spartanburg	L, 3-4
Mar. 2	Queens	L, 3-4
Mar. 11	ETSU	L, 1-6
Mar. 12	UT Chattanooga	L, 3-4
Mar. 14	Furman	W, 5-2
Mar. 16	at Presbyterian	W, 7-0
Mar. 19	USC Spartanburg	W, 5-2
Mar. 21	Winthrop	W, 5-2
Mar. 23	at Erskine	L, 3-4
Mar. 24	Francis Marion	W, 4-3
Mar. 25	South Carolina State	W, 7-0
Mar. 27	at Davidson	W, 4-3



THE 1994 WOMEN'S TENNIS TEAM RECORDED A 12-3 MARK.

1995-1996

Record: 10-6

Home: 6-0, Away: 4-6

Head Coach: Dr. Deno Trakas

Sept. 26	at UNC Charlotte	W, 5-2
Oct. 28	at UNC Asheville	W, 6-1
Feb. 12	at Furman	L, 0-7
Feb. 16	at East Tennessee State	L, 1-6
Feb. 17	at Appalachian State	W, 6-1
Feb. 24	Coastal Carolina	W, 4-3
Feb. 27	UNC Charlotte	W, 4-3
Feb. 29	Presbyterian	W, 4-3
Mar. 14	at Davidson	L, 2-5
Mar. 16	at Winthrop	L, 3-4
Mar. 22	at South Carolina State	W, 7-0
Mar. 23	at College of Charleston	L, 0-7
Mar. 25	at Charleston Southern	L, 2-5
April 3	Queens	W, 6-0
April 4	UNC Asheville	W, 7-0
April 9	Western Carolina	W, 5-1
Mar. 24	Winthrop	L, 3-4
Mar. 27	Davidson	L, 2-5
April 8	UNC Asheville	W, 7-0
April 10	East Tennessee State	L, 3-4



1996-97

Record: 5-8
Home: 2-6, Away: 3-2
Head Coach: Dr. Deno Trakas

Oct. 12	at UNC Asheville	W, 6-0
Oct. 13	at Western Carolina	W, 7-1
Mar. 2	at Coastal Carolina	L, 3-4
Mar. 4	at UNC Greensboro	L, 1-6
Mar. 7	Charleston Southern	W, 5-1
Mar. 8	College of Charleston	L, 0-7
Mar. 12	Furman	L, 0-7
Mar. 15	UT Chattanooga	L, 0-7
Mar. 21	at Queens	W, 7-0
Mar. 24	Winthrop	L, 3-4
Mar. 27	Davidson	L, 2-5
April 8	UNC Asheville	W, 7-0
April 10	East Tennessee State	L, 3-4

1997-98

Record: 8-9, SoCon Record: 2-6
Home: 6-3, Away: 2-7, Neutral: 0-1
Head Coach: Dr. Deno Trakas

Oct. 15	UNC Charlotte	W, 5-4
Feb. 17	High Point	W, 7-2
Feb. 20	at Charleston Southern	L, 4-5
Feb. 21	at College of Charleston	L, 1-8
Feb. 24	Oakland (MI)	W, 8-1
Mar. 1	at Chattanooga*	L, 0-9
Mar. 3	UNC Asheville	W, 9-0
Mar. 9	Furman*	L, 0-9
Mar. 11	at Davidson*	L, 0-9
Mar. 13	Western Carolina*	W, 8-0
Mar. 19	at Winthrop	W, 5-4
Mar. 29	South Carolina State	W, 9-0
Mar. 31	at East Tennessee State*	L, 0-9
April 3	UNC Greensboro*	L, 0-9
April 11	Georgia Southern*	L, 2-7
April 15	at Appalachian State*	W, 5-1
April 17	vs. Furman*^	L, 1-5

note: First year in Southern Conference
* - Southern Conference match
^ - Southern Conference Tournament

1998-99

Record: 11-10, SoCon Record: 2-7
Home: 4-6, Away: 6-3, Neutral: 1-1
Head Coach: Dr. Deno Trakas

Feb. 19	at Mercer	W, 9-0
Feb. 20	at Georgia Southern*	L, 3-6
Feb. 23	Elon	L, 1-5
Mar. 2	at UNC Charlotte	W, 5-4
Mar. 7	Coastal Carolina	W, 7-2
Mar. 10	Davidson*	L, 2-7
Mar. 11	USC Aiken	W, 6-0
Mar. 16	at Western Carolina*	W, 7-1
Mar. 19	Chattanooga*	L, 0-9
Mar. 20	at South Carolina State	W, 9-0
Mar. 22	Appalachian State*	W, 7-2
Mar. 23	East Tennessee State*	L, 2-7
Mar. 25	at Furman*	L, 0-5
April 6	Winthrop	L, 1-8
April 9	at High Point	W, 5-1
April 10	at UNC Greensboro*	L, 1-8
April 11	College of Charleston*	L, 0-6
April 12	Charleston Southern	W, 5-1
April 15	vs. Appalachian State*^	W, 6-3
April 16	vs. UNC Greensboro*^	L, 0-5
April 19	at UNC Asheville	W, 5-2

* - Southern Conference match
^ - Southern Conference Tournament

1999-2000

Record: 4-13, SoCon Record: 1-8
Home: 3-4, Away: 1-8, Neutral: 0-1
Head Coach: Dr. Deno Trakas

Oct. 16	UNC Asheville	W, 6-2
Feb. 23	S.C. State	W, 8-1
Feb. 25	at Charleston Southern	L, 2-7
Feb. 26	at College of Charleston*	L, 0-7
Feb. 28	Western Carolina*	W, 7-2
Mar. 7	Furman*	L, 0-9
Mar. 10	Georgia Southern*	L, 0-9
Mar. 12	at Chattanooga*	L, 0-9
Mar. 14	UNC Charlotte	L, 2-7
Mar. 18	at Elon	W, 8-1
Mar. 23	at Winthrop	L, 0-9
Mar. 29	at UNC Asheville	L, 2-5
April 12	at Appalachian State*	L, 0-6
April 15	UNC Greensboro*	L, 0-6
April 18	at Davidson*	L, 1-8
April 22	at East Tennessee State*	L, 0-5
April 27	vs. Davidson*^	L, 0-5

* - Southern Conference match
^ - Southern Conference Tournament

2000-01

Record: 10-10, SoCon Record: 2-7
Home: 4-5, Away: 5-4, Neutral: 1-1
Head Coach: Rod Ray

Feb. 9	North Carolina State	L, 0-7
Feb. 17	at Francis Marion	W, 8-1
Feb. 18	at Coastal Carolina	L, 1-6
Feb. 20	Winthrop	W, 6-1
Feb. 24	at Georgia Southern*	L, 2-5
Feb. 27	Appalachian State*	W, 4-3
Mar. 5	Charleston Southern	W, 6-1
Mar. 10	East Tennessee State*	L, 3-4
Mar. 14	Liberty	W, 7-0
Mar. 15	Chattanooga*	L, 2-4
Mar. 17	College of Charleston*	L, 1-6
Mar. 18	at UNC Greensboro*	L, 3-4
Mar. 19	at UNC Asheville	W, 5-1
Mar. 23	at Charlotte	W, 4-3
Mar. 24	at High Point	W, 4-2
April 7	at Western Carolina*	W, 7-0
April 9	Davidson*	L, 2-5
April 11	at Furman*	L, 0-7
April 19	vs. Georgia Southern*^	W, 4-2
April 20	vs. Furman*^	L, 0-4

* - Southern Conference match
^ - Southern Conference Tournament

2001-02

Record: 11-10, SoCon Record: 3-3
Home: , Away: Neutral:
Head Coach: Rod Ray

Schedule Incomplete		
Mar. 9	Georgia Southern*	W, 7-0
Mar. 10	at East Tennessee State*	W, 7-0
Mar. 17	at Chattanooga*	L, 2-5
Mar. 22	Furman*	L, 0-7
Mar. 24	at Davidson*	W, 4-3
April 18	vs. Davidson*^	L, 1-4

* - Southern Conference match
^ - Southern Conference Tournament

2002-03

Record: 11-8, SoCon Record: 5-4
Home: 4-6, Away: 8-2, Neutral: 0-1
Head Coach: Rod Ray

Feb. 1	at Florida Southern	W, 7-0
Feb. 2	at Rollins	L, 2-5
Feb. 13	at Charlotte	W, 4-3
Feb. 16	at Emory	L, 0-7
Feb. 23	at Coastal Carolina	W, 4-3
Mar. 5	Winthrop	L, 2-5
Mar. 8	at Georgia Southern*	W, 5-2
Mar. 11	Chattanooga*	L, 3-4
Mar. 14	Mercer	W, 6-0
Mar. 15	UNC Greensboro*	W, 5-2
Mar. 26	Western Carolina*	W, 6-1
April 1	at Charleston Southern	W, 5-2
April 2	at College of Charleston*	L, 0-7
April 6	Furman*	L, 0-7
April 11	Davidson*	L, 2-5
April 12	Gardner Webb	W, 7-0
April 13	at East Tennessee State	W, 4-3
April 14	at Appalachian State*	W, 7-0
April 17	vs. Davidson*^	L, 3-4

* - Southern Conference match
^ - Southern Conference Tournament

2003-04

Record: 11-8, SoCon Record: 6-4
Home: 7-2, Away: 4-5, Neutral: 0-1
Head Coach: Rod Ray

Jan. 24	at Stetson	W, 5-2
Jan. 25	at Jacksonville	L, 3-4
Jan. 31	Georgia State	W, 4-3
Feb. 7	Coastal Carolina	W, 4-3
Feb. 18	at Gardner Webb	W, 7-0
Feb. 20	High Point	W, 6-1
Feb. 29	at Emory	L, 1-6
Mar. 14	at Chattanooga*	L, 2-5
Mar. 21	at UNC Greensboro*	W, 4-3
Mar. 23	East Tennessee State*	W, 5-2
Mar. 24	Appalachian State*	W, 4-3
Mar. 26	College of Charleston*	L, 3-4
Mar. 27	at Western Carolina*	W, 6-1
Mar. 28	at Furman*	L, 3-4
April 3	Georgia Southern*	W, 5-2
April 4	Charlotte	L, 1-6
April 15	at Davidson*	L, 1-6
April 17	Elon*	W, 5-2
April 23	vs. Chattanooga*^	L, 0-4

* - Southern Conference match
^ - Southern Conference Tournament

2004-2005

Record: 8-13, SoCon Record: 3-7
Home: 3-4, Away: 4-8, Neutral: 1-1
Head Coach: Rod Ray

Jan. 22	at Stetson	L, 1-4
Jan. 23	at Jacksonville	L, 1-4
Jan. 28	at Georgia State	L, 1-4
Feb. 4	at Radford	W, 6-1
Feb. 5	at Virginia Tech	L, 1-6
Feb. 18	at High Point	W, 5-2
Feb. 19	at Elon*	W, 7-0
Feb. 22	Gardner Webb	W, 6-1
Feb. 25	Chattanooga*	W, 5-2
Mar. 9	Winthrop	L, 2-5
Mar. 18	at Western Carolina*	W, 7-0
Mar. 20	at Appalachian State*	L, 2-5
Mar. 24	Furman*	L, 1-6
Mar. 30	at College of Charleston*	L, 1-6
April 9	Emory	W, 5-2
April 10	UNC Greensboro*	L, 3-4



2012 WOFFORD WOMEN'S TENNIS

April 14	at Georgia Southern*	L, 3-4
April 16	at East Tennessee State*	L, 0-7
April 17	No. 61 Davidson*	L, 0-7
April 21	vs. Appalachian State*^	W, 4-0
April 22	vs. No. 61 Davidson*^	W, 0-4

* - Southern Conference match
^ - Southern Conference Tournament-Charleston, SC

2005-06

Record: 13-11, SoCon Record: 6-3
Home: 7-4, Away: 5-6, Neutral: 1-1
Head Coach: Rod Ray

Jan. 21	at Stetson	L, 3-4
Jan. 22	at Embry-Riddle	W, 6-1
Feb. 4	East Carolina	L, 0-3
Feb. 4	Georgia State	L, 2-3
Feb. 8	at Gardner Webb	W, 7-0
Feb. 12	Mercer	W, 7-0
Feb. 17	High Point	W, 7-0
Feb. 25	at UNC Greensboro*	W, 5-2
Mar. 4	vs. Radford#	W, 6-1
Mar. 5	at Virginia Tech	L, 1-6
Mar. 8	at Winthrop	L, 1-6
Mar. 12	Northern Colorado	W, 6-1
Mar. 16	Charlotte	L, 1-6
Mar. 18	at Chattanooga*	W, 6-1
Mar. 23	at Furman*	L, 0-7
Mar. 25	Appalachian State*	W, 4-3
Mar. 26	Georgia Southern*	W, 4-3
Mar. 29	at Western Carolina*	W, 7-0
April 1	Campbell	W, 4-3
April 5	at Cal State - Northridge	L, 2-5
April 8	College of Charleston*	L, 3-4
April 11	at Davidson*	L, 1-6
April 12	Elon*	W, 6-1
April 21	vs. Appalachian State*^	L, 3-4

- in Blacksburg, VA
* - Southern Conference match
^ - Southern Conference Tournament

2006-07

Record: 6-13, SoCon Record: 3-6
Home: 3-5, Away: 2-7, Neutral: 1-1
Head Coach: Rod Ray

Jan. 20	at Stetson	L, 2-5
Feb. 10	at Mercer	W, 5-2
Feb. 14	Gardner Webb	L, 4-3
Feb. 25	at Charlotte	L, 2-5
Mar. 2	at Elon*	L, 2-5
Mar. 3	at East Carolina	L, 2-5
Mar. 10	at Georgia Southern*	L, 3-4
Mar. 16	Liberty	W, 4-3
Mar. 17	UNC Greensboro*	W, 4-3
Mar. 21	Furman*	L, 0-7
Mar. 22	Western Carolina*	W, 4-3
Mar. 25	Chattanooga*	L, 3-4
Mar. 30	at Georgia State	L, 1-6
April 4	at College of Charleston*	L, 0-7
April 10	at Appalachian State*	W, 4-3
April 13	Coastal Carolina	L, 0-4
April 15	Davidson*	L, 0-6
April 19	vs. Western Carolina*^	W, 4-0
April 20	vs. College of Charleston*^	L, 0-4

* - Southern Conference match
^ - Southern Conference Tournament

2007-08

Record: 12-8, SoCon Record: 4-5
Home: 7-4, Away: 5-3, Neutral: 0-1

Head Coach: Rod Ray

Jan. 30	at Gardner Webb	W, 4-3
Feb. 2	North Carolina A&T	W, 7-0
Feb. 3	Mercer	W, 7-0
Feb. 7	USC Upstate	L, 2-5
Feb. 10	at Coastal Carolina	W, 4-3
Feb. 15	at High Point	W, 4-3
Feb. 17	Emory	W, 6-1
Feb. 28	UNC Asheville	W, 6-1
Mar. 2	Appalachian State*	W, 7-0
Mar. 10	Georgia Southern*	W, 5-2
Mar. 13	Charlotte	W, 4-3
Mar. 22	Elon*	L, 2-5
Mar. 29	at Western Carolina*	W, 4-2
Mar. 30	Georgia State	L, 1-6
Mar. 21	at Davidson*	W, 4-3
Mar. 30	College of Charleston*	W, 5-2
April 1	at Chattanooga*	L, 3-4
April 4	College of Charleston*	L, 2-5
April 8	at No. 66 Furman*	L, 1-6
April 11	at Davidson*	L, 1-6
April 13	at UNC Greensboro*	L, 1-6
April 18	vs. Davidson*^	L, 0-4

* - Southern Conference match
^ - Southern Conference Tournament

2008-09

Record: 2-20, SoCon Record: 1-9
Home: 2-8, Away: 0-11, Neutral: 0-1
Head Coach: Katie Hangstefer

Jan. 30	at Florida Atlantic	L, 0-7
Feb. 1	vs. No. 21 Barry!	L, 0-9
Feb. 13	Gardner-Webb	L, 2-5
Feb. 21	at East Carolina	L, 0-7
Mar. 7	at USC Upstate	L, 1-6
Mar. 8	Lipscomb	L, 2-5
Mar. 12	Presbyterian College	W, 5-2
Mar. 17	Western Carolina*	W, 7-0
Mar. 21	Chattanooga*	L, 2-5
Mar. 22	Samford*	L, 3-4
Mar. 25	at Davidson*	L, 1-6
Mar. 30	Georgia Southern*	L, 1-6
Mar. 31	at Appalachian State*	L, 3-4
April 3	College of Charleston*	L, 0-7
April 4	at UNC Greensboro*	L, 0-7
April 7	at Elon*	L, 1-6
April 8	at Charlotte	L, 1-6
April 10	at East Tennessee State	L, 0-7
April 15	at No. 66 Furman*	L, 0-7
April 18	Washington & Lee	L, 2-5
April 18	Emory	L, 0-7
April 23	vs. Samford*^	L, 2-4

! - at Miami Shores, Florida
* - Southern Conference match
^ - Southern Conference Tournament (Elon, NC)
^ - Division II Regional Tournament at Armstrong State

2009-10

Record: 1-21, SoCon Record: 0-10
Home: 1-11, Away: 0-9, Neutral: 0-1
Head Coach: Katie Hangstefer

Jan. 16	at Wake Forest	L, 0-7
Jan. 29	at South Carolina State	L, 0-7
Feb. 14	at Coastal Carolina	L, 1-6
Feb. 18	Charlotte	L, 2-5
Feb. 21	Troy	L, 0-7
Feb. 22	at Presbyterian	W, 4-3
Feb. 27	East Carolina	L, 2-5

Mar. 1	East Tennessee State	L, 1-6
Mar. 4	at Gardner-Webb	L, 2-5
Mar. 6	vs Air Force ^	L, 0-7
Mar. 7	vs UAB ^	L, 1-6
Mar. 13	at Georgia Southern*	L, 0-7
Mar. 20	Appalachian State*	L, 2-5
Mar. 24	Furman*	L, 0-7
Mar. 27	at Chattanooga*	L, 1-6
Mar. 28	at Samford*	L, 0-7
Mar. 31	at College of Charleston*	L, 0-7
April 1	at Charleston Southern	L, 0-7
April 3	at Western Carolina*	L, 3-4
April 10	UNC Greensboro*	L, 0-7
April 11	Elon*	L, 1-6
April 14	Davidson*	L, 1-6

* - Southern Conference match
^ - Played in Birmingham, Alabama

2010-11

Record: 10-15, SoCon Record: 2-8
Home: 7-6, Away: 1-7, Neutral: 2-2
Head Coach: Katie Hangstefer

Jan. 15	at Winthrop	L, 2-5
Jan. 29	North Carolina A&T	W, 7-0
Feb. 9	King College	W, 7-0
Feb. 12	vs. Colorado State!	W, 5-2
Feb. 12	at Air Force	L, 2-5
Feb. 13	vs. South Dakota!	W, 7-0
Feb. 18	Presbyterian College	W, 6-1
Feb. 21	South Carolina State	L, 3-4
Feb. 24	at Charlotte	W, 4-3
Feb. 26	Georgia Southern*	W, 4-3
Feb. 27	Coastal Carolina	L, 1-6
Mar. 3	Gardner-Webb	W, 4-3
Mar. 8	vs. Memphis &	L, 1-6
Mar. 17	Western Carolina*	W, 7-0
Mar. 19	Washington & Lee	W, 5-2
Mar. 19	Emory	L, 3-4
Mar. 22	at Furman*	L, 0-7
Mar. 26	at Chattanooga*	L, 1-6
Mar. 27	at Samford*	L, 0-7
April 2	Elon*	L, 2-5
April 3	UNC Greensboro*	L, 3-4
April 8	at Appalachian State*	L, 1-6
April 12	at Davidson*	L, 3-4
April 15	No. 71 College of Charleston*	L, 0-7
April 20	vs. Appalachian State*^	L, 3-4

! - at Colorado Springs, Colorado
& - at Charleston, South Carolina
* - Southern Conference match
^ - Southern Conference Tournament



ALL-TIME DIVISION I SERIES RECORDS

Opponent	Series Record	Home	Away	Neutral
Air Force	0-2	0-0	0-1	0-1
Appalachian State	11-7	5-1	4-4	2-2
Barry	0-1	0-0	0-0	0-1
Cal State-Northridge	0-1	0-0	0-1	0-0
Campbell	1-0	1-0	0-0	0-0
Charleston Southern	4-4	3-0	1-4	0-0
Charlotte	8-6	3-4	5-2	0-0
Chattanooga	2-15	1-6	1-8	0-1
Coastal Carolina	5-5	3-2	2-3	0-0
College of Charleston	1-16	1-7	0-8	0-1
Colorado State	1-0	0-0	0-0	1-0
Davidson	3-20	0-8	2-8	1-4
East Carolina	0-4	0-2	0-2	0-0
East Tennessee State	3-10	1-5	2-5	0-0
Elon	4-6	2-4	2-2	0-0
Embry-Riddle	1-0	0-0	1-0	0-0
Emory	2-4	2-2	0-2	0-0
Florida Atlantic	0-1	0-0	0-1	0-0
Florida Southern	1-0	0-0	1-0	0-0
Francis Marion	1-0	0-0	1-0	0-0
Furman	0-18	0-7	0-9	0-2
Gardner-Webb	6-3	3-2	3-1	0-0
Georgia Southern	7-8	5-3	1-5	1-0
Georgia State	1-4	1-2	0-2	0-0
High Point	7-0	3-0	4-0	0-0
Jacksonville	0-2	0-0	0-2	0-0
King College	1-0	1-0	0-0	0-0
Liberty	2-0	2-0	0-0	0-0
Lipscomb	0-1	0-1	0-0	0-0
Memphis	0-1	0-0	0-0	0-1
Mercer	5-0	3-0	2-0	0-0
North Carolina A&T	2-0	2-0	0-0	0-0
North Carolina State	0-1	0-1	0-0	0-0
Northern Colorado	1-0	1-0	0-0	0-0
Oakland	1-0	1-0	0-0	0-0
Presbyterian College	4-0	3-0	1-0	0-0
Queens	2-0	1-0	1-0	0-0
Radford	2-0	0-0	1-0	1-0
Rollins	0-1	0-0	0-1	0-0
Samford	0-4	0-1	0-2	0-1
South Carolina State	4-2	2-1	2-1	0-0
South Dakota	1-0	0-0	0-0	1-0
Stetson	1-3	0-0	1-3	0-0
Troy	0-1	0-1	0-0	0-0
UAB	0-1	0-0	0-0	0-1
UNC Asheville	10-1	7-0	3-1	0-0
UNC Greensboro	4-11	2-4	2-5	0-1
USC Aiken	1-0	1-0	0-0	0-0
USC Upstate	0-2	0-1	0-1	0-0
Virginia Tech	0-2	0-0	0-2	0-0
Wake Forest	0-1	0-0	0-1	0-0
Washington & Lee	1-1	1-1	0-0	0-0
Western Carolina	15-1	8-0	6-1	1-0
Winthrop	2-9	1-5	1-4	0-0

Note: 2001-02 results are incomplete

Note: Women's tennis entered Division I play in the 1995-96 season



WOFFORD ALL-TIME WOMEN'S TENNIS ROSTER

A

Susan Allen	1986-91
Sonia Anand	2007-10
Katherine Annas	1996-99

B

Haley Baird	2007-11
Kristine Banks	1998-02
Kristen Bownan	2003-04
Mary Madison Brittain	1999-00

C

McKenzie Carson	2006-08
Julie Clark	1993-97
Katie Coleman	2000-04
Sarah Copeland	1989-90
Anne Coursey	1991-92
Audrey Coventry	2011-
Stephanie Cox	2009-11
CeCe Cubitt	1990-93

D

Victoria DaSilva	2011-
Lisa Deavenport	1986-89
Mary Wallace DeBerry	2000-04
Bethany Dyar	2009-10

E

Jennifer Eckert	1998-00
Casey Enfield	1996-00
Sarah Evans	2010-

F

Missy Forrester	1989-92
-----------------	---------

G

Guinn Garcia	2009-
Christy Gordon	1989-91
Candy Gore	1999-03
Tricia Grose	1987-88

H

Erin Hantske	2000-02
Delaine Hare	2000-04
Abney Harper	1994-95
Julia Harris	1994-98
Summer Harrold	1999-00
Tara Hartness	2002-06
Mary Elston Heaner	2007-10
Merry Ellen Henry	2007-09
Adriane Hodges	2004-08
Molly Hughes	1989-91

J

Beth Jeter	1989-93
Leigh Johnson	1993-96

K

Evelyn King	2000-02
Cynthia Kolb	1986-87

L

Meagan Laframboise	2010-11
Lindsay Larkin	2009-11
Ashley Lawrence	2008-09
Othilia Lindqvist	2011-
Jamie Link	2000-01

M

Missy Manning	1990-94
Anna Martin	1997-02
Mary Beth Martin	1996-99
Louise Maynard	1992-96
Elizabeth McCue	1996-99
Heather Miller	1992-94
Emilia Milovanovic	2010-11
JoAnn Mitchell	1988-89

O

Christi Owen	1993-96
--------------	---------

P

Ashley Page	2005-07
Shannon Parker	1993-96
Julia Paulson	2010-
Lauren Prickett	2004-08
Emily Przystawski	2011-

Q

Taite Quinn	2003-04
-------------	---------

R

Heather Randolph	1993-95
Elizabeth Rast	1999-00
Lindsay Roberts	1996-99
Leah Robertson	1993-95
Ellen Rogers	2002-06
Wendy Rohr	2000-04

S

Cathrine Sarnqvist	2010-11
Lucy Schermerhorn	2009-
Gina Shaw	1995-96
Christine Shippey	1987-88
Lisa Siciliano	1994-98
Jennifer Simpson	1995-99
Leigh Anne Singleton	1990-92
Teri Sloan	1989-90
Sabrina Smyers	2006-10
Cecily Stallworth	1987-88
Lauren Stephens	2000-03
Samantha Sullivan	2010-
Meredith Swittenberg	1987-91

T

Georgia Thackston	1988-92
Melanie Thompson	1992-96
Carter Tindall	2011-
Meghan Turner	2002-03

V

Yvonne Varn	1988-91
Beth Varner	1986-89
Jennie Vessels	1986-88
Mary Ann Vickers	1987-89

W

Cayley Wetzig	2005-09
Kari Wheeler	1991-95
Lauren Marie Whisenhunt	2000-04
Laura Lynn Williams	2004-08

**Bold names represent current players*



HALEY BAIRD



THE HUB CITY



The City's origins predate the Revolutionary War. Spartanburg was named for a unit of American Revolution forces called the "Spartan Rifles" who helped defeat the British at the Battle of Cowpens in 1781, under the leadership of General Daniel Morgan.

The town of Spartanburg was incorporated in 1831 and later as a city in 1880 by the 13 Original States and Tennessee. During this time Spartanburg was booming due in large part to the rapidly expanding textile industry.

In the 1870s, Spartanburg became a railroad "hub city," with mainline railroads extending from Magnolia Street depot in all directions, taking passengers and freight to Charleston, Augusta, Atlanta, Asheville, Charlotte and points beyond. As many as 90 trains per day could be seen and heard operating in Spartanburg during the golden age of the American railroad, 1900-20.

During the 1920s, Spartanburg built South Carolina's first municipal airport and claimed the state's first commercial radio station (WSPA). Its leadership in the state was reflected by the election of several residents as governor.

Thousands of U.S. soldiers bound for overseas service in World Wars I and II trained at camps in Spartanburg. The post headquarters for Camp Wadsworth (1917-19) was located at the present site of WestGate Mall, and the Camp Croft (1940-45) was located south of the city. Much of that military reservation has become Croft

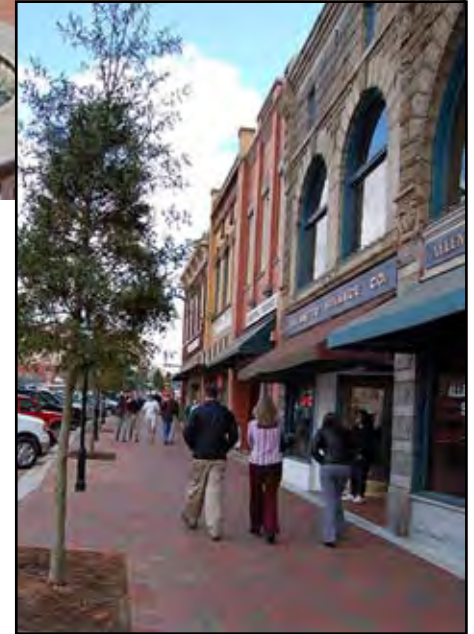


State Park.

After World War II, Spartanburg made a concerted effort to promote its location at the junction of Interstates 85 and 26 to international business. One of the greatest successes of this campaign was the development of the BMW manufacturing center near the Greenville-Spartanburg Airport.

Spartanburg's downtown, which always has been anchored by the campuses of Wofford and Converse Colleges, has been undergoing a major revival since the mid-1990s. In addition to the corporate headquarters for Denny's, Advance America, QS-1 and several other companies, the city has acquired a magnificent public library, the Marriott Hotel at Renaissance Park and most recently, the Chapman Arts Center and the USC Upstate George Dean Johnson School of Business. The area surrounding Morgan Square gradually is redeveloping with a variety of interesting restaurants and urban apartment-style housing.

Throughout the 20th century, textile manufacturing companies formed the backbone of the Spartanburg



economy. The most significant of these companies still in operation is internationally respected Milliken & Company.

Blessed by geography and climate as well as by energetic and well-educated citizenry, Spartanburg is emerging as one of the centers of a 21st century metroplex that extends along the South Carolina portion of the I-85 corridor.





THE SOUTHERN CONFERENCE

The Southern Conference, which began its 91st season of intercollegiate competition in 2011, is a national leader in emphasizing the development of the student-athlete and in helping to build lifelong leaders and role models.

The Southern Conference has been on the forefront of innovation and originality in developing creative solutions to address issues facing intercollegiate athletics. From establishing the first conference basketball tournament (1921), tackling the issue of freshmen eligibility (1922), developing women's championships (1984), to becoming the first conference to install the three-point goal in basketball (1980), the Southern Conference has been a pioneer.

The Southern Conference is the nation's fifth-oldest NCAA Division I collegiate athletic association. Only the Big Ten (1896), the Missouri Valley (1907), the Pacific 10 (1915) and the Southwestern Athletic (1920) conferences are older in terms of origination.

Academic excellence has been a major part of the Southern Conference's tradition. Hundreds of Southern Conference student-athletes have been recognized on Capital One Academic All-America and all-district teams. A total of 19 Rhodes Scholarship winners have been selected from conference institutions.

The Conference currently consists of 12 members in five

states throughout the Southeast and sponsors 19 varsity sports and championships that produce participants for NCAA Division I Championships.

The Southern Conference offices are located in the historic Beaumont Mill in Spartanburg, S.C. A textile mill that was in operation from 1880 until 1999, Beaumont Mill was renovated in 2004 and offers the league meeting areas and offices as well as a library for storage of historical documents.

MEMBERSHIP HISTORY

On Feb. 25, 1921, representatives from 14 of the Southern Intercollegiate Athletic Association's (SIAA) 30 members met at Atlanta's Piedmont Hotel to establish the Southern Intercollegiate Conference. On hand at the inaugural meeting were officials from Alabama, Alabama Polytechnic Institute (Auburn), Clemson, Georgia, Georgia School of Technology (Georgia Tech), Kentucky, Maryland, Mississippi A&M (Mississippi State), North Carolina, North Carolina State, Tennessee, Virginia, Virginia Polytechnic Institute (Virginia Tech) and Washington & Lee.

Dr. S.V. Sanford of Georgia was chosen as acting chairman and N.W. Dougherty of Tennessee was named secretary. The decision to form a new athletic conference was motivated by the desire to have a workable number of conference games for each



league member. With 30 schools in the SIAA by the early 1920s, it was impossible to play every school at least once during the regular season and many schools went several years between playing some conference members. In addition, in 1920, the SIAA voted down proposed rules that an athlete must be in a college a year before playing on its teams and refused to abolish a rule permitting athletes to play summer baseball for money.

Play began in the fall of 1921 and a year later, six more schools joined the fledgling league including Tulane (which had attended the inaugural meeting but had elected not to join), Florida, Louisiana (LSU), Mississippi, South Carolina and Vanderbilt. VMI joined in 1925 and Duke was added in 1929.

By the 1930s, membership in the Southern Conference had reached 23 schools. C.P. "Sally" Miles of Virginia Tech, president of the Southern Conference, called the annual league meeting to order on Dec. 9, 1932 at the Farragut Hotel in Knoxville, Tenn. Georgia's Dr. Sanford announced that 13 institutions west and south of the Appalachian Mountains were reorganizing as the Southeastern Conference. Members of the new league included Alabama, Alabama Polytechnic Institute, Florida, Georgia, Georgia School of Technology, Kentucky, Louisiana, Mississippi, Mississippi A&M, University of the South, Tennessee, Tulane and Vanderbilt.

According to the minutes of the meeting, Dr. Sanford stated that the division was made along geographical lines. Florida's Dr. J.J. Tigert, acting as spokesman for the withdrawing group, regretted the move but believed it was necessary as the Southern Conference had grown too large. The resignations were accepted and the withdrawing schools formed the new league which began play in 1932.



The Southern Conference office is located in the refurbished Beaumont Mill in Spartanburg, less than a mile from the Wofford campus.



SOUTHERN CONFERENCE MEMBERS

- Alabama (1921-1932)
- Appalachian State (1971-present)**
- Auburn (1921-1932)
- College of Charleston (1998-present)**
- Chattanooga (1976-present)**
- The Citadel (1936-present)**
- Clemson (1921-1953)
- Davidson (1936-1988, 1991-present)**
- Duke (1928-1953)
- East Carolina (1964-1976)
- East Tennessee State (1978-2005)
- Elon (2003-present)**
- Florida (1922-1932)
- Furman (1936-present)**
- George Washington (1936-1970)
- Georgia (1921-1932)
- Georgia Southern (1991-present)**
- Georgia Tech (1921-1932)
- Kentucky (1921-1932)
- Louisiana State (1922-1932)
- Marshall (1976-1997)
- Maryland (1921-1953)
- Mississippi (1922-1932)
- Mississippi State (1921-1932)
- North Carolina (1921-1953)
- North Carolina at Greensboro (1997-present)**
- North Carolina State (1921-1953)
- Richmond (1936-1976)
- Samford (2008-present)**
- South Carolina (1922-1953)
- Tennessee (1921-1932)
- Tulane (1922-1932)
- University of the South (1922-1932)
- Vanderbilt (1922-1932)
- Virginia (1921-1937)
- VMI (1924-2003)
- Virginia Tech (1921-1965)
- Wake Forest (1936-1953)
- Washington & Lee (1921-1958)
- West Virginia (1950-1968)
- Western Carolina (1976-present)**
- William & Mary (1936-1977)
- Wofford (1997-present)**

Bold indicates current conference member



The Southern Conference continued with membership of 10 institutions including Clemson, Duke, Maryland, North Carolina, North Carolina State, South Carolina, Virginia, VMI, Virginia Tech and Washington & Lee.

The second major shift occurred some 20 years later. By 1952, the Southern Conference included 17 colleges and universities. Another split occurred when seven schools including Clemson, Duke, Maryland, North Carolina, North Carolina State, South Carolina and Wake Forest departed to form the Atlantic Coast Conference which began play in 1953. The revamped Southern Conference included members The Citadel, Davidson, Furman, George Washington, Richmond, VMI, Virginia Tech, Washington & Lee, West Virginia and William & Mary.

Today, the league continues to thrive with a membership that includes 12 institutions and a footprint that spans five states: Tennessee, North Carolina, South Carolina, Alabama and Georgia. Current league members are Appalachian State, College of Charleston, The Citadel, Davidson, Elon, Furman, Georgia Southern, UNC Greensboro, Samford, Chattanooga, Western Carolina and Wofford.

CHAMPIONSHIP HISTORY

The first Southern Conference Championship was the league basketball tournament held in Atlanta in 1922. The Southern Conference Tournament remains the oldest of its kind in college basketball.

The Southern Conference declares champions in 10 men's sports - football, soccer, cross country, basketball, indoor track and field, outdoor track and field, wrestling, baseball, tennis and golf - and nine women's sports - soccer, volleyball, cross country, basketball, indoor track and field, outdoor track and field, tennis, golf and softball.

FOOTBALL

The Southern Conference has excelled as the premier Football Championship Subdivision (FCS) conference. Southern Conference member Appalachian State won three consecutive FCS titles from 2005-07, becoming the first team to do so. The league boasts more than 250 players who have garnered All-America recognition and numerous national player or coach of the year awards. The conference has had at least one team in the Top 10 of the final FCS poll for 25 consecutive years with

Wofford won the 2003, 2007 and 2010 SoCon Football Championships.



Wofford won the 2009 Men's Soccer Regular Season and Tournament Championships.



2012 WOFFORD WOMEN'S TENNIS



2011 WOFFORD ATHLETIC HALL OF FAME INDUCTEES

PRE-LETTERMAN'S CLUB

Claude S. Finney '29	Football
Ted M. Phelps '69	Football
David Lemmons '66	Track
Warren Whittaker '67	Football
Daniel Lewis '62	Football
William Barbee '60	Basketball
Jerry Richardson '59	Football
Charles Bradshaw '59	Football
Trapier Hart '60	Basketball
George Lyons '65	Basketball
William Ziegler '67	Golf
Donald Williams '67	Football
Harold Chandler '71	Football
Sterling Allen '73	Football
Stan Littlejohn '73	Golf

POST-LETTERMAN'S CLUB

1979 – Joel Robertson '41	BKB/FB/BB
1979 – C.B. Mooneyham '34	Basketball/Baseball
1979 – P.J. Boatwright '49	Golf
1979 – Elby Hammett '49	Football
1979 – Charlie Seay '48	Basketball
1979 – Phil Dickens	Coach
1980 – Gene Alexander	Coach
1980 – Warren Ariail '49	Trainer
1980 – Lou Bouknight '33	Football
1980 – Aubrey Faust '42	Football/Basketball
1980 – James Neal '53	Basketball
1980 – Bob Prevatte '50	Football
1981 – A.B. Bullington '33	Basketball
1981 – Sammy Sewell '50	Football
1981 – Vernon Quick '51	Football
1981 – Jimmy Hilton '42	Football
1981 – Skip Corn '73	Football/Track
1981 – Conley Snidow	Coach
1982 – William Child '25	Tennis
1982 – Lorine King '51	Football
1982 – Jack Beeler '52	Football
1982 – Bob Pollard '52	Football
1982 – Bill Moody '53	Basketball
1982 – Jim Brakefield	Coach
1983 – Earle Buice	Coach
1983 – Don Fowler '57	Basketball
1983 – Ricky Satterfield '76	Football
1984 – Wally Dean '50	Basketball
1984 – Joe Hazle '55	Football
1984 – Bill Scheerer	Special
1984 – Willie Varner '52	Football/Track
1985 – Jack Abell '54	Football/Basketball
1985 – Clifford Boyd '71	Football
1985 – Philip Clark '50	FB/BKB/BB
1985 – Robert Jordan '71	Football
1986 – Thomas Bower '74	Football
1986 – Fisher DeBerry '60	Coach
1986 – James Gordon '52	Football
1986 – Doug Lowe '75	Basketball
1986 – Harvey Moyer '50	Football
1987 – Coy Gibson '75	Football/Basketball
1987 – George Rice '57	Football
1988 – LeNoid Best '82	Football
1988 – Carter Davis, Jr. '75	Football
1988 – Alfred McGinnis '56	Football
1989 – William Carpenter '58	FB/Basketball

1989 – Frank Ellerbe '18	Baseball
1990 – Thomas McIntyre '56	Baseball
1991 – Sid Allred '70	Football
1991 – Meg Hunt '84	Women's Basketball
1991 – Jim Clary '49	Football
1991 – Bruce Johnson '70	Football
1991 – Eli Sanders '54	Football
1992 – Buddy Hayes '66	Basketball
1992 – Tim Renfrow '83	Football/Baseball
1992 – Ronny Wilson '72	Football
1993 – Vic Lipscomb '70	Golf
1993 – Tori Quick '87	Women's Basketball
1994 – Fred "Skinny" Powers '51	Basketball
1994 – James Blair '83	Basketball
1995 – Pablo De Freitas '87	Soccer
1995 – Judy Nwajaku '90	W. Basketball/VB
1996 – Jimmy Littlefield '69	Basketball
1996 – Robert Mickle '85	Basketball
1997 – Bret Masters '89	Football/Baseball
1997 – Lou McCullough '49	Administrator
1997 – Greg O'Dell '92	Basketball
1998 – Shawn Graves '93	Football
1998 – Clay Griffin '88	Baseball
1999 – Keith Kinard '80	Football
1999 – Justin Laughlin '94	Baseball
1999 – Tony Peay '79	Soccer/Baseball
1999 – Wayne Rice '87	Basketball
1999 – Jason Smoak '93	Golf
2000 – Libby Corry '95	Women's Basketball
2000 – Bud Gault '35	Football/Baseball/Track
2000 – Tim Wallace '83	Baseball
2001 – Louise Maynard '96	Women's Tennis
2001 – Willie Pegram '68	Basketball
2002 – Chad McLain '91	Baseball
2002 – Danny Morrison '75	Athletic Director
2003 – Dan Williams '98	Football
2003 – Bridgid Meadow '98	Women's Soccer
2003 – A.M. Chreitzberg 1895	Baseball/Football
2004 – Dr. Sam Black '11	Coach
2004 – Mark Line	Baseball Coach
2005 – Stephon Blanding '90	Men's Basketball
2005 – Brenda Jackson '94	Women's Basketball
2005 – Darrell Brown '86	Men's Golf
2006 – Brian Bodor '01	Football
2006 – Ian Chadwick '01	Men's Basketball
2007 – Bobby Cannon '50	Football
2007 – Seth Chadwick '97	Men's Basketball
2007 – Jenny Nett '02	Women's Basketball
2008 – Travis Wilson '03	Football
2008 – Nathan Fuqua '03	Football
2008 – Michael Lenzly '03	Men's Basketball
2009 – Heidi Best '01	Women's Soccer
2009 – Jimmy Miner '04	Football
2009 – Matt Nelson '04	Football
2009 – Wendy Rohr '04	Women's Tennis
2010 – Lee Basinger '05	Football
2010 – Eric Deutsch '05	Football
2010 – William McGirt '01	Men's Golf
2010 – Ed Wile '73	Football
2011 – Katon Bethay '06	Football/Track and Field
2011 – Adrian Borders '05	Track and Field/Basketball
2011 – Ellen Rogers '06	Women's Tennis

HONORARY LETTERMAN

Bernard Harrelson	1981
Durwood Hatchell	1981
Dick Hardy	1982
Charles Newcome	1983
John Holliday	1984
Walter Booth	1985
Bobby Ivey	1986
Jesse Davis	1987
Larry Smith	1988
Cleveland Harley	1989
Joe Lesesne	1990
Junie White	1991
Keith Laws	1992
Ray Leonard	1993
James Talley	1994
Ray Henderson	1995
Mack Poole	1995
Talmage Skinner	1996
Ralph Voyles	1997
Lee Hanning	1998
Steve Kana	1999
John Keith, Jr.	1999
Mark Hauser	2000
Greg McKinney	2000
Tom Brown	2001
Pete Yanity	2002
Toccoa Switzer	2003
Bob Pinson	2004
Gordon Orr	2005
Woody Willard '74	2006
Dr. Dan Maultsby '61	2007
Bill Drake	2008
Lucy Quinn '83	2009
Mike Brown '76	2010
Joe Taylor '80	2010
Rob Gregory '64	2011

DISTINGUISHED SERVICE AWARD

Harry Williams	1993
Bob Pinson	1994
Ron Smith	1995
Jimmy Gibbs	1996
Douglas Joyce	1997
Martha Andrews	1998
Lt. Col. (ret.) Joe Miller	1999
Homozel Mickel Daniel (awarded posthumously)	2000
George Todd	2001
Joe Lesesne	2002
Robert Chapman '49	2003
Roger Milliken	2004
Cleveland Harley '50	2005
Grady Stewart '50	2006
Robbie Atkins '65	2007
Grover Eaker '34 (awarded posthumously)	2008
Eli Sanders '54	2009
Ann Johnson	2010
Craig Phillips	2011



DR. BENJAMIN DUNLAP

PRESIDENT

Dr. Benjamin Bernard Dunlap took office as Wofford's president in July 2000, becoming only the 10th chief executive in the 150-year history of the Phi Beta Kappa liberal arts college. A native of Columbia, S.C., Dunlap graduated summa cum laude from Sewanee: The University of the South in 1959. He attended Oxford University as a Rhodes Scholar and Harvard University as a graduate student, receiving his Ph.D. in English Language and Literature in 1967. From that year until 1993, he held academic appointments at Harvard and the University of South Carolina, where he was awarded both the USC Teacher of the Year Award and the university's Russell Award for Distinguished Scholarship. During that time, he twice served as a Fulbright Senior Lecturer in Bangkok, Thailand, and Chiang Mai, Thailand, and was also a member of the inaugural class of U.S.-Japan Leadership Fellows in Tokyo. In 1993, he accepted an appointment at Wofford College as the Chapman Family Professor in the Humanities, a position he still holds. In 2000, he became the 10th president of Wofford College.

Dunlap's academic fields include literature, intellectual history, Asian studies, film history and criticism, fiction writing, and the arts. On those subjects and others, especially leadership and higher education, he has lectured and spoken widely in this country and abroad including an appearance as one of "Fifty Remarkable People" at the 2007 TED Conference in Monterey. A frequent moderator for the Aspen Institute's Executive and C.E.O. Seminars as well as its Henry Crown Fellowship and such affiliated programs as the Executive Seminar Asia, the Faculty Seminars at Wye, the Aspen-Rodel Fellowship, the Africa Leadership Initiative, the Central European Leadership Initiative, and the Liberty Fellowship of South Carolina, he has also designed and moderated seminars in Europe, Africa, and the United States for corporate clients as varied as the Netflix Corporation, Young & Rubicam, the Waters Global Forum, the Nova Chemical Corporation, and the Arab Banking Corporation.

Dunlap's many publications include poems, essays, anthologies, guides, and opera libretti as well as two novels in manuscript, *Famous Dogs of the Civil War* and *Sunshine: The Autobiography of a Genius*. As a writer-producer and on-camera talent for public television, he has been a major contributor to more than 200 programs, for which he has won numerous national and international awards, and, for four and a half years in the 1970's and 80's, he performed as soloist and principal dancer for the Columbia City Ballet.

Since 1963, he has been married to Anne Boyd Dunlap. They have three grown children. In 2006, he was awarded an honorary doctorate by his alma mater, Sewanee: The University of the South.



Dr. Dunlap cheers for the Terriers at the 2010 NCAA Men's Basketball Tournament.

RICHARD JOHNSON

ATHLETIC DIRECTOR



Richard Johnson is in his eleventh year as director of athletics at Wofford College. The former head basketball coach has been an instrumental figure on campus for over 25 years.

Johnson officially began his new duties on Dec. 3, 2001. In 17 years as head basketball coach at Wofford (1985-2002), Johnson had a 100 percent graduation rate for all players who completed their eligibility under him. He was the runner-up for SoCon Coach of the Year honors twice in the Terriers' five seasons of league play under him. His 200th win was a 79-74 victory at Clemson during the 1999-2000 campaign.

A 1976 graduate of The Citadel, Johnson came to Wofford after serving nine years as a basketball assistant at his alma mater under legendary coach Les Robinson. Johnson also holds an MBA from The Citadel.

During his Wofford coaching tenure, Johnson guided the Terriers from NAIA membership to NCAA Division II in 1988, Division I Independent status in 1995 and the Southern Conference in 1997.

Over the past several years as athletic director, he also has been a driving force behind the development of several facility projects. Russell C. King Field and Switzer Stadium returned baseball to campus in 2003. The Richardson Building was renovated in 2008, while the Joe E. Taylor Athletic Building and a golf practice facility were completed in 2009. Johnson has also been responsible for the growth of the athletic endowment, with a long-term goal of endowing all scholarships in the department.

He currently chairs the Southern Conference's men's basketball committee and is a member of the NCAA's Legislative Council.

Johnson and his wife Carol, have two daughters, Lindsay and Lauren, and a son, Rich. Lindsay is a 2001 Wofford graduate and Lauren graduated from Wofford in 2003. The Johnsons also have three grandchildren. Lindsay and Brad Lowry are the parents of Louisa and Brady Lowry, while Lauren and Reece McWilliams are the parents of Mac McWilliams.

DR. JAMEICA HILL

FACULTY ATHLETIC REPRESENTATIVE



Dr. Jameica Hill '88, Professor and Chair of the Chemistry Department, is in her sixth year as the Faculty Athletic Representative (FAR) at Wofford.

Dr. Hill represents Wofford to the National Collegiate Athletic Association and the Southern Conference. She is responsible for certifying the eligibility of student-athletes and assuring integrity in the eligibility process. In addition to supervising athletics policies, the FAR also serves as a liaison between the faculty and the student athletes, looking out for their individual well-being with regard to academics and athletics.

Hill, a native of Due West, S.C. and a member of Phi Beta Kappa, earned her Ph.D. degree in inorganic chemistry at Clemson University, where she was a Graduate Teaching Assistant of the Year. She received Wofford's 1995 Martin Luther King Jr. Humanitarian Award and was also an associate director for a summer science program that was funded by a grant from the Howard Hughes Medical Center.

Hill's interest in athletics has been a lifelong one. Her father was a high school coach, and she participated in many different sports (including being named a SC All-State point guard and playing in the North/South game). As a professor at Wofford and the wife of Jason Hill '89, a former Wofford quarterback and assistant coach, Hill has always supported Terrier athletics. Her daughter Shelby is active in competitive cheerleading (Level 5—Worlds Division), while her son J.L. plays football as well as AAU basketball on a team based in Greenville.

Hill, a 1988 graduate of Wofford, was also a cheerleader for the football and basketball teams as a student.



TERRI LEWITT

ASSOCIATE ATHLETIC DIRECTOR FOR DEVELOPMENT / SWA

Terri Lewitt is in her 27th year as a member of the Wofford athletic department. Lewitt's main duties revolve around the Terrier Club and serving as the Senior Woman Administrator.

She also chairs, along with the Terrier Club president, many of the events and activities administered by the Terrier Club and its board of directors, including the Terrier Ball.

After coming to the college as an administrative assistant in March 1985, Lewitt became the sports information director two months later. In addition to those duties, she was the business and ticket manager for the department. She has also served as the compliance director.

In 2008, she was recognized by the Southern Conference for her role in the growth of women's athletics as the conference celebrated 25 years of women's championships.

Lewitt was promoted to assistant athletic director in 1989 and to associate director in 1996. The Burlington, N.C. native earned her B.A. degree in history from Elon in 1984. Lewitt and her husband, Mark, have two children: Lauren and David.



MARK LINE

ASSOCIATE ATHLETIC DIRECTOR FOR INTERNAL OPERATIONS

Mark Line, Wofford's all-time winningest baseball coach, returned to the Terrier athletic department in July 2003 in the role of associate athletic director for internal operations and sports programs. Among his myriad of duties, Line supervises the Olympic sports while also overseeing the department's budget and serving as liaison to the Carolina Panthers and several on-campus groups and committees.

A 1977 graduate of Erskine, Line posted a 210-158 record (.571) in 10 years as the Terriers baseball coach (1986-95). He received District Coach of the Year honors in his second season as the 1987 squad put together as a 23-11 mark. Wofford then set a single-season school record for victories the following campaign with a 27-12 record. It marked the first time Wofford qualified for postseason play in consecutive seasons. Line's 1991 team established another Terrier mark for wins with a 30-9 record.

Line was selected as a 2004 inductee into Wofford's Athletic Hall of Fame. The first-base dugout at Russell C. King Field, the Terriers' on-campus baseball facility, is named in his honor.

Line has served as chairman of the physical education department since 1988. Following the 1995 season, Line accepted a role as associate dean of students in the Wofford student affairs office. He worked with volunteer services, Bonner Scholars, the campus judicial system and a host of other activities involving campus life.

Line and his wife, Pam, have two children: Alyse, a 2010 graduate of Wofford, and Sam, a junior baseball player at Emory and Henry.



AL CLARK III

ASSISTANT ATHLETIC DIRECTOR FOR DEVELOPMENT AND MAJOR GIFTS

Al Clark is in his sixth year on the Wofford staff. For two years, he served as the assistant director of the Terrier Club. In May, 2008, he was promoted to assistant athletic director for development and major gifts. In this role, Clark has responsibility for many of the major fundraising efforts for the athletic department. Included in these efforts are scholarship endowments and facilities, such as the Taylor Center.

He also continues to coordinate the Terrier Club Mini-Tour, a series of golf tournaments held throughout the Southeast that help raise scholarship funds for Wofford student-athletes. Clark worked for five years as a sales executive before joining the Wofford staff in 2007.

Clark is a third generation Wofford football player. His father, Al Clark Jr. '76, and grandfather, Al Clark Sr. '50, preceded him as Terriers. On the field, Al III was a four-year letterman and was Wofford's Linebacker of the Year in 2000. He was a preseason All-SoCon selection in 2001 and his 79-yard fumble return vs. Middle Tennessee State in 1999 is the second-longest in Wofford history.



A 1996 graduate of Dorman High School, Clark was the team's Defensive Player of the Year as a senior. Clark graduated from Wofford in 2001 with a bachelor of arts in history. He and his wife Jennifer reside in Spartanburg.

ANDY KIAH

DIRECTOR OF ATHLETIC FACILITIES

Andy Kiah is in his 16th year on the staff at Wofford and tenth as the director of athletic facilities.

Kiah oversees the maintenance and operation of all athletic facilities, including Gibbs Stadium, the practice fields, the Richardson Building, Snyder Field, Russell C. King Field and the Benjamin Johnson Arena. Wofford's facilities, which are also used by the Carolina Panthers for training camp, have been ranked among the best in the country.

Kiah first came to Wofford as an assistant baseball coach. A 1996 graduate of the University of Massachusetts, Kiah was a four-year letterman for the UMass baseball team. The 1996 Minuteman squad advanced to the NCAA Regionals and was within one game of reaching the College World Series. He was captain of the 1996 team that set a school record with 40 wins.

A native of Brewer, Maine, Kiah holds a bachelor's degree in sports management from the University of Massachusetts. His wife Amy, is head coach of the Wofford women's soccer team. They have two daughters, Kayleigh and Mikenna.



LENNY MATHIS

ASSISTANT ATHLETIC DIRECTOR FOR MARKETING AND PROMOTIONS

Lenny Mathis joined the Wofford staff in 2003 as the assistant athletic director for marketing and promotions.

Mathis came to Wofford after serving as the general manager of the Spartanburg Stingers in the Coastal Plain League, a summer wooden bat baseball league for collegiate players. He directed the Stinger operations in their inaugural 2003 season.

Mathis is a 2000 graduate of the University of South Carolina where he received a degree in sport and entertainment management. Mathis comes from a minor league baseball background. Prior to running the Stingers, he served as the director of ticket operations in 2002 for the Class A Savannah Sand Gnats (an affiliate of the Texas Rangers at the time). He also worked two summers, 1999 and 2000, with the Greenville Braves (then a AA affiliate of the Atlanta Braves). In 2000-01, he served as a marketing representative for the Clemson Tiger Network's radio affiliate in Columbia, SC.

A native of Manning, S.C., Mathis volunteers his time as the media and public relations chairman for the Carolina Miracle League, a baseball league for children with disabilities in Spartanburg County and surrounding areas. He is also a member of the National Association of Collegiate Marketing Administrators (NACMA), co-chair of Spartanburg Young Professionals (SYP) and serves as the president of the "Friends of Duncan Park," a grass roots organization working to preserve Historic Duncan Park Stadium in Spartanburg, South Carolina's oldest baseball park (1926). He and Amanda Ingram were married on May 30, 2009.



ELIZABETH RABB

ASSISTANT ATHLETIC DIRECTOR FOR COMPLIANCE

Elizabeth Rabb is in her eleventh year as a member of the Wofford athletic department. In her current role, she oversees NCAA, Southern Conference and Wofford regulatory issues for all Terrier student-athletes. This includes interpreting NCAA regulations and monitoring recruiting, financial aid and eligibility issues.

In July she ended a three-year term as a member of the NCAA's Administration Cabinet. Rabb will begin serving on the NCAA's Olympic Sports Liaison Committee in September. She has also served as Wofford's ticket manager and cheerleading coach during her tenure at Wofford.

A native of Johnson City, Tenn., Rabb earned a B.A. degree in history from Wofford in 2001. She earned her master's degree from Converse College in December 2007. While an undergraduate, she worked as a student assistant in the athletic department and was a member of both the



cheerleading and dance squads. Rabb also worked as an intern at East Tennessee State and the Southern Conference office.

Rabb and her husband, Marc, were married on June 23, 2007. Marc is the director of media relations at Gardner-Webb University. Their daughter, Ella, was born in June of 2010.

BRENT WILLIAMSON ASSISTANT ATHLETIC DIRECTOR FOR MEDIA RELATIONS

Brent Williamson is in his fifth season at Wofford as Assistant Athletic Director for Media Relations. He joined the Terriers after spending four years as the Assistant Athletic Director for Public Relations at the University of Maine.



He is responsible for the media relations operations for the Wofford College Athletic Department and is the primary contact for football, men's basketball and baseball. He oversees all department publications, news releases and the website.

In four years at Maine, Williamson oversaw the media relations for nineteen sports. He was the primary contact for the men's ice hockey team, which advanced to three NCAA Frozen Fours. He worked with six All-Americans and a Hobey Baker Finalist, along with several current NHL players and two Stanley Cup Champions. At Maine he also oversaw the development and production of a bi-weekly television show, *The Black Bear Insider*, along with other special projects.

Prior to Maine, he spent eight years working in media relations in the National Football League. After two seasons with the Atlanta Falcons, he joined the Jacksonville Jaguars in 1997. In 2002, he was named Director of Media Relations for the Houston Texans. He assisted in the media relations operations at four Super Bowls.

A native of Taylors, S.C., Williamson graduated from Wake Forest University in 1994 with a bachelors degree in history. He added a masters of sports management from the University of Richmond in 1996. His grandfather, W.S. Williamson, graduated from Wofford College in 1932.

JUSTIN CROUCH SPORTS MARKETING/IMG COLLEGE

Justin Crouch is in his first season as the account executive for Wofford Sports Properties and IMG College. In this role, he is responsible for the development of corporate sponsorships for Wofford College. Along with researching prospects and developing proposals, he handles the fulfillment of sponsorship agreements.



Before working at Wofford, he served as a sports travel representative for Young Transportation. He also worked as marketing manager for Sideline Marketing Group. Crouch completed summer internships with the Cincinnati Bengals, UNC Asheville and Carolina Financial Group.

He is a 2008 graduate of the University of North Carolina and earned a MBA in Sports Marketing and Management from the University of North Carolina at Charlotte in December 2010.

RUSS BRADLEY DIRECTOR OF VIDEO SERVICES

Russ Bradley joined the Wofford staff in July of 2010 as the Director of Video Services. Bradley oversees TerrierVision, and is responsible for video services throughout the athletic department, including the training of students as members of the Video Services Department. He also works with the Wofford College Communications Department on projects.



Bradley came to Wofford after 28 years in television, most recently at WSPA-TV in Spartanburg. Bradley began his television career while still in high school, worked his way through college as a reporter and photographer for his hometown television station, and during his career has covered everything from hurricanes to Super Bowls. He also spent eleven seasons as part of the "Inside Wofford Football" television show crew.

A native of Charleston, SC, Bradley is an alumnus of Leadership South Carolina and Leadership Spartanburg, and attended The Poynter Institute where he completed the Media Leadership program in 2005. Bradley also volunteers his time for several Upstate charities and his local church. He is married to Karen Bradley, executive director of TOTAL Ministries in Spartanburg.

SHELBY TAYLOR

TICKET MANAGER

Shelby Taylor is in her sixth year as Wofford's ticket manager. She joined the Terrier staff in 2006 after working as a sales representative for Powers Solutions. In her role, she supervises all ticket operations including season and game day sales. She has also been responsible for the Terriers move to electronic ticketing for football and basketball.

Taylor is a 1982 graduate of the University of South Carolina-Upstate with a bachelor of science degree in administration.

She and her husband David are the parents of a daughter, Meg, a sophomore volleyball player at Gardner-Webb, and a son, Rob.



ANN HOPKINS

BUSINESS AND OPERATIONS MANAGER

Ann Hopkins joined the Wofford staff in the summer of 2011 as the business and operations manager. In this role she will oversee budgeting for the athletic department and be the liason with the business office. She will also work with game operations.

Prior to Wofford, she worked at Wachovia, as well as The Shaw Group in business management and First Colony Corporation as an investment analyst and development coordinator.

Hopkins graduated from Wofford in 2004 with a degree in business economics. While at Wofford she studied abroad at the London School of Economics and in Florence, Italy. She earned a MBA from the McColl School of Business in December 2009. She and her husband, Spencer, reside in Spartanburg.



KEVIN YOUNG

ASSISTANT ATHLETIC MEDIA RELATIONS

Kevin Young is in his second season at Wofford as the assistant athletic media relations director. He is the primary contact for the volleyball, women's basketball, men's and women's golf, and men's and women's cross country/track and field teams.

Prior to joining Wofford, he served for two years as the Sports Information Director at Lees-McRae College, where he oversaw the media relations for eighteen sports.

A 2008 graduate of Anderson University with a degree in communications with a concentration in public relations and marketing, he was the assistant sports information director for two years as a student and also worked game operations. He is a native of Lexington, South Carolina.



TODD RIEDEL

DIRECTOR OF STRENGTH AND CONDITIONING

Todd Riedel is in his second season at Wofford as the Director of Strength and Conditioning.

Riedel came to Wofford following one year at Missouri State University where he served as the associate director of strength and conditioning, where he headed up the strength and conditioning efforts for the softball, volleyball and men's and women's soccer programs.

Prior to Missouri State, Riedel spent a year at Western Kentucky working directly with football, and conducted programs for soccer, tennis and cheerleading.

Riedel's previous experience was at Colgate University where he assisted with football and was directly responsible for twelve Olympic sports. He also has additional experience as an intern at Xavier, Harvard and West Virginia University.

A native of Cincinnati, Ohio, Riedel graduated from the College of Mount Saint Joseph in 2001 with a bachelor's degree in Physical Education and Health. He also earned a Master of Education in Sports Administration from Xavier University in 2006.

He is a member of numerous professional organizations and is certified by the International Sport Science Association, USA Weightlifting, and has two certifications through National Strength & Conditioning Association. Riedel and his family reside in Spartanburg.



2012 WOFFORD WOMEN'S TENNIS



RYAN BRIDGES
Media Relations Intern



CHARLIE COON
Marketing Intern



RYAN FALCK
Strength and Conditioning Intern



KENDRA FUNK
Athletic Training Intern



CHELSE HILBOURN
Marketing Intern



TYLER LAMPERT
Strength and Conditioning Intern



JON MANGEL
Strength and Conditioning Assistant



DANA MASON
Administrative Assistant



ASHLEE REVELL
Athletic Training Intern



RON ROBINSON
Chaplain



GORDON RODGERS
Office Assistant



CAROLINE THOMAS
Administrative Assistant



TRAVIS THORNBERRY
Compliance Intern



ERIC TOOKER
Strength and Conditioning Intern



TRACI WILSON
Administrative Assistant



DIAGO YAZAWA
Facilities Intern



ATHLETIC FACILITIES



GIBBS STADIUM



BENJAMIN JOHNSON ARENA



RICHARDSON ATHLETIC BUILDING



SNYDER FIELD



RUSSELL C. KING FIELD



JOE E. TAYLOR ATHLETIC CENTER



REEVES TENNIS CENTER



RIFLE RANGE



COUNTRY CLUB OF SPARTANBURG

2012 SCHEDULE

<u>DATE</u>	<u>OPPONENT</u>	<u>TIME</u>
1/15	Winthrop	1:00 p.m.
1/28	at North Carolina A&T	1:00 p.m.
2/9	USC Upstate	2:00 p.m.
2/11	at UNC Asheville	3:00 p.m.
2/17	Kennesaw State	2:00 p.m.
2/18	at Charleston Southern	2:00 p.m.
2/24	at Gardner-Webb	2:00 p.m.
2/26	at Coastal Carolina	12:00 p.m.
3/1	Charlotte	2:00 p.m.
3/4	UAB	11:00 a.m.
3/17	at College of Charleston*	1:00 p.m.
3/22	at Presbyterian College	2:00 p.m.
3/24	Chattanooga*	12:00 p.m.
3/25	Samford*	12:00 p.m.
3/28	Furman*	3:00 p.m.
3/31	at UNC Greensboro*	12:00 p.m.
4/1	at Elon*	1:00 p.m.
4/5	Appalachian State*	3:00 p.m.
4/7	at Georgia Southern*	11:00 a.m.
4/11	Davidson*	3:00 p.m.
4/14	at Western Carolina*	11:00 a.m.
4/19-22	Southern Conference Tournament	TBA

* = SOUTHERN CONFERENCE MATCH

