

Wofford College

## Digital Commons @ Wofford

---

Media Guides

Athletics

---

2012

### Men's Tennis Media Guide 2012-13

Wofford College. Department of Athletics

Follow this and additional works at: <https://digitalcommons.wofford.edu/mediaguides>

---

#### Recommended Citation

Wofford College. Department of Athletics, "Men's Tennis Media Guide 2012-13" (2012). *Media Guides*. 10. <https://digitalcommons.wofford.edu/mediaguides/10>

This Book is brought to you for free and open access by the Athletics at Digital Commons @ Wofford. It has been accepted for inclusion in Media Guides by an authorized administrator of Digital Commons @ Wofford. For more information, please contact [stonerp@wofford.edu](mailto:stonerp@wofford.edu).

# WOFFORD



tinus van wyk

stuart robertson

drew superstein

## 2012 MEN'S TENNIS MEDIA GUIDE



1550 STUDENTS

331 ATHLETES

18 SPORTS

1 LETTER <sup>TM</sup>

W

WOFFORD

---

---



# WOFFORD

## 2012 MEN'S TENNIS MEDIA GUIDE



### TABLE OF CONTENTS

Quick Facts ..... 2  
 Media Information ..... 3  
 Wofford ..... 4-6  
 Richardson Building ..... 7  
 Strength and Conditioning ..... 8  
 Reeves Tennis Center ..... 9  
 Head Coach Rod Ray ..... 10  
 2011-12 Roster ..... 11-12  
 Player Bios ..... 13-27  
 Support Staff ..... 27  
 2011 Results/Stats ..... 28-30  
 Year-by-Year Records ..... 31  
 Season Records ..... 32  
 All-Southern Conference ..... 33  
 Honors and Awards ..... 34  
 Year-by-Year Results ..... 35-40  
 All-Time Roster ..... 41-42  
 Spartanburg ..... 43  
 The Southern Conference ..... 44-45  
 Hall of Fame ..... 46  
 Wofford Administration ..... 47-49  
 Wofford Athletic Staff ..... 50

### 2012 SCHEDULE

DATE	TIME	OPPONENT
Jan. 21	4:00 pm	at South Carolina
Jan. 27	2:00 pm	at Winthrop
Jan. 31	2:30 pm	USC Lancaster
Feb. 4	12:00 pm	at Florida Atlantic
Feb. 11	1:00 pm	Coastal Carolina
Feb. 16	2:30 pm	Presbyterian College
Feb. 19	3:00 pm	at UNC Asheville
Feb. 21	2:30 pm	at Charlotte
Feb. 28	2:30 pm	at Gardner-Webb
Mar. 6	3:00 pm	Spartanburg Methodist
Mar. 10	10:00 am	at Samford*
Mar. 15	2:30 pm	College of Charleston*
Mar. 17	1:00 pm	The Citadel*
Mar. 24	1:00 pm	UNC Greensboro*
Mar. 26	1:00 pm	Georgia Southern*
Mar. 31	1:00 pm	at Chattanooga*
Apr. 1	1:00 pm	Elon*
Apr. 4	2:30 pm	at Appalachian State*
Apr. 11	3:00 pm	at Davidson*
Apr. 14	1:00 pm	at Furman*
Apr. 19-22	TBA	Southern Conference Tourney

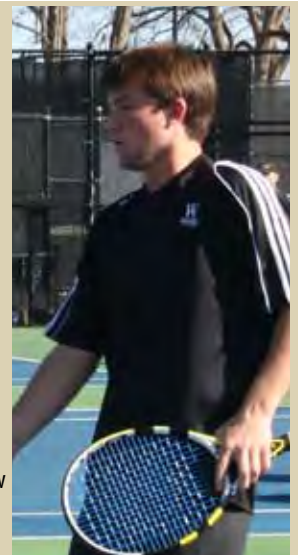
*\*SOUTHERN CONFERENCE MATCHES*

#### RANDALL HEFFRON (1991-2011)

This season, the Terriers will be playing in memory of Randall Heffron. Heffron, a sophomore member of the Wofford men's tennis team, passed away on Saturday, September 10.

"The Wofford campus family is saddened by this tragic and untimely death," said Dr. Benjamin Dunlap. "Randall was well-loved and respected by his fellow tennis players, his friends and classmates. He will be greatly missed. Our deepest sympathies are with his family, especially his brother, Walker, a freshman here at Wofford."

As a freshman, Heffron played in five doubles matches for the Terriers and posted a 1-4 record. He played under coaches Skip Reville and Allen Moore at Bishop England High School, where he led the team to four consecutive region championship titles, from 2007-2010 and two second place finishes in the South Carolina state championships. Heffron started at the No. 1 spot in singles and doubles for his sophomore, junior and senior years. He was selected to the All-Low Country team all four years with the varsity program and honored as an All-State pick for three years.



## QUICK FACTS

### General Information

Location .....	Spartanburg, S.C.
Founded .....	1854
Enrollment .....	1,550
Nickname .....	Terriers
Colors .....	Old Gold (PMS 873) and Black
Affiliation .....	NCAA Division I
Conference .....	Southern
President .....	Dr. Benjamin B. Dunlap
Athletics Director .....	Richard Johnson
Faculty Athletic Rep .....	Dr. Jameica Hill
Facilities .....	Reeves Tennis Center
Opened .....	1992
Athletic Department Phone .....	864-597-4090
Athletic Department Fax .....	864-597-4129
Mailing Address .....	429 North Church Street
.....	Spartanburg, S.C. 29303

### Campus Administration

President: .....	Dr. Benjamin B. Dunlap (University of the South '59)
Faculty Athletic Representative: .....	Dr. Jameica Hill (Wofford '88)
Athletic Director: .....	Richard Johnson (The Citadel '76)
Athletic Department Phone: .....	(864) 597-4090
Athletics Web Site: .....	www.woffordterriers.com

### Tennis Staff

Head Coach .....	Rod Ray
Alma Mater .....	East Tennessee State '87
Seasons at Wofford .....	12th in 2012
Record at Wofford (Men) .....	94-128 (.423)
Longest Match Win Streak .....	14 (2009-10)
Tennis Office Phone .....	864-597-4154
Coach Ray Email .....	rayra@wofford.edu

### Team Information

2010-11 Overall Record .....	8-13
Home Record .....	5-4
Away Record .....	3-7
Neutral Record .....	0-2
SoCon Record (Placing) .....	4-6 (7th of 11)
Letterwinners Returning/Lost .....	11/5
Newcomers .....	7

### Tennis History

Number of Seasons .....	85th season in 2012
All-Time Record .....	440-553 (.443)
First Match .....	March 19, 1890
Year Men's Tennis Became Team Sport .....	1920
Overall SoCon Record .....	50-84 (.373)

### Athletic Administration

Athletic Director .....	Richard Johnson
Associate AD/Development .....	Terri Lewitt
Associate AD/Sports Programs .....	Mark Line
Assistant AD/Media Relations .....	Brent Williamson
Assistant AD/Marketing and Promotions .....	Lenny Mathis
Assistant AD/Development and Major Gifts .....	Al Clark
Assistant AD/Compliance .....	Elizabeth Rabb
Director of Facilities .....	Andy Kiah
Director of Video Services .....	Russ Bradley
Sports Marketing/IMG College .....	Justin Crouch
Business and Operations Manager .....	Ann Hopkins
Asst. Athletic Media Relations Director .....	Kevin Young
Sports Information Assistant .....	Ryan Bridges
Marketing and Promotions Assistant .....	Charlie Coon
Marketing and Promotions Assistant .....	Chelsie Hilbourn
Compliance Assistant .....	Travis Thornberry
Facilities Assistant .....	Daigo Yazawa
Ticket Manager .....	Shelby Taylor
Administrative Assistant .....	Caroline Thomas
Administrative Assistant - Football .....	Traci Wilson
Administrative Assistant - Coaches .....	Dana Mason



Wofford College was founded in 1854. The colleges' mascot is "Boss" the Terrier.

### Credits

The 2012 Wofford College men's tennis media guide is a publication of the Wofford athletic media relations office. Editor: Ryan Bridges. Editorial assistance provided by Brent Williamson and Rod Ray. Research conducted by Phillip Stone of the Wofford Library Archives. Photographs provided by Willis Glassgow, Mark Olencki, and Ryan Bridges. Headshots by Mark Olencki.

### Wofford College Mission Statement

Wofford's mission is to provide superior (quintessential) liberal arts education that prepares its students for extraordinary and positive contributions to society. The focus of Wofford's mission is upon fostering commitment to excellence in character, performance, leadership, service to others, and life-long learning.





## MEDIA

### Interviews

All interviews with members of the team during the season must be arranged through the Athletic Media Relations Office. Please call ahead and allow 24 hours to set up interviews with players. Arrangements will be made for telephone and in-person interviews at a time that is mutually agreeable to the reporter/broadcaster and the student-athlete. Any television crews wishing to tape an interview with Coach Ray may do so daily before practice. Please call ahead to allow an office representative to help facilitate the interview.

### Parking

Parking for all members of the working media for Terrier home tennis matches can be found across the street from the Reeves Tennis Center.

### Post Match Interviews

Post match interviews will take place at the Wofford locker room in the Reeves Tennis Center. Student-athletes are available outside the locker room following the conclusion of their matches.

### NEWSPAPERS

#### SPARTANBURG HERALD-JOURNAL

sports@shj.com  
Bob Dalton, Sports Editor  
bob.dalton@shj.com  
864-562-7293  
Todd Shanesy, College Beat  
todd.shanesy@shj.com  
864-562-7273  
P.O. Box 1657  
Spartanburg, S.C. 29304  
Fax: 864-594-6234

#### GREENVILLE NEWS

sports@greenvillenews.com  
Bart Wright, Sports Editor  
rbwright@greenvillenews.com  
Jim Rice  
jrice@greenvillenews.com  
Box 1688  
Greenville, S.C. 29602  
864-298-4135  
Fax: 864-298-4137

#### THE STATE

statesports@thestate.com  
Rick Millans, Sports Editor  
rmillans@thestate.com  
Neil White, State colleges  
nwhite@thestate.com  
803-771-8643  
Box 1333  
Columbia, S.C. 29202  
803-771-8470  
Fax: 803-771-8613

### TELEVISION

#### WYFF-TV 4 (NBC)

Brad Fralick, Sports Director  
bfralick@hearst.com  
Mike Giordano, Weekend Anchor  
mgiordano@hearst.com  
Marc Dopher, Reporter  
mdopher@wyff4.com  
Box 788  
Greenville, S.C. 29602  
864-240-5265 – Fralick  
864-240-5264 – Giordano  
Fax: 864-240-5305

#### WSPA-TV 7 (CBS)

Pete Yanity, Sports Director  
pyanity@wspa.com  
864-587-5452  
Todd Summers, Weekend Anchor  
tsummers@wspa.com  
Box 1717  
Spartanburg, S.C. 29304  
864-576-7777  
Sports: 864-587-5452  
Fax: 864-587-5430

#### WHNS-TV 21 (FOX)

foxcarolinanews@foxcarolina.com  
864-213-2222  
21 Interstate Court  
Greenville, S.C. 29615  
864-213-2223  
Fax: 864-987-1219

#### WLOS-TV 13 (ABC)

sports@wlos.com  
Stan Pamfilis, Sports Director  
pamfilis@wlos.com  
Adam Kohler, Reporter  
akohler@wlos.com  
110 Technology Drive  
Asheville, N.C. 28803  
828-651-4563/4567  
Fax: 828-651-4618

### WIRE

#### THE ASSOCIATED PRESS

apcolumbia@ap.org  
Pete Iacobelli, Sports Editor  
piacobelli@ap.org  
1311 Marion Street  
Columbia, S.C. 29201  
803-799-5510  
1-800-922-1565  
Fax: 803-252-2913

## ATHLETIC MEDIA RELATIONS

Assistant AD for Media Relations Brent Williamson

Office Phone: 864-597-4093

E-Mail: williamsondb@wofford.edu

FAX: 864-597-4129

Press Box: 864-597-4478

Assistant Director for Media Relations: Kevin Young

E-Mail: youngkm@wofford.edu

Office Phone: 864-597-4092

Media Relations Assistant (TENNIS CONTACT): Ryan Bridges

E-Mail: bridgesrs@wofford.edu

Office Phone: 864-597-4098

Mailing Address: 429 North Church Street, Spartanburg, S.C. 29303

Gibbs Stadium Press Box: 864-597-4487

Athletic website: www.woffordterriers.com

## WOFFORDTERRIERS.COM

In the fall of 2009, Wofford College launched an updated website for athletics which can be found at www.woffordterriers.com. The site contains all the information any Terrier fan is looking for, including rosters, schedules, student-athlete bios, updated statistics and archives. Live stats for most sports are also provided. Another key feature is TerrierVision. With this pay-per-view video service, fans can watch a wide variety of events, including football, men's and women's basketball and baseball, live on any computer with a broadband connection.



## DIRECTIONS TO CAMPUS

**From the West/GSP Airport:** Take I-85 north to exit 69 (Business 85 North). Exit at 5A, I-585 South/US 176. After 2.5 miles, turn right on McCravy, then left at the light on Wood Street, which turns into Cummings Street. Street leads to Gibbs Stadium and campus.

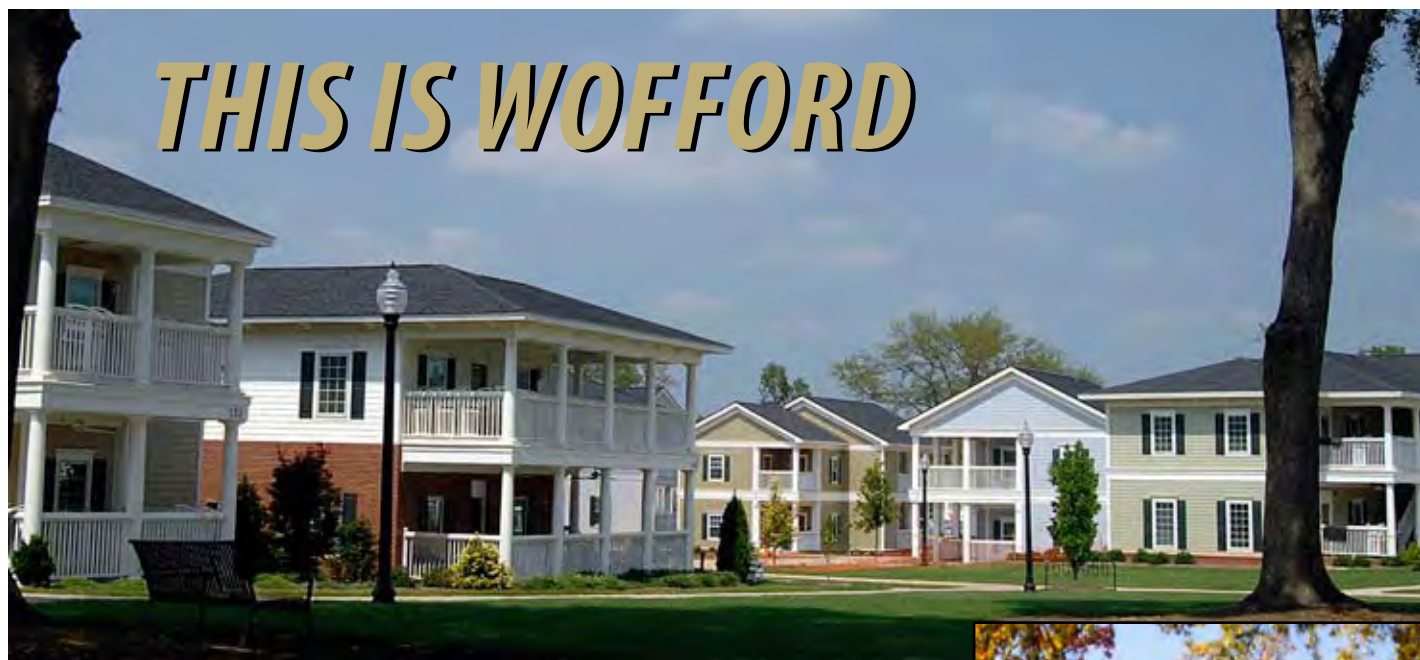
**From the North:** Take I-26 east to exit 15 (US 176). Follow for 7 miles. Turn right on McCravy, then left at the light on Wood Street, which turns into Cummings Street. Street leads to Gibbs Stadium and campus.

**From the East/Charlotte Airport:** Take I-85 south to exit 77 (Business 85 South). Exit at 5A, I-585 South/US 176. After 2.5 miles, turn right on McCravy, then left at the light on Wood Street, which turns into Cummings Street. Street leads to Gibbs Stadium and campus.

**From the South:** Take I-26 west to exit 21B (US 29 North). After 3.5 miles, turn left on St. John Street. Turn left at North Church Street. Turn right on Evins Street to reach the athletic facilities.



## THIS IS WOFFORD



Wofford College, established in 1854, is an independent liberal arts college located in Spartanburg, S.C. It offers bachelor's degrees in 26 major fields of study, and is well known for its programs leading to graduate and professional studies. Affiliated with the United Methodist Church, the college is committed to quintessential undergraduate education within the context of values-based inquiry.

Wofford College consistently finds itself as a benchmark for what higher education should be now and in the future, and how students can find an exciting and fulfilling undergraduate experience that also is a good value both in financial investment and in value-added by that educational experience.

The college has scored high on the National Survey of Student Engagement (NSSE), which measures the level of academic challenge, active and collaborative learning, student-faculty interaction, enriching educational experiences, and a supportive campus environment.

Wofford can be found in numerous college guides that provide perspectives from a variety of sources. Among those are *U.S. News & World Report's* "America's Best Colleges," *The Princeton Review's* "Best 376 Colleges," *The Fiske Guide to Colleges*, *The (Yale) Insider's Guide*, and *Peterson's Colleges for Top Students*.

*Forbes.com* ranked Wofford as one of "America's Best Colleges" in 2011, the highest rated institution in South Carolina. In its November 2010 issue, *Kiplinger's Personal Finance* magazine ranked Wofford among the nation's best private college values, at number 31.

Wofford consistently lands on "best value" lists in various other national college guides and publications. In *U.S. News & World Report's* 2010 "America's Best Colleges," Wofford was included in "Great Schools, Great Prices," a listing of 31 liberal arts colleges.

Wofford ranks ninth in the country in the percentage of undergraduates receiving credit for studying abroad, according to *Open Doors 2010*, a report published by the Institute of International Education (IIE).

The Village, Wofford's apartment-style housing for its senior students, has earned a number of national recognitions. Phase V of The Village will open in the fall of 2011 with loft-style apartments along with a grand galleria, deli restaurant and market. It will be anchored by the Center for Professional Excellence.

Wofford was named to the President's Higher Education Community Service for 2010, presented by the Corporation for National and Community Service, an independent federal agency tasked with fostering an ethic of volunteerism and service in America. Wofford also was included in the 2009 Guide to Service-Learning Colleges & Universities, highlighting the college's programs to encourage student engagement.

Wofford's entire 175-acre campus is a national arboretum, which was named the Roger Milliken Arboretum at Wofford College in honor of the late longtime trustee and benefactor. More than 5,000 trees have been planted on the Wofford campus since 1992.





# ACADEMICS



Wofford offers distinctive learning opportunities that set it apart from other liberal arts colleges. They provide students with meaningful study-abroad experiences, exciting and socially useful service opportunities, career-related and experiential learning possibilities, interaction with great academicians from across the world, and exposure to renowned authors, artists, and business and professional leaders. Such "focal point" programs include, but are not limited to:

**The Interim**, a January term that encourages students and faculty to explore new interests both on and off campus.

**The Bonner Scholar Program**, a service-learning scholarship program that places deserving students in volunteer positions throughout the community.

**The Success Initiative**, a leadership and scholarship program that offers practical, project-based experience.

**The Vocational Discernment and Pre-Ministerial Program**, a counseling and mentoring approach to helping students make personal decisions regarding further study and careers in the ministry.

**Environmental Studies** provides a creative and supportive learning environment that helps students pursue their goals in the rigorous and challenging program. It operates both on Wofford's campus and at the new Glendale Shoals Environmental Studies Center at Glendale, S.C. The property where the center is located borders 19 acres of protected green space along the Lawson's Fork Creek.

**Neuroscience**, a program in which students examine the nervous system and its regulation of behavior through an experimental approach, offered jointly by the Departments of Psychology and Biology.

**Computational Science**, a fast-growing interdisciplinary field that is at the intersection of the sciences, computer science and mathematics, involves learning to store, retrieve, process and visualize massive amounts of information in web-accessed databases.

**Learning Communities**, an interdisciplinary approach to learning that links courses in two or more departments through a common theme.

**The Novel Experience**, a first-year reading and writing program that offers an introduction to the academic rigors of Wofford while familiarizing students with the Spartanburg community.

**The Creative Writing Concentration**, a program led by outstanding published faculty writers that provides additional opportunities for students to hone their creative writing skills, earn coveted prizes and become published writers themselves.

**Presidential International Scholar**, an opportunity for an outstanding, intellectually gifted student to visit other parts of the world researching specific academic areas of interest.

**The Community of Scholars**. Student fellows in this summer program work under the supervision of faculty mentors engaged in parallel or related research. The projects encompass all disciplines, including science, the humanities, the social sciences and the fine arts.

**Presidential Seminar**, a weekly seminar hosted by Wofford President Benjamin Dunlap for outstanding seniors, in which seminar members explore interdisciplinary subjects of current significance.

**Liberty Fellowship**, a two-year leadership experience hosted by the college and a partnership of South Carolina businessman Hayne Hipp, of Greenville, the Aspen Institute and Wofford, for young citizens of South Carolina with exemplary promise for societal achievement.

## ACADEMIC MAJORS

Accounting  
 Art History  
 Biology  
 Business Economics  
 Chemistry  
 Chinese  
 Computer Science  
 Economics  
 English  
 Environmental Studies  
 Finance  
 French  
 German  
 Government  
 History  
 Humanities  
 Intercultural Studies  
 Intercultural Studies for Business  
 Mathematics  
 Philosophy  
 Physics  
 Psychology

Religion  
 Sociology  
 Spanish  
 Theatre

## ACADEMIC MINORS

Art History  
 Business  
 Chinese Studies  
 Computer Science  
 Economics  
 English  
 Environmental Studies  
 German Studies  
 Government  
 History  
 Mathematics  
 Philosophy  
 Religion  
 Sociology

## PRE-PROFESSIONAL PROGRAMS

Pre-Engineering  
 Pre-Dental  
 Pre-Law  
 Pre-Medical  
 Pre-Ministry  
 Pre-Pharmacy  
 Pre-Veterinary Science

## OTHER PROGRAMS

African/African-American Studies  
 Communications/Journalism  
 Computational Science  
 Creative Writing  
 Gender Studies  
 Geology  
 Information Management  
 Latin American & Caribbean Studies  
 Medical Humanities  
 Military Science  
 Music  
 Neuroscience  
 19th Century Studies





# PROMINENT ALUMNI

Wofford alumni live in all 50 states and more than 25 foreign countries. They include five Rhodes Scholars, five Truman Scholars and two Barry M. Goldwater Scholars.

Of 15,994 living alumni (graduates and non-graduates), 1,155 are presidents or owners of corporations or organizations, 1,213 are practicing medicine, dentistry or other health-care professions, and 732 are attorneys or judges.

## MAJOR GENERAL RODNEY ANDERSON '79

Deputy Commanding General, XVIII Airborne Corps

## DAVID BRESENHAM '93

Producer of *Keeping Up With the Kardashians*. Has also worked on *Real World/Road Rules Challenge* and *Big Brother*.

## HAROLD CHANDLER '71

CEO, Univers Workplace Benefits

## MICHAEL COPPS '63

Commissioner, Federal Communications Commission. Previously served as Assistant Secretary of Commerce for Trade Development.

## FISHER DEBERRY '60

Former football coach at Air Force (1983-2006) and served as president of American Football Coaches Association.

## CHAD FIVEASH '94

Writer and producer of television series such as *Kyle XY*, *Glory Daze*, *One Tree Hill* and *Switched at Birth*.

## VAN HIPPI, JR. '82

President and CEO, American Defense Institute

## CRAIG MELVIN '01

Reporter for MSNBC and NBC News Correspondent

## DANNY MORRISON '75

President, Carolina Panthers. Previously served as Athletic Director at TCU and Wofford, as well as Commissioner of the Southern Conference.

## WENDI NIX '96

On-air talent for ESPN, covering NFL, college football, baseball and PGA golf.

## GREG O'DELL '92

CEO of Washington Convention Center Authority. As Chief Executive of the District of Columbia Sports and Entertainment Commission, oversaw construction of the Washington Nationals Ballpark.



## COSTA M. PLEICONES '65

Associate Justice, Supreme Court of South Carolina

## JERRY RICHARDSON '59

Jerry Richardson still holds Wofford's single-game record with 241 receiving yards vs. Newberry in 1956 and is the record holder for touchdown receptions in a season (9 in 1958) and in a career (21). Richardson was an Associated Press Little All-America selection in 1957 and '58. Drafted by the defending world champion Colts, Richardson played two seasons in the NFL, earning Colt Rookie of the Year honors in 1959 and finishing third in the balloting for top NFL rookie. As a senior at Wofford, he scored 72 points on nine touchdowns, 12 extra points and two field goals. He is the founder and owner of the Carolina Panthers.



## JOE TAYLOR, JR. '80

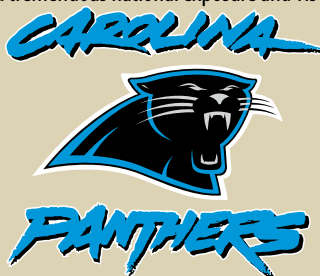
Former Secretary of Commerce, State of South Carolina

## WALT WILKINS '96

Former United State Attorney, State of South Carolina. Currently Solicitor for Thirteenth Judicial Circuit

## THE CAROLINA PANTHERS

The Carolina Panthers have held training camp at Wofford since their inaugural season in 1995. The camp provides Wofford tremendous national exposure and visibility. Media members that visit Wofford during the five-week camp include ESPN, Fox Sports Net, *USA Today* and *Sports Illustrated*. Local print and television media from markets including Columbia, Charlotte, Raleigh/Durham/Chapel Hill, Asheville and Greensboro/Winston-Salem are on campus on a daily basis.



According to SI.com's Tim Layden, "as I like to think of it: Training Camp Heaven. Wofford is 70 miles west of Charlotte on I-85, and presents all the reasons why there is something special about taking the team on the road for camp. Three pristine, Bermuda-grass fields with a stand of tall pines on two sides and a steep hillside -- where fans sit and watch -- on another. Fans, many of them young boys and girls, lined up along the fence, getting autographs after practice. It's a scene straight out of football's past."





# THE RICHARDSON BUILDING



## THE RICHARDSON BUILDING

The home of the Wofford College Athletic Department is the Richardson Physical Activities Building. The facility includes offices for the administration, football, basketball and other sports on the second floor. Also included on the second floor is an aerobic dance room and weight room with machine and free weights along with a variety of cardio machines. Locker rooms for football, men's and women's basketball, men's and women's soccer and a training room are located on the first floor.

Wofford alumnus and Carolina Panthers owner Jerry Richardson made a \$1 million donation in 2008 that was used for enhancing the Richardson Building. Numerous improvements were made in the facility to ensure that it is one of the most advanced athletic facilities in the nation.

Enhancements to the Richardson Building include new paint and carpet in the entire facility. The coaching and administration suites have been reconfigured to provide better reception areas. Football and men's basketball offices are outfitted with a new video system, including computers, editing software and large-screen monitors. This new system is similar to those being used by the NFL and NBA.

Inside the Harley Room, a new audio/video system was installed to handle the variety of events held in the room. New displays for academic honors, Southern Conference honors and the Hall of Fame are a part of the project. Additional murals and photos compliment the building and give it a fresh look.

In addition, the fitness facilities have been upgraded as well. Nearly \$100,000 worth of new equipment was added to supplement the current selection of treadmills and elliptical machines. The cardio area features six flat panel televisions for viewing while working out. The fitness area is used by the entire student body at Wofford.



*Left: The fitness facility is available for all students and has numerous cardio machines in addition to free weights and weight machines. Top: The reception area for the football office suite. Above: The football locker room.*





## STRENGTH AND CONDITIONING



### THE JOE E. TAYLOR CENTER

Wofford alumnus and South Carolina Secretary of Commerce Joe Taylor donated \$1 million for the renovation of the Curry Building into the Joe E. Taylor Athletic Center. The Taylor Center features a 7,000 square foot weight room and offices for athletic department staff. The building, located next to Gibbs Stadium, was completed in June of 2009.

The weight room facility is equipped with a total of 24 racks with built-in pull-up bars and nearly 25,000 pounds of plates, dumbbells and olympic weights. The 24 racks are divided, with twelve used with platforms and twelve used with benches. Additional equipment includes four pulldown machines, four low row machines, five power runners, six glute/ham machines, two decline ab machines, a leg press and exercise bike. Also included is a large area of Mondo track flooring, which is used with the step-up boxes, plyo boxes and hurdle sets in speed development.

The Taylor Center also provides offices for administration and numerous sports, including men's and women's soccer, baseball, men's and women's golf, volleyball, men's and women's tennis and cross country and track and field. A conference room and several work areas give the coaching staff much needed space.



### MISSION STATEMENT

The Wofford College Strength and Conditioning Department embraces the mission of both the college and athletic department. The mission of our program is to foster a positive, safe, challenging, and training environment. Our approach allows coaches, athletic trainers, and athletes to work together towards developing an athlete's full physical and mental potential.

A focal point of our training programs will be to not spend too much time training one specific aspect of development, but to train with balance. We will be hitting all areas, not neglecting another to prevent injury. Our coaches will inspire the athletes to be consistent, disciplined, and to put forth a great effort every day; never allowing their feelings to affect their performance.

### THE PHILOSOPHY

The Strength and Conditioning Program consists of a year-round training philosophy designed to improve all aspects of physical and mental development of each athlete. The training cycles consist of different phases, all of which follow sound fundamental training principle and periodization ranging from low to high intensity and high to low volume. These are all encompassing sport specific macrocycles, mesocycles, and microcycles, which will allow each athlete the best opportunity for reaching maximum genetic potential.

### GOAL

The goal is to improve the strength, speed, agility, balance, and coordination of the athletes. We will further develop proprioception, kinesthetic awareness, eye-hand and eye-foot coordination. We will be focusing on injury prevention, flexibility, and overall power of the athletes trained under the direction of the strength and conditioning department. This will enable each athlete to have the skills and tools necessary to achieve success.





# REEVES TENNIS CENTER



## **REEVES TENNIS CENTER**

The John E. Reeves Tennis Center serves as the home of the men's and women's tennis programs at Wofford College. The facility was named after the late Mr. Reeves who was a valued friend to the Wofford community. A giant in the textile industry, Reeves was superintendent of the Reeves Brothers' Mill in Woodruff, S.C. He later assumed the duties of an officer and the director of the corporation. In 1967, he was named the company's Chairman and Chief Executive Officer.

Reeves was a member of the Wofford College Board of Trustees from 1974 through 1979. He served on the finance and co-educational study committees. Under his leadership, the Reeves Foundation was established to support many charitable causes, including The Campaign for Wofford: An Investment in People.

Mr. Reeves received many honors, including an honorary doctorate of law degree from Clemson University in 1963 and the doctorate of science degree from Wofford in 1984. He was named the New York Trade's Textile Man of the Year in 1970. The Reeves Tennis Center stands in honor of the contributions to Wofford and the surrounding communities Reeves made throughout his lifetime.

The facility has 11 championship quality courts. It contains men's and women's locker rooms, as well as a lounge that enters onto a large viewing deck overlooking the courts. Located adjacent to the middle of the Wofford campus on Evins Street, the Reeves Tennis Center opened in 1992.





# COACH ROD RAY

**Head Coach • 12th Season  
East Tennessee State '87**



Rod Ray is in his 12th year as the head tennis coach at Wofford College. He also served as the Terriers' head women's coach for eight years until the 2007-08 season. Ray took over the Wofford tennis teams in 2000, three years after the transition to Division I, and took a struggling tennis program and transformed it into a reputable program that improves every year. As a coach, Ray's team has continually improved their record nearly every year.

recognition from the NCAA for being in the top ten percent in their sport with regard for outstanding academic achievement (APR). The program had earned this recognition four years in a row. In addition, the squad was also recognized by the NCAA for having outstanding sportsmanship. In 2009, they won a national award by the NCAA ITA Ethics and Infractions Committee for exemplifying outstanding sportsmanship, character, and ethical conduct in the true

history to receive All-SoCon honors all four years. Ray also coached George Kernoodle to a Southern Conference Freshman of the Year award in 2007.

Ray has led his team to Southern Conference tournament appearances eight of the past nine seasons, taking his program as far as the semi-finals in 2008.

Ray came to Wofford from the Topspin Racquet and Swim Club in Lexington, S.C., where he served as the tennis director for nearly 10 years. He has been a prominent fixture in South Carolina tennis, serving as coach for the South Carolina Junior Davis/Federation Cup Team, USTA Junior Player Development Program, Zonal Coach, and as president of the South Carolina Tennis Professional Association. In 1998, Ray was named South Carolina Tennis Association Professional of the Year. Certified by the USPTA, he has obtained a Professional 1 rating. Each summer he runs the Rod Ray Tennis Camp at Wofford, bringing in youth from across the Southeast.

Ray earned a bachelor of science degree in political science from East Tennessee State in 1987, where he played on the Buccaneer tennis team in 1984 and 1985. He and his wife, Merritt, have two sons, Cole and Ashe.

ROD RAY YEAR-BY-YEAR (W/ MEN'S)		
YEAR	OVERALL	SoCON
2000-01	3-14	2-7
2001-02	3-15	0-8
2002-03	8-9	4-5
2003-04	11-8	6-4
2004-05	6-16	5-5
2005-06	10-11	5-4
2006-07	12-8	5-4
2007-08	12-11	5-4
2008-09	13-11	7-4
2009-10	8-12	4-6
2010-11	8-13	4-6



The 2010-11 squad posted an overall record of 8-13 and 4-6 in the Southern Conference. Four members of the squad earned spots on the SoCon Spring Academic All-Conference Team, while eight earned SoCon Academic Honor Roll honors.

Coach Ray's 2009-10 team finished with an 8-12 overall record and a 4-6 standing in the Southern Conference. Ray's most successful year was in 2008-09, when he led his team to a 13-11 record and a 7-4 standing in the Southern Conference.

The 2008-09 team was the only men's team in the Southern Conference to earn special

spirit of competition.

In his 11 seasons at Wofford, Ray has led six players to All-Southern Conference recognition including: Lee Porter (2003), Kent Ball (2004), Chris Barlow (2006), Andrew Stubbs (2005-08), Alan Donald (2009), and Tinus Van Wyk (2009). One of Ray's most successful players, Andrew Stubbs, finished his career in 2008 with four straight All-Southern Conference accolades. Stubbs was the first Terrier men's player to earn league honors more than once. He joined former women's player, Ellen Rogers '06, as the only Wofford tennis players in school



# 2012 MEN'S TENNIS ROSTER

<i>NAME</i>	<i>YR.</i>	<i>HT.</i>	<i>WT.</i>	<i>HOMETOWN / HIGH SCHOOL</i>
James Daly	Fr.	6-2	165	Savannah, Ga. / Benedictine Military
Madison Daly	Fr.	6-2	165	Savannah, Ga. / Benedictine Military
Thomas Fanjoy	So.	6-1	170	Statesville, N.C. / McCallie
Elliott Farmer	Sr.	6-1	194	Lexington, Ky. / Henry Clay
Joey Francis	So.	5-11	160	Birmingham, Ala. / Mountain Brook
Rob Galloway	Fr.	6-2	160	Greenville, S.C. / Woodberry Forest
George Handy	Fr.	6-2	185	Aiken, S.C. / Aiken Prep
Walker Heffron	Fr.	6-4	168	Charleston, S.C. / Bishop England
Jackson Keith	Fr.	5-10	165	Pauline, S.C. / Dorman
Manoli Lakis	Jr.	6-0	165	Bennettsville, S.C. / Marlboro Academy
Zach Landy	So.	5-10	160	Conyers, Ga. / Heritage
Rick Newton	Fr.	6-3	200	Cypress, Texas / Cypress Woods
Stuart Robertson	Sr.	6-1	190	Auckland, New Zealand / St. Peter's School
Jack Seiffert	So.	5-10	150	Louisville, Ky. / St. Xavier
Matthew Shemanski	So.	5-11	195	Lawrenceville, Ga. / Brookwood
Drew Superstein	Jr.	5-10	155	Delray Beach, Fla. / Laurel Springs
Tinus Van Wyk	Sr.	5-10	165	Strand, South Africa / Paul Roos Gymnasium
Tom Wood	Jr.	5-9	155	Nottingham, England / Loughborough Grammar







## 2011-12 Terriers

First Row: (left to right) Zach Landy, Jack Seiffert, Joey Francis, Tinus Van Wyk, Tom Wood

Second Row: (left to right) Madison Daly, Rob Galloway, Matthew Shemanski, Jackson Keith, Drew Superstein, James Garland

Third Row: (left to right) Walker Heffron, Manoli Lakis, James Daly, Rod Ray

Fourth Row: (left to right) George Handy, Elliott Farmer, Rick Newton, Stuart Robertson

## TERRIERS BY LOCATION

### ALABAMA

BIRMINGHAM..... JOEY FRANCIS

### ENGLAND

NOTTINGHAM..... TOM WOOD

### FLORIDA

DELRAY BEACH..... DREW SUPERSTEIN

### GEORGIA

ATLANTA..... MATTHEW SHEMANSKI

CONYERS..... ZACH LANDY

SAVANNAH..... MADISON DALY

..... JAMES DALY

### KENTUCKY

LEXINGTON..... ELLIOTT FARMER

LOUSVILLE..... JACK SEIFFERT

### NEW ZEALAND

AUCKLAND.....STUART ROBERTSON

### NORTH CAROLINA

STATESVILLE..... THOMAS FANJOY

### SOUTH AFRICA

STRAND..... TINUS VAN WYK

### SOUTH CAROLINA

AIKEN..... GEORGE HANDY

BENNETTSVILLE.....MANOLI LAKIS

CHARLESTON..... WALKER HEFFRON

GREENVILLE..... ROB GALLOWAY

PAULINE..... JACKSON KEITH

### TEXAS

CYPRESS..... RICK NEWTON

## TERRIERS BY CLASS

### SENIORS (3)

ELLIOTT FARMER

STUART ROBERTSON

TINUS VAN WYK

### JUNIORS (3)

MANOLI LAKIS

DREW SUPERSTEIN

TOM WOOD

### SOPHOMORES (5)

THOMAS FANJOY

JOEY FRANCIS

ZACH LANDY

JACK SEIFFERT

MATTHEW SHEMANSKI

### FRESHMEN (7)

MADISON DALY

JAMES DALY

ROB GALLOWAY

GEORGE HANDY

WALKER HEFFRON

JACKSON KEITH

RICK NEWTON





# THOMAS FANJOY

6-1 • 170 • Sophomore  
Statesville, North Carolina  
McCallie High School

**2010-11:** Did not compete.

**2009-10:** Attended the College of Charleston.

**HIGH SCHOOL:** Played under Coach Mike Williams at Statesville High School in North Carolina his freshman and sophomore years in high school, and under Coach Eric Voges at McCallie High School in Tennessee his junior and senior years ... Led teams to three state championship titles for three consecutive years, 2007-2009 ... Placed second in the team state championships with Statesville his freshman year ... Finalist in the state championships in doubles ... Two-time region champion in doubles ... Crowned singles state champion three separate years ... Two-time doubles champion in junior tennis ... Finished the 2005 and 2007 seasons as the No. 1 ranked tennis player in North Carolina ... Recorded as high as the No. 10 ranked player in the Southern section ... Selected on the All-State and All-Conference teams in 2006, 2007 and 2009 ... Only lost three matches in his entire high school tennis career ... Undefeated seasons in 2007 and 2008 ... Tallied a 55-1 overall team record for the two high schools he played for ... Given the Gold and Silver Renaissance academic award and picked to the Honor Roll ... Involved with high school newspaper and volunteered with homeless shelters and food banks.

**PERSONAL:** Born April 4, 1991 in Statesville, North Carolina ... Son of Will and Susan Fanjoy ... Has two sisters who played college tennis, Meg Fanjoy at North Carolina and Laura Fanjoy at Sewanee ... Intends to major in English.





# ELLIOTT FARMER

**6-1 • 194 • Senior**  
**Lexington, Kentucky**  
**Henry Clay High School**



**2010-11:** Did not see any action.

**2009-10:** Paired with Tom Wood for one doubles start against South Carolina.

**2008-09:** Competed in the Wofford Fall Challenge and USC Upstate Invitational in the fall tournament season ... Played two matches in the spring, posting wins over Mount Olive and UNC Asheville in doubles at the No. 3 position with Scott Collins.

**HIGH SCHOOL:** Held a United States Tennis Association (USTA) combined ranking of No. 4 in Kentucky and No. 71 in the South ... Rated as a three-star recruit by [www.tennisrecruiting.net](http://www.tennisrecruiting.net) ... A two-time state doubles finalist during his junior and senior campaigns ... He and his doubles partner were the top seed in the state as seniors ... Became the first male player from his high school to reach the state finals since 1984 ... Among the top-16 seeds for the state tournament in singles action during his sophomore year ... Represented the Southern Section at the 2002 and 2006 USTA National Zonals (12s and 16s) ... Represented Kentucky at the 2003 and 2004 USTA Southern Zonal Team (14s) ... Represented Kentucky at the 2004, 2005, 2006 US Junior Davis Cup (now Southern Team Championship) ... Participated in the 2004 Super National Championship in San Antonio, Texas ... Four-time member of the All-Conference and Regional team and All-State (Kentucky) team in 2007 and 2008 ... Named Most Valuable Player for Henry Clay High School for four consecutive years ... Four year qualifier for the state playoff tournament.

**PERSONAL:** Born February 1, 1990, in Lexington, Kentucky ... Son of Lambert and Deloris Farmer ... Majoring in finance with a minor in accounting.





# JOEY FRANCIS

5-11 • 160 • Sophomore  
Birmingham, Alabama  
Mountain Brook High School

**2010-11:** Did not see any action ... Winner of the 2011 Intercollegiate Tennis Association (ITA) and the United States Tennis Writers' Association (USTWA) Writing Competition ... Named to the Southern Conference Academic Honor Roll.

**HIGH SCHOOL:** Played under Coach Susan Farlow at Mountain Brook High School ... Led team to three Alabama state championship titles in 2008, 2009 and 2010 ... Placed second in state championships his freshman year in 2007 ... Honored as the 2010 Kiwanis Club Metro Birmingham Player of the Year ... Placed second in the singles state championships as a senior ... Selected as captain his junior and senior years ... Started at the No. 1 spot his junior and senior years ... State champion in doubles at the No. 2 spot ... Picked to the *Birmingham News* All-Academic Team ... Achieved a championship in sectionals, where he was ranked the No. 1 singles player and the No. 2 doubles player ... Involved in the National Honor Society, Mu Alpha Theta (Match Honor Society), Spanish Club, Stand Up Club, LETT Tennis and Jessie's Place.

**PERSONAL:** Born April 21, 1992 in Birmingham, Alabama ... Son of Tom and Patty Francis ... Anticipated major is biology.





# **MANOLI LAKIS**

**6-0 • 165 • Junior  
Bennettsville, South Carolina  
Marlboro Academy**



**2010-11:** Did not see any playing time.

**2009-10:** Started at the No. 6 spot in singles against Chattanooga, defeating his opponent in straight sets ... Paired up with Drew Superstein to compete in doubles at the No. 3 position ... Named to the Southern Conference Honor Roll.

**HIGH SCHOOL:** Earned seven varsity letters in tennis at Marlboro Academy ... Named All-State in 2008 and 2009 ... Team won the state championship in 2008 and was runner-up in 2006, 2007 and 2009 ... Team MVP in singles for four years and also team MVP in doubles for two years ... In basketball, was a three-year letterman ... Named All-Conference in 2008 and All-State in 2008 and 2009 ... Earned team MVP honors in 2008 ... Also earned two letters in soccer ... Named a Wofford Scholar.

**PERSONAL:** Born in Rethymno, Crete, Greece ... Son of Stanley and Dina Lakis ... Majoring in biology with a business minor.



# ZACH LANDY

5-10 • 160 • *Sophomore*  
*Conyers, Georgia*  
*Heritage High School*



**2010-11:** Did not see any action.

**HIGH SCHOOL:** Four year varsity letterman under Coach Charles Landy at Heritage High School ... Led team to four region championships ... Helped team to third and fourth place finishes in the Georgia state championships in 2007 and 2009... Made appearances in the Elite Eight two of his four years at Heritage High School ... Recorded a 22-2 record with his team in 2007 ... selected to the All-Region team in 2008, 2009 and 2010 ... Three year letterman in cross country ... Helped team to a region championship and Elite Eight finish in cross country in 2009 ... Selected to the All-Area team for cross country in 2009 ... Honored as a Board Scholar for three years at Heritage High and was involved in the National Honor Society.

**PERSONAL:** Born May 29, 1991 in Valdosta, Georgia ... Son of Charles and Susan Landy ... Father, Charles Landy, played football at Slippery Rock University ... Anticipated major is physics.





## STUART ROBERTSON

6-1 • 190 • Senior  
Auckland, New Zealand  
St. Peter's School



**2010-11:** Went 8-12 overall in singles action, picking up four wins in conference play ... Saw time at the No. 2 and No. 3 positions ... Notable wins came against King College, Presbyterian College, Charlotte, Gardner-Webb, The Citadel, Furman, Chattanooga, and Appalachian State ... Played No. 1 doubles the entire season ... Teamed with Tinus Van Wyk for the majority of the season ... Finished the season with a 9-12 doubles record, with five wins in conference play ... Key wins came over duos from Presbyterian College, Charlotte, The Citadel, Army, Georgia Southern, Furman, Chattanooga, and Samford ... Named to the Southern Conference Academic All-Conference Team and Academic Honor Roll.

**2009-10:** Finished the season with a 6-13 record, with two wins in the conference ... Played every match at the No. 2 spot ... Grabbed a personal best three win streak after the Brevard match (02/10) ... Picked up notable wins against Brevard, Coastal Carolina, Gardner-Webb, Charlotte, Appalachian State, and Chattanooga ... Paired with Tom Wood for majority of the year at every doubles spot, with their most success coming from the No. 2 position ... Defeated the doubles team from the No. 43 nationally ranked Georgia Tech to begin the season ... Played the last three matches with Paul Bartholomy ... Finished the season with a 5-12 doubles record, with two wins in the conference ... Awarded the Southern Conference Commissioner's Medal ... Named to the Southern Conference All-Academic team and Honor Roll.

**2008-09:** Tallied five singles wins in the spring playing mostly the No. 1 singles position as a freshman ... Picked up wins over Presbyterian and Mount Olive at the No. 3 position and a win over Charlotte at the No. 2 position ... Won two matches at the No. 1 spot over UNC Asheville and Lipscomb ... Teamed with Danny Manlow to compile 13 wins in doubles at the No. 1 position, second most on the team ... Had a season high winning streak of four from February 27 to March 8 picking up wins over Cornell, UNC Asheville, Lipscomb and Gardner-Webb ... Won five matches in a tiebreaker ... Had a 6-4 record in the league gaining wins over College of Charleston, Georgia Southern, The Citadel, Davidson and Samford ... Final SoCon win came over the 54th nationally ranked team of Andy Juc and Bo Ladyman of #66 ranked Furman.

**HIGH SCHOOL:** Ranked as high as No. 486 in the combined ITF (International Tennis Federation) junior world rankings ... Won the team national championships at St. Peter's School playing the No. 6 spot in 2004 ... Went undefeated during 2007-08 academic year to lead team to national championship playing the No. 1 spot ... Served as the team captain for the national championship squad ... Reached the finals of the Auckland 18 and under ITF summer Championship ... Was a semifinalist in the New Zealand 18 and under National Indoor Championship ... Placed in the semifinals of the 2007 Oceania Closed Junior Championships in Fiji during doubles action ... Also participated in soccer during the 2007-08 season.

**PERSONAL:** Born February 26, 1991, in London, England ... Son of Graham and Gillian Robertson ... Double majoring in math and finance.





# JACK SEIFFERT

5-10 • 150 • *Sophomore*  
*Louisville, Kentucky*  
*St. Xavier High School*

**2010-11:** Compiled a 5-13 overall record in doubles action, with all matches taking place at the No. 3 position ... Teamed with Drew Superstein, Randall Heffron, and Michael Schecter ... Key wins came against King College, The Citadel, Georgia Southern, Chattanooga, and Appalachian State ... Named to the Southern Conference Academic Honor Roll.



**HIGH SCHOOL:** Three-year varsity letterman under Coach Kerry Lancaster at St. Xavier ... Led team to two state championship titles his junior and senior years, 2009 and 2010 ... Crowned regional champs junior and senior years, 2009 and 2010 ... Finished second in region and fourth in Kentucky state championships in 2008 ... Garnered regional and state championship titles in 2007 with the junior varsity squad ... Helped team to three undefeated seasons in 2007, 2008 and 2010 ... Won all but two matches played in during senior year ... Distinguished as Academic All-State Honorable Mention in 2009 ... Involved in the History Club and tutored at the West End School in Louisville, Ky.

**PERSONAL:** Born March 3, 1992 in Louisville, Kentucky ... Son of Jim and Margaret Seiffert ... Has family members involved in college athletics; Trey Kramer played soccer for Transylvania University (2006-2010) and Claire Seiffert is currently a gymnast at Auburn University ... Has yet to declare a major.





# MATTHEW SHEMANSKI

5-11 • 195 • Sophomore  
Lawrenceville, Georgia  
Brookwood High School

**2010-11:** Did not see any action.

**HIGH SCHOOL:** Played under Coach Heath Hinton for four years at Brookwood High School ... Achieved third place in the Georgia team state championships his junior and senior years, 2009 and 2010 ... Helped team to an overall 69-7 record throughout his four years with the Broncos ... Crowned region champions every year of his high school tennis career, 2007-2010 ... Selected to the All-Region team ... Played tight end, wide receiver and kicker for two years under Coach Heath Hinton, taking the district championship title both years in 2006 and 2007 ... Earned Scholar Athlete accolades every year in high school ... Involved in the National Honor Society, Junior Classical League and Key Club.

**PERSONAL:** Born September 18, 1991 in Reading, Pennsylvania ... Son of Vinnie and Susan Shemanski ... Anticipated major is business economics.



# DREW SUPERSTEIN

5-10 • 155 • Junior  
 Delray Beach, Florida  
 Laurel Springs School



**2010-11:** Compiled an overall record of 9-11 in singles play, including a team-best six wins in conference play ... Competed the majority of the season at the No. 5 position ... Key wins came against Charlotte, USC Upstate, UNC Greensboro, The Citadel, Georgia Southern, Davidson, Furman, and Chattanooga ... Went 1-9 overall in doubles action, all taking place at the No. 3 spot ... Win came with Jack Seiffert against King College ... Named to the Southern Conference Academic All-Conference Team and Academic Honor Roll.

**2009-10:** Finished the season with a 6-6 singles record ... Tied for second on the team for most singles wins (6) ... Played at the No. 4, 5, and 6 spots throughout the season ... Went undefeated in Southern Conference play with a 3-0 singles record, defeating opposition from Georgia Southern, Appalachian State and Samford ... Played each SoCon match at the No. 6 position ... Picked up five doubles wins, with two wins in SoCon play ... Paired up with four different partners during the season, including Tinus Van Wyk, Paul Bartholomy, Manoli Lakis, and Tom Wood ... Awarded the Southern Conference Commissioner's Medal ... Selected to the Southern Conference Honor Roll.

**HIGH SCHOOL:** Was a four star recruit according to [www.tennisrecruiting.net](http://www.tennisrecruiting.net) coming out of high school ... Joined the Terriers after spending one semester at Purdue University ... During his junior tennis career, Superstein was ranked in the top 100 in the nation in boy's 16's ... He defeated four players ranked in the top 300 in the ITF Juniors (International Tennis Federation) while playing in multiple ITF tournaments ... Trained at the IMG group while playing with many of the top players at the Nick Bollettieri Tennis Academy in Bradenton, Florida ... Off the court he was a member of the National Honor Society and a volunteer during the Hurricane Wilma relief efforts.

**PERSONAL:** Born August 14, 1991, in Miami, Florida ... Son of Rick and Esther Superstein ... Majoring in biology/pre-Med.





## TINUS VAN WYK

5-10 • 165 • Senior  
Strand, South Africa  
Paul Roos Gymnasium



**2010-11:** Went 5-13 overall in singles action, including two wins in conference play ... Played the entire season at the No. 1 position ... Key victories came against King College, Presbyterian College, Army, Samford, and Appalachian State ... Posted a record of 9-10 in doubles play with partner Stuart Robertson, including five wins in conference action ... All action took place at the No. 1 position ... Nine wins were team-best for the season ... Key wins came against duos from Presbyterian College, Charlotte, The Citadel, Army, Georgia Southern, Furman, Chattanooga, and Samford.

**2009-10:** Finished the year with a 5-15 singles record, with a 3-7 standing in the Southern Conference ... Played every singles match at the No. 1 spot ... Picked up notable wins against Brevard, Charlotte, Georgia Southern, Appalachian State, and The Citadel ... Picked up five doubles wins with three different partners, including: Drew Superstein, Alan Donald and Paul Bartholomy ... Played at all three doubles spots throughout the season ... Selected to the Southern Conference Honor Roll.

**2008-09:** Led the team in victories with a 14-7 overall record and 8-2 mark in the Southern Conference, tying the team high in conference wins with Alan Donald, playing majority of the time at the No. 4 spot ... Was named All-Conference second team and was named to the Southern Conference All-Freshman team ... Posted non-conference wins over #52 South Carolina, Florida Atlantic, Coastal Carolina, Presbyterian College, Mount Olive and Charlotte ... Earned league wins over Davidson, Georgia Southern, Appalachian State, UNC Greensboro, Chattanooga and The Citadel ... Won the deciding point in a 4-3 win over College of Charleston on March 20 ... Defeated Daniel Knause of #69 Furman to end the season ... Had a team long win streak of eight matches from March 20 to April 15 ... Finished the season winning eight of his last ten singles matches ... Won 12 doubles matches with majority coming at the No. 3 spot with Scott Collins ... Posted a 7-3 record in the SoCon with wins over College of Charleston, Georgia Southern, UNC Greensboro, Chattanooga, Davidson, Samford and The Citadel ... Won four straight conference matches including clinching the doubles point over UNC Greensboro and Chattanooga.

**HIGH SCHOOL:** Earned full honors for tennis ... Played under Coach Christiann Klopfer at Paul Roos Gymnasium in Sellenbosch, South Africa ... Led his team from the No. 2 position to the national championships in 2008.

**PERSONAL:** Born April 2, 1991, in Cape Town, South Africa ... Son of Bram and Estelle Van Wyk ... Majoring in economics.



# TOM WOOD



5-9 • 155 • Junior  
Nottingham, England  
Loughborough Grammar

**2010-11:** Posted an overall record of 6-6 in singles action, including one win in conference play ... Played all matches at the No. 6 position ... Key victories came against opponents from King College, Charlotte, USC Upstate, Gardner-Webb, The Citadel, and Army ... Named to the Southern Conference Academic Honor Roll.



**2009-10:** Finished the year with a 4-6 overall singles record ... Recorded a 4-4 standing in Southern Conference singles play ... Played majority of the season at the No. 6 position, but also played a couple of matches at the No. 5 position ... Had notable wins over UNC Greensboro, Chattanooga, Furman, and The Citadel ... Picked up five wins in doubles ... Paired with three different partners on the year, including Elliott Farmer, Stuart Robertson and Drew Superstein ... Started at all three spots in doubles play ... Grabbed two conference doubles wins, both at the No. 3 position.

**HIGH SCHOOL:** Played the number one singles position from 2006-2009 ... Led his team to a national school championship and two region championships ... Was named to the All-Conference first team and served as team captain for three seasons ... Was a member of the National Junior Club League Championship team and currently holds an ITF ranking ... A member of various clubs and organizations off the court.

**PERSONAL:** Born on October 13, 1990, in Nottingham, England ... Son of Gary and Julie Wood ... Majoring in finance.





# JAMES DALY

6-2 • 165 • Freshman  
Savannah, Georgia  
Benedictine Military School

**HIGH SCHOOL:** Played under Coach Ken Cooper at Benedictine Military School ... Led team to two regional championships in 2010 and 2011 ... Went 19-1 overall in 2010 and 20-1 overall in 2011 in singles action ... Awarded the Excellence in Algebra II Award ... Also part of the Junior ROTC and RTPLO Lacrosse Tournament.

**PERSONAL:** Born December 11, 1992 in Los Angeles, California ... Son of James and Lake Daly ... Twin brother Madison also plays tennis for the Terriers ... Intends to major in pre-Med.



# MADISON DALY

6-2 • 165 • Freshman  
Savannah, Georgia  
Benedictine Military School

**HIGH SCHOOL:** Played under Coach Ken Cooper at Benedictine Military School ... Led team to two regional championships in 2010 and 2011 ... Played at the No. 2 position both seasons ... Went 19-1 overall in 2010 and 20-1 overall in 2011 in singles play ... Earned Cadet of the Month honors from Benedictine ... Amassed 70 volunteer hours with various organizations.

**PERSONAL:** Born December 11, 1992 in Los Angeles, California ... Son of James and Lake Daly ... Twin brother James also plays tennis for the Terriers ... Intends to major in Biology.





# ROB GALLOWAY

6-2 • 160 • Freshman  
Greenville, South Carolina  
Woodberry Forest High School

**HIGH SCHOOL:** Played under Coach Randy Hudgins at Woodberry Forest School ... Led squad to first-place finish in the Virginia Prep League in 2007 and two consecutive second-place finishes in 2009 and 2010 ... Has spent time at the No. 1, No. 2, and No. 4 singles positions throughout his career ... Received All-Prep honors each season ... Also played squash and football at Woodberry Forest ... Received academic honors each year of high school ... Earned 62 hours of community service with various organizations and was co-editor-in-chief of the school's yearbook .

**PERSONAL:** Born September 24, 1992 in Columbia, South Carolina ... Son of Robert Galloway and Margaret Hungerford ... Grandfather, Robert, and father, Robert, both played tennis at William and Mary ... Has yet to declare a major.



# GEORGE HANDY

6-2 • 185 • Freshman  
Aiken, South Carolina  
Aiken Prep School

**HIGH SCHOOL:** Played under Coach Lynn Carter at Aiken Prep School ... Led squad to South Carolina Single A State Championship ... Team also claimed regional title ... Went a combined 16-0 in singles and doubles play his senior season ... Named to the All-Region and All-State Teams ... Named Team MVP at Aiken Prep, as well as receiving the Coach's Award and Sportsmanship Award ... Ranked as high as 60th in the southern region by the USTA ... Earned rankings of sixth for 14s and seventh for 16s and 18s in South Carolina ... Also played golf at Aiken Prep, winning the regional tournament championship by three strokes ... Honor roll student ... Volunteered with a blood drive at school, as well as teaching tennis to younger children.

**PERSONAL:** Born January 21, 1993 in Augusta, Georgia ... Son of George and Lisa Handy ... Has yet to declare a major.





# **WALKER HEFFRON**

**6-4 • 168 • Freshman  
Charleston, South Carolina  
Bishop England High School**



**HIGH SCHOOL:** Played under Coach Allen Moore at Bishop England High School ... Led team to four consecutive region championships from 2008-2011 ... Amassed a career record of 71-5, with experience at No. 1 and No. 2 singles, as well as No. 1 doubles ... All-Low Country Team selection all four years ... 2011 National High School Tennis All-American selection ... 2011 Low Country Player of the Year ... 2011 South Carolina High School A/AA Singles Champion ... Team captain his senior year ... Also played basketball at Bishop England, where he was team captain his senior season ... Recipient of various academic awards throughout high school ... Ranked in top-10 in Boys 18's in South Carolina by the USTA, with a Southern ranking as high as 16 ... Member of the National Honor Society and Key Club ... Named a Wofford Scholar and Wofford Old Main Scholar ... Volunteered with the Family Circle Cup, Habitat for Humanity and Summit Place Nursing Home.

**PERSONAL:** Born August 15, 1992 in Charleston, South Carolina ... Son of Robin W. Heffron and the late Dr. Randall G. Heffron ... Father, Randy, played tennis for The Citadel from 1965-1969 ... Late brother, Randall, was a member of the Wofford tennis team during the 2010-11 season ... Plans to major in pre-professional studies and engineering.

# **JACKSON KEITH**

**5-10 • 165 • Freshman  
Pauline, South Carolina  
Dorman High School**



**HIGH SCHOOL:** Played under Coach Sam Napier at Dorman High School ... Two-time all-state and four-time all-region selection ... Set Dorman record with 72 career wins ... Has experience at the No. 1, No. 2, and No. 3 positions ... Member of the National Honor Society and Beta Club ... Involved with Young Life and went on mission trips to the Dominican Republic and China.

**PERSONAL:** Born October 1, 1992 in Spartanburg, South Carolina ... Son of Karen and John Keith, Sr. ... Has yet to declare a major.





# RICK NEWTON

6-3 • 200 • Freshman  
Cypress, Texas  
Cypress Woods High School

**HIGH SCHOOL:** Played under Coach Tim Calhoun at Cypress Woods High School ... Member of the varsity program all four years ... Three-time member of the All-District team ... Led team to the district championship in 2009 ... Member of the Junior ROTC and Model United Nations ... Recipient of the Model U.N. Best Delegate Award ... Member of the Key Club, putting in over 400 hours of volunteer service.

**PERSONAL:** Born July 19, 1993 in Denton, Texas ... Son of Odette and Billy Newton ... Intends to major in business economics.

## MEN'S TENNIS SUPPORT STAFF



**JAMES GARLAND**

MANAGER



**PEG McDOWELL**

ATHLETIC TRAINING



**ERIC TOOKER**

STRENGTH & CONDITIONING



**RYAN BRIDGES**

ATHLETIC MEDIA RELATIONS





# 2011 SEASON RESULTS

## Wofford Tennis

### Wofford Season Results (Through matches of April 20, 2011)

Overall record: 8-13 • SoCon: 4-6 • Region: 0-1 • Home: 5-4 • Away: 3-7 • Neutral: 0-2  
 • vs National ranked: 0-0 • vs Regional ranked: 0-0

Date	Opponent	Score	Overall	SoCon	Nation	Region
Jan 15, 2011	at Clemson	L 0-7	0-1	0-0		
% Jan 16, 2011	at #56 South Carolina	L 1-6	0-2	0-0		
Jan 29, 2011	WINTHROP	L 0-7	0-3	0-0		
Feb 09, 2011	KING COLLEGE	W 7-0	1-3	0-0		
Feb 13, 2011	at Coastal Carolina	L 1-6	1-4	0-0		
Feb 17, 2011	at Presbyterian College	W 4-3	2-4	0-0		
Feb 21, 2011	UNC CHARLOTTE	W 5-2	3-4	0-0		
Feb 23, 2011	at USC Upstate	L 2-5	3-5	0-0		
Mar 01, 2011	GARDNER-WEBB	W 4-3	4-5	0-0		
* Mar 05, 2011	at UNCG	L 1-6	4-6	0-1		
* Mar 12, 2011	at The Citadel	W 6-1	5-6	1-1		
Mar 15, 2011	vs Army	L 3-4	5-7	1-1		
* Mar 19, 2011	at Georgia Southern	W 4-3	6-7	2-1		
* Mar 26, 2011	at College of Charleston	L 0-7	6-8	2-2		
* Mar 29, 2011	DAVIDSON	W 4-3	7-8	3-2		
* Apr 05, 2011	FURMAN	L 3-4	7-9	3-3		
* Apr 09, 2011	at Elon	L 0-7	7-10	3-4		
* Apr 10, 2011	CHATTANOOGA	W 6-1	8-10	4-4		
* Apr 15, 2011	SAMFORD	L 3-4	8-11	4-5		
* Apr 16, 2011	APPALACHIAN STATE UNIVERSITY	L 2-5	8-12	4-6		
Apr 20, 2011	vs Davidson College	L 1-4	8-13	4-6		

SINGLES	Overall	Dual	Tour	SoCon							vs ranked		Last	
					1	2	3	4	5	6	Nat'l	Reg'l	Strk	10
Paul Bartholomy	2-9	2-9	0-0	2-5	---	---	---	0-2	0-1	2-6	0-0	0-0	L3	2-8
Alan Donald	10-11	10-11	0-0	4-6	---	---	1-1	9-10	---	---	0-0	0-0	L3	3-7
Stuart Robertson	8-12	8-12	0-0	4-6	---	0-2	8-10	---	---	---	0-0	0-0	W1	3-6
Michael Schechter	9-12	9-12	0-0	5-5	0-2	9-10	---	---	---	---	0-0	0-0	W1	5-5
Drew Superstein	9-11	9-11	0-0	6-4	---	---	---	9-10	0-1	0-0	0-0	0-0	L2	4-5
Tinus Van Wyk	5-14	5-14	0-0	2-8	5-14	---	---	---	---	---	0-0	0-0	L1	3-7
Tom Wood	6-6	6-6	0-0	1-2	---	---	---	---	---	6-6	0-0	0-0	L1	6-4
Totals	49-75	49-75	0-0	24-36	5-16	9-12	9-11	9-12	9-11	8-13	0-0	0-0		
Percentage	.395	.395	.000	.400	.238	.429	.450	.429	.450	.381	.000	.000		

DOUBLES	Overall	Dual	Tour	SoCon							vs ranked		Last	
					1	2	3	Nat'l	Reg'l	Strk	10			
Alan Donald/Stuart Robertson	0-2	0-2	0-0	0-0	0-2	---	---	0-0	0-0	0-0	0-0	L2	0-2	
Paul Bartholomy/Michael Schechter	1-1	1-1	0-0	0-0	---	1-1	---	0-0	0-0	0-0	0-0	W1	1-1	
Randall Heffron/Drew Superstein	0-3	0-3	0-0	0-0	---	---	0-3	0-0	0-0	0-0	0-0	L3	0-3	
Stuart Robertson/Tinus Van Wyk	9-10	9-10	0-0	5-5	9-10	---	---	0-1	0-0	0-0	L2	5-5		
Paul Bartholomy/Alan Donald	7-3	7-3	0-0	5-3	---	7-3	---	0-0	0-0	L1	7-3			
Alan Donald/Michael Schechter	4-4	4-4	0-0	1-1	---	4-4	---	0-0	0-0	W1	4-4			
Jack Seiffert/Drew Superstein	1-5	1-5	0-0	0-0	---	---	1-5	0-0	0-0	L5	1-5			
Randall Heffron/Jack Seiffert	1-1	1-1	0-0	1-1	---	---	1-1	0-0	0-0	W1	1-1			
Michael Schechter/Jack Seiffert	3-7	3-7	0-0	3-5	---	---	3-7	0-0	0-0	L1	3-7			
Totals	26-36	26-36	0-0	15-15	9-12	12-8	5-16	0-1	0-0					
Percentage	.419	.419	.000	.500	.429	.600	.238	.000	.000					



# 2011 MATCH BY MATCH

Wofford Team Match-by-Match (Through matches of April 20, 2011)

Date	Opponent	Score	Singles						Doubles		
			1	2	3	4	5	6	1	2	3
Jan 15, 2011	at Clemson	L 0-7	L	L	L	L	L	L	L	L	L
% Jan 16, 2011	at #56 South Carolina	L 1-6	L	L	W	L	L	L	L	L	W
Jan 29, 2011	WINTHROP	L 0-7	L	L	L	L	L	L	L	L	W
Feb 09, 2011	KING COLLEGE	W 7-0	W	W	W	W	W	W	W	W	W
Feb 13, 2011	at Coastal Carolina	L 1-6	L	L	L	W	L	L	L	L	L
Feb 17, 2011	at Presbyterian College	W 4-3	W	L	W	W	L	L	L	W	W
Feb 21, 2011	UNC CHARLOTTE	W 5-2	L	W	W	W	W	W	W	W	L
Feb 23, 2011	at USC Upstate	L 2-5	L	L	L	L	W	W	L	L	L
Mar 01, 2011	GARDNER-WEBB	W 4-3	L	W	W	W	L	W	L	W	L
* Mar 05, 2011	at UNCG	L 1-6	L	L	L	L	W	L	L	L	L
* Mar 12, 2011	at The Citadel	W 6-1	L	W	W	W	W	W	W	W	W
Mar 15, 2011	vs Army	L 3-4	W	L	L	L	L	W	W	W	L
* Mar 19, 2011	at Georgia Southern	W 4-3	L	W	L	W	W	L	W	L	W
* Mar 26, 2011	at College of Charleston	L 0-7	L	L	L	L	L	L	L	L	L
* Mar 29, 2011	DAVIDSON	W 4-3	L	W	L	W	W	W	L	W	L
* Apr 05, 2011	FURMAN	L 3-4	L	L	W	L	W	L	W	W	L
* Apr 09, 2011	at Elon	L 0-7	L	L	L	L	L	L	L	L	W
* Apr 10, 2011	CHATTANOOGA	W 6-1	L	W	W	W	W	W	W	W	W
* Apr 15, 2011	SAMFORD	L 3-4	W	W	L	L	L	L	W	W	L
* Apr 16, 2011	APPALACHIAN STATE UNIVERSITY	L 2-5	W	L	W	L	L	L	L	L	W
Apr 20, 2011	vs Davidson College	L 1-4	L	W	u	L	u	L	L	u	L





# 2011 SoCon RECAP

Wofford Tennis

Wofford Season Results (Through matches of April 20, 2011)  
Conference-only matches

Overall record: 4-6 • SoCon: 4-6 • Region: 0-0 • Home: 2-3 • Away: 2-3 • Neutral: 0-0  
• vs National ranked: 0-0 • vs Regional ranked: 0-0

Date	Opponent	Score	Overall	SoCon	Nation	Region
* Mar 05, 2011	at UNCG	L 1-6	0-1	0-1		
* Mar 12, 2011	at The Citadel	W 6-1	1-1	1-1		
* Mar 19, 2011	at Georgia Southern	W 4-3	2-1	2-1		
* Mar 26, 2011	at College of Charleston	L 0-7	2-2	2-2		
* Mar 29, 2011	DAVIDSON	W 4-3	3-2	3-2		
* Apr 05, 2011	FURMAN	L 3-4	3-3	3-3		
* Apr 09, 2011	at Elon	L 0-7	3-4	3-4		
* Apr 10, 2011	CHATTANOOGA	W 6-1	4-4	4-4		
* Apr 15, 2011	SAMFORD	L 3-4	4-5	4-5		
* Apr 16, 2011	APPALACHIAN STATE UNIVERSITY	L 2-5	4-6	4-6		

Date	Opponent	Score	Singles						Doubles				
			1	2	3	4	5	6	1	2	3		
* Mar 05, 2011	at UNCG	L 1-6	L	L	L	L	W	L	L	L	L	L	L
* Mar 12, 2011	at The Citadel	W 6-1	L	W	W	W	W	W	W	W	W	W	W
* Mar 19, 2011	at Georgia Southern	W 4-3	L	W	L	W	W	L	W	L	W	L	W
* Mar 26, 2011	at College of Charleston	L 0-7	L	L	L	L	L	L	L	L	L	L	L
* Mar 29, 2011	DAVIDSON	W 4-3	L	W	L	W	W	W	L	W	L	W	L
* Apr 05, 2011	FURMAN	L 3-4	L	L	W	L	W	L	W	W	L	W	L
* Apr 09, 2011	at Elon	L 0-7	L	L	L	L	L	L	L	L	L	L	L
* Apr 10, 2011	CHATTANOOGA	W 6-1	L	W	W	W	W	W	W	W	W	W	W
* Apr 15, 2011	SAMFORD	L 3-4	W	W	L	L	L	L	W	W	L	W	L
* Apr 16, 2011	APPALACHIAN STATE UNIVERSITY	L 2-5	W	L	W	L	L	L	L	L	L	L	W

## OVERALL SoCon RESULTS

Team	Record	Pct	Home	Away	Record	Pct	Home	Away	Neutral
C of C	9-1	.900	5-0	4-1	17-6	.739	8-1	6-4	3-1
Elon	9-1	.900	5-0	4-1	18-7	.720	11-3	6-3	1-1
UNCG	8-2	.800	5-0	3-2	15-6	.714	9-1	6-4	0-1
App State	7-3	.700	4-1	3-2	15-7	.682	7-1	7-5	1-1
Samford	6-4	.600	2-3	4-1	19-7	.731	10-4	6-3	3-0
Furman	5-5	.500	3-2	2-3	9-18	.333	4-7	2-8	3-3
Wofford	4-6	.400	2-3	2-3	8-13	.382	5-4	3-7	0-2
Ga. Southern	3-7	.300	2-3	1-4	11-12	.478	7-4	4-7	0-1
Chattanooga	2-8	.200	1-4	1-4	8-16	.333	6-7	1-7	1-2
Davidson	2-8	.200	1-4	1-4	7-18	.280	5-6	1-10	1-2
Citadel	0-10	.000	0-5	0-5	3-21	.125	1-9	2-9	0-3



## A HISTORY OF WOFFORD COLLEGE TENNIS

**Historical Notes:** Tennis arose on the Wofford College campus in the fall of 1889. The club consisted of 16 members which included a President, Treasurer, Manager, 3 instructors, and a "keeper of the keys." The object of this club was to introduce and perpetuate tennis at Wofford. Quickly, the club became more of a school-wide organization consisting of members of the faculty as well as students. Wofford's first recorded tennis match, held on March 19, 1890, was a 3-1 win over Tryon. By 1920, Wofford Tennis became a team sport. There was no tennis team from 1942-43 to 1945-46 due to World War II.

# MEN'S TENNIS YEAR-BY-YEAR RECORDS

<u>Year</u>	<u>Coach</u>	<u>Record</u>	<u>Year</u>	<u>Coach</u>	<u>Record</u>
1891-1925	Unknown	Unknown	1969-70	Jack Peterson	11-8
1925-26	William Child	Unknown	1970-71	Mike Bugar	2-10
1926-27	F.H. Shuler	Unknown	1971-72	Mike Bugar	6-7
1927-28	F.H. Shuler	Unknown	1972-73	Mike Bugar	Unknown
1928-29	Henry McCormack	Unknown	1973-74	Mike Bugar	9-2
1929-30	R.W. Stokes	Unknown	1974-75	Mike Bugar	8-2
1930-31	Unknown	Unknown	1975-76	Mike Bugar & Jim Newcome	3-13
1931-32	Frank F. Limehouse	Unknown	1976-77	Jim Newcome	7-6
1932-33	Unknown	Unknown	1977-78	Jim Newcome	Unknown
1933-34	Kenneth D. Coates	Unknown	1978-79	Ed Harris	Unknown
1934-35	Kenneth D. Coates	Unknown	1979-80	Ed Harris	2-9 (Incomplete)
1935-36	Kenneth D. Coates	8-6	1980-81	Charlie McGinty	10-3
1936-37	Kenneth D. Coates	10-6	1981-82	Charlie McGinty	5-9
1937-38	Albert Stanbury	8-12	1982-83	Charlie McGinty	12-2
1938-39	J.E. Ford	2-3 (Incomplete)	1983-84	Declan O'Donoghue	1-6
1939-40	Unknown	7-8 (Incomplete)	1984-85	Declan O'Donoghue	7-7
1940-41	Unknown	7-14	1985-86	Ben Varn	9-7
1941-42	Unknown	Unknown	1986-87	Ben Varn	8-10
1942-46	N/A	N/A	1987-88	Ben Varn	13-8
1946-47	Jack Cannon	4-5	1988-89	Ben Varn	12-6
1947-48	Jack Cannon	Unknown	1989-90	Ben Varn	12-8
1948-49	Jack Cannon	Unknown	1990-91	Ben Varn	16-9
1949-50	Col. Howard D. Balluet	6-8	1991-92	Ben Varn	13-8
1950-51	Col. Howard D. Balluet	6-10	1992-93	Ben Varn	8-8
1951-52	A.M. Chreitzberg	6-9	1993-94	Ben Varn	17-5
1952-53	A.M. Chreitzberg	2-1 (Incomplete)	1994-95	Ben Varn	14-5
1953-54	"Red" Coleman	3-6 (Incomplete)	1995-96(D1)	Ben Varn	4-13
1954-55	"Red" Coleman	8-4	1996-97	Ben Varn	9-11
1955-56	Jim Bailey	1-8	1997-98	Jim Newcome	5-15
1956-57	W.P. Walker	3-6	1998-99	Jim Newcome	2-18
1957-58	W.P. Walker	6-6	1999-00	Jim Newcome	2-18
1958-59	C.W. Branch	3-4 (Incomplete)	2000-01	Rod Ray	3-14
1959-60	Vernon Caldwell	1-12	2001-02	Rod Ray	3-15
1960-61	Vernon Caldwell	3-8	2002-03	Rod Ray	8-9
1961-62	Bill McCarren	0-6	2003-04	Rod Ray	9-13
1962-63	James E. Seegars, Jr.	0-7	2004-05	Rod Ray	6-16
1963-64	James E. Seegars, Jr.	4-8	2005-06	Rod Ray	10-11
1964-65	James E. Seegars, Jr.	Unknown	2006-07	Rod Ray	12-8
1965-66	James E. Seegars, Jr.	6-11	2007-08	Rod Ray	12-11
1966-67	James E. Seegars, Jr.	5-13	2008-09	Rod Ray	13-11
1967-68	George Lyons	Unknown	2009-10	Rod Ray	8-12
1968-69	Jerry Cogdell	9-9	2010-11	Rod Ray	8-13





# MEN'S TENNIS SEASON RECORDS

## Singles Victories

John Roland	1972-73	20
Tee Parham	1993-94	19
Chris Smith	1990-91	19
Tee Parham	1990-91	19
Rogers Walker	1973-74	18
Walt Busbee	1989-90	18
Juan Sandoval	1990-91	18
Scott Cunningham	1989-90	17
Alex Fridzon	2004-05	17
Greg Rice	1994-95	16
Dave Garner	1990-91	16
Brian Marchant	1991-92	16
Andrew Stubbs	2007-08	15
Chris Smith	1993-94	15
Fred Jayet	1994-95	15
Greg Marini	1987-88	15



**PAUL BARTHOLOMY**



**ALEX FRIZDON**



**ANDREW STUBBS**

## Doubles Victories

Tee Parham	1993-94	16
Joe Reiney	1993-94	15
Brian Marchant	1993-94	15
Chris Smith	1993-94	15
Robert Martin	1993-94	15
Paul Bartholomy	2008-09	14
Alan Donald	2008-09	14
Greg Marini	1987-88	14
Danny Manlow	2008-09	13
Stuart Robertson	2008-09	13
Joe Reiney	1994-95	13
Robert Martin	1994-95	13
EH Atkins	1950-51	13
John Kirkley	1987-88	13
Fred Jaye	1994-95	12
Brian Marchant	1994-95	12
Fred Jayet	1993-94	12
JW Kennedy	1950-51	12
Scott Cunningham	1989-90	12

## 1.000 Winning Percentages

### SINGLES

Max Boyle	1968-69
Mike Kimbrell	1968-69
Charles Smith	1968-69
Mike Love	1968-69
Scott Stevens	1986-87
Charlie Linning	1987-88
Brian Wise	1987-88
Todd Smyth	1987-88
Tim Timmons	1987-88
Wells Tiedeman	1988-89
Brian Wise	1988-89
Charlie Linning	1988-89
Todd Smyth	1988-89
Sean Tate	1988-89
Eddie Porubsky	1990-91
Ken Winter	1992-93
Alpesh Chudasoma	1992-93

### DOUBLES

Tom Lyles	1968-69
John Griz	1986-87
Charlie Linning	1987-88
Brian Wise	1987-88
Todd Smyth	1987-88
Tim Timmons	1987-88
Brian Wise	1988-89
Charlie Linning	1988-89
Todd Smyth	1988-89
Sean Tate	1988-89
Darren Foy	1989-90
Darren Foy	1990-91
Darren Foy	1991-92
Eddie Porubsky	1991-92
Joe Reiney	1992-93
Lee Porter	2002-03
Alec Wilson	2002-03



# ALL SOUTHERN-CONFERENCE



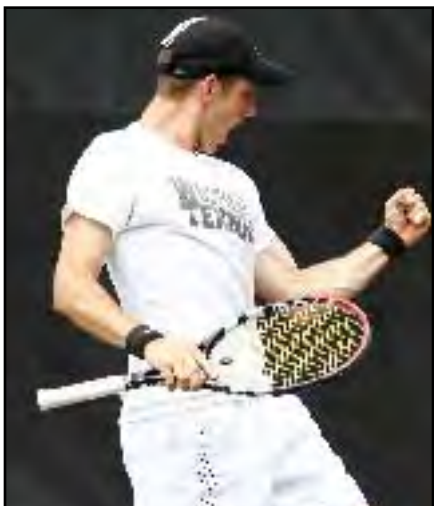
**LEE PORTER**  
2003



**KENT BALL**  
2004



**CHRIS BARLOW**  
2006



**ANDREW STUBBS**  
2005, 2006, 2007, 2008



**ALAN DONALD**  
2009



**TINUS VAN WYK**  
2009





# **HONORS AND AWARDS**

## **SOUTHERN CONFERENCE PLAYERS OF THE WEEK**

**Paul Bartholomy**

March 6, 2008

**Christopher Williams**

April 10, 2007

**Andrew Stubbs**

February 21, 2006

April 12, 2005

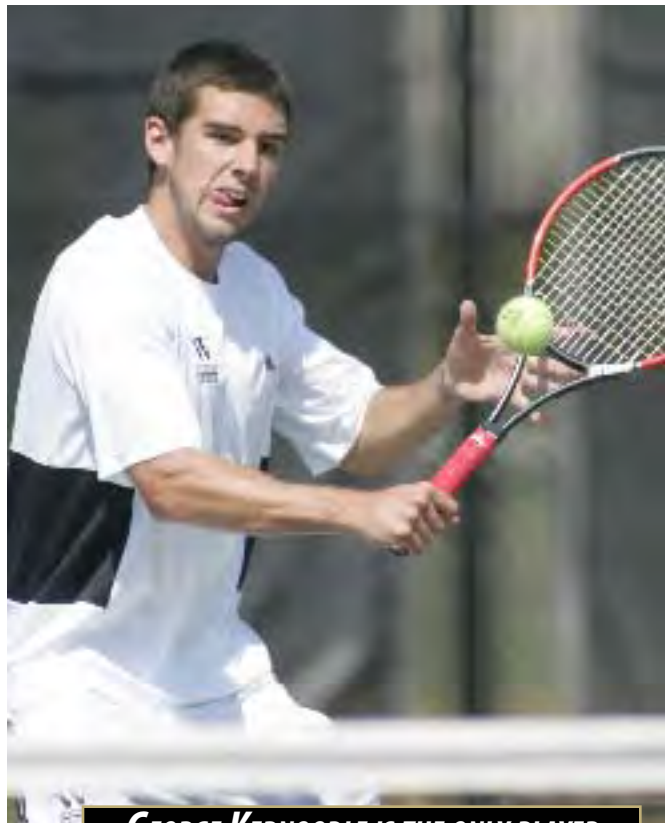
**Lee Porter**

March 18, 2003

## **SOUTHERN CONFERENCE FRESHMAN OF THE YEAR**

**George Kernodle**

2007



**GEORGE KERNOODLE IS THE ONLY PLAYER IN WOFFORD TENNIS HISTORY TO BE NAMED SoCON FRESHMAN OF THE YEAR.**

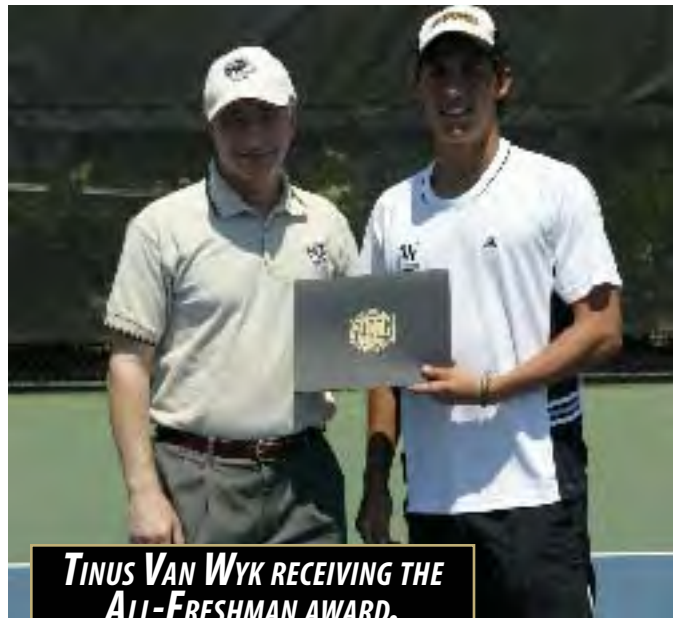
## **SOUTHERN CONFERENCE ALL-FRESHMAN TEAM**

**Tinus Van Wyk**

2009

**Danny Manlow**

2009



**TINUS VAN WYK RECEIVING THE ALL-FRESHMAN AWARD.**

## **ITA NATIONAL TEAM SPORTSMANSHIP AWARD**

**2008-2009 Men's Tennis Team**

March 2009

## **NCAA DIVISION II ALL-AMERICAN**

**Frederic Jayet**

1994

## **WOFFORD COLLEGE HALL OF FAME**

**William Child**

Inducted in 1982



## MEN'S TENNIS YEAR-BY-YEAR RESULTS

**Records from 1924-1941 are incomplete or not available.**

**\*\*NOTE: No tennis was played between the years of 1942 to 1946 due to World War II. \*\***

### 1946-47

Record: 4-5  
Home: Unknown, Away: Unknown  
Head Coach: Jack Cannon

N/A	Clemson	L, 3-4
N/A	Clemson	L, 2-7
N/A	Newberry	W, 8-1
N/A	Newberry	W, 4-0
N/A	Furman	L, 2-6
N/A	Furman	L, 3-6
N/A	Erskine	W, 7-0
N/A	Erskine	W, 7-0
N/A	Presbyterian	L, 1-6

**1947-1950 not available**

### 1950-51

Record: 6-10  
Home: Unknown, Away: Unknown  
Head Coach: Col. Howard D. Balluett

N/A	Clemson	L, 3-6
N/A	Clemson	L, 3-6
N/A	Furman	W, 7-2
N/A	College of Charleston	L, 2-7
N/A	College of Charleston	L, 3-6
N/A	Lenoir Rhyne	W, 5-2
N/A	Lenoir Rhyne	W, 7-2
N/A	USC	L, 3-6
N/A	USC	W, 5-4
N/A	The Citadel	W, 5-4
N/A	The Citadel	L, 4-5
N/A	Erskine	L, 4-5
N/A	Erskine	W, 4-3
N/A	Presbyterian	L, 2-7
N/A	Presbyterian	L, 3-6
N/A	George Washington	L, 2-7

### 1951-52

Record: 2-6 (Incomplete)  
Home: Unknown, Away: Unknown  
Head Coach: A.M. Chreitzberg

N/A	George Washington	L, 3-6
N/A	Presbyterian	L, 0-9
N/A	Furman	W, 5-4
N/A	Erskine	N/A
N/A	High Point	L, 4-5
N/A	USC	W, 5-4
N/A	Clemson	N/A
N/A	College of Charleston	L, 2-7
N/A	College of Charleston	L, 0-7
N/A	The Citadel	L, 2-7

### 1952-53

Record: 2-1 (Incomplete)  
Home: Unknown, Away: Unknown  
Head Coach: A.M. Chreitzberg

N/A	Furman	W, 5-4
-----	--------	--------

N/A	Erskine	W, 7-0
N/A	Citadel	L, 3-5
N/A	USC	N/A
N/A	Presbyterian	N/A
N/A	College of Charleston	N/A
N/A	Presbyterian "B Team"	N/A
N/A	Clemson	N/A
N/A	Davidson	N/A

### 1953-54

Record: 3-6  
Home: Unknown, Away: Unknown  
Head Coach: "Red" Coleman

N/A	The Citadel	W, 5-3
N/A	The Citadel	L
N/A	College of Charleston	L, 2-7
N/A	College of Charleston	L
N/A	USC	W, 7-2
N/A	USC	L
N/A	Furman	W
N/A	Presbyterian	L
N/A	Davidson	L

### 1954-55

Record: 5-4 (Incomplete)  
Home: Unknown, Away: Unknown  
Head Coach: "Red" Coleman

N/A	Furman	W, 8-1
N/A	USC	W, 7-2
N/A	Presbyterian	L, 2-7
N/A	Clemson	W, 6-3
N/A	Erskine	W, 7-0
N/A	College of Charleston	L
N/A	College of Charleston	L
N/A	Davidson	L, 0-9
N/A	The Citadel	W, 6-1
N/A	Wayne University	N/A

### 1955-56

Record: 1-8  
Home: Unknown, Away: Unknown  
Head Coach: Jim Bailey

N/A	USC	L, 1-8
N/A	Presbyterian	L, 2-8
N/A	College of Charleston	L, 3-6
N/A	The Citadel	L, 4-5
N/A	The Citadel	L, 3-6
N/A	Erskine	W, 5-1
N/A	Erskine	L, 3-6
N/A	Furman	L, 3-6
N/A	Furman	L, 3-6

### 1956-57

Record: 3-6  
Home: Unknown, Away: Unknown  
Head Coach: W.P. Walker

N/A	Davidson	L, 0-9
N/A	Belmont Abbey	W, 8-1
N/A	Belmont Abbey	W, 8-1
N/A	The Citadel	L, 0-9
N/A	The Citadel	L, 1-8
N/A	Clemson	L
N/A	College of Charleston	L, 3-6
N/A	College of Charleston	W, 5-4
N/A	Erskine	L

### 1957-58

Record: 2-2 (Incomplete)  
Home: N/A, Away: N/A  
Head Coach: W.P. Walker

N/A	Presbyterian College	L, 0-9
N/A	Furman	L, 0-9
N/A	College of Charleston	W, 6-3
N/A	The Citadel	W, 8-1
N/A	Belmont Abbey	N/A
N/A	Erskine	N/A

### 1958-59

Record: 3-4 (Incomplete)  
Home: N/A, Away: N/A  
Head Coach: C.W. Branch

N/A	Presbyterian	L
N/A	Citadel	L
N/A	College of Charleston	L
N/A	Kings College	L, 6-2
N/A	Belmont Abbey	N/A
N/A	Furman	W
N/A	East Tennessee State	W
N/A	Erskine	W, 5-4

**1959-1968 not available**

### 1968-69

Record: 9-9  
Home: Unknown, Away: Unknown  
Head Coach: Jerry Cogdell

N/A	Belmont Abbey	W
N/A	Belmont Abbey	W
N/A	Pfeiffer	L
N/A	Furman	L
N/A	Furman	L
N/A	Lander	W
N/A	Lander	W
N/A	Davidson	L
N/A	College of Charleston	W
N/A	College of Charleston	L
N/A	Erskine	L
N/A	Erskine	L
N/A	Gardner Webb	W
N/A	Mars Hill	W
N/A	Mars Hill	W
N/A	Pembroke	L
N/A	Appalachian State	L
N/A	USC Spartanburg	W

### 1969-70

Record: 9-8  
Home: Unknown, Away: Unknown  
Head Coach: Jack Peterson

N/A	Belmont Abbey	W, 8-1
N/A	West Chester State	L, 1-8
N/A	Mars Hill	W, 9-0
N/A	Gardner Webb	W, 7-0
N/A	College of Charleston	W, 6-2
N/A	Furman	L, 1-8
N/A	Appalachian State	L, 2-7
N/A	USC Spartanburg	W, 5-4





# 2012 WOFFORD MEN'S TENNIS

N/A	Mars Hill	W, 9-0
N/A	Erskine	L, 4-5
N/A	Gardner Webb	L, 0-9
N/A	Furman	W, 9-0
N/A	College of Charleston	L, 0-9
N/A	Belmont Abbey	W, 8-2
N/A	Pfeiffer	L, 1-7
N/A	USC Spartanburg	W, 6-2
N/A	Davidson	L, 1-8

## 1970-71

Record: 2-10  
Home: Unknown, Away: Unknown  
Head Coach: Mike Bugar

N/A	Belmont Abbey	L, 4-5
N/A	Belmont Abbey	L, 4-5
N/A	Miami (Ohio)	L, 0-9
N/A	College of Charleston	L, 2-7
N/A	College of Charleston	L, 3-6
N/A	Gardner Webb	W, 5-2
N/A	Gardner Webb	L, 1-5
N/A	Mars Hill	W, 5-4
N/A	Mars Hill	L, 3-6
N/A	Erskine	L, 0-9
N/A	Erskine	L, 0-9

## 1971-72

Record: 6-7  
Home: Unknown, Away: Unknown  
Head Coach: Mike Bugar

N/A	Mars Hill	N/A
N/A	Belmont Abbey	N/A
N/A	Gardner Webb	W, 9-0
N/A	Lander	N/A
N/A	College of Charleston	N/A
N/A	USC Spartanburg	N/A
N/A	Augusta	W, 6-3
N/A	Augusta	W, 5-4
N/A	Erskine	L, 0-9
N/A	Erskine	L, 2-7

## 1972-73

Record: Incomplete  
Home: Unknown, Away: Unknown  
Head Coach: Mike Bugar

N/A	Mars Hill	N/A
N/A	Gardner Webb	N/A
N/A	Wright State	N/A
N/A	College of Charleston	L, 0-7
N/A	Augusta	N/A
N/A	Erskine	N/A

## 1973-74

Record: 9-2  
Home: Unknown, Away: Unknown  
Head Coach: Mike Bugar

N/A	Limestone	W, 7-2
N/A	UNC Charlotte	L, 1-8
N/A	Gardner Webb	W, 7-2
N/A	Augusta	W, 7-2
N/A	Belmont Abbey	W, 9-0
N/A	Erskine	W, 5-4
N/A	Mars Hill	W, 9-0
N/A	Gardner Webb	W, 2-1
N/A	USC Branch	W, 8-1
N/A	Erskine	L, 2-7
N/A	Limestone	W, 6-3
N/A	Belmont Abbey	W, 9-0

\*In District 6 Tournament finished 4th place out of 9 teams

## 1974-75

Record: 8-2  
Home: Unknown, Away: Unknown  
Head Coach: Mike Bugar

N/A	Limestone	W, 6-3
N/A	Lander	W, 5-4
N/A	Gardner Webb	W, 9-0
N/A	Western Carolina	L, 3-6
N/A	Lenoir Rhyne	W, 9-0
N/A	Belmont Abbey	W, 7-2
N/A	Lander	W, 6-3
N/A	Erskine	L, 3-6
N/A	Gardner Webb	W, 9-0
N/A	Limestone	W, 8-1

\*In District 6 Tournament finished 4th place out of 11 teams

## 1975-76

Record: 3-13  
Home: Unknown, Away: Unknown  
Head Coach: Mike Bugar & Jim Newcome

N/A	College of Charleston	L, 0-9
N/A	Belmont Abbey	W, 8-1
N/A	North Greenville	L, 0-9
N/A	Gardner Webb	W, 6-3
N/A	Anderson	L, 2-7
N/A	Limestone	L, 4-5
N/A	Lander	L, 2-7
N/A	North Greenville	L, 1-8
N/A	Erskine	L, 1-8
N/A	UNC Asheville	L, 2-7
N/A	Gardner Webb	W, 5-4
N/A	Erskine	L, 0-9
N/A	UNC Asheville	L, 2-7
N/A	Limestone	L, 4-5
N/A	Lander	L, 1-8
N/A	College of Charleston	L, 0-9

## 1976-77

Record: 7-6  
Home: N/A, Away: N/A  
Head Coach: Jim Newcome

N/A	Winthrop	W, 5-4
N/A	Erskine	L, 0-9
N/A	Erskine	L, 0-9
N/A	Newberry	W, 7-2
N/A	UNC Asheville	W, 6-3
N/A	Gardner Webb	W, 7-2
N/A	Limestone	L, 0-9
N/A	Gardner Webb	W, 8-1
N/A	USC Spartanburg	L, 3-6
N/A	Mars Hill	W, 8-1
N/A	Newberry	W, 8-1
N/A	Lander	L, 1-8
N/A	Limestone	L, 1-8

## 1977-1978 not available

## 1978-79

Record: Unknown  
Home: Unknown, Away: Unknown  
Head Coach: Ed Harris

N/A	Newberry	N/A
N/A	Gardner Webb	N/A
N/A	USC Spartanburg	N/A
N/A	Limestone	N/A

## 1979-80

Record: 2-9 (not complete)  
Home: 2-4, Away: 0-5  
Head Coach: Ed Harris

Mar. 1	Erskine	N/A
Mar. 3	Lander	N/A
Mar. 4	at Limestone	L, 0-9
Mar. 11	Erskine	L, 0-9
Mar. 14	at USC Spartanburg	L, 3-5
Mar. 17	Newberry	N/A
Mar. 19	Newberry	W, 9-0
Mar. 20	USC Spartanburg	N/A
April 2	at Lander	L, 1-8
April 3	at Erskine	L, 1-8
April 5	Winthrop	L, 1-8
April 10	USC Spartanburg	W, 5-4
April 11	UNC Asheville	L, 1-8
April 14	Limestone	L, 0-6
April 12	Winthrop	N/A
April 15	at Newberry	L, 1-8

\*Attended District Tournament at College of Charleston Results Unknown

## 1980-81

Record: 10-3  
Home: Unknown, Away: Unknown  
Head Coach: Charlie McGinty

N/A	Gardner Webb	N/A
N/A	Spartanburg Methodist	N/A
N/A	Erskine	N/A
N/A	Mars Hill	N/A
N/A	Belmont Abbey	N/A
N/A	Newberry	N/A
N/A	Winthrop	N/A
N/A	USC Spartanburg	W, 6-3

\*Team tied for 6th place in the NAIA District 6 tournament with Erskine and Francis Marion

## 1981-82

Record: 5-9  
Home: Unknown, Away: Unknown  
Head Coach: Charlie McGinty

Opponents: NAIA Schools in North & South Carolina  
\*Finished 8th in the District 6 Tournament

## 1982-83

Record: 12-2  
Home: Unknown, Away: Unknown  
Head Coach: Charlie McGinty

Opponents: NAIA Schools in North & South Carolina  
\*Won the Gardner Webb Tournament  
\*Finished 4th in the District 6 Tournament  
\*Unable to play in Spring because no women's team.

## 1983-84

Record: 1-6  
Home: Unknown, Away: Unknown  
Head Coach: Declan O' Donoghue



## 1984-85

Record: 7-7

Home: Unknown, Away: Unknown

Head Coach: Declan O'Donoghue

## 1985-86

Record: 9-7

Home: 5-4, Away: 4-3

Head Coach: Dr. Ben Varn

Feb. 14	at Lander	L, 0-9
Feb. 20	Limestone	L, 4-5
Feb. 25	at USC Spartanburg	W, 7-2
Mar. 1	Presbyterian	L, 0-7
Mar. 3	at Erskine	W, 5-4
Mar. 8	Young-Harris	W, 9-0
Mar. 11	Gardner Webb	L, 2-7
Mar. 17	at Limestone	L, 4-5
Mar. 21	Coastal Carolina	L, 1-8
April 1	Lenoir Rhyne	W, 7-2
April 3	Erskine	W, 6-3
April 4	at Gardner Webb	W, 5-4
April 6	USC Spartanburg	W, 5-4
April 7	at Presbyterian	L, 0-6
April 14	at Lenoir Rhyne	W, 8-1
April 17	Newberry	W, 9-0

## 1986-87

Record: 8-10

Home: 4-6, Away: 4-4

Head Coach: Dr. Ben Varn

Feb. 23	at Limestone	W, 5-4
Feb. 24	Oglethorpe	L, 3-6
Mar. 2	at Erskine	W, 6-3
Mar. 3	Newberry	W, 9-0
Mar. 6	Widener	L, 4-5
Mar. 7	Lynchburg	L, 4-5
Mar. 10	Washington	L, 0-9
Mar. 11	USC Spartanburg	W, 5-4
Mar. 12	at Presbyterian	L, 0-9
Mar. 14	at The Citadel	L, 0-9
Mar. 15	at College of Charleston	L, 0-9
Mar. 16	Lenoir Rhyne	W, 9-0
Mar. 17	at Newberry	W, 9-0
Mar. 19	Limestone	L, 3-6
Mar. 30	at North Greenville	L, 0-9
Mar. 31	at USC Spartanburg	W, 6-3
April 2	Erskine	W, 7-2
April 7	Presbyterian	L, 0-9

## 1987-88

Record: 13-8

Home: 5-2, Away: 8-6

Head Coach: Dr. Ben Varn

Feb. 22	at Erskine	W, 5-4
Feb. 25	Gardner Webb	W, 7-2
Mar. 1	Presbyterian	L, 2-7
Mar. 4	Newberry College	W, 9-0
Mar. 8	King College	W, 6-3
Mar. 14	Western Carolina	W, 7-2
Mar. 15	Erskine	L, 4-5
Mar. 17	at USC Spartanburg	W, 7-2
Mar. 20	at Western Carolina	W, 5-4
Mar. 22	at Newberry	W, 9-0
Mar. 24	at Gardner Webb	W, 8-1
Mar. 26	vs. Berry College	L, 3-6
Mar. 27	vs. East Tennessee State#	L, 1-8

Mar. 28	at Edinboro	W, 7-2
Mar. 29	at College of Charleston	L, 0-9
Mar. 30	at Baptist College	W, 5-4
April 4	at North Greenville	L, 0-8
April 5	USC Spartanburg	W, 7-2
April 7	at Furman	L, 1-8
April 8	at Francis Marion	L, 3-6
April 9	at Coker	W, 7-2

## 1988-89

Record: 12-6

Home: 5-2, Away: 7-4

Head Coach: Dr. Ben Varn

Feb. 25	Western Carolina	L, 2-7
Mar. 2	at UNC Asheville	L, 3-6
Mar. 8	Newberry	W, 9-0
Mar. 9	UNC Asheville	W, 6-3
Mar. 10	Queens	W, 8-1
Mar. 11	at Elon	L, 1-8
Mar. 13	USC Spartanburg	W, 6-3
Mar. 15	at Erskine	L, 3-6
Mar. 19	at Webber	W, 7-0
Mar. 20	at Eckerd	W, 5-3
Mar. 21	at Tampa University	W, 7-2
Mar. 22	at St. Leo College	W, 7-2
Mar. 27	at Gardner Webb	W, 6-3
Mar. 29	at USC Spartanburg	W, 6-3
April 7	at Davidson	L, 0-9
April 12	Gardner Webb	W, 6-3
April 14	East Tennessee State	L, 2-7
April 17	at Western Carolina	W, 7-2

## 1989-90

Record: 12-8

Home: 4-4, Away: 8-4

Head Coach: Dr. Ben Varn

Feb. 17	Baptist College	W, 5-2
Feb. 20	Western Carolina	W, 5-4
Feb. 22	at Queens	W, 9-0
Feb. 26	at Presbyterian	W, 6-3
Mar. 1	at USC Spartanburg	W, 5-4
Mar. 5	Winthrop	L, 3-6
Mar. 9	at UNC Asheville	W, 6-3
Mar. 10	at Furman	L, 0-9
Mar. 12	Presbyterian	W, 8-1
Mar. 14	Erskine	W, 6-3
Mar. 15	Lincoln Memorial	L, 4-5
Mar. 19	East Tennessee State	L, 0-9
Mar. 23	at Lenior Rhyne	W, 9-0
Mar. 25	at UNC Greensboro	L, 3-6
Mar. 28	at Clemson	W, 5-4
April 2	USC Spartanburg	L, 1-7
April 3	at Erskine	W, 6-3
April 7	at West Georgia	W, 7-2
April 8	at Jacksonville State	L, 0-9
April 9	at North Alabama	

## 1990-91

Record: 16-9

Home: 9-4, Away: 4-5 Neutral: 3-0

Head Coach: Dr. Ben Varn

Feb. 15-16	David Lipscomb#	W, 8-1
	Eastern Michigan#	W, 5-4
	Lincoln Memorial#	W, 5-4
Feb. 17	UT Chattanooga	W, 5-4
Feb. 19	at Winthrop	L, 3-6
Feb. 24	at The Citadel	W, 6-3
Feb. 25	Georgia College	L, 2-7

Feb. 26	Western Carolina	W, 6-3
Feb. 27	Central College	W, 9-0
Feb. 28	Presbyterian	W, 6-3
Mar. 2	Robert Morris	W, 7-2
Mar. 5	UNC Asheville	W, 8-1
Mar. 9	North Alabama	W, 8-1
Mar. 11	Anderson College	L, 0-9
Mar. 14	at USC Spartanburg	L, 1-8
Mar. 17	at Elon	L, 1-8
Mar. 21	Queens	W, 5-4
Mar. 23	at Charleston Southern	L, 3-6
Mar. 24	at Armstrong State	L, 2-7
Mar. 25	at Valdosta State	W, 7-2
Mar. 26	at Mercer	W, 5-1
April 2	at Presbyterian	W, 7-2
April 4	Furman	L, 0-9
April 9	Gardner Webb	W, 9-0
April 11	USC Spartanburg	L, 2-7

# - Lincoln Memorial Tourney in Harrogate, TN

## 1991-92

Record: 13-8

Home: Incomplete, Away: Incomplete

Head Coach: Dr. Ben Varn

Feb. 14	Winthrop#	L, 2-5
	Furman#	L, 0-7
	Presbyterian#	W, 4-3
Feb. 21	Francis Marion	W, 8-1
Feb. 22	Barton	N/A
Feb. 27	Presbyterian	N/A
Feb. 29	Lenoir Rhyne	N/A
Mar. 1	Carson Newman	N/A
Mar. 3	USC Spartanburg	N/A
Mar. 5	at Anderson College	N/A
Mar. 9	at Gardner Webb	N/A
Mar. 10	at Queens	N/A
Mar. 12	Troy State^	W, 7-2
Mar. 13	Rollins^	N/A
Mar. 14	Central Oklahoma^	N/A
Mar. 16	at The Citadel	W
Mar. 17	at College of Charleston	N/A
Mar. 26	at Presbyterian	N/A
Mar. 27	Lincoln Memorial	N/A
Mar. 28	at Furman	N/A
Mar. 29	at Appalachian State	W
April 2	at Western Carolina	W
April 5	at Elon	N/A
April 7	USC Spartanburg	N/A

# - Furman Shootout in Greenville, SC  
^ - Division II Regional Tournament at Armstrong State

## 1992-93

Record: 8-8

Home: 5-5, Away: 2-2 Neutral: 1-1

Head Coach: Dr. Ben Varn

Feb. 15	Queens	W, 5-2
Feb. 16	Mars Hill	Rain Out
Feb. 19	Georgia College	L, 3-6
Feb. 23	Erskine	W, 5-4
Feb. 25	Newberry	W, 9-0
Feb. 27	USC Aiken	W, 9-0
Mar. 1	Presbyterian	L, 4-5
Mar. 8	USC Spartanburg	L, 0-6
Mar. 12	Elon^	L, 4-5
Mar. 13	Eckerd^	W, 5-2
Mar. 15	Western Carolina	Rain Out
Mar. 19	High Point	Rain Out
Mar. 20	Elon	L, 1-5
Mar. 21	Appalachian State	L, 1-6
Mar. 22	at North Alabama	Rain Out





# 2012 WOFFORD MEN'S TENNIS

Mar. 30	at UNC Asheville	W, 6-1
April 1	at Erskine	L, 4-5
April 6	North Greenville	Rain Out
April 9	at USC Spartanburg	W, 5-1
April 10	Francis Marion	W, 5-1

^ - Division II Regional Tournament at Armstrong State

## 1993-94

Record: 17-5

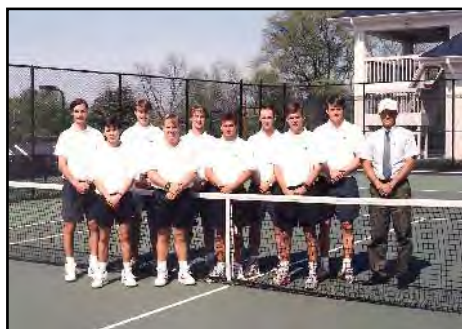
Home: Unknown, Away: Unknown

Head Coach: Dr. Ben Varn

Feb. 4	Presbyterian#	W, 6-1
Feb. 5	Mercer#	W, 4-3
Feb. 6	Furman#	L, 1-6
Feb. 24	at Erskine	W, 5-2
Feb. 25	at USC Aiken	W, 7-0
Feb. 26	at Queens	W, 7-0
Mar. 3	at USC Spartanburg	W, 6-1
Mar. 5	Pfeiffer	W, 7-0
Mar. 6	Augusta	W, 7-0
Mar. 8	UNC Asheville	W, 7-0
Mar. 10	Eckerd^	W, 6-1
Mar. 11	Georgia College^	L, 3-4
Mar. 12	Barry^	L, 1-5
Mar. 13	N. Alabama^	W, 4-3
Mar. 14	Western Carolina	W, 5-2
Mar. 15	at Newberry	W, 7-0
Mar. 17	Erskine	W, 6-1
Mar. 18	Wingate	W, 7-0
Mar. 19	at Appalachian State	W, 4-2
Mar. 21	High Point	cancelled
Mar. 24	USC Spartanburg	cancelled
Mar. 31	at Presbyterian	cancelled
April 1	at Francis Marion	L, 2-5
April 2	at Coastal Carolina	L, 2-5
April 4	at Charleston Southern	W, 5-2
April 5	at South Carolina State	cancelled

# - Furman Shootout in Greenville, SC

^ - Division II Regional Tournament at Armstrong State



The 1993 team coached by Dr. Ben Varn.

## 1994-95

Record: 14-5

Home: 9-3, Away: 5-2

Head Coach: Dr. Ben Varn

Feb. 19	USC Aiken	W, 7-0
Feb. 20	at Gardner Webb	W, 7-0
Feb. 21	Erskine	W, 5-2
Feb. 23	at USC Spartanburg	L, 3-4
Mar. 2	Queens	L, 3-4
Mar. 11	ETSU	L, 1-6
Mar. 12	Chattanooga	L, 3-4
Mar. 14	Furman	W, 5-2
Mar. 16	at Presbyterian	W, 7-0
Mar. 19	USC Spartanburg	W, 5-2
Mar. 21	Winthrop	W, 5-2
Mar. 23	at Erskine	L, 3-4

Mar. 24	Francis Marion	W, 4-3
Mar. 25	South Carolina State	W, 7-0
Mar. 27	at Davidson	W, 4-3
Mar. 31	Charleston Southern	W, 6-1
April 1	Appalachian State	L, 2-5
April 2	at Augusta	W, 5-2
April 3	at Mercer	W, 4-3

## 1995-1996

Record: 4-13

Home: 2-4, Away: 2-9

Head Coach: Dr. Ben Varn

Feb. 4	at Clemson	L, 0-7
Feb. 24	Coastal Carolina	L, 3-4
Feb. 25	Mercer	L, 2-4
Feb. 26	at Queens	W, 6-0
Feb. 28	at Winthrop	L, 2-5
Mar. 3	at Chattanooga	L, 1-6
Mar. 4	at ETSU	L, 0-7
Mar. 10	USC Spartanburg	L, 2-5
Mar. 11	Erskine	W, 7-0
Mar. 12	USC Aiken	W, 7-0
Mar. 16	at Furman	L, 2-5
Mar. 17	at Appalachian State	cancelled
Mar. 19	Presbyterian	cancelled
Mar. 20	at UNC Asheville	cancelled
Mar. 21	Davidson	L, 2-5
Mar. 22	at South Carolina State	W, 7-0
Mar. 23	at The Citadel	L, 3-4
Mar. 24	at College of Charleston	L, 1-6
Mar. 25	at Charleston Southern	L, 2-5
Mar. 26	at Jacksonville	L, 1-6

## 1996-97

Record: 9-11

Home: 5-8, Away: 4-3

Head Coach: Dr. Ben Varn

Feb. 18	Newberry	W, 7-0
Feb. 23	South Carolina State	W, 5-2
Mar. 7	Charleston Southern	L, 2-5
Mar. 8	Furman	L, 2-5
Mar. 8	College of Charleston	L, 3-4
Mar. 9	The Citadel	W, 5-2
Mar. 10	Miami (Ohio)	L, 1-6
Mar. 12	at Erskine	W, 6-1
Mar. 15	Chattanooga	L, 1-6
Mar. 20	ETSU	L, 3-4
Mar. 21	Southern Mississippi	L, 2-5
Mar. 24	Winthrop	L, 0-7
Mar. 26	UNC Asheville	W, 6-1
Mar. 27	at Davidson	L, 2-5
Mar. 29	at Mercer	W, 5-2
Mar. 30	at Georgia Southern	W, 6-1
Mar. 31	at Coastal Carolina	W, 6-1
April 8	at Appalachian State	L, 2-5
April 10	USC Spartanburg	W, 4-1
April 11	at UNC Greensboro	L, 3-4

## 1997-98

Record: 5-15, SoCon Record: 1-8

Home: 5-6, Away: 0-8 Neutral: 0-1

Head Coach: Jim Newcome

Feb. 17	High Point	L, 1-6
Feb. 25	at Charleston Southern	L, 0-7
Mar. 3	UNC Asheville	L, 2-5
Mar. 6	at Chattanooga*	L, 2-5
Mar. 11	Carson-Newman	W, 4-3
Mar. 12	Erskine	W, 5-2
Mar. 14	at College of Charleston	L, 1-6

Mar. 19	Eastern Kentucky	W, 5-2
Mar. 20	Elon	W, 4-3
Mar. 21	at The Citadel*	L, 3-4
Mar. 22	at Georgia Southern*	L, 1-6
Mar. 27	VMI*	W, 4-3
Mar. 28	at UNC Charlotte	L, 2-5
Mar. 29	South Carolina State	L, 2-5
April 1	at East Tennessee State*	L, 0-7
April 3	UNC Greensboro*	L, 0-7
April 5	Davidson*	L, 0-7
April 8	Appalachian State*	L, 2-5
April 14	at Furman*	L, 1-6
April 16	vs. The Citadel^	L, 2-4

note: First year in Southern Conference

\* - Southern Conference match

^ - Southern Conference Tournament

## 1998-99

Record: 2-18, SoCon Record: 1-9

Home: 0-10, Away: 2-7 Neutral: 0-1

Head Coach: Jim Newcome

Feb. 14	at South Carolina State	L, 3-4
Feb. 24	Lees-McRae	L, 1-6
Feb. 27	at Mercer	L, 2-5
Feb. 28	at Emory	L, 1-6
Mar. 2	at UNC Asheville	L, 2-5
Mar. 7	Coastal Carolina	L, 0-7
Mar. 8	East Tennessee State*	L, 0-7
Mar. 11	USC Aiken	L, 1-6
Mar. 12	at Erskine	W, 4-3
Mar. 16	at Davidson*	L, 1-6
Mar. 19	Chattanooga*	L, 1-6
Mar. 20	at Appalachian State*	L, 1-6
Mar. 26	College of Charleston*	L, 0-5
Mar. 28	The Citadel*	L, 0-7
April 6	Winthrop	L, 0-7
April 9	Georgia Southern*	L, 0-7
April 10	at UNC Greensboro*	L, 0-7
April 11	at VMI*	W, 5-2
April 14	Furman*	L, 0-7
April 15	vs. College of Charleston^	L, 0-4

\* - Southern Conference match

^ - Southern Conference Tournament

## 1999-00

2-18, SoCon Record: 1-9

Home: 2-6, Away: 0-11 Neutral: 0-1

Head Coach: Jim Newcome

Oct. 16	UNC Asheville	W, 5-2
Feb. 20	at Elon	L, 0-7
Feb. 23	S.C. State	L, 1-6
Feb. 26	at College of Charleston*	L, 0-7
Mar. 5	at Coastal Carolina	L, 1-6
Mar. 7	Erskine	L, 0-7
Mar. 10	East Carolina	L, 1-6
Mar. 11	Appalachian State*	L, 0-4
Mar. 16	at UNC Charlotte	L, 0-7
Mar. 22	at UNC Asheville	L, 1-6
Mar. 24	at East Tennessee State*	L, 0-7
Mar. 28	at Georgia Southern*	L, 0-7
April 1	at Furman*	L, 0-7
April 2	VMI*	W, 4-2
April 9	at Chattanooga*	L, 0-7
April 12	at Winthrop	L, 0-7
April 15	UNC Greensboro*	L, 0-5
April 17	Davidson*	L, 0-6
April 20	at The Citadel*	L, 0-7
April 27	vs. The Citadel^	L, 2-4

\* - Southern Conference match

^ - Southern Conference Tournament





The 1999 team coached by Jim Newcome.

## 2000-01

Record: 3-14, SoCon Record: 2-7  
Home: 1-8, Away: 2-5 Neutral: 0-1  
Head Coach: Rod Ray

Feb. 17	at Francis Marion	L, 1-8
Feb. 18	at Coastal Carolina	L, 1-6
Feb. 20	Winthrop	L, 2-5
Feb. 24	at VMI*	W, 6-1
Mar. 10	East Tennessee State*	L, 0-7
Mar. 14	Liberty	L, 3-4
Mar. 15	Chattanooga*	L, 0-4
Mar. 16	Furman*	L, 0-7
Mar. 17	College of Charleston*	L, 0-7
Mar. 18	at UNC Greensboro*	L, 1-6
Mar. 19	at UNC Asheville	W, 4-1
Mar. 24	at High Point	L, 1-6
April 5	Davidson*	L, 1-6
April 6	The Citadel*	W, 5-2
April 7	Georgia Southern*	L, 0-7
April 14	at Appalachian State	L, 1-6
April 19	vs. College of Charleston^	L, 0-4

\* - Southern Conference match  
^ - Southern Conference Tournament

## 2001-02

Record: 3-15, SoCon Record: 0-8  
Home: 1-6, Away: 2-9  
Head Coach: Rod Ray

Feb. 9	at Emory	L, 2-5
Feb. 10	at Georgia State	L, 2-5
Feb. 15	High Point	L, 3-4
Feb. 16	at Belmont Abbey	W, 5-2
Feb. 17	South Carolina	L, 0-7
Feb. 23	Coastal Carolina	L, 3-4
Feb. 28	at Winthrop	L, 1-6
Mar. 1	at The Citadel*	L, 3-4
Mar. 8	Elon	L, 2-5
Mar. 9	Appalachian State*	L, 1-6
Mar. 13	UNC Greensboro*	L, 0-7
Mar. 17	at Chattanooga*	L, 0-7
Mar. 23	at Gardner Webb	W, 5-2
Mar. 24	at Davidson*	L, 1-6
April 2	at College of Charleston*	L, 1-6
April 3	at Furman*	L, 0-7
April 5	at East Tennessee State*	L, 2-5
April 6	Mercer	W, 4-3

\* - Southern Conference match

## 2002-03

Record: 8-9, SoCon Record: 4-5  
Home: 6-3, Away: 2-5 Neutral: 0-1  
Head Coach: Rod Ray

Feb. 1	at Stetson	L, 1-6
Feb. 2	at Florida Southern	L, 3-4
Feb. 20	Mars Hill	W, 7-0
Feb. 23	at Coastal Carolina	W, 4-3
Mar. 5	Winthrop	L, 2-5
Mar. 7	North Greenville	W, 6-1
Mar. 9	Georgia Southern*	L, 3-4
Mar. 11	Chattanooga*	W, 4-3
Mar. 22	at Appalachian State*	W, 5-2
April 1	at College of Charleston*	L, 1-6
April 2	at The Citadel*	L, 3-4
April 4	UNC Greensboro*	W, 5-2
April 7	at East Tennessee State*	L, 1-6
April 9	Furman*	L, 0-5
April 12	Gardner-Webb	W, 6-1
April 13	Davidson*	W, 4-3
April 17	vs. Appalachian State^	L, 2-4

\* - Southern Conference match  
^ - Southern Conference Tournament

## 2003-04

Record: 11-8, SoCon Record: 6-4  
Home: 7-2, Away: 4-5 Neutral: 0-1  
Head Coach: Rod Ray

Jan. 24	at Stetson	W, 5-2
Jan. 25	at Jacksonville	L, 3-4
Feb. 7	Coastal Carolina	W, 7-0
Feb. 18	at Gardner Webb	W, 6-1
Feb. 20	High Point	L, 1-6
Feb. 21	at South Carolina	L, 1-6
Feb. 22	vs. Richmond#	L, 1-6
Mar. 3	at Charlotte	W, 5-2
Mar. 4	The Citadel*	L, 2-5
Mar. 6	at Georgia Southern*	W, 4-3
Mar. 14	at Chattanooga*	L, 3-4
Mar. 19	Appalachian State*	L, 3-4
Mar. 20	at North Carolina A&T	W, 7-0
Mar. 21	at UNC Greensboro*	L, 3-4
Mar. 26	College of Charleston*	L, 3-4
April 3	at Davidson*	L, 3-4
April 5	East Tennessee State*	L, 1-6
April 12	at UNC Asheville	W, 3-2
April 14	at Furman*	L, 1-6
April 17	Elon*	L, 3-4
April 22	vs. Elon^	W, 4-3
April 23	vs. College of Charleston^	L, 1-4

# - in Columbia, SC  
\* - Southern Conference match  
^ - Southern Conference Tournament

## 2004-2005

Record: 6-16, SoCon Record: 5-5  
Home: 4-4, Away: 2-11 Neutral: 0-1  
Head Coach: Rod Ray

Jan. 22	at Stetson	L, 1-5
Jan. 23	at Jacksonville	L, 1-4
Jan. 28	at Georgia State	L, 0-4
Feb. 5	at Mercer	W, 4-3
Feb. 6	at No. 35 Georgia Tech	L, 0-7
Feb. 11	at Charleston Southern	L, 1-6
Feb. 13	at No. 41 South Carolina	L, 0-7
Feb. 18	at High Point	L, 0-7
Feb. 19	at Elon*	W, 4-3
Feb. 22	Gardner Webb	W, 5-2
Feb. 23	UNC Asheville	L, 3-4
Mar. 5	at The Citadel*	L, 3-4
Mar. 7	Charlotte	L, 2-4
Mar. 9	Winthrop	L, 2-5
Mar. 19	at College of Charleston*	L, 2-5
April 2	at Appalachian State*	L, 2-5

April 3	Georgia Southern*	W, 4-3
April 9	UNC Greensboro*	W, 4-3
April 10	Davidson*	W, 4-3
April 15	at East Tennessee State*	L, 1-6
April 17	Furman*	L, 3-4
April 22	vs. The Citadel^	L, 3-4

\* - Southern Conference match  
^ - Southern Conference Tournament

## 2005-06

Record: 10-11, SoCon Record: 5-4  
Home: 6-2, Away: 4-8 Neutral: 0-1  
Head Coach: Rod Ray

Jan. 21	at Stetson	L, 2-5
Jan. 22	at Embry-Riddle	L, 0-7
Jan. 28	at No. 12 South Carolina	L, 0-7
Feb. 8	at Gardner Webb	W, 5-2
Feb. 12	Mercer	W, 5-2
Feb. 17	High Point	W, 4-3
Feb. 24	The Citadel*	L, 3-4
Mar. 3	Appalachian State*	W, 5-2
Mar. 5	at Chattanooga*	L, 2-5
Mar. 8	at Winthrop	L, 0-7
Mar. 12	at UNC Greensboro*	W, 5-2
Mar. 15	at Davidson*	W, 4-3
Mar. 17	at Charlotte	L, 2-5
Mar. 22	at No. 67 Furman*	L, 0-7
Mar. 28	Elon*	L, 2-5
April 1	Campbell	W, 4-3
April 1	Belmont	W, 4-3
April 5	at Loyola Marymount	L, 1-6
April 10	College of Charleston*	W, 4-3
April 15	at Georgia Southern*	W, 7-0
April 21	vs. No. 4 Chattanooga^	L, 2-4

\* - Southern Conference match  
^ - Southern Conference Tournament

## 2006-07

Record: 12-8, SoCon Record: 5-4  
Home: 7-3, Away: 5-3 Neutral: 0-2  
Head Coach: Rod Ray

Jan. 20	at Stetson	W, 4-3
Jan. 28	at No. 38 South Carolina	L, 0-7
Feb. 10	at Mercer	W, 4-3
Feb. 12	South Carolina State	W, 4-3
Feb. 14	Gardner Webb	W, 5-2
Feb. 22	Winthrop	L, 0-7
Mar. 3	at No. 57 Elon*	L, 0-7
Mar. 11	Davidson*	W, 6-1
Mar. 15	vs. Indiana#	L, 1-6
Mar. 16	Liberty	W, 7-0
Mar. 24	UNC Greensboro*	W, 5-2
Mar. 25	Georgia Southern*	W, 5-2
Mar. 30	Chattanooga*	L, 2-5
Mar. 31	Charlotte	W, 6-1
April 3	at The Citadel*	W, 6-1
April 4	at No. 58 Coll. of Charleston*	L, 2-5
April 5	at Coastal Carolina	W, 4-3
April 12	No. 64 Furman*	L, 2-5
April 14	at Appalachian State*	W, 4-3
April 21	vs. No. 58 Furman^	L, 0-4

# - in Clemson, SC  
\* - Southern Conference match  
^ - Southern Conference Tournament





# 2012 WOFFORD MEN'S TENNIS

## 2007-08

Record: 12-11, SoCon Record: 5-4  
Home: 7-2, Away: 4-7 Neutral: 1-2  
Head Coach: Rod Ray

Jan. 27	at No. 56 South Carolina	L, 1-6
Jan. 30	at Gardner Webb	W, 5-2
Feb. 3	Mercer	W, 5-2
Feb. 7	USC Upstate	L, 1-6
Feb. 12	Coastal Carolina	W, 4-3
Feb. 15	at High Point	L, 1-6
Feb. 17	vs. Yale#	L, 1-6
Feb. 20	Presbyterian	W, 6-1
Feb. 25	The Citadel*	L, 3-4
Feb. 27	at Winthrop	L, 2-5
Feb. 28	UNC Asheville	W, 7-0
Mar. 1	at Georgia Southern*	L, 3-4
Mar. 12	at Charlotte	W, 4-3
Mar. 16	No. 66 Elon*	W, 4-3
Mar. 18	at No. 40 Georgia Tech	L, 0-7
Mar. 21	at Davidson*	W, 4-3
Mar. 30	College of Charleston*	W, 5-2
April 1	at Chattanooga*	L, 3-4
April 8	Appalachian State*	W, 5-2
April 10	at No. 69 Furman*	L, 0-7
April 12	at UNC Greensboro*	W, 4-3
April 18	vs. The Citadel*^	W, 4-3
April 19	vs. Elon*^	L, 1-4

# - in Greenville, SC

\* - Southern Conference match

^ - Southern Conference Tournament

## 2008-09

Record: 13-11, SoCon Record: 7-4  
Home: 8-0, Away: 3-9 Neutral: 2-2  
Head Coach: Rod Ray

Jan. 17	at No. 52 South Carolina	L, 1-6
Jan. 18	at Georgia Tech	L, 0-7
Jan. 30	at Florida Atlantic	L, 2-5
Feb. 1	at No. 2 Barry	L, 1-8
Feb. 7	at Coastal Carolina	L, 1-6
Feb. 7	vs. Mount Olive^	W, 7-0
Feb. 13	at Presbyterian	W, 7-0
Feb. 25	Charlotte	W, 5-2
Feb. 26	at USC Upstate	L, 0-7
Feb. 27	vs. Cornell#	L, 0-7
Mar. 5	UNC Asheville	W, 6-1
Mar. 8	Lipscomb	W, 7-0
Mar. 8	Gardner Webb	W, 6-1
Mar. 14	at Elon*	L, 2-5
Mar. 20	College of Charleston*	W, 4-3
Mar. 21	Georgia Southern*	W, 4-3
Mar. 26	at Appalachian State*	L, 3-4
Mar. 28	vs. The Citadel*#	W, 6-1
April 4	at UNC Greensboro*	W, 4-3
April 4	Chattanooga*	W, 6-1
April 8	at Davidson*	W, 5-2
April 15	at No. 69 Furman*	L, 2-5
April 18	Samford*	W, 4-3
April 24	vs. College of Charleston!	L, 1-4

# - in Greenville, SC

^ - in Myrtle Beach, SC

\* - Southern Conference match

! - Southern Conference Tournament



The 2008-09 team coached by Rod Ray.

## 2009-10

Record: 8-12, SoCon Record: 4-6  
Home: 3-6, Away: 5-5, Neutral: 0-1  
Head Coach: Rod Ray

Jan. 16	at South Carolina	L, 1-6
Jan. 20	at Georgia Tech	L, 1-6
Feb. 3	Presbyterian	W, 5-2
Feb. 8	Brevard	W, 7-0
Feb. 11	Coastal Carolina	L, 4-3
Feb. 17	at Gardner-Webb	W, 4-3
Feb. 21	Troy	L, 2-5
Feb. 27	at Virginia	L, 0-7
Mar. 4	at Charlotte	W, 5-2
Mar. 7	at Georgia Southern*	W, 5-2
Mar. 13	vs. Yale ^	L, 1-6
Mar. 16	Appalachian State*	W, 4-3
Mar. 20	UNC Greensboro*	L, 2-5
Mar. 27	at Chattanooga*	W, 4-3
Mar. 28	at Samford*	L, 3-4
Mar. 31	Davidson*	L, 0-7
April 2	at College of Charleston*	L, 0-7
April 11	Elon*	L, 1-6
April 13	Furman*	L, 1-6
April 17	The Citadel*	W, 4-3

^ - in Charleston, SC

\* - Southern Conference match

## 2010-11

Record: 8-13, SoCon Record: 4-6  
Home: 5-4, Away: 3-7, Neutral: 0-2  
Head Coach: Rod Ray

Jan. 15	at Clemson	L, 0-7
Jan. 16	at No. 56 South Carolina	L, 1-6
Jan. 29	Winthrop	L, 0-7
Feb. 9	King College	W, 7-0
Feb. 13	at Coastal Carolina	L, 1-6
Feb. 17	at Presbyterian	W, 4-3
Feb. 21	Charlotte	W, 5-2
Feb. 23	at USC Upstate	L, 2-5
Mar. 1	Gardner-Webb	W, 4-3
Mar. 5	at UNC Greensboro*	L, 1-6
Mar. 12	at The Citadel*	W, 6-1
Mar. 15	vs. Army^	L, 3-4
Mar. 19	at Georgia Southern*	W, 4-3
Mar. 26	at College of Charleston*	L, 0-7
Mar. 29	Davidson*	W, 4-3
April 5	Furman*	L, 3-4
April 9	at Elon*	L, 0-7
April 10	Chattanooga*	W, 6-1
April 15	Samford*	L, 3-4
April 16	Appalachian State*	L, 2-5
April 20	Davidson!	L, 1-4

^ - in Greenville, SC

\* - Southern Conference match

! - Southern Conference Tournament



## NCAA COMPLIANCE

The importance of following all NCAA rules and regulations is imperative to maintaining the integrity of Wofford College and intercollegiate athletics. We ask all who are associated with the institutions athletics programs to help the College protect the spirit of competition, the athletics eligibility of our student-athletes and the reputation of the College by adhering to the rules and regulations of the NCAA and by contacting the Compliance Office or the NCAA with all questions. If you have any questions about NCAA rules, please contact Elizabeth Rabb at (864) 597-4090, the Wofford website at [woffordterriers.com](http://woffordterriers.com) and click on 'Compliance,' or the NCAA at [www.ncaa.org](http://www.ncaa.org).



## What is a Representative of Athletics Interests (Booster/Donor)?

All alumni, friends, and employees of the College are categorized as 'representatives of athletics interest.' The NCAA stipulates that once an individual has been identified as a 'representative' or "booster/donor" he/she retains this status forever even if the individual is no longer associated with the athletics program. Furthermore the NCAA states that it is possible for a person to be a representative of more than one institution at the same time. A representative of athletics interest may not:

- Contact a prospect's coach, principal or counselor in an effort to evaluate a prospect
- Visit the prospect's institution to pick up film or transcripts
- Contact a prospect, his/her parents, legal guardians or spouse on or off campus
- Contact a prospect by telephone or letter
- Make special arrangements to entertain a recruit
- Provide extra benefits to a prospect, student-athlete or the parents, family and/or guardians of the prospects or student-athletes

**REMEMBER THE #1 RULE: 'ASK BEFORE YOU ACT!'**



# WOFFORD ALL-TIME MEN'S TENNIS ROSTER

**A**

H.S. Ackerman	1930-32
Barton Aiken	1976-79
Tony Alverson	1980-82
D.C. Anderson, Jr.	1936-37
Morgan Armstrong	1973-77
B.M. Asbbill, Jr.	1910-11
Alvin Ashley	1978-79
Ed Atkins	1949-51
Jim Auskel	1961-62
Frank Austell	1955-58

**B**

J. Bailey	1952-55
John Baldwin	1964-66
Kent Ball	2002-04
Michael Barber	2003-06
Chris Barlow	2002-05
Billy Barnwell	1972-73
J.M. Barr	1911-12
Jim Barrett	1975-76
Bill Barrington	1960-61
B. Baston	1952-53
Paul Bartholomy	2007-11
Craig Bauer	1967-69
John Bauknight	1986-87
Charles Baxter	1956-57;58-59
F.C. Beach	1910-11
Johnny Beach	1975-76;77-78
Bill Beleos	1958-60
O.C. Bennett	1911-12
Swift Black	1967-68
H.D. Blackwood	1961-62
F.B. Bomar	1933-34
Erin Borger	1999-00
Dick Bowman	1967-68
Hammond Bowman	2002-03
Bill Boyd	1941-42;46-48
Max Boyle	1968-69
Bill Bradford	1958-59
Gene Breaznell	1965-68
Dee Breeden	1959-60
Brad Brendle	1997-01
Ralph Brendle	1971-72
Forrest Bridges	2005-06;07-08
Preston Brittain	1998-99
Hal Brooks	1978-79
Jim Buchman	1983-84
Jim Buckner	1978-81
Dial Burwell	1998-02
Walt Busbee	1989-93
Barry Butler	1984-88
Alvis Bynum	1957-58
H. Bynum	1950-54
Ryan Byrne	2008-10

**C**

Richard Cahi	2004-08
Buddy Calhoun	1961-62
Mickey Calvin	1958-59
Joel Campbell	1961-62
Jack Cannon	1946-49

Twitty Carpenter	1957-58
William H. Carr	1931-33
R.K. Carson	1913-14
Rodney Champion	1967-68
William Child	1921-25
Gus Chreitzberg	1941-42;46-47
Alpesh Chudasoma	1992-93
Brian Clark	1996-00
Dev Clark	1971-72
E.W. Clay	1935-37
P. Coan	1938-41
Edward Cole	1965-66;67-69
John Coleman	1955-58
Scott Collins	2004-09
Huie Cook	1967-69
Jerry Copes	1958-59
T.E. Crane	1911-12
Jim Craven	1961-62
Clif Crosland	1956-58
Buddy Cubitt	1962-63;64-66
Hamp Culler	1962-66
James Culler	1960-61
Scott Cunningham	1988-91
Frank Cureton	1946-47

**D**

<b>James Daly</b>	<b>2011-</b>
<b>Madison Daly</b>	<b>2011-</b>
R.M. Dantzler	1921-23
Joe Davis	1955-57;58-59
S.G. DeHines	1926-27
B.F. DeShields	1912-13
Clyde DeShields	1912-13
Spence Dixon	1998-99
Alan Donald	2007-11
Dino Drasas	1960-61;62-63
Charles G. Dubose	1933-34
Robert Dunn	1980-81

**E**

Peter Elbaum	2010-11
E.K. Epps	1911-12
J.P. Earle	1914-15
F.R. Ellerbe	1916-17

**F**

<b>Thomas Fanjoy</b>	<b>2010-</b>
Jordan Fanney	2002-03
<b>Elliott Farmer</b>	<b>2008-</b>
Coty Fishburn	1957-58
Barnwell Fishburne	1978-79
H. Floyd	1950-53
H.S. Floyd	1920-23
R.M. Flynn	1938-41
Kirk Fort	1940-41
Charlie Fowler	1960-61;63-67
Darren Foy	1989-92
<b>Joey Francis</b>	<b>2010-</b>
Dane Freeman	1965-67

J.R. Frey	1912-13
Alex Fridzon	2003-07
Michael Furman	2003-04

**G**

<b>Rob Galloway</b>	<b>2011-</b>
Dave Garner	1988-92
F. Garrett	1937-40
D.C. Garvin	1935-38
William Gerry	1960-61
Brad Gibbs	1971-72
Robert Gibb	1997-00
Hoot Gibson	1940-41
Jay Gibson	1980-84
Tom Giudice	1983-87
Jim Glasglow	1971-73
Joe Good	1963-67
F. Goodale	1951-55
A.L. Googe	1912-13
Jim Graham	1963-64
Davis Green	1957-59
Ricky Grier	1974-76
John Griz	1986-87
Pete Guerry	1957-60
R. Guthrie	1950-52;53-54
Walter Guy	1960-61

**H**

<b>George Handy</b>	<b>2011-</b>
Sid Hanes	1979-83
David Hardy	1965-67
S.B. Harper	1928-31
Randall Heffron	2010-11
<b>Walker Heffron</b>	<b>2011-</b>
Fred Henry	1962-63
Elmore Herbert	1941-42
H.W. Herbert	1930-31
T.J. Herbert	1920-21
T.W. Herbert	1937-40
W.C. Herbert, Jr.	1933-35
Jimmy Hillard	1986-87
A. Hoffmeyer	1951-52;53-55
W.M. Holcombe	1920-21;23-25
Barker Hollingsworth	1981-82
R. Holroyd	1937-38
Sam Hopkins	1948-50
Les Hossman	1962-63
C.A. Houck	1937-38
Bruce Howerton	1978-79
H. Hucks, Jr.	1933-34
Will Hudson	1996-98
W. Huff	1951-53
A.L. Humphries	1911-12
T.B. Humphries	1911-13

**J**

Chelsey Jackson	1975-78
Jim Jakes	1967-69
Fred Jayet	1993-97
L.K. Jennings	1907-08

Bob Jeter	1985-87
Brett Johnson	2001-04
Gregory Johnson	1976-79
Jack Johnson	1976-79
Joe Johnson	1957-58
Will Johnson	1998-99;00-01
Oren Judy	1947-49
Trae Judy	1995-96

**K**

<b>Jackson Keith</b>	<b>2011-</b>
Sidney Kelley	1949-53
M. Kelly	1950-51
Whit Kennedy	1947-51
Will Kennedy	1946-47
Hal Kennerly	1971-73
George Kernodle	2005-08
Robert Ketchie	1997-01
JiBob Kilgo	1941-42
R.L. Kilgo	1937-38
Jeff Kim	2005-06
Mike Kimbrell	1968-69;70-71
Harris King	1989-90
John Kirkley	1985-89
Charles Knight	1965-67

**L**

<b>Manoli Lakis</b>	<b>2009-</b>
Sanjuv Lall	1980-81
E.M. Lander	1935-37
<b>Zach Landy</b>	<b>2010-</b>
H. Langford	1911-12
J.R. Langford	1915-16
Peter Larsen	1968-69
Michael Lashley	1987-88;89-90
J.M. Latimer	1930-31
Graham Lawrence	1970-71
Rick Leissner	1971-72
M.H. Lesene	1922-26
Shannon Lewis	1989-93
Frank F. Limehouse, Jr.	1931-32
L. Lindsey	1926-27
Charles Linning	1987-90
B.B. Littlejohn	1920-21
C.B. Littlejohn	1932-33
Mike Love	1967-69
J.B. Loyless	1927-28
Tom Lyles	1968-69
George Lyons	1962-66

**M**

Z. L. Madden	1912-13
Connor Maloy	2010-11
Hunter Maltsberger	2007-08
George Maness	1959-60
Danny Manlow	2008-09
Will Mann	2005-06
Brian Marchant	1991-95
Greg Marini	1987-90
Robert Markham	1975-76
Robert Martin	1993-97



# 2012 WOFFORD MEN'S TENNIS

Rogan Martin	1995-97
Lee Mays	1954-56
Tim McBride	1985-86
John McClain	1985-86
Henry McCormack	1927-28
Lou McCullough	1947-49
Kevin McDonald	1979-80;81-83
Malloy McEachin	1971-72
Jason McElveen	2003-04
Trey McKee	2009-
Ray McLees	1960-62
H.N. McTyiere	1925-26
W.P. Meadors	1909-10
Jason Mengel	2000-03
John Miller	1963-67
J.H. Mitchell	1935-36
J.M. Mobley	1911-12
Boyce Moore	1967-69
Leroy Moore	1912-13
C.E. Morgan	1914-17
Edward Moseley	2000-01
Jim Moseley	1977-79
Danny Mosher	1975-76
W.J. Moss	1912-13
Matthew Moxley	1997-00
Tommy Mull	1958-62
Chip Murchison	1974-75
Jeff Muthig	2003-06

## N

R. Neal	1952-53
W.F. Nettles	1926-28
<b>Rick Newton</b>	<b>2011-</b>
Bill Noblett	1971-72
J.B. Norman	1912-13

## O

Rene Olivier	1997-00
Michael Overbay	1995-96
Phillip Owens	1978-79

## P

Edwin Padgett	1989-90
Ray Palmer	1976-79
Tee Parham	1990-94
Manoj Pariyadath	1994-98
William Parrish	1982-83
Chris Paul	1959-60
E.V. Peele	1930-31
Billy J. Pettis	1931-32
R.M. Phillips	1933-36
James Plaster	1995-96
W.E. Plyler	1912-13
Harry Poole	1972-73
Lee Porter	2000-03
Eddie Porubsky	1990-93
Charles K. Potts	1931-32
Sebastien Preauchat	1996-98
Whiting Preston	1978-82
George W. Price Jr.	1933-34
D.A. Prince	1935-37
S.L. Prince	1906-07

## Q

Derrin Quattes	1928-29
Hunter Quick	1967-69

## R

Johnny Rabb	1979-83
Bobby Randall	1967-69;70-71
Mitti Randhawa	1980-83
Sam S. Rasor	1931-32
Mike Reames	1976-78
Carl Reasonover	1955-57
Joe Reiney	1992-96
C.S. Rhoad	1912-13
Greg Rice	1994-98
John Richardson	1978-79
Chris Rightmyer	1999-00
Billy Ritter	1934-37

## Stuart Robertson 2008-

F.D. Rogers	1935-37
John Roland	1971-75
Dick Rose	1946-47
Garfield Rosengren	1965-69
B.S. Roper	1932-33

## S

Bill Sanders	1968-69
Juan Sandoval	1990-92
Mike Sauvain	1971-72
Michael Schechter	2007-11
Bates Scoggins	1957-58
<b>Jack Seiffert</b>	<b>2010-</b>
Bill Sewell	1970-71
C.C. Shell	1913-14

## Matthew Shemanski 2010-

Ronnie Shoemaker	1958-61
F.H. Shuler	1926-28
J.W. Shuler	1938-41
Brandon Smith	2000-04
Buddy Smith	1957-58
C. Smith	1951-52;53-55
Charles Smith	1968-69
Chip Smith	1968-69;71-72
Chris Smith	1990-94
W.H. Smith	1912-13
Will Smith	1987-91
Todd Smyth	1987-89
Tom N. Snyder	1934-37
David Somers	1982-83;84-86
John Speak	1929-30
John Speake Jr.	1930-31
E.T. Spigner	1912-13
E.B. Stallworth	1912-13
Allan Starnes	1967-68
Scott Stevens	1986-87
Roach Stewart	1940-41
R.W. Stokes	1929-30
Tommy Stokes	1964-67
Wilson Stokes	1927-28
Theron Stone	1946-47
Hunter Strasburger	2003-06
John Stratton	1958-60;61-62
A.J. Strickland	1933-35

Andrew Stubbs	2004-08
Jimmy Stuckey	1958-59
Henry Suber	1962-63
Mike Suggs	1961-62

## Drew Superstein 2009-

## T

Sean Tate	1988-90
Mark Taylor	1972-76
Bonner Thomason	1957-58
Buck Thomason	1934-35
Carter Thomasson	1964-66
R.W. Thompson	1933-34
Wells Tiedeman	1985-87
W.H. Tiller	1912-13
Tim Timmons	1987-89
Curtis Treadway	1959-60
Bowen Truluck	1981-82

## V

## Tinus Van Wyk 2008-

Benjy Varn	1985-89
Bill Vaughn	1946-49

## W

Andy Walker	1973-75
Rogers Walker	1971-72;73-74
Dale Warner	1955-57
Austin Webb	2007-08
J.K. Webb	1932-33
Bill Whaley	1949-50
G.W. Whitaker	1911-12
David White	1971-73
Paul White	1992-96
Luke Whiteside	2007-08
Tommy Wilkes	1955-57
Jim Wilkie	1978-79
Anthony Will	2007-08
J.L. Willcox	1911-12
Christopher Williams	2005-08
Hurry Williams	1941-42
Alec Wilson	2001-04
Ken Winter	1992-93
Brian Wise	1987-90
Robert Wisnewski	1973-77
C.H. Witt	1911-12
Frank Wood	1946-50
<b>Tom Wood</b>	<b>2009-</b>
Tunky Woodham	1955-58
J.M. Wrightson	1937-39

*\*Bold names represent current players*

## HEAD COACHES

1925-26	William Child
1926-28	F.H. Shuler
1928-29	Henry McCormack
1929-30	R.W. Stokes
1931-32	Frank F. Limehouse
1933-37	Professor Kenneth D. Coates
ca 1937	Dr. Albert Stanbury
1938-39	J.E. Ford
1947-49	Jack Cannon
1949-51	Col. Howard D. Balluett
1951-53	A.M. Chreitzberg
1953-55	"Red" Coleman
1955-56	Jim Bailey
1957-58	W.P. Walker
1958-59	C.W. Branch
1959-61	Vernon Caldwell
1961-62	Bill McCarren
1962-67	James E. Seegars, Jr.
1967-68	George Lyons
1968-69	Jerry Cogdell
1969-70	Jack Peterson
1970-75	Mike Bugar
1975-76	Mike Bugar, Jim Newcome
1976-78	Jim Newcome
1978-80	Ed Harris
1980-83	Charles McGinty
1983-85	Declan O'Donoghue
1985-97	Dr. Ben Varn
1997-00	Jim Newcome
2000-	Rod Ray





## THE HUB CITY



The City's origins predate the Revolutionary War. Spartanburg was named for a unit of American Revolution forces called the "Spartan Rifles" who helped defeat the British at the Battle of Cowpens in 1781, under the leadership of General Daniel Morgan.

The town of Spartanburg was incorporated in 1831 and later as a city in 1880 by the 13 Original States and Tennessee. During this time Spartanburg was booming due in large part to the rapidly expanding textile industry.

In the 1870s, Spartanburg became a railroad "hub city," with mainline railroads extending from Magnolia Street depot in all directions, taking passengers and freight to Charleston, Augusta, Atlanta, Asheville, Charlotte and points beyond. As many as 90 trains per day could be seen and heard operating in Spartanburg during the golden age of the American railroad, 1900-20.

During the 1920s, Spartanburg built South Carolina's first municipal airport and claimed the state's first commercial radio station (WSPA). Its leadership in the state was reflected by the election of several residents as governor.

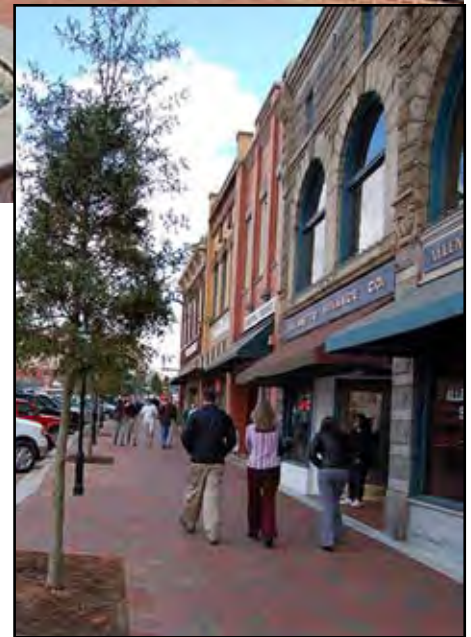
Thousands of U.S. soldiers bound for overseas service in World Wars I and II trained at camps in Spartanburg. The post headquarters for Camp Wadsworth (1917-19) was located at the present site of WestGate Mall, and the Camp Croft (1940-45) was located south of the city. Much of that military reservation has become Croft

State Park.

After World War II, Spartanburg made a concerted effort to promote its location at the junction of Interstates 85 and 26 to international business. One of the greatest successes of this campaign was the development of the BMW manufacturing center near the Greenville-Spartanburg Airport.

Spartanburg's downtown, which always has been anchored by the campuses of Wofford and Converse Colleges, has been undergoing a major revival since the mid-1990s. In addition to the corporate headquarters for Denny's, Advance America, QS-1 and several other companies, the city has acquired a magnificent public library, the Marriott Hotel at Renaissance Park and most recently, the Chapman Arts Center and the USC Upstate George Dean Johnson School of Business. The area surrounding Morgan Square gradually is redeveloping with a variety of interesting restaurants and urban apartment-style housing.

Throughout the 20th century, textile manufacturing companies formed the backbone of the Spartanburg



economy. The most significant of these companies still in operation is internationally respected Milliken & Company.

Blessed by geography and climate as well as by energetic and well-educated citizenry, Spartanburg is emerging as one of the centers of a 21st century metroplex that extends along the South Carolina portion of the I-85 corridor.







## THE SOUTHERN CONFERENCE

The Southern Conference, which began its 91st season of intercollegiate competition in 2011, is a national leader in emphasizing the development of the student-athlete and in helping to build lifelong leaders and role models.

The Southern Conference has been on the forefront of innovation and originality in developing creative solutions to address issues facing intercollegiate athletics. From establishing the first conference basketball tournament (1921), tackling the issue of freshmen eligibility (1922), developing women's championships (1984), to becoming the first conference to install the three-point goal in basketball (1980), the Southern Conference has been a pioneer.

The Southern Conference is the nation's fifth-oldest NCAA Division I collegiate athletic association. Only the Big Ten (1896), the Missouri Valley (1907), the Pacific 10 (1915) and the Southwestern Athletic (1920) conferences are older in terms of origination.

Academic excellence has been a major part of the Southern Conference's tradition. Hundreds of Southern Conference student-athletes have been recognized on Capital One Academic All-America and all-district teams. A total of 19 Rhodes Scholarship winners have been selected from conference institutions.

The Conference currently consists of 12 members in five

states throughout the Southeast and sponsors 19 varsity sports and championships that produce participants for NCAA Division I Championships.

The Southern Conference offices are located in the historic Beaumont Mill in Spartanburg, S.C. A textile mill that was in operation from 1880 until 1999, Beaumont Mill was renovated in 2004 and offers the league meeting areas and offices as well as a library for storage of historical documents.

### MEMBERSHIP HISTORY

On Feb. 25, 1921, representatives from 14 of the Southern Intercollegiate Athletic Association's (SIAA) 30 members met at Atlanta's Piedmont Hotel to establish the Southern Intercollegiate Conference. On hand at the inaugural meeting were officials from Alabama, Alabama Polytechnic Institute (Auburn), Clemson, Georgia, Georgia School of Technology (Georgia Tech), Kentucky, Maryland, Mississippi A&M (Mississippi State), North Carolina, North Carolina State, Tennessee, Virginia, Virginia Polytechnic Institute (Virginia Tech) and Washington & Lee.

Dr. S.V. Sanford of Georgia was chosen as acting chairman and N.W. Dougherty of Tennessee was named secretary. The decision to form a new athletic conference was motivated by the desire to have a workable number of conference games for each



league member. With 30 schools in the SIAA by the early 1920s, it was impossible to play every school at least once during the regular season and many schools went several years between playing some conference members. In addition, in 1920, the SIAA voted down proposed rules that an athlete must be in a college a year before playing on its teams and refused to abolish a rule permitting athletes to play summer baseball for money.

Play began in the fall of 1921 and a year later, six more schools joined the fledgling league including Tulane (which had attended the inaugural meeting but had elected not to join), Florida, Louisiana (LSU), Mississippi, South Carolina and Vanderbilt. VMI joined in 1925 and Duke was added in 1929.

By the 1930s, membership in the Southern Conference had reached 23 schools. C.P. "Sally" Miles of Virginia Tech, president of the Southern Conference, called the annual league meeting to order on Dec. 9, 1932 at the Farragut Hotel in Knoxville, Tenn. Georgia's Dr. Sanford announced that 13 institutions west and south of the Appalachian Mountains were reorganizing as the Southeastern Conference. Members of the new league included Alabama, Alabama Polytechnic Institute, Florida, Georgia, Georgia School of Technology, Kentucky, Louisiana, Mississippi, Mississippi A&M, University of the South, Tennessee, Tulane and Vanderbilt.

According to the minutes of the meeting, Dr. Sanford stated that the division was made along geographical lines. Florida's Dr. J.J. Tigert, acting as spokesman for the withdrawing group, regretted the move but believed it was necessary as the Southern Conference had grown too large. The resignations were accepted and the withdrawing schools formed the new league which began play in 1932.



The Southern Conference office is located in the refurbished Beaumont Mill in Spartanburg, less than a mile from the Wofford campus.





## SOUTHERN CONFERENCE MEMBERS

- Alabama (1921-1932)
- Appalachian State (1971-present)**
- Auburn (1921-1932)
- College of Charleston (1998-present)**
- Chattanooga (1976-present)**
- The Citadel (1936-present)**
- Clemson (1921-1953)
- Davidson (1936-1988, 1991-present)**
- Duke (1928-1953)
- East Carolina (1964-1976)
- East Tennessee State (1978-2005)
- Elon (2003-present)**
- Florida (1922-1932)
- Furman (1936-present)**
- George Washington (1936-1970)
- Georgia (1921-1932)
- Georgia Southern (1991-present)**
- Georgia Tech (1921-1932)
- Kentucky (1921-1932)
- Louisiana State (1922-1932)
- Marshall (1976-1997)
- Maryland (1921-1953)
- Mississippi (1922-1932)
- Mississippi State (1921-1932)
- North Carolina (1921-1953)
- North Carolina at Greensboro (1997-present)**
- North Carolina State (1921-1953)
- Richmond (1936-1976)
- Samford (2008-present)**
- South Carolina (1922-1953)
- Tennessee (1921-1932)
- Tulane (1922-1932)
- University of the South (1922-1932)
- Vanderbilt (1922-1932)
- Virginia (1921-1937)
- VMI (1924-2003)
- Virginia Tech (1921-1965)
- Wake Forest (1936-1953)
- Washington & Lee (1921-1958)
- West Virginia (1950-1968)
- Western Carolina (1976-present)**
- William & Mary (1936-1977)
- Wofford (1997-present)**

Bold indicates current conference member



The Southern Conference continued with membership of 10 institutions including Clemson, Duke, Maryland, North Carolina, North Carolina State, South Carolina, Virginia, VMI, Virginia Tech and Washington & Lee.

The second major shift occurred some 20 years later. By 1952, the Southern Conference included 17 colleges and universities. Another split occurred when seven schools including Clemson, Duke, Maryland, North Carolina, North Carolina State, South Carolina and Wake Forest departed to form the Atlantic Coast Conference which began play in 1953. The revamped Southern Conference included members The Citadel, Davidson, Furman, George Washington, Richmond, VMI, Virginia Tech, Washington & Lee, West Virginia and William & Mary.

Today, the league continues to thrive with a membership that includes 12 institutions and a footprint that spans five states: Tennessee, North Carolina, South Carolina, Alabama and Georgia. Current league members are Appalachian State, College of Charleston, The Citadel, Davidson, Elon, Furman, Georgia Southern, UNC Greensboro, Samford, Chattanooga, Western Carolina and Wofford.

*Wofford won the 2003, 2007 and 2010 SoCon Football Championships.*



### CHAMPIONSHIP HISTORY

The first Southern Conference Championship was the league basketball tournament held in Atlanta in 1922. The Southern Conference Tournament remains the oldest of its kind in college basketball.

The Southern Conference declares champions in 10 men's sports - football, soccer, cross country, basketball, indoor track and field, outdoor track and field, wrestling, baseball, tennis and golf - and nine women's sports - soccer, volleyball, cross country, basketball, indoor track and field, outdoor track & field, tennis, golf and softball.

### FOOTBALL

The Southern Conference has excelled as the premier Football Championship Subdivision (FCS) conference. Southern Conference member Appalachian State won three consecutive FCS titles from 2005-07, becoming the first team to do so. The league boasts more than 250 players who have garnered All-America recognition and numerous national player or coach of the year awards. The conference has had at least one team in the Top 10 of the final FCS poll for 25 consecutive years with



*Wofford won the 2009 Men's Soccer Regular Season and Tournament Championships.*





# 2012 WOFFORD MEN'S TENNIS



2011 WOFFORD ATHLETIC HALL OF FAME INDUCTEES

## PRE-LETTERMAN'S CLUB

Claude S. Finney '29	Football
Ted M. Phelps '69	Football
David Lemmons '66	Track
Warren Whittaker '67	Football
Daniel Lewis '62	Football
William Barbee '60	Basketball
Jerry Richardson '59	Football
Charles Bradshaw '59	Football
Trapier Hart '60	Basketball
George Lyons '65	Basketball
William Ziegler '67	Golf
Donald Williams '67	Football
Harold Chandler '71	Football
Sterling Allen '73	Football
Stan Littlejohn '73	Golf

## POST-LETTERMAN'S CLUB

1979 – Joel Robertson '41	BKB/FB/BB
1979 – C.B. Mooneyham '34	Basketball/Baseball
1979 – P.J. Boatwright '49	Golf
1979 – Elby Hammett '49	Football
1979 – Charlie Seay '48	Basketball
1979 – Phil Dickens	Coach
1980 – Gene Alexander	Coach
1980 – Warren Ariail '49	Trainer
1980 – Lou Bouknight '33	Football
1980 – Aubrey Faust '42	Football/Basketball
1980 – James Neal '53	Basketball
1980 – Bob Prevatte '50	Football
1981 – A.B. Bullington '33	Basketball
1981 – Sammy Sewell '50	Football
1981 – Vernon Quick '51	Football
1981 – Jimmy Hilton '42	Football
1981 – Skip Corn '73	Football/Track
1981 – Conley Nidow	Coach
1982 – William Child '25	Tennis
1982 – Lorine King '51	Football
1982 – Jack Beeler '52	Football
1982 – Bob Pollard '52	Football
1982 – Bill Moody '53	Basketball
1982 – Jim Brakefield	Coach
1983 – Earle Buice	Coach
1983 – Don Fowler '57	Basketball
1983 – Ricky Satterfield '76	Football
1984 – Wally Dean '50	Basketball
1984 – Joe Hazle '55	Football
1984 – Bill Scheerer	Special
1984 – Willie Varner '52	Football/Track
1985 – Jack Abell '54	Football/Basketball
1985 – Clifford Boyd '71	Football
1985 – Philip Clark '50	FB/BKB/BB
1985 – Robert Jordan '71	Football
1986 – Thomas Bower '74	Football
1986 – Fisher DeBerry '60	Coach
1986 – James Gordon '52	Football
1986 – Doug Lowe '75	Basketball
1986 – Harvey Moyer '50	Football
1987 – Coy Gibson '75	Football/Basketball
1987 – George Rice '57	Football
1988 – LeNoid Best '82	Football
1988 – Carter Davis, Jr. '75	Football
1988 – Alfred McGinnis '56	Football
1989 – William Carpenter '58	FB/Basketball

1989 – Frank Ellerbe '18	Baseball
1990 – Thomas McIntyre '56	Baseball
1991 – Sid Allred '70	Football
1991 – Meg Hunt '84	Women's Basketball
1991 – Jim Clary '49	Football
1991 – Bruce Johnson '70	Football
1991 – Eli Sanders '54	Football
1992 – Buddy Hayes '66	Basketball
1992 – Tim Renfrow '83	Football/Baseball
1992 – Ronny Wilson '72	Football
1993 – Vic Lipscomb '70	Golf
1993 – Tori Quick '87	Women's Basketball
1994 – Fred "Skinny" Powers '51	Basketball
1994 – James Blair '83	Basketball
1995 – Pablo De Freitas '87	Soccer
1995 – Judy Nwajaku '90	W. Basketball/VB
1996 – Jimmy Littlefield '69	Basketball
1996 – Robert Mickle '85	Basketball
1997 – Bret Masters '89	Football/Baseball
1997 – Lou McCullough '49	Administrator
1997 – Greg O'Dell '92	Basketball
1998 – Shawn Graves '93	Football
1998 – Clay Griffin '88	Baseball
1999 – Keith Kinard '80	Football
1999 – Justin Laughlin '94	Baseball
1999 – Tony Peay '79	Soccer/Baseball
1999 – Wayne Rice '87	Basketball
1999 – Jason Smoak '93	Golf
2000 – Libby Corry '95	Women's Basketball
2000 – Bud Gault '35	Football/Baseball/Track
2000 – Tim Wallace '83	Baseball
2001 – Louise Maynard '96	Women's Tennis
2001 – Willie Pegram '68	Basketball
2002 – Chad McLain '91	Baseball
2002 – Danny Morrison '75	Athletic Director
2003 – Dan Williams '98	Football
2003 – Bridgid Meadow '98	Women's Soccer
2003 – A.M. Chreitberg 1895	Baseball/Football
2004 – Dr. Sam Black '11	Coach
2004 – Mark Line	Baseball Coach
2005 – Stephon Blanding '90	Men's Basketball
2005 – Brenda Jackson '94	Women's Basketball
2005 – Darrell Brown '86	Men's Golf
2006 – Brian Bodor '01	Football
2006 – Ian Chadwick '01	Men's Basketball
2007 – Bobby Cannon '50	Football
2007 – Seth Chadwick '97	Men's Basketball
2007 – Jenny Nett '02	Women's Basketball
2008 – Travis Wilson '03	Football
2008 – Nathan Fuqua '03	Football
2008 – Michael Lenzly '03	Men's Basketball
2009 – Heidi Best '01	Women's Soccer
2009 – Jimmy Miner '04	Football
2009 – Matt Nelson '04	Football
2009 – Wendy Rohr '04	Women's Tennis
2010 – Lee Basinger '05	Football
2010 – Eric Deutsch '05	Football
2010 – William McGirt '01	Men's Golf
2010 – Ed Wile '73	Football
2011 – Katon Bethay '06	Football/Track and Field
2011 – Adrian Borders '05	Track and Field/Basketball
2011 – Ellen Rogers '06	Women's Tennis

## HONORARY LETTERMAN

Bernard Harrelson	1981
Durwood Hatchell	1981
Dick Hardy	1982
Charles Newcome	1983
John Holliday	1984
Walter Booth	1985
Bobby Ivey	1986
Jesse Davis	1987
Larry Smith	1988
Cleveland Harley	1989
Joe Lesesne	1990
Junie White	1991
Keith Laws	1992
Ray Leonard	1993
James Talley	1994
Ray Henderson	1995
Mack Poole	1995
Talmage Skinner	1996
Ralph Voyles	1997
Lee Hanning	1998
Steve Kana	1999
John Keith, Jr.	1999
Mark Hauser	2000
Greg McKinney	2000
Tom Brown	2001
Pete Yanity	2002
Toccoa Switzer	2003
Bob Pinson	2004
Gordon Orr	2005
Woody Willard '74	2006
Dr. Dan Maultsby '61	2007
Bill Drake	2008
Lucy Quinn '83	2009
Mike Brown '76	2010
Joe Taylor '80	2010
Rob Gregory '64	2011

## DISTINGUISHED SERVICE AWARD

Harry Williams	1993
Bob Pinson	1994
Ron Smith	1995
Jimmy Gibbs	1996
Douglas Joyce	1997
Martha Andrews	1998
Lt. Col. (ret.) Joe Miller	1999
Homozel Mickel Daniel (awarded posthumously)	2000
George Todd	2001
Joe Lesesne	2002
Robert Chapman '49	2003
Roger Milliken	2004
Cleveland Harley '50	2005
Grady Stewart '50	2006
Robbie Atkins '65	2007
Grover Eaker '34 (awarded posthumously)	2008
Eli Sanders '54	2009
Ann Johnson	2010
Craig Phillips	2011



**DR. BENJAMIN DUNLAP**

**PRESIDENT**

Dr. Benjamin Bernard Dunlap took office as Wofford's president in July 2000, becoming only the 10th chief executive in the 150-year history of the Phi Beta Kappa liberal arts college. A native of Columbia, S.C., Dunlap graduated summa cum laude from Sewanee: The University of the South in 1959. He attended Oxford University as a Rhodes Scholar and Harvard University as a graduate student, receiving his Ph.D. in English Language and Literature in 1967. From that year until 1993, he held academic appointments at Harvard and the University of South Carolina, where he was awarded both the USC Teacher of the Year Award and the university's Russell Award for Distinguished Scholarship. During that time, he twice served as a Fulbright Senior Lecturer in Bangkok, Thailand, and Chiang Mai, Thailand, and was also a member of the inaugural class of U.S.-Japan Leadership Fellows in Tokyo. In 1993, he accepted an appointment at Wofford College as the Chapman Family Professor in the Humanities, a position he still holds. In 2000, he became the 10th president of Wofford College.

Dunlap's academic fields include literature, intellectual history, Asian studies, film history and criticism, fiction writing, and the arts. On those subjects and others, especially leadership and higher education, he has lectured and spoken widely in this country and abroad including an appearance as one of "Fifty Remarkable People" at the 2007 TED Conference in Monterey. A frequent moderator for the Aspen Institute's Executive and C.E.O. Seminars as well as its Henry Crown Fellowship and such affiliated programs as the Executive Seminar Asia, the Faculty Seminars at Wye, the Aspen-Rodel Fellowship, the Africa Leadership Initiative, the Central European Leadership Initiative, and the Liberty Fellowship of South Carolina, he has also designed and moderated seminars in Europe, Africa, and the United States for corporate clients as varied as the Netflix Corporation, Young & Rubicam, the Waters Global Forum, the Nova Chemical Corporation, and the Arab Banking Corporation.

Dunlap's many publications include poems, essays, anthologies, guides, and opera libretti as well as two novels in manuscript, *Famous Dogs of the Civil War* and *Sunshine: The Autobiography of a Genius*. As a writer-producer and on-camera talent for public television, he has been a major contributor to more than 200 programs, for which he has won numerous national and international awards, and, for four and a half years in the 1970's and 80's, he performed as soloist and principal dancer for the Columbia City Ballet.

Since 1963, he has been married to Anne Boyd Dunlap. They have three grown children. In 2006, he was awarded an honorary doctorate by his alma mater, Sewanee: The University of the South.



*Dr. Dunlap cheers for the Terriers at the 2010 NCAA Men's Basketball Tournament.*

**RICHARD JOHNSON**

**ATHLETIC DIRECTOR**



Richard Johnson is in his eleventh year as director of athletics at Wofford College. The former head basketball coach has been an instrumental figure on campus for over 25 years.

Johnson officially began his new duties on Dec. 3, 2001. In 17 years as head basketball coach at Wofford (1985-2002), Johnson had a 100 percent graduation rate for all players who completed their eligibility under him. He was the runner-up for SoCon Coach of the Year honors twice in the Terriers' five seasons of league play under him. His 200<sup>th</sup> win was a 79-74 victory at Clemson during the 1999-2000 campaign.

A 1976 graduate of The Citadel, Johnson came to Wofford after serving nine years as a basketball assistant at his alma mater under legendary coach Les Robinson. Johnson also holds an MBA from The Citadel.

During his Wofford coaching tenure, Johnson guided the Terriers from NAIA membership to NCAA Division II in 1988, Division I Independent status in 1995 and the Southern Conference in 1997.

Over the past several years as athletic director, he also has been a driving force behind the development of several facility projects. Russell C. King Field and Switzer Stadium returned baseball to campus in 2003. The Richardson Building was renovated in 2008, while the Joe E. Taylor Athletic Building and a golf practice facility were completed in 2009. Johnson has also been responsible for the growth of the athletic endowment, with a long-term goal of endowing all scholarships in the department.

He currently chairs the Southern Conference's men's basketball committee and is a member of the NCAA's Legislative Council.

Johnson and his wife Carol, have two daughters, Lindsay and Lauren, and a son, Rich. Lindsay is a 2001 Wofford graduate and Lauren graduated from Wofford in 2003. The Johnsons also have three grandchildren. Lindsay and Brad Lowry are the parents of Louisa and Brady Lowry, while Lauren and Reece McWilliams are the parents of Mac McWilliams.

**DR. JAMECIA HILL**

**FACULTY ATHLETIC REPRESENTATIVE**



Dr. Jamecia Hill '88, Professor and Chair of the Chemistry Department, is in her sixth year as the Faculty Athletic Representative (FAR) at Wofford.

Dr. Hill represents Wofford to the National Collegiate Athletic Association and the Southern Conference. She is responsible for certifying the eligibility of student-athletes and assuring integrity in the eligibility process. In addition to supervising athletics policies, the FAR also serves as a liaison between the faculty and the student athletes, looking out for their individual well-being with regard to academics and athletics.

Hill, a native of Due West, S.C. and a member of Phi Beta Kappa, earned her Ph.D. degree in inorganic chemistry at Clemson University, where she was a Graduate Teaching Assistant of the Year. She received Wofford's 1995 Martin Luther King Jr. Humanitarian Award and was also an associate director for a summer science program that was funded by a grant from the Howard Hughes Medical Center.

Hill's interest in athletics has been a lifelong one. Her father was a high school coach, and she participated in many different sports (including being named a SC All-State point guard and playing in the North/South game). As a professor at Wofford and the wife of Jason Hill '89, a former Wofford quarterback and assistant coach, Hill has always supported Terrier athletics. Her daughter Shelby is active in competitive cheerleading (Level 5—Worlds Division), while her son J.L. plays football as well as AAU basketball on a team based in Greenville.

Hill, a 1988 graduate of Wofford, was also a cheerleader for the football and basketball teams as a student.





## **TERRI LEWITT**

### **ASSOCIATE ATHLETIC DIRECTOR FOR DEVELOPMENT / SWA**



Terri Lewitt is in her 27th year as a member of the Wofford athletic department. Lewitt's main duties revolve around the Terrier Club and serving as the Senior Woman Administrator.

She also chairs, along with the Terrier Club president, many of the events and activities administered by the Terrier Club and its board of directors, including the Terrier Ball.

After coming to the college as an administrative assistant in March 1985, Lewitt became the sports information director two months later. In addition to those duties, she was the business and ticket manager for the department. She has also served as the compliance director.

In 2008, she was recognized by the Southern Conference for her role in the growth of women's athletics as the conference celebrated 25 years of women's championships.

Lewitt was promoted to assistant athletic director in 1989 and to associate director in 1996. The Burlington, N.C. native earned her B.A. degree in history from Elon in 1984. Lewitt and her husband, Mark, have two children: Lauren and David.

## **MARK LINE**

### **ASSOCIATE ATHLETIC DIRECTOR FOR INTERNAL OPERATIONS**



Mark Line, Wofford's all-time winningest baseball coach, returned to the Terrier athletic department in July 2003 in the role of associate athletic director for internal operations and sports programs. Among his myriad of duties, Line supervises the Olympic sports while also overseeing the department's budget and serving as liaison to the Carolina Panthers and several on-campus groups and committees.

A 1977 graduate of Erskine, Line posted a 210-158 record (.571) in 10 years as the Terriers baseball coach (1986-95). He received District Coach of the Year honors in his second season as the 1987 squad put together as a 23-11 mark. Wofford then set a single-season school record for victories the following campaign with a 27-12 record. It marked the first time Wofford qualified for postseason play in consecutive seasons. Line's 1991 team established another Terrier mark for wins with a 30-9 record.

Line was selected as a 2004 inductee into Wofford's Athletic Hall of Fame. The first-base dugout at Russell C. King Field, the Terriers' on-campus baseball facility, is named in his honor.

Line has served as chairman of the physical education department since 1988. Following the 1995 season, Line accepted a role as associate dean of students in the Wofford student affairs office. He worked with volunteer services, Bonner Scholars, the campus judicial system and a host of other activities involving campus life.

Line and his wife, Pam, have two children: Alya, a 2010 graduate of Wofford, and Sam, a junior baseball player at Emory and Henry.

## **AL CLARK III**

### **ASSISTANT ATHLETIC DIRECTOR FOR DEVELOPMENT AND MAJOR GIFTS**



Al Clark is in his sixth year on the Wofford staff. For two years, he served as the assistant director of the Terrier Club. In May, 2008, he was promoted to assistant athletic director for development and major gifts. In this role, Clark has responsibility for many of the major fundraising efforts for the athletic department. Included in these efforts are scholarship endowments and facilities, such as the Taylor Center.

He also continues to coordinate the Terrier Club Mini-Tour, a series of golf tournaments held throughout the Southeast that help raise scholarship funds for Wofford student-athletes. Clark worked for five years as a sales executive before joining the Wofford staff in 2007.

Clark is a third generation Wofford football player. His father, Al Clark Jr. '76, and grandfather, Al Clark Sr. '50, preceeded him as Terriers. On the field, Al III was a four-year letterman and was Wofford's Linebacker of the Year in 2000. He was a preseason All-SoCon selection in 2001 and his 79-yard fumble return vs. Middle Tennessee State in 1999 is the second-longest in Wofford history.

A 1996 graduate of Dorman High School, Clark was the team's Defensive Player of the Year as a senior. Clark graduated from Wofford in 2001 with a bachelor of arts in history. He and his wife Jennifer reside in Spartanburg.

## **ANDY KIAH**

### **DIRECTOR OF ATHLETIC FACILITIES**



Andy Kiah is in his 16<sup>th</sup> year on the staff at Wofford and tenth as the director of athletic facilities.

Kiah oversees the maintenance and operation of all athletic facilities, including Gibbs Stadium, the practice fields, the Richardson Building, Snyder Field, Russell C. King Field and the Benjamin Johnson Arena. Wofford's facilities, which are also used by the Carolina Panthers for training camp, have been ranked among the best in the country.

Kiah first came to Wofford as an assistant baseball coach. A 1996 graduate of the University of Massachusetts, Kiah was a four-year letterman for the UMass baseball team. The 1996 Minuteman squad advanced to the NCAA Regionals and was within one game of reaching the College World Series. He was captain of the 1996 team that set a school record with 40 wins.

A native of Brewer, Maine, Kiah holds a bachelor's degree in sports management from the University of Massachusetts. His wife Amy, is head coach of the Wofford women's soccer team. They have two daughters, Kayleigh and Mikenna.

## **LENNY MATHIS**

### **ASSISTANT ATHLETIC DIRECTOR FOR MARKETING AND PROMOTIONS**



Lenny Mathis joined the Wofford staff in 2003 as the assistant athletic director for marketing and promotions.

Mathis came to Wofford after serving as the general manager of the Spartanburg Stingers in the Coastal Plain League, a summer wooden bat baseball league for collegiate players. He directed the Stinger operations in their inaugural 2003 season.

Mathis is a 2000 graduate of the University of South Carolina where he received a degree in sport and entertainment management. Mathis comes from a minor league baseball background. Prior to running the Stingers, he served as the director of ticket operations in 2002 for the Class A Savannah Sand Gnats (an affiliate of the Texas Rangers at the time). He also worked two summers, 1999 and 2000, with the Greenville Braves (then a AA affiliate of the Atlanta Braves). In 2000-01, he served as a marketing representative for the Clemson Tiger Network's radio affiliate in Columbia, SC.

A native of Manning, S.C., Mathis volunteers his time as the media and public relations chairman for the Carolina Miracle League, a baseball league for children with disabilities in Spartanburg County and surrounding areas. He is also a member of the National Association of Collegiate Marketing Administrators (NACMA), co-chair of Spartanburg Young Professionals (SYP) and serves as the president of the "Friends of Duncan Park," a grass roots organization working to preserve Historic Duncan Park Stadium in Spartanburg, South Carolina's oldest baseball park (1926). He and Amanda Ingram were married on May 30, 2009.

## **ELIZABETH RABB**

### **ASSISTANT ATHLETIC DIRECTOR FOR COMPLIANCE**



Elizabeth Rabb is in her eleventh year as a member of the Wofford athletic department. In her current role, she oversees NCAA, Southern Conference and Wofford regulatory issues for all Terrier student-athletes. This includes interpreting NCAA regulations and monitoring recruiting, financial aid and eligibility issues.

In July she ended a three-year term as a member of the NCAA's Administration Cabinet. Rabb will begin serving on the NCAA's Olympic Sports Liaison Committee in September. She has also served as Wofford's ticket manager and cheerleading coach during her tenure at Wofford.

A native of Johnson City, Tenn., Rabb earned a B.A. degree in history from Wofford in 2001. She earned her master's degree from Converse College in December 2007. While an undergraduate, she worked as a student assistant in the athletic department and was a member of both the



cheerleading and dance squads. Rabb also worked as an intern at East Tennessee State and the Southern Conference office.

Rabb and her husband, Marc, were married on June 23, 2007. Marc is the director of media relations at Gardner-Webb University. Their daughter, Ella, was born in June of 2010.

## **BRENT WILLIAMSON** ASSISTANT ATHLETIC DIRECTOR FOR MEDIA RELATIONS



Brent Williamson is in his fifth season at Wofford as Assistant Athletic Director for Media Relations. He joined the Terriers after spending four years as the Assistant Athletic Director for Public Relations at the University of Maine.

He is responsible for the media relations operations for the Wofford College Athletic Department and is the primary contact for football, men's basketball and baseball. He oversees all department publications, news releases and the website.

In four years at Maine, Williamson oversaw the media relations for nineteen sports. He was the primary contact for the men's ice hockey team, which advanced to three NCAA Frozen Fours. He worked with six All-Americans and a Hobey Baker Finalist, along with several current NHL players and two Stanley Cup Champions. At Maine he also oversaw the development and production of a bi-weekly television show, *The Black Bear Insider*, along with other special projects.

Prior to Maine, he spent eight years working in media relations in the National Football League. After two seasons with the Atlanta Falcons, he joined the Jacksonville Jaguars in 1997. In 2002, he was named Director of Media Relations for the Houston Texans. He assisted in the media relations operations at four Super Bowls.

A native of Taylors, S.C., Williamson graduated from Wake Forest University in 1994 with a bachelors degree in history. He added a masters of sports management from the University of Richmond in 1996. His grandfather, W.S. Williamson, graduated from Wofford College in 1932.

## **JUSTIN CROUCH** SPORTS MARKETING/IMG COLLEGE



Justin Crouch is in his first season as the account executive for Wofford Sports Properties and IMG College. In this role, he is responsible for the development of corporate sponsorships for Wofford College. Along with researching prospects and developing proposals, he handles the fulfillment of sponsorship agreements.

Before working at Wofford, he served as a sports travel representative for Young Transportation. He also worked as marketing manager for Sideline Marketing Group. Crouch completed summer internships with the Cincinnati Bengals, UNC Asheville and Carolina Financial Group.

He is a 2008 graduate of the University of North Carolina and earned a MBA in Sports Marketing and Management from the University of North Carolina at Charlotte in December 2010.

## **RUSS BRADLEY** DIRECTOR OF VIDEO SERVICES

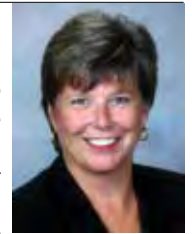


Russ Bradley joined the Wofford staff in July of 2010 as the Director of Video Services. Bradley oversees TerrierVision, and is responsible for video services throughout the athletic department, including the training of students as members of the Video Services Department. He also works with the Wofford College Communications Department on projects.

Bradley came to Wofford after 28 years in television, most recently at WSPA-TV in Spartanburg. Bradley began his television career while still in high school, worked his way through college as a reporter and photographer for his hometown television station, and during his career has covered everything from hurricanes to Super Bowls. He also spent eleven seasons as part of the "Inside Wofford Football" television show crew.

A native of Charleston, SC, Bradley is an alumnus of Leadership South Carolina and Leadership Spartanburg, and attended The Poynter Institute where he completed the Media Leadership program in 2005. Bradley also volunteers his time for several Upstate charities and his local church. He is married to Karen Bradley, executive director of TOTAL Ministries in Spartanburg.

## **SHELBY TAYLOR** TICKET MANAGER



Shelby Taylor is in her sixth year as Wofford's ticket manager. She joined the Terrier staff in 2006 after working as a sales representative for Powers Solutions. In her role, she supervises all ticket operations including season and game day sales. She has also been responsible for the Terriers move to electronic ticketing for football and basketball.

Taylor is a 1982 graduate of the University of South Carolina-Upstate with a bachelor of science degree in administration.

She and her husband David are the parents of a daughter, Meg, a sophomore volleyball player at Gardner-Webb, and a son, Rob.

## **ANN HOPKINS** BUSINESS AND OPERATIONS MANAGER



Ann Hopkins joined the Wofford staff in the summer of 2011 as the business and operations manager. In this role she will oversee budgeting for the athletic department and be the liaison with the business office. She will also work with game operations.

Prior to Wofford, she worked at Wachovia, as well as The Shaw Group in business management and First Colony Corporation as an investment analyst and development coordinator.

Hopkins graduated from Wofford in 2004 with a degree in business economics. While at Wofford she studied abroad at the London School of Economics and in Florence, Italy. She earned a MBA from the McColl School of Business in December 2009. She and her husband, Spencer, reside in Spartanburg.

## **KEVIN YOUNG** ASSISTANT ATHLETIC MEDIA RELATIONS



Kevin Young is in his second season at Wofford as the assistant athletic media relations director. He is the primary contact for the volleyball, women's basketball, men's and women's golf, and men's and women's cross country/track and field teams.

Prior to joining Wofford, he served for two years as the Sports Information Director at Lees-McRae College, where he oversaw the media relations for eighteen sports.

A 2008 graduate of Anderson University with a degree in communications with a concentration in public relations and marketing, he was the assistant sports information director for two years as a student and also worked game operations. He is a native of Lexington, South Carolina.

## **TODD RIEDEL** DIRECTOR OF STRENGTH AND CONDITIONING



Todd Riedel is in his second season at Wofford as the Director of Strength and Conditioning.

Riedel came to Wofford following one year at Missouri State University where he served as the associate director of strength and conditioning, where he headed up the strength and conditioning efforts for the softball, volleyball and men's and women's soccer programs.

Prior to Missouri State, Riedel spent a year at Western Kentucky working directly with football, and conducted programs for soccer, tennis and cheerleading.

Riedel's previous experience was at Colgate University where he assisted with football and was directly responsible for twelve Olympic sports. He also has additional experience as an intern at Xavier, Harvard and West Virginia University.

A native of Cincinnati, Ohio, Riedel graduated from the College of Mount Saint Joseph in 2001 with a bachelor's degree in Physical Education and Health. He also earned a Master of Education in Sports Administration from Xavier University in 2006.

He is a member of numerous professional organizations and is certified by the International Sport Science Association, USA Weightlifting, and has two certifications through National Strength & Conditioning Association. Riedel and his family reside in Spartanburg.





# 2012 WOFFORD MEN'S TENNIS



**RYAN BRIDGES**  
*Media Relations Intern*



**CHARLIE COON**  
*Marketing Intern*



**RYAN FALCK**  
*Strength and Conditioning Intern*



**KENDRA FUNK**  
*Athletic Training Intern*



**CHELSE HILBOURN**  
*Marketing Intern*



**TYLER LAMPERT**  
*Strength and Conditioning Intern*



**JON MANGEL**  
*Strength and Conditioning Assistant*



**DANA MASON**  
*Administrative Assistant*



**ASHLEE REVELL**  
*Athletic Training Intern*



**RON ROBINSON**  
*Chaplain*



**GORDON RODGERS**  
*Office Assistant*



**CAROLINE THOMAS**  
*Administrative Assistant*



**TRAVIS THORNBERRY**  
*Compliance Intern*



**ERIC TOOKER**  
*Strength and Conditioning Intern*



**TRACI WILSON**  
*Administrative Assistant*



**DIAGO YAZAWA**  
*Facilities Intern*





# ATHLETIC FACILITIES



GIBBS STADIUM



BENJAMIN JOHNSON ARENA



RICHARDSON ATHLETIC BUILDING



SNYDER FIELD



RUSSELL C. KING FIELD



JOE E. TAYLOR ATHLETIC CENTER



REEVES TENNIS CENTER



RIFLE RANGE



COUNTRY CLUB OF SPARTANBURG



# 2012 SCHEDULE

<u>DATE</u>	<u>OPPONENT</u>	<u>TIME</u>
1/21	at South Carolina	4:00 p.m.
1/27	at Winthrop	2:00 p.m.
1/31	USC Lancaster	2:30 p.m.
2/4	at Florida Atlantic	12:00 p.m.
2/11	Coastal Carolina	1:00 p.m.
2/16	Presbyterian College	2:30 p.m.
2/19	at UNC Asheville	3:00 p.m.
2/21	at Charlotte	2:30 p.m.
2/28	at Gardner-Webb	2:30 p.m.
3/6	Spartanburg Methodist	3:00 p.m.
3/10	at Samford*	10:00 a.m.
3/15	College of Charleston*	2:30 p.m.
3/17	The Citadel*	1:00 p.m.
3/24	UNC Greensboro*	1:00 p.m.
3/26	Georgia Southern*	1:00 p.m.
3/31	at Chattanooga*	1:00 p.m.
4/1	Elon*	1:00 p.m.
4/4	at Appalachian State*	2:30 p.m.
4/11	at Davidson*	3:00 p.m.
4/14	at Furman*	3:00 p.m.
4/19-22	at Southern Conference Tournament	TBA

\* = SOUTHERN CONFERENCE MATCH

**W**  
WOFFORD