



**From:** Page, Jenni Brickhouse  
/O=WOFFORD COLLEGE/OU=FIRST ADMINISTRATIVE GROUP/CN=RECIPIENTS/CN=PAGEJB  
**Subject:** ID Cards  
**Date:** September 1, 2004 at 1:41 PM  
**To:** Wofford Faculty/Staff (WoffordStaff@Wofford.Int) WoffordStaff@Wofford.Int, Wofford Students (WoffordStudents@Wofford.Int) WoffordStudents@Wofford.Int

---

To: Faculty, Staff and Upperclassmen

If you haven't done so already, please visit the Public Safety Office **as soon as possible** and have your Wofford ID recoded from your social security number to your Banner ID. Your ID card will not work in the dining hall until your card is recoded.



**From:** Page, Jenni Brickhouse  
/O=WOFFORD COLLEGE/OU=FIRST ADMINISTRATIVE GROUP/CN=RECIPIENTS/CN=PAGEJB  
**Subject:** update about ID cards  
**Date:** September 1, 2004 at 2:51 PM  
**To:** Wofford Faculty/Staff (WoffordStaff@Wofford.Int) WoffordStaff@Wofford.Int

---

**To: All Faculty and Staff**

Public Safety will be re-coding ID cards at the opening session Thursday morning. They will also be set up in the Tony White Theatre from 8:00am – 4:00pm Thursday and Friday.

**From:** Page, Jenni Brickhouse  
/O=WOFFORD COLLEGE/OU=FIRST ADMINISTRATIVE GROUP/CN=RECIPIENTS/CN=PAGEJB  
**Subject:** from financial aid  
**Date:** September 2, 2004 at 11:33 AM  
**To:** Wofford Faculty/Staff (WoffordStaff@Wofford.Int) WoffordStaff@Wofford.Int

---



Dear Faculty and Staff,

The Financial Aid Office is trying to assign Federal Work Study students to jobs on-campus. I have now filled all the requests that I have received, but still have many students who are looking for on-campus jobs.

If you have a need for Work Study students and have not already contacted me, please do so immediately at [bastinlg@wofford.edu](mailto:bastinlg@wofford.edu) or 597-4163. I am in the office from 8:00 am until 12:30pm.

I am in the process of sending letters to the students, so I will need to hear from you as soon as possible.

Sincerely,

Lori Bastin  
Student Payroll Coordinator  
Financial Aid Office

**From:** Page, Jenni Brickhouse

/O=WOFFORD COLLEGE/OU=FIRST ADMINISTRATIVE GROUP/CN=RECIPIENTS/CN=PAGEJB 

**Subject:** from Dean Bigger

**Date:** September 2, 2004 at 11:36 AM

**To:** Wofford Faculty/Staff (WoffordStaff@Wofford.Int) WoffordStaff@Wofford.Int

---



Orientation  
2004 F...(2).doc

**From:** Page, Jenni Brickhouse

/O=WOFFORD COLLEGE/OU=FIRST ADMINISTRATIVE GROUP/CN=RECIPIENTS/CN=PAGEJB

**Subject:** from Dr. Dunlap

**Date:** September 2, 2004 at 11:44 AM

**To:** Wofford Faculty/Staff (WoffordStaff@Wofford.Int) WoffordStaff@Wofford.Int

---




All Wofford employees are reminded of the Back to School Picnic to be held this evening, Thursday, September 2, at 6:00 p.m. on the lawn of Burwell Building. In the event of rain, the picnic will be moved inside the Burwell Building.

**From:** Page, Jenni Brickhouse  
/O=WOFFORD COLLEGE/OU=FIRST ADMINISTRATIVE GROUP/CN=RECIPIENTS/CN=PAGEJB ✉  
**Subject:** directory information  
**Date:** September 3, 2004 at 10:04 AM  
**To:** Wofford Faculty/Staff (WoffordStaff@Wofford.Int) WoffordStaff@Wofford.Int



**To All Faculty and Staff:**

Please print out this directory form, fill it out send it to Pat Smith in the Communications Office. You may also fax it to 4219 or email it to <mailto:smithpa@wofford.edu>.

	<b>2004-05 CAMPUS DIRECTORY INFORMATION</b>		
<p>Please complete and return this form to Pat Smith in the Communications Office (CPO J) asap. You may also e-mail your information to <a href="mailto:smithpa@wofford.edu">smithpa@wofford.edu</a>. If additional information is needed, please contact Pat Smith at 597-4183.</p>			
<p>_____ I have reviewed the 2003-04 Directory and my listing is correct as printed.</p>			
<p>_____ I have reviewed the 2003-04 Directory and the following corrections need to be made in my information.</p>			
<p>_____ New listing below.</p>			
<hr/>			
Last Name	First Name	M.I.	Spouse's Name
<hr/>			
Department Name		Your Title	
<hr/>			
Office Location (Bldg.)		CPO#	Campus Phone Number
<hr/>			
E-mail Address		Cell Phone Number (if you want included)	
<hr/>			
Home Address			
<hr/>			
City	State	Zip	
<hr/>			
Home Telephone			

\_\_\_\_\_  
Signature

**From:** Page, Jenni Brickhouse  
/O=WOFFORD COLLEGE/OU=FIRST ADMINISTRATIVE GROUP/CN=RECIPIENTS/CN=PAGEJB  
**Subject:** Daily Announcements  
**Date:** September 3, 2004 at 11:23 AM  
**To:** Wofford Faculty/Staff (WoffordStaff@Wofford.Int) WoffordStaff@Wofford.Int, Wofford Students (WoffordStudents@Wofford.Int)  
WoffordStudents@Wofford.Int



---

**Wofford College Daily Announcements  
Friday, September 3, 2004**

**Parking**

Please remember that no parking is allowed on the campus drive. Vehicles parked on the drive will be ticketed and eventually towed at the owner's expense. Thank you for your cooperation.

**Men's Soccer home opener Monday (full campus - Friday)**

The men's soccer team opens the home slate Monday at 6:00 pm at Snyder Field against Gardner-Webb. The first 200 fans receive a men's soccer poster and magnet compliments of The Real Yellow Pages from BellSouth. Come and see the new and improved Snyder Field with new bleachers, new sealed concrete stands, new sound system and the introduction of a baseball tradition now moving over to soccer..Tropical Shaved Ice.



**From:** Page, Jenni Brickhouse  
/O=WOFFORD COLLEGE/OU=FIRST ADMINISTRATIVE GROUP/CN=RECIPIENTS/CN=PAGEJB  
**Subject:** Daily Announcements  
**Date:** September 6, 2004 at 10:20 AM  
**To:** Wofford Faculty/Staff (WoffordStaff@Wofford.Int) WoffordStaff@Wofford.Int



### **Part-time Job in Athletics**

The Wofford College Athletic Department is seeking a capable and energetic person to serve as Part-time Secretary to the Head Football Coach. The position is Monday through Friday, 8:00 a.m. - noon. Some weekend work will be required.

Duties include: Secretarial support, office management, answering phones, greeting visitors, photocopying, assembling packages, database management and other clerical duties. Computer competency is required, especially in Microsoft Office.

Desired skills include the ability to work independently, communicate well with others, strong organizational skills and strong work ethic.

Resumes will be accepted through close of business, September 13, 2004. Submit resumes to the Wofford College Athletic Department, Richardson Building, and Attention Terri Lewitt.

### **An Invitation**

In honor of Wofford's 150th anniversary, the Spartanburg Regional Museum of History is presenting a special exhibit on college history from Aug. 24 through Oct. 30. The country historical association also is offering a sesquicentennial holiday ornament of the Main Building by Tina Steenerson, available for \$20 in the museum gift shop. The Spartanburg County Regional Museum of History is located at 100 East Main Street. Hours are Tuesday through Saturday, 10 a.m. to 5 p.m. Admission is \$2 for adults and \$1 for students. Children under 5 years of age are free. For more information or to schedule a group tour, call the museum at (864) 596-3501.

### **Kaplan MCAT Course**

For students planning on taking the MCAT in April of 2005:

Kaplan is offering their MCAT prep course here at Wofford starting on January 15. If you're planning on traveling this interim, you can take the first 6 classes in Greenville starting on Oct 9, and then switch into the Wofford class on Feb 9.

In either case, Kaplan offers a \$100 discount if you register in September; you'll have access to their materials as soon as you pay.

Call 800-KAP-TEST for info or to register

### **Public Relations Internships**

Students – if you are interested in a public relations internship in the community (1,2,or 3 credits) during this semester, please contact Linda Powers at ext. 4291 or [PowersL@wofford.edu](mailto:PowersL@wofford.edu).

### **USC Washington Semester Internship Program**

Interested students are invited to meet with Beth Burn from the Institute for Public Service and Policy Research at the University of South Carolina to talk about the USC Washington Semester Internship program, on Tuesday, September 7th, at 11 am in Olin 213.

### **Double Stroller and Maternity Clothes**

Karen Goodchild is interested in donating a double stroller and/or maternity clothes to

Karen Goodchild is interested in donating a double stroller and/or maternity clothes to anyone who might be in need. If you are interested, contact Karen at [goodchildkh@wofford.edu](mailto:goodchildkh@wofford.edu).

**Lost and Found**

Found: a ring in ladies room in Olin on Sept. 3. Please see Olin switchboard to claim.

**From:** Page, Jenni Brickhouse  
/O=WOFFORD COLLEGE/OU=FIRST ADMINISTRATIVE GROUP/CN=RECIPIENTS/CN=PAGEJB  
**Subject:** Daily Announcements  
**Date:** September 7, 2004 at 9:40 AM  
**To:** Wofford Faculty/Staff (WoffordStaff@Wofford.Int) WoffordStaff@Wofford.Int, Wofford Students (WoffordStudents@Wofford.Int) WoffordStudents@Wofford.Int



### **Campus Drive**

The public safety office requests that anyone with a vehicle parked on the Campus Drive move it **immediately**. After today (Tuesday) any vehicles parked on the Campus Drive will be towed.

Campus Drive will close from 3:30 pm until 7:00 pm on Thursday September 9, 2004. The road will be closed in order to facilitate the College Fair and Cookout. The road will reopen at 7:00 pm.

### **Fall Arts/Events Poster**

At the suggestion and request of President Dunlap, the Communications Office is preparing a fall arts/events poster – functional, but colorful and eye-catching – to promote performances, exhibitions, special programs, etc.

We need to be sure we have all of the applicable events so we can have a complete schedule of our interesting and entertaining performances and events on campus this fall. Some events have been submitted and appear on the Wofford On-Line Calendar. We will gather that information, but if your event is not on there or the information is incomplete, we need you to provide that information immediately.

We are on a very short deadline. We **MUST** have your information – name of the event, date, time, location, a brief description, contact person/number – **no later than noon on Wednesday, September 8** so that we can design the poster and get it to the printer. We must be able to distribute the poster by Friday, September 17, so this deadline is important and **FIRM**.

Email Laura Corbin at [laura.corbin@wofford.edu](mailto:laura.corbin@wofford.edu).

### **Kaplan MCAT Scholarship**

If you're planning on taking the April MCAT, and would like to take the KAPLAN prep course but would have difficulty paying for it, we have one \$1339 scholarship to award, bringing the cost from \$1449 down to just \$100. The scholarship is awarded based upon NEED [although a 3.0 GPA is also required]. If you'd like to be considered for the scholarship, please email Dr. Moss at [mossre@wofford.edu](mailto:mossre@wofford.edu) by SEPTEMBER 18. Applicants will be notified of the decision by September 24.

### **New Acorn Café Hours**

The Acorn Cafe in the Milliken Science Center is now open until 5pm in the afternoons. Please drop by for a refreshing drink and enjoy the beautiful setting.

### **Holy Communion**

Holy Communion every Tuesday, 5:15pm in Mickel Chapel, located on the 1st floor of Main Building.

### **All Sophomores, Juniors, and Seniors:**

If you are planning to major in either Economics or Business Economics, you must declare

If you are planning to major in either Economics or Business Economics, you must declare your major with Dr. McArthur (Main 329) in September. Absolutely no declarations will be accepted in October.

### **Wofford Theatre Workshop**

Auditions for the Wofford Theatre Workshop's production of Euripides' *The Trojan Women* will be Tuesday, September 7 and Wednesday, September 8 at 7:30 in the Tony White Theater, located in the Campus Life Building. There will also be an interesting meeting at 6:00 on Tuesday, so please come to see the theatre and staff even if you are unsure about auditioning. Anyone who wants to work behind the scenes on lighting, costuming or set design is also welcome to attend.

### **New Bus Pass Opens the City to the Wofford Community**

From September 6th, 2004 through October 6th, 2004, all Wofford students, faculty, and staff are invited to ride the Sparta Bus system at no cost. Showing the driver your Wofford ID Card will give you access to any bus route in the city during this time period. Sparta will document Wofford passengers to determine our ridership and interest in mass transportation as a community. Please use this opportunity to travel throughout the city. This may be an excellent alternative for group transportation and responsible fuel use. Literature on standard city routes is available in the Burwell Building and in Student Affairs.

A direct shuttle will also connect the campus to the Wofford Suites at Skylyn Place. A shuttle will run constantly from 7:00 a.m. - 12:00 midnight Monday through Thursday. The Friday shuttle will run from 7:00 a.m. until 2:00 a.m. on Saturday morning. Other weekend times will be considered based on demand. This shuttle will stop at the following locations on Campus Drive: the Burwell Building, Main Building, and the Library. Please use this bus to visit our community at Skylyn Place. Please contact Kris Neely or Roberta Bigger at 4040, if you have any questions. Thank you.

From: Page, Jenni Brickhouse

/O=WOFFORD COLLEGE/OU=FIRST ADMINISTRATIVE GROUP/CN=RECIPIENTS/CN=PAGEJB

Subject: Daily Announcements

Date: September 8, 2004 at 10:03 AM

To: Wofford Faculty/Staff (WoffordStaff@Wofford.Int) WoffordStaff@Wofford.Int

Cc: sburgpsa1@bellsouth.net, J. R. Gross (jrgplu@webtv.net) jrgplu@webtv.net, Betsy Mcgehee (betsymcgehee@yahoo.com) betsymcgehee@yahoo.com

JP

### **Message from the President's Office**

Opening Convocation will take place at 11:00 a.m. on Thursday, September 9, in Leonard Auditorium. Dr. Eric L. Motley, Special Assistant to the President and Associate Director of Presidential Personnel at The White House, will present the convocation address. The formal opening convocation is a special occasion in the academic year. The faculty will march in full academic regalia. All students, faculty, staff, and friends of the College are invited and encouraged to attend.

### **Picnic Thursday**

Thursday Dinner will be served in front of Main Building from 4:45 – 7:00 after the Interest Fair.

### **The Acorn Cafe**

The Acorn Cafe in the Milliken Science Center is now open until 5pm in the afternoons. Please drop by for a refreshing drink and enjoy the beautiful setting.

### **Essentials of Winemaking at Rockhouse Vineyards hosted by The American Chemical Society**

Everyone is invited to join ACS for a dinner, wine tasting, and lecture on wine making. Cost is \$12.25 for students. This event is on Wednesday, September 15 at 6:30 pm. We will leave Wofford at 5:15 pm to depart to Hendersonville. Anyone interested please contact Trevor Hray at [hraya@wofford.edu](mailto:hraya@wofford.edu). Reservations must be made by this Friday at 2:00 pm.

### **Musical Theatre at Wofford**

"Tragedy tomorrow, comedy tonight!"

The Wofford Theatre Workshop, in cooperation with the Wofford Music Department, proudly announces the Interim production of Stephen Sondheim's classic musical comedy *A Funny Thing Happened on the Way to the Forum*. Broadway's greatest farce is light, fast-paced, witty, irreverent and one of the funniest musicals ever written. *A Funny Thing Happened on the Way to the Forum* takes comedy back to its roots, combining situations from time-tested, 2000 year old comedies of Roman playwright Plautus with the infectious energy of classic vaudeville. The result is non-stop hilarity in which a crafty slave (Pseudolus) struggles to win the hand of a beautiful but slow-witted courtesan (Philia) for his young master (Hero), in exchange for freedom.

With its unforgettable zany characters, a hysterical, perfectly constructed book by Larry Gelbart (of "MASH" and "City Of Angels" fame) and Burt Shevelove, and witty Stephen Sondheim songs which are reasonable in their vocal demands, *A Funny Thing Happened on the Way to the Forum* allows a brilliant ensemble of comedic actors to shine.

### **Ice Cream Sundae and Karaoke Night at PSA**

Join us at the Presbyterian Student Association at 8 PM on Wednesday, Sept. 8th, for Ice Cream, Karaoke, and lots of fun. The PSA house is located directly across the street through the front gates, to the left of 2nd Presbyterian Church. If you have any questions: 582-5600 or [Sburgpsa1@bellsouth.net](mailto:Sburgpsa1@bellsouth.net)

### **Lost and Found**

Lost: A dark purple wallet was lost Sept. 7th (most likely in Old Main). Please call extension 5475 if you have any information.

**From:** Page, Jenni Brickhouse  
/O=WOFFORD COLLEGE/OU=FIRST ADMINISTRATIVE GROUP/CN=RECIPIENTS/CN=PAGEJB  
**Subject:** Daily Announcements  
**Date:** September 9, 2004 at 10:53 AM  
**To:** Wofford Faculty/Staff (WoffordStaff@Wofford.Int) WoffordStaff@Wofford.Int, Wofford Students (WoffordStudents@Wofford.Int) WoffordStudents@Wofford.Int



---

### **WAC Back-to-School Bash**

The Wofford Activities Council (W.A.C.) invites all Wofford students to join them tonight, Thursday, September 9th, for the W.A.C. Back to School Bash starting at 8pm in front of Old Main. There will be plenty of free food and drinks for everyone, and this is a great chance to meet all of our fall sports teams, Campus Union officers, and W.A.C. members, along with other new faces! We look forward to seeing you tonight!

### **Sorority Recruitment**

All freshmen females or non-Greek upperclassmen females interested in participating in this fall's Recruitment will need to register online at <http://www.wofford.edu/greekLife/PanhellenicRecruitment/default.asp>. The deadline to sign up for Recruitment is this Friday, September 10th and the registration fee is \$55. If you have any questions regarding Recruitment, you may contact the Panhellenic Recruitment Chair, Lacey Hilliard at [hilliardld@wofford.edu](mailto:hilliardld@wofford.edu).

### **College Fest**

Tickets for College Fest are now available in the Office of Student Affairs. The cost is \$10 a ticket payable by check or cash. Stop by the Office of Student Affairs or call extension 4040.

### **Lost and Found**

Lost: small gray phone (it's not a flip phone), and the power is off right now. I either lost it in Milliken in room 201 or 321 or in Burwell. Please call extension 5411 or email [sassorr@wofford.edu](mailto:sassorr@wofford.edu).

**From:** Page, Jenni Brickhouse

/O=WOFFORD COLLEGE/OU=FIRST ADMINISTRATIVE GROUP/CN=RECIPIENTS/CN=PAGEJB

**Subject:** Interim Information

**Date:** September 9, 2004 at 1:07 PM

**To:** Wofford Faculty/Staff (WoffordStaff@Wofford.Int) WoffordStaff@Wofford.Int, Wofford Students (WoffordStudents@Wofford.Int) WoffordStudents@Wofford.Int

JP

---

### **Proposals for Independent Interim Projects**

Students proposing Independent Interim projects should select a faculty sponsor to discuss the proposal. The deadline for submitting a proposal is October 1.

### **Interim Travel Grants**

Students who wish to receive travel grants for interim are encouraged to apply to the Lesesne Travel Grants (deadline September 15) [www.wofford.edu/studyAbroad/lesesneTravelGrant.asp](http://www.wofford.edu/studyAbroad/lesesneTravelGrant.asp) and the Gilman Scholarships (deadline September 22) [www.iie.org/programs/gilman/index.html](http://www.iie.org/programs/gilman/index.html)



**From:** Page, Jenni Brickhouse  
/O=WOFFORD COLLEGE/OU=FIRST ADMINISTRATIVE GROUP/CN=RECIPIENTS/CN=PAGEJB  
**Subject:** Daily Announcements  
**Date:** September 10, 2004 at 9:50 AM  
**To:** Wofford Faculty/Staff (WoffordStaff@Wofford.Int) WoffordStaff@Wofford.Int, Wofford Students (WoffordStudents@Wofford.Int) WoffordStudents@Wofford.Int



---

### **Tickets for College Fest**

Tickets for College Fest are now available in the Office of Student Affairs. The cost is \$10 a ticket payable by check or cash. Stop by the Office of Student Affairs or call extension 4040.

-

### **Last Chance To Sign Up For Sorority Recruitment**

Today is the deadline to sign up for Recruitment. Any freshmen females and non-Greek upperclassmen females interested in Recruitment will need to register online at <http://www.wofford.edu/greekLife/PanhellenicRecruitment/default.asp>. If you have any questions regarding Recruitment, you may contact the Panhellenic Recruitment Chair, Lacey Hilliard at <mailto:hilliardld@wofford.edu>.

### **W.A.C.-Tell Us What You Think**

Thanks to everyone who turned out for last night's W.A.C. Back To School Bash. It is very important for this committee to hear back from Wofford students so we encourage you to take a minute and fill out our two minute survey online at <http://www.wofford.edu/socialLife/formWAC.asp>.

### **Take a first week study break and join us at the Game!**

Today is your last chance to sign up for a ride and tailgate at the Wofford vs. South Carolina State game. Please see Aja Russell, Jai-Sheena Garnett, or Landa Foxworth at Burwell or Zach's during lunch today. There are 25 seats available, so hurry and sign up. You don't want to miss your nationally ranked Terriers as they open the season in Orangeburg against a tuff SC State football team. Remember, all you pay for is your game ticket (\$15) and if you are so inclined give a \$5 donation to help with the cost of transportation. We will feed you at the stadium! For more information contact Mr. Darrin Goss at 597-4043 or [gossd@wofford.edu](mailto:gossd@wofford.edu).

### **Fraternity Rush**

All freshmen males or non-Greek upperclassmen males interested in participating in this fall's Rush will need to register online at <http://www.wofford.edu/greekLife/Rush/default.asp>. The registration fee is \$35 until today, September 10th. After this date the registration fee increases to \$45 and the deadline is next Friday, September 17th. IFC will be hosting a cook-out at fraternity row next Tuesday, September 14th at 5pm. All potential rushees are encouraged to attend as all of the fraternity men will be in attendance. If you have any questions regarding Rush, you may contact the IFC Rush Chairman, Claude Prevost, at [prevostct@wofford.edu](mailto:prevostct@wofford.edu).

-

### **Dance Team Interest Meeting**

Any students interested in trying out for the 2004-05 Dance Team will need to attend an interest meeting today (Friday, September 10th) at 2:30pm in the aerobics room of the Richardson Building. If you have any questions or conflicts, please contact Heather Morrow at [morrowhi@wofford.edu](mailto:morrowhi@wofford.edu).

from [jeffrey@wofford.edu](mailto:jeffrey@wofford.edu).

### **The Old Gold and Black campus newspaper needs your help!**

In each issue, we are planning to include at least one editorial, a "Dear Dr. Jeffrey" letter and cartoons. If you have an issue about which you would like to speak out, please write an editorial up to 500 words long. If you have a troubling personal problem, write anonymously to the wise Dr. Jeffrey and he will help you solve it. If you are creative and artistic, we would love to include your cartoons. (You will receive \$15 for each used entry). To turn in an editorial or cartoons, please contact Roxana Opris or Kristin Sams at [oprisra@wofford.edu](mailto:oprisra@wofford.edu) or [samske@wofford.edu](mailto:samske@wofford.edu). To write Dr. Jeffrey, email him at [jeffreycr@wofford.edu](mailto:jeffreycr@wofford.edu) or call him at 4581.

We also need writers, so if you like to write, please contact Roxana or Kristin. You will receive \$15 for each used article.

### **Sunday Worship**

Sunday Worship will be September 12, 11:00 a.m. in Leonard Auditorium.

### **Intramural Student Assistants Needed**

I am looking for a couple of people interested in working with the intramural department as student assistants. You must be available to work Monday through Thursday mostly in the afternoons. The primary responsibility is to supervise the events and make sure that the necessary referees are present to do the officiating. Anyone interested should send me an email with your phone number(s) and best time to contact and I will get back in touch with you. I am also looking for people who are interested in being officials. We will be starting up Terrier Tag very soon and soccer will be later in the semester. I will need some officials interested in working for one or both of these upcoming seasons. Brandon McKillop [mckillopbs@wofford.edu](mailto:mckillopbs@wofford.edu)

### **Every Monday Is Wade's College Day!**

Wade's, Spartanburg's most popular restaurant since 1947, is now offering college students **3 meal choices** for **\$5.00 on Monday** (tax included).

The choices include Fried Chicken or Hamburger Steak, with 2 vegetables or a 4 Vegetable Plate. Every meal comes with bread and tea at no extra charge.

*(Must show College ID—Good all day every Monday)*

*Dine In or Take Out—Toppings and Additional Toppings are Extra)*

*(Starting September 13, 2004)*

### **Movie Madness Tonight**

The Office of Student Affairs, as an extended part of orientation will be showing *The Ladykillers* for Movie Madness tonight (Friday) at 9 PM in McMillan Theater. Snacks and drinks will be provided and seating is limited, so arrive early for a good seat.

### **Table Française**

Table Française will meet again twice a month on Tuesdays from 12 to 1. Anyone, faculty or students, wishing to speak French or just to listen is welcome to join us for lunch.

Here are the places and dates for the meetings of the fall semester:

Sept. 14th: President's Dining Room

Sept. 28: President's Dining Room

Oct. 12: President's Dining Room

Oct. 26: President's Dining Room

Nov. 9: Dean's Dining Room

Nov. 23: Dean's Dining Room

Dec. 7<sup>7</sup>: Dean's Dining Room

### **Proctors Needed**

The Instrumentation Systems & Automation Society needs a proctor for tests to be given at BASF in Spartanburg on October 1. The pay is \$100 and is a day-long commitment.

This is not a job for students. If anyone is interested, call (4260) or come by Kay Vipperman's office in Burwell for form.

### **Internship Information from Career Services**

There are two to three interim internship opportunities at TBS-TV headquarters in Atlanta. The internships are in Atlanta but are tied to the station's Latin American operations. This internship is hosted by a Wofford alumnus. For details, please call (4262) or email [leahymk@wofford.edu](mailto:leahymk@wofford.edu) Marianna Leahy.

**From:** Page, Jenni Brickhouse  
/O=WOFFORD COLLEGE/OU=FIRST ADMINISTRATIVE GROUP/CN=RECIPIENTS/CN=PAGEJB  
**Subject:** Daily Announcements  
**Date:** September 13, 2004 at 2:20 PM  
**To:** Wofford Faculty/Staff (WoffordStaff@Wofford.Int) WoffordStaff@Wofford.Int, Wofford Students (WoffordStudents@Wofford.Int) WoffordStudents@Wofford.Int



### **Remembering Dr. Cobb**

Interested students and faculty are invited to meet with Chaplain Robinson next Tuesday, September 14, at 11 AM in the Papadopoulos Room to plan campus-wide events in memory of Dr. Cobb. Dr. Robinson is coordinating official celebrations and remembrances.

### **Holy Communion**

Holy Communion is observed every Tuesday at 5:15 p.m., Mickel Chapel. Everyone is welcome.

### **Wesley Fellowship**

Wesley Fellowship will have Ice Cream Sundaes on Tuesday, September 14 at 5:45 p.m. in AAAS Lounge. Get your tray in Burwell and come on down and join us.

### **St. Andrews University Meeting**

Any students interested in studying at St. Andrews University in Scotland are encouraged to attend an informational meeting on Wednesday, Sept. 15 at 1:30pm in the Office of Programs Abroad in DuPré Administration with university representative Stephen Magee.

### **Interim Travel Grants**

Reminder that Wednesday, Sept. 15 is the deadline for Lesesne and all other interim travel grants. All application should be turned in to Amy Lancaster in the Office of Programs Abroad in Dupre Administration by 5pm.

### **Clinical Internships Interim**

Please note that Dr. Moss' Clinical Internships in Healthcare interim registers early with the travel interims on Sept. 28. Mandatory information meetings are on September 21. See <http://www.wofford.edu/interim/infoSessions.asp> for time and location.

### **Souljahs for Christ**

Souljahs for Christ was established to reach out to the students of Wofford College and to share the gospel of Jesus Christ. It is also here to encourage others through the testimonies of peers, and to grow stronger in faith by reading and studying God's word. Our doors are open to all, it doesn't matter your background or what you're dealing with. The meeting is this Wednesday, September 15 @ 6:00pm in the Holcombe Room located at the bottom of Burwell. You are welcome to bring your dinner down also.

### **Association for Computing Machinery**

The Wofford Chapter of the Association for Computing Machinery is holding its first meeting of the semester on Tuesday, September 14 at 2:30 P.M. in the Olin Building Student Lounge (Room 202). The agenda includes setting goals for this year and getting ready for the two programming contests we will participate in this fall. All who are

ready for the live programming sessions. We will participate in this fall. All those are interested in computing are welcome.

### **Students, Faculty & Staff Welcome**

Monday, September 20, 5:30-7:00 pm. Bring your dinner down to the AAAS room. The seminar will begin with brief (10 minute) introductions to the biology of stem cells and to the ethical and religious issues by Prof. Moss, Prof. Kay, and Rev. Robinson followed by an open discussion moderated by Kris Neely. To reserve a space, contact Dr. Moss at [mossre@wofford.edu](mailto:mossre@wofford.edu). Please include your name, and whether or not you're on the Wofford meal plan.

### **Fraternity Rush**

All freshmen males or non-Greek upperclassmen males interested in participating in this fall's Rush will need to register online at <http://www.wofford.edu/greekLife/Rush/default.asp>. The registration fee is \$45 and the deadline is this Friday, September 17th. The registration fee can be paid by check or cash in the Student Affairs office as well as online. IFC will be hosting a cook-out at fraternity row this Tuesday, September 14th at 5pm. All potential rushees are encouraged to attend as all of the fraternity men will be in attendance. If you have any questions regarding Rush, you may contact the IFC Rush Chairman, Claude Prevost, at [prevostct@wofford.edu](mailto:prevostct@wofford.edu) or the IFC President, Trey Whitmire, at [whitmireww@wofford.edu](mailto:whitmireww@wofford.edu).

### **Amnesty International**

Amnesty International, a world-wide human rights campaign, has an informational meeting Monday, September 13th at 5:30 in player's corner. This amazing organization is responsible for the release of many prisoners of conscience all around the world. Everyone interested is more than welcome! If you can't make it or have more questions contact Laura Vaughn, [Vaughnlis@wofford.edu](mailto:Vaughnlis@wofford.edu) or ext. 5320.

### **From Career Services**

Wachovia Bank will hold interviews on Wednesday, October 13 for analyst positions. The salary for these positions is the highest for any company recruiting at Wofford this year. Wachovia will consider all majors providing you have an overall GPA of 3.2 and have 18 credit hours of finance coursework. Deadline for submission of resume to Career Services is Thursday, September 23.

### **Join the College Bowl Team!**

The Wofford College Bowl Team, our academic quiz team, will have a brief organizational meeting on Monday, September 13 at 4pm in Main 226 to decide on regular meeting times and dates. If you'd like to play College Bowl and can't make the meeting, please e-mail Dr. Grinnell [grinnellns@wofford.edu](mailto:grinnellns@wofford.edu) or Dr. Byrnes [byrnesms@wofford.edu](mailto:byrnesms@wofford.edu). If you have questions about the team in general, contact team captains Benjamin Ingram [ingrambw@wofford.edu](mailto:ingrambw@wofford.edu) or Catherine England [englandcc@wofford.edu](mailto:englandcc@wofford.edu).

### **Men's Soccer at home tomorrow**

The Terrier men's soccer team returns home tomorrow at 6:00 pm to face the Limestone Saints at Snyder Field. A reminder that the Tropical Shaved Ice stand will be open from 5:30 until the game ends. The Tropical Shaved Ice stand is located beneath the Snyder

Field stands. Also, be sure to pick up your Wofford men's soccer magnets and schedule posters compliments of the Real Yellow Pages from BellSouth at the Shaved Ice stand as well.



**From:** Page, Jenni Brickhouse  
/O=WOFFORD COLLEGE/OU=FIRST ADMINISTRATIVE GROUP/CN=RECIPIENTS/CN=PAGEJB  
**Subject:** from IT  
**Date:** September 13, 2004 at 2:22 PM  
**To:** Wofford Faculty/Staff (WoffordStaff@Wofford.Int) WoffordStaff@Wofford.Int

---

**Faculty/Staff**

If you are moving and need sturdy cardboard boxes, decent size, please contact Watts Hudgins, X 4272.

**From:** Page, Jenni Brickhouse  
/O=WOFFORD COLLEGE/OU=FIRST ADMINISTRATIVE GROUP/CN=RECIPIENTS/CN=PAGEJB  
**Subject:** Daily Announcements  
**Date:** September 14, 2004 at 9:39 AM  
**To:** Wofford Faculty/Staff (WoffordStaff@Wofford.Int) WoffordStaff@Wofford.Int, Wofford Students (WoffordStudents@Wofford.Int) WoffordStudents@Wofford.Int

JP

### **Campus Union Contest**

Campus Union is sponsoring a contest to give an appropriate name to the new multi-purpose bookstore that will be located in the former location of Wayside Gardens. All participants are asked to email Josh Whitley at whitleyjs@wofford.edu by Friday at 2:00 PM. If your entry is used as the new name for the Wofford College Bookstore, you will receive \$50 of Terrier Bucks.

### **Interim Discussion**

Dean Ana Maria Wiseman will be speaking to all new students at 11:00 am today in Leonard Auditorium. The purpose of this program is to explain our Interim program.

### **Rotaract and Share Your Life**

Register for Organ Donation the Wofford College Rotaract Club will be working with the Share Your Life - Give of Your Self organ donation registry program to raise awareness about the importance of organ donation. Share Your Life is a joint project between Rotary International and the World Living Bank to register potential donors--once registered that information will then be accessible by health care systems nationwide. Anyone wishing to register or simply learn more about organ donation can come to the booth on Burwell landing during dinner on Tuesday and Wednesday of this week from 4-6 p.m. You can also e-mail [debuskjt@wofford.edu](mailto:debuskjt@wofford.edu) or attend the Rotaract Meeting this Thursday during lunch in the AAAS room downstairs in Burwell.

### **Facilities Forum**

Campus Union's Facilities Committee is sponsoring a Facilities Forum this Thursday, September 16th at 11am in McMillan Theater. Students are encouraged to attend and ask questions or raise concerns to the forum panel including Aramark supervisors Sam Walker and Amy Bell, Director of Residence Life Kris Neely, Director of Physical Plant Tom Rocks, Assistant Director of Physical Plant Bill Littlefield, Vice-President of Information Technology Dr. David Whisnant, and Director of Public Safety Lee Sartor. Don't just complain, come and ask questions and see changes happen.

### **Stem Cell Research Forum**

Students, faculty & staff are welcome Monday, September 20, 5:30-7:00 pm. Bring your dinner down to the AAAS room. The seminar will begin with brief (10 minute) introductions to the biology of stem cells and to the ethical and religious issues by Prof. Moss, Prof. Kay, and Rev. Robinson followed by an open discussion moderated by Kris Neely. To reserve a space, contact Dr. Moss at [mossre@wofford.edu](mailto:mossre@wofford.edu). Please include your name, and whether or not you're on the Wofford meal plan.

### **Micah 6**

Do you like to work with kids? Se habla Espanol? Micah 6 is an after school program for children in Kindergarten to 2nd Grade. We are looking for volunteers who like to work with kids through tutoring and fun activities. We are also interested in students who



...that has enough tutoring and fun activities. We are also interested in students who speak (or would like to work on) Spanish because many of the children's first language is Spanish. Come to the interest meeting to learn more about Micah 6 and enjoy a smoothie at Player's Corner today (Tuesday, September 14th) at 3 pm.

### **Wofford Ambassadors**

There will be an organizational meeting for any freshmen interested in Wofford Ambassadors on Thursday, Sept. 16th at 11:00am in the Papadopoulos room. The Ambassadors work closely with the Admissions Office by giving bi-weekly and group tours, hosting overnights, and assisting with campus visitation days. Please contact Jenni Lister at [lijerjl@wofford.edu](mailto:lijerjl@wofford.edu) or 4135 with any questions.

### **Lost and Found**

Lost: A set of keys was lost sometime on Thursday or Friday. The keychain says 'BAIRD' on it. If found, please contact Josh Baird at [bairdmj@wofford.edu](mailto:bairdmj@wofford.edu).

**From:** Page, Jenni Brickhouse  
/O=WOFFORD COLLEGE/OU=FIRST ADMINISTRATIVE GROUP/CN=RECIPIENTS/CN=PAGEJB ✉  
**Subject:** from Human Resources  
**Date:** September 14, 2004 at 9:40 AM  
**To:** Wofford Faculty/Staff (WoffordStaff@Wofford.Int) WoffordStaff@Wofford.Int

---



Financial Ed.  
Semina...04.doc

# You're invited!



## TIAA-CREF announces a Financial Education Seminar at WOFFORD COLLEGE

### Planning for Retirement and Other Goals

Retirement plans are probably one of the most important employee benefits, and TIAA-CREF can help you make sense of it all. We'll provide an overview of how they work, the advantages of tax-deferred saving and investing for retirement. We'll also discuss investment strategies, including helpful products and services that can assist you in achieving your goals.

We'll discuss:

- Wofford College Plan provisions
- How to save on taxes while saving for retirement
- Tax-deferred annuity program
- Strategies to consider when allocating your funds between TIAA and CREF

#### Date

---

Tuesday, September 21, 2004

---

#### Time

---

11:00 a.m. to 12:00 p.m. and 2:30 p.m. to 3:30 p.m.

---

#### Location

---

Olin Theatre

---

---

TIAA-CREF does not offer tax advice. See your tax advisor regarding your particular situation.

---

**You should consider the investment objectives, risks, charges and expenses carefully before investing. Please call 877 518-9161 [or go to [www.tiaa-cref.org](http://www.tiaa-cref.org)] for a prospectus that contains this and other information. Please read the prospectus carefully before investing.**

TIAA-CREF Individual & Institutional Services, LLC and Teachers Personal Investors Services, Inc. distribute securities products. TIAA (Teachers Insurance and Annuity Association) New York, NY and TIAA-CREF Life Insurance Co., New York, NY issue insurance and annuities. TIAA Trust Company, FSB provides trust services.

©2004 Teachers Insurance and Annuity Association-College Retirement Equities Fund (TIAA-CREF), New York, NY 10017

C31599A

**From:** Page, Jenni Brickhouse  
/O=WOFFORD COLLEGE/OU=FIRST ADMINISTRATIVE GROUP/CN=RECIPIENTS/CN=PAGEJB  
**Subject:** Daily Announcements Web Form  
**Date:** September 14, 2004 at 12:10 PM  
**To:** Wofford Faculty/Staff (WoffordStaff@Wofford.Int) WoffordStaff@Wofford.Int



---

### **New Daily Announcements Web Form**

The new "Daily Announcements" web form is now available at [www.wofford.edu/dailyAnnouncements](http://www.wofford.edu/dailyAnnouncements).

Please follow these few guidelines when submitting announcements:

1. Announcements MUST be submitted by 8 a.m. to be included with that day's announcements. Anything posted after 8 a.m. will run the following day. Please do not email announcements to the web office.
2. Please do not submit an announcement more than twice.
3. Solicitations will not be included
4. Advertisements will not be included

If you announce an upcoming event, please remember to post it on the [Wofford Calendar](#) as well.

Thank you,

Jenni Page  
Wofford Webmaster  
[pagejb@wofford.edu](mailto:pagejb@wofford.edu)

**From:** Page, Jenni Brickhouse  
/O=WOFFORD COLLEGE/OU=FIRST ADMINISTRATIVE GROUP/CN=RECIPIENTS/CN=PAGEJB  
**Subject:** Daily Announcements  
**Date:** September 15, 2004 at 9:49 AM  
**To:** Wofford Faculty/Staff (WoffordStaff@Wofford.Int) WoffordStaff@Wofford.Int, Wofford Students (WoffordStudents@Wofford.Int) WoffordStudents@Wofford.Int



### **University of St. Andrews Informational Meeting**

Any students interested in studying at the University of St. Andrews are invited to an informational meeting with Stephen Magee, St. Andrews representative, at 1:30pm today in the Office of Programs Abroad (DuPré Administration).

### **Rotaract Club Meeting**

We are having our first Rotaract Club Meeting of the semester! The meeting will be held on Thursday the 16th during lunch at 12 noon, downstairs in the AAAS room in Burwell. We welcome any student or faculty/staff member that would like to attend. Rotaract clubs hold meetings which feature speakers, discussions, and visits to other clubs. Rotaractors also get together for service projects, social activities, and leadership workshops. If you would like any additional information about the Rotaract Club feel free to email myself [scheidam@wofford.edu](mailto:scheidam@wofford.edu) or Dr. Akers [akersjc@wofford.edu](mailto:akersjc@wofford.edu).

### **Newman Club**

Newman Club will have pizza and soft drinks on Wednesday, September 15 at 5:00 p.m. in the Student Life Building in Lobby 2 (upstairs). Deacon Bob from JORS is our guest speaker this week. Come grab a slice of pizza and meet some new friends at our first meeting of the semester.

### **Souljahs for Christ**

Souljahs for Christ was established to reach out to the students of Wofford College and to share the gospel of Jesus Christ. It is also here to encourage others through the testimonies of peers, and to grow stronger in faith by reading and studying God's word. Our doors are open to all, it doesn't matter your background or what you're dealing with. The meeting is this Wednesday, September 15 @ 6:00pm in the Holcombe Room located at the bottom of Burwell. You are welcome to bring your dinner down also. This week's topic will be "Purpose."

### **FCA Thursday Night**

Fellowship of Christian Athletes at Wofford will have its first campus meeting on Thursday, September 16. The meeting will start at 8:30 pm at Player's Corner outside of Burwell. All students and faculty are welcome. Head Football Coach Mike Ayers will be our guest speaker. Come fellowship and worship with us.

### **Facilities Forum**

The Facilities Forum on Thursday, September 16th at 11am will be in Leonard Auditorium, **NOT** McMillan Theater.

### **College Fest Tickets**

College Fest Tickets are now available in the Office of Student Affairs 10am-5pm. Headliners include Nannv Roots and Sister Hazel. The cost of tickets is \$10 in advance

Headliners include Happy Roots and Sister Hazel. The cost of tickets is \$20 in advance and \$20 at the door. Rain location is the Spartanburg Memorial Auditorium.

### **"College Day" at Wade's Restaurant**

Wade's Restaurant reminds you that every Monday is "College Day" at Wade's! You may be far from home...but you're not far from homemade at Wade's. Wade's is located on Pine Street, 2 minutes from campus. Look up their updated menu at [www.eatatwades.com](http://www.eatatwades.com) or call 598-8203. Wade's Restaurant is a proud supporter of Terrier Athletics and presenting sponsor of the "Growing Up Gold" youth initiative from Wofford Sports Marketing.

### **Georgia Southern football game viewing parties**

The Wofford Club of Spartanburg is hosting a viewing party for this weekend's showdown with Georgia Southern. For those who are unable to make the trip to Statesboro, join other Terrier fans at Gooney Bird's Sports Grill (2725 Reidville Rd). Be sure to ask for Wofford drink and food specials and be sure to wear your black and gold. For more information contact the Wofford Alumni Office at 597-4187. The Terriers and Eagles kickoff at 7:30 pm and the game will be shown live on FSN South.

Other Wofford Club official viewing party locations for the Georgia Southern game include:  
Greenville: Wild Wings Café (15 W. Washington St.) special section upstairs  
Myrtle Beach: Spencer's (5910 South Kings Highway - across from Ocean Lakes)

### **Corporate Class Rental Car Program for Wofford**

Wofford employees, did you know you are a member of the Enterprise Rent-A-Car Corporate Class Program? That's right - you are eligible for all of the following benefits:

- Great rates
- Free pick-up and delivery
- Over 14 locations in upstate SC
- Luxury's, Minivans, 15 Passengers Vans
- Cargo Vans, Trucks, Large SUV's
- Unlimited mileage available
- Weekend specials
- Convenient hours of operation: 8:00AM-6:00PM M-F, 9:00AM-12:00 Noon Sat

A flyer from Enterprise was placed in all faculty boxes this week. To be connected to the closest office, please call 864-542-1838. Enterprise Rent-A-Car, proud supporter of Wofford College Athletics.

### **Lost and Found**

Found: a GAP jeans jacket. Contact Dr.Trakas at ext 4573 to claim.

From: Page, Jenni Brickhouse

/O=WOFFORD COLLEGE/OU=FIRST ADMINISTRATIVE GROUP/CN=RECIPIENTS/CN=PAGEJB

Subject: Daily Announcements

Date: September 16, 2004 at 10:28 AM

To: Wofford Faculty/Staff (WoffordStaff@Wofford.Int) WoffordStaff@Wofford.Int, Wofford Students (WoffordStudents@Wofford.Int) WoffordStudents@Wofford.Int

JP

---

### **Spring 2005 Study Abroad Deadline**

This is a reminder that all Spring 2005 application materials are due in the Office of Programs Abroad by Friday, Oct. 1 at 5:00 pm. If you have questions, contact Amy Lancaster at x. 4026.

### **College Fest '04 Get Tickets Now**

College Fest 2004 is scheduled for Saturday, Sept. 18, at Barnet Park, featuring hip-hop artists Nappy Roots and Southern "high-octane" rock band Sister Hazel. Gates open at 6 p.m. Get your \$10 tickets in Student Affairs; tickets at the door, \$20.

Free food and non-alcoholic beverages will be available from 6 to 7:30 p.m.

Rain Location: Spartanburg Memorial Auditorium

### **Amnesty International**

Amnesty International will be meeting to write its first letters on Monday, September 20th at 7:00 p.m. in acorn cafe (in Milliken). Our first letter will be to the Nigerian government concerning members of a magazine staff who were imprisoned last week and are in danger of being tortured. All students and faculty are welcome and encouraged to come; all materials will be provided. No experience necessary, just a concern for fellow humans. See you there.

For more information contact Laura Vaughn at [vaughnls@wofford.edu](mailto:vaughnls@wofford.edu) or x5320

### **Fraternity Rush**

All freshmen males or non-Greek upperclassmen males interested in participating in this fall's Rush will need to register online at <http://www.wofford.edu/greekLife/Rush/default.asp>. The registration fee is \$45 and the deadline is this Friday, September 17th at 5PM. The registration fee can be paid by check or cash in the Student Affairs office as well as online. If you have any questions regarding Rush, you may contact the IFC Rush Chairman, Claude Prevost, at [prevostct@wofford.edu](mailto:prevostct@wofford.edu) or the IFC President, Trey Whitmire, at [whitmireww@wofford.edu](mailto:whitmireww@wofford.edu).

### **New Hours for Zach's**

Zach's will now stay open until 7:30 pm on Fridays and Saturdays.

### **25% off Tuesdays at Palmetto Grill**

Show your Wofford ID on Tuesdays at Palmetto Grill and get 25% off your entire entrée or buffet. Located at 351 Whitney Rd. behind Benson Nissan - just minutes from campus - call 515-9256. Palmetto Grill is a proud supporter of the Terriers.

**From:** Page, Jenni Brickhouse

/O=WOFFORD COLLEGE/OU=FIRST ADMINISTRATIVE GROUP/CN=RECIPIENTS/CN=PAGEJB

**Subject:** FCA Locations Change

**Date:** September 16, 2004 at 1:17 PM

**To:** Wofford Faculty/Staff (WoffordStaff@Wofford.Int) WoffordStaff@Wofford.Int, Wofford Students (WoffordStudents@Wofford.Int) WoffordStudents@Wofford.Int




---

## **FCA**

Due to the rain, FCA is changing our meeting location from Player's Corner to the Team Meeting Room on the bottom floor of Richardson. The meeting will still be at 8:30 PM.





**From:** Page, Jenni Brickhouse  
/O=WOFFORD COLLEGE/OU=FIRST ADMINISTRATIVE GROUP/CN=RECIPIENTS/CN=PAGEJB   
**Subject:** Severe Weather Alert/ Emergency Locations  
**Date:** September 16, 2004 at 5:15 PM  
**To:** Wofford Faculty/Staff (WoffordStaff@Wofford.Int) WoffordStaff@Wofford.Int, Wofford Students (WoffordStudents@Wofford.Int)  
WoffordStudents@Wofford.Int

---

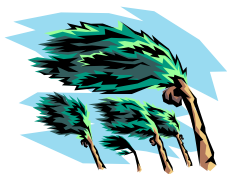


SEVERE  
THUN...M.doc



emergency  
locatio...04.doc

WOFFORD COLLEGE  
CAMPUS SAFETY DEPARTMENT



# EMERGENCY LOCATIONS

BUILDING	SAFE LOCATION
1. Marsh Hall	<b>1<sup>st</sup> floor interior hallways</b>
2. Greene Hall	1 <sup>st</sup> floor interior hallway near laundry room
3. Carlisle Hall	<b>1<sup>st</sup> floor interior hallway</b>
4. Carlisle Hall	1 <sup>st</sup> floor main hallway
5. Shipp Hall	<b>Basement laundry room area</b>
6. DuPre Hall	Ground floor hallway near laundry room
7. Burwell Building	<b>Dean's Dining Room and Serving Area on First Floor</b>
8. Milliken Science Center	First floor of east wing or amphitheater
9. Daniel Building	<b>Interior hallways near ROTC on the first floor</b>
10. Black Science Annex	Bottom floor/Classroom away from windows
11. Fraternity Houses	<b>First Floor of Greene Hall</b>
12. Black Admissions	Interior offices on 1 <sup>st</sup> floor
13. Papadopoulos Building	<b>Interior room off of main floor</b>
14. Olin Building	Olin Theatre
15. Dean's House	<b>Bottom floor interior of house away from windows and doors</b>
16. President's House	Basement
17. Carlisle House	<b>Basement</b>
18. Health Services	First floor interior of house away from windows and doors
19. Dupre Administration Building	<b>1<sup>st</sup> floor interior hallway</b>
20. Main Building	Mickel Chapel
21. Snyder House	<b>1<sup>st</sup> floor interior hallway, near restrooms</b>
22. Sandor Teszler Library	Conference Room on First Floor
23. Andrews Field House	<b>Hallway in the women's center by the carpet tapestry</b>
24. Campus Life Building	Interior hallways near dressing rooms under East stands in Ben Johnson Arena
25. Richardson Building	<b>Football dressing room on first floor</b>
26. Gibbs Stadium	Ground floor restrooms
27. Curry Building	<b>Basement away from loading docks</b>
28. Reeves Tennis Center	Locker rooms/restrooms

In the event of an emergency, the college's official spokespersons are Dr. Doyle Boggs and Ms. Laura Corbin in the Communications Office. They can be reached at ext. 4180.

In the event that the campus has to be evacuated, everyone should go to the Spartanburg North Baptist Church on Highway 176 North. Directions are printed on the reverse side of this sheet.

**CAMPUS SAFETY**  
**Dial Ext. 4911**

## **SEVERE THUNDERSTORM, TORNADOES**

A. When a warning is received, Campus Safety Officers and the switchboard operator will begin calling designated extensions in each building. Individuals answering these calls will then go door to door warning occupants to move to interior hallways of the lowest floors, bringing with them any available flashlights and battery powered radios.

B. Before the “all clear” is sounded, the Dean of Students or the Director of Residence Life will ensure that everyone is accounted for. Maintenance staff will inspect all buildings to determine if any areas should be closed off. If such is the case, a Designated Evacuation Center will be established and standard procedures will be in effect.

### **TORNADO, SEVERE THUNDERSTORM, HURRICANE PROCEDURES (LEVEL I - WARNING / LEVEL III - STRIKE)**

Tornadoes and severe thunderstorms can occur rather suddenly; therefore, the following precautions and procedures shall be used.

#### **DEFINITIONS:**

**Tornado Watch:** Conditions are favorable for tornado or severe weather. Make staff aware, but take no action.

**Tornado Warning:** Tornado has been sighted - take shelter immediately.

1. Watches and warnings will be communicated to college buildings over the weather radios in the college offices. Radios must be left on at all times.
2. Warnings (or tornado drills) will be either:
  - a. The public address system.
  - b. If the electricity should be off, professors will be notified by a runner or by a portable bullhorn announcement in the hallways.

#### **STEPS OF ACTION FOR A TORNADO OR SEVERE THUNDERSTORM WARNING:**

1. An announcement will be made and staff, faculty and students will proceed to their designated sheltering position against a wall in an

inner hallway on the lowest floor or a small interior room of the building without windows, such as a bathroom or closet.

Assume a kneeling position, head down, using arms, books blankets, backpacks, pillows, etc., to protect head and neck from falling or flying debris. All personnel should be in a college building and not outside of the building during a severe thunderstorm/hurricane.

2. If time permits, the last person out should close doors, windows, blinds and curtains after exit into tornado safe areas. This creates a protective barrier against flying debris.

3. Staff, faculty and students should move away from glass/window areas during a violent storm. If possible, sheltering should be in an interior room/office, go to the center of the room. Stay away from corners; they attract debris. Get under a piece of furniture such as a workbench or heavy table or desk and hold on to it. Use cushions, blankets, or pillows to protect your body.

4. Persons in unsafe locations will go to assigned shelter areas.

a. If outside, get inside a building

b. If shelter is not available or there is not time to get inside, lie in a ditch culver or low-flying area, or crouch near a strong building. Be aware of potential flooding.

c. Use arms to protect head and neck.

5. Be Quiet. This is extremely important, so that necessary directions may be heard.

6. Professors should keep their class rosters with them during the emergency, kneel behind their classes to be sure students are following the emergency procedure and to verify student classroom count. Stay in a face down position until the all-clear signal given by emergency personnel.

7. The all-clear signal will be a verbal or PA announcement by the college office or designee.

a. Help injured or trapped persons, give first aid when appropriate. Do not try to move seriously injured persons, unless they are in immediate danger of further injury. Call for help.

- b. Monitor the radio (battery operated) or television to get the latest emergency information.
- c. Evacuate and stay out of damaged buildings
- d. Check for gas leaks (assigned personnel). If you smell gas or hear a blowing or hissing noise, open the windows and quickly leave the building. Call ext. 4911.
- e. Look for electrical system damage (assigned personnel). If you see sparks, broken or frayed wires or smell hot insulation, call ext. 4911.
- f. Check for water line damage or damaged pipes. If damaged has occurred, please contact Campus Safety at ext. 4911.

### **OTHER PROCEDURES**

1. Under no circumstances are personnel to be in the gym, auditoriums, dining hall, or under suspended walkways. Stay away from windows and exterior doors.
2. Never try to out drive a tornado in a car. Abandon the vehicle immediately and take shelter in a nearby building, lie in a ditch, culvert or low-lying area, or crouch near a strong building. Be aware of the potential for flooding. Use arms to protect head and neck.
3. In an outside office, blinds, curtains and windows are to be closed and office personnel are to use telephones in an inner office away from windows.
4. During a tornado watch, a weather spotter (designated person) to be posted outside to notify the office if a tornado is sighted.
5. The tone alert weather monitor should be located within hearing distance of office personnel.
6. In the event of a tornado sighting, Campus Safety will contact 911.

### **PHONE NUMBERS:**

If a tornado is sighted, remain calm and contact:  
Spartanburg Emergency 911  
Campus Safety 597-4911 or ext. 4911

**From:** Page, Jenni Brickhouse  
/O=WOFFORD COLLEGE/OU=FIRST ADMINISTRATIVE GROUP/CN=RECIPIENTS/CN=PAGEJB  
**Subject:** Faculty/Staff Daily Announcements  
**Date:** September 17, 2004 at 10:31 AM  
**To:** Wofford Faculty/Staff (WoffordStaff@Wofford.Int) WoffordStaff@Wofford.Int



- Spring 2005 Study Abroad Deadline
- Service of Worship
- Sister Hazel and Nappy Roots
- Stem Cell Research Forum
- Georgia Southern football game viewing parties
- Soccer teams at home Sunday

---

### **Fraternity Rush**

All freshmen males or non-Greek upperclassmen males interested in participating in this fall's Rush will need to register online at <http://www.wofford.edu/greekLife/Rush/default.asp>. The registration fee is \$45 and the deadline is this Friday, September 17th at 5PM. The registration fee can be paid by check or cash in the Student Affairs office as well as online. If you have any questions regarding Rush, you may contact the IFC Rush Chairman, Claude Prevost, at [prevostct@wofford.edu](mailto:prevostct@wofford.edu) or the IFC President, Trey Whitmire, at [whitmireww@wofford.edu](mailto:whitmireww@wofford.edu).

---

### **Spring 2005 Study Abroad Deadline**

This is a reminder that all Spring 2005 application materials are due in the Office of Programs Abroad by Friday, Oct. 1 at 5:00 pm. If you have questions, contact Amy Lancaster at x. 4026.

---

### **Extra-mural tennis tournament in Myrtle Beach**

This is just a brief message to tell you about the first ever USA Team Tennis - College State Tournament that will be held in Myrtle Beach the first weekend in November. As the Wofford campus recreation coordinator, I want to encourage anyone interested in participating in this kind of tournament to contact Brandon McKillop 4497 or [mckillopbs@wofford.edu](mailto:mckillopbs@wofford.edu).

---

### **Student Assistants**

I am still taking names of students who are interested in working with the Intramural Department. This is a paid (salaried) position and requires you to be available Monday - Thursday each week of a particular sport's season in the 5:00 PM to 8:00 PM region. I can be a little flexible here, but not a whole lot. Please call or email me (Brandon McKillop) if interested at 4497 or [mckillopbs@wofford.edu](mailto:mckillopbs@wofford.edu)

---

### **Service of Worship**

Service of Worship will be Sunday, September 19, 11:00 a.m. in Leonard Auditorium. Everyone is welcome.

---

### **Sister Hazel and Nappy Roots**

---

The Back to School College Fest concert has been moved to Memorial Auditorium because of the inclement weather. There will be food, drinks and fun beginning at 6:00 PM (music starts about 8:00 PM). There will be door prizes and fun for all. Tickets are \$10 in Student Affairs on Friday, and \$20 at the door on Saturday.

### **Stem Cell Research Forum**

---

Monday night's forum on stem cell research is full. Unfortunately, we'll be unable to take 'walk-ins'; only those who have reserved spots should attend. The response was so good that we'll likely repeat the seminar again in a few weeks.

### **Georgia Southern football game viewing parties**

---

The Wofford Club of Spartanburg is hosting a viewing party for this weekend's showdown with Georgia Southern. For those who are unable to make the trip to Statesboro, join other Terrier fans at Gooney Bird's Sports Grill (2725 Reidville Rd). Be sure to ask for Wofford drink and food specials and be sure to wear your black and gold. For more information contact the Wofford Alumni Office at 597-4187. The Terriers and Eagles kickoff at 7:30 pm and the game will be shown live on FSN South.

Other Wofford Club official viewing party locations for the Georgia Southern game include:  
Greenville: Wild Wings Café (15 W. Washington St.) special section upstairs  
Myrtle Beach: Spencer's (5910 South Kings Highway - across from Ocean Lakes)

### **Soccer teams at home Sunday**

---

Both the men's and women's soccer teams are at home on Sunday afternoon at Snyder Field - the men face Mercer at 1:00 pm and the women host Southern Conference foe, Appalachian State at 4:00 pm. The Tropical Shaved Ice stand will be open all afternoon for fans and students to enjoy and afternoon of Terrier Soccer.

**From:** Page, Jenni Brickhouse

/O=WOFFORD COLLEGE/OU=FIRST ADMINISTRATIVE GROUP/CN=RECIPIENTS/CN=PAGEJB

**Subject:** from John Lefebvre

**Date:** September 17, 2004 at 2:25 PM

**To:** Wofford Faculty/Staff (WoffordStaff@Wofford.Int) WoffordStaff@Wofford.Int

---



Dear Colleagues,

I am writing this letter to ask for your help. As you know, the Homecoming festivities now encompass a Friday Night Street Party on Magnolia. Last year, after conversations with Debbie Thompson, I volunteered to help recruit faculty to help at the Party. I thought the evening was a great success and was a lot of fun! You can ask any of the faculty who volunteered last year and you will get the same response. It was a fantastic event!! The faculty had a great time and loved interacting with the alumni, many of whom do not usually come to the open house we host on Saturday morning.

The reason for the note is to ask for your help in making this year even better. One of the issues that came up last year was that the faculty who were serving did not have enough time to interact with the alumni. We were too busy to stop and catch up as we would have liked. One solution is to have more faculty involvement so that we could interact more and still get the job done. Debbie tells me that we need another 10 faculty members for the event. All of the faculty from last year that can make it have already signed up. In fact, we have a couple of new people that have volunteered! If you are interested, please contact Debbie Thompson at 4208.

If you have any questions about the event or what your responsibilities will be, please do not hesitate to contact me. I really encourage you to think about volunteering. You will not be disappointed.

Thanks for your help and I hope to see you at the Party!

John

John C. Lefebvre, PhD  
Associate Professor and Chair  
Department of Psychology



**From:** Page, Jenni Brickhouse  
/O=WOFFORD COLLEGE/OU=FIRST ADMINISTRATIVE GROUP/CN=RECIPIENTS/CN=PAGEJB  
**Subject:** from Campus Union  
**Date:** September 20, 2004 at 9:42 AM  
**To:** Wofford Faculty/Staff (WoffordStaff@Wofford.Int) WoffordStaff@Wofford.Int, Wofford Students (WoffordStudents@Wofford.Int) WoffordStudents@Wofford.Int, sburgpsa1@bellsouth.net



## Campus Union Newsletter

September 2004

[campusunion@wofford.edu](mailto:campusunion@wofford.edu)

---

Vol. I No. 4

### Elections and Nominations Committee

President Josh Whitley, [whitleyjs@wofford.edu](mailto:whitleyjs@wofford.edu).

The Campus Union would like to welcome our newly elected freshmen delegates. They are:

Martha Albergotti  
Jason DeKoster  
Becky Seigert  
Kimberly Smith  
Leland Wood  
Monica Wooten

In addition, the Campus Union would like for those freshmen who desire to be involved in the governance of the student body to apply for one of our four standing committees: Campus Relations Committee, Facility Affairs Committee, Financial Affairs Committee, and the Wofford Activities Council- our social committee. Applications will be available at the end of the week (September 24, 2004) in the Student Affairs Office. We will also be confirming appointments to many of the official College Committees. For information, questions should be directed to the President of the Student Body's Cabinet. I encourage everyone to get involved!

### Executive Committee Report

Vice-President Zack Hinton, [hintonzd@wofford.edu](mailto:hintonzd@wofford.edu)

The Executive Committee is made up of all of the chairs of the standing committees of the Campus Union. Personally overseeing the progress of these committees the chairs are to be commended for their hard work and dedication to the student body. Elise Boos has continued to do a great job chairing the Campus Relations Committee with our newsletter, advertisement, and last year's Faculty and Staff Appreciation Luncheon. Elizabeth Frazier and Kris Roof continue to provide fun and exciting social events on campus through the Wofford Activities Council. Ashley Mamele and the Financial Affairs Committee tackled the difficult task of organizing and distributing the discount cards before students got back on campus. Emmett Sheridan and the Facilities Committee are to be commended for their help and support of the first annual Facilities Forum. Again these committee chairs are to be applauded for their efforts.

### Student Finance Ad-Hoc Committee

Chairman Meg Beacham, [beachammd@wofford.edu](mailto:beachammd@wofford.edu)

The Student Finance Ad-Hoc Committee is a new committee formed by the Campus Union to look at presenting an increase in the budget used for student organizations and student activities. We hope to do so by looking at other schools, but also by looking at what our organizations here on campus need and would like to do with a bigger budget. The committee members are Elizabeth Frazier, Emma Litzenburg, Elise Boos, Josh Whitley, Ashley Mamele, Ryan Waller, Jacque Shurburt, and Stephanie Johnson. The chair is Meg Beacham. If you have any further questions or comments, please feel free to contact any members of this committee.

### **Financial Affairs Committee**

Treasurer Ashley Mamele

The Financial Affairs Committee meets weekly to discuss and pass financial proposals before they are heard before the Campus Union Assembly in its entirety. The assembly has passed a new budget for the 2004-2005 fiscal year that has been completely revamped allotting more money for chartered organizations through the proposals budget. Just this past week, the assembly passed a proposal to give \$150 toward the introduction and implementation of a Wofford exercise program to help fund exercise classes weekly on-campus. There is approximately \$3600 left in the proposals budget for Campus Union to disperse for this year to chartered campus organizations. If your chartered organization needs funding for a project, you may contact any member of the assembly to present your proposal for you. Be sure to specifically cite what the money will be used for because we do not have the means to provide general funding to an organization. FAC was also responsible for the Wofford Student Discount cards you received in your CPO's at the beginning of the school year. Be sure to present the card and your Wofford ID to receive the discount. If you have any problems with any of the vendors, or if you are a faculty member and would like to receive a discount card via CPO, please email me at [mameleAE@wofford.edu](mailto:mameleAE@wofford.edu). If you have any other questions or concerns, feel free to contact me at any time.

### **Wofford Activities Committee**

Chairman Kris Roof and Chairman Elizabeth Frazier, [roofks@wofford.edu](mailto:roofks@wofford.edu) and [fraziereq@wofford.edu](mailto:fraziereq@wofford.edu)

The Wofford Activities Council is ready for a full semester! The committee is excited to be adding ten freshmen in a few short weeks. We have tons of exciting events planned including: a Drive-In Movie for Sept. 22nd, a Block Party before the UT-Chattanooga game on Oct. 2nd and our annual Homecoming events: Mr. Wofford, Skit & Float Competition, and a band at The Row for Friday night, October 15th. We also will have a band for Parents Weekend, a pep rally for the Furman game on November 11th and our annual Christmas party. All Wofford students are welcome at any of our meetings which are held weekly in McMillan Theatre at 12 pm on Thursdays. Remember that if you see WAC members wearing their red polo shirts at any time there is an event that day. Just stop any of them for the details. With any further questions contact Elizabeth Frazier ([fraziereq@wofford.edu](mailto:fraziereq@wofford.edu)) or Kris Roof ([roofks@wofford.edu](mailto:roofks@wofford.edu)).

### **Campus Relations Committee**

Chairman Elise Boos, [boosew@wofford.edu](mailto:boosew@wofford.edu)

CRC wrapped up last year with the Faculty and Staff Appreciation Luncheon which was dedicated to Dr. Richard Robinson, a Wofford Alum and Math Department Chair over the past several decades. There was a wonderful turn out for the event and the beautiful weather and clear skies were a perfect end to the semester. This semester CRC is getting an early start on the Holidays by gearing up for the annual Wofford Christmas and brainstorming ideas for a Campus wide Christmas service project. For those who have never been blessed with the experience of a Wofford Christmas, faculty and their families eat a Christmas dinner in Burwell with the students, followed by caroling at the Row, a Christmas skit, and the judging of the Christmas lights at the row (complete with hot chocolate and cookies of course!). If you have any special interest in helping CRC decide on a creative and festive service project, please email [campusunion@wofford.edu](mailto:campusunion@wofford.edu). If you suffer from the Gold and Black fever that seems to be in the air you might be interested to know that CRC will also be meeting again soon with Lenny Mathis in Athletics to further discuss a Wofford fight song. We know our terrier has bite, now let's hear some of that bark! CRC meets on Wednesday nights at 7:30 in the lobby of Greene. If you would like more information, have any questions, or want to suggest an unfulfilled Christmas wish that could be part of this year's festivities, please email Elise Boos at [boosew@wofford.edu](mailto:boosew@wofford.edu) or talk to any of our wonderful members.

### **Facilities Affairs Committee**

Chairman Emmett Sheridan

The Facilities Affairs committee has been extremely busy at the start of the fall semester. The campus has changed drastically since last year with the recently remodeled Burwell Dining Hall and the completion of the

changed drastically since last year with the recently renovated Durham Dining Hall and the completion of the new Women's Center that is located in Andrews Fieldhouse. This facility houses the offices of all major sororities on campus, as well as a new state of the art conference room. The new additions to campus do not end here though. Starting in December construction will begin on the west wing of Old Main as well as Leonard Auditorium. The Facilities Affairs committee is also assisting planners with the design of the newest dormitory on campus that is scheduled to be completed by August 2005. The other major construction project on campus deals with the remodeling of the Campus Life building. The entire lobby area will be transformed over the next two months to create a more student friendly environment. The bookstore, yet to be named, will be moved onto N. Church next to the Development Office in the building formerly occupied by a florist. The old bookstore will be converted into a game room full of televisions, pool tables and ping pong. These are the major construction events taking place on campus during the fall.

This fall also marked our first Facilities Affairs Forum. At this forum, students were able to address the people in charge of maintaining Wofford College, including physical plant, Aramark (food services), Public Safety and IT. The students came well prepared and a great discussion ensued. It was a tremendous success for both the students and the staff present, and we hope to move to bigger and better forums in the future. Below is a sample of the Questions that were asked at the panel. If you have any further questions, you may contact me at [Sheridanre@wofford.edu](mailto:Sheridanre@wofford.edu).

Q: Is it possible to get a bike rack on campus?

A: This is a distinct possibility that the college will look into.

Q: Can we have the dryers in Shipp repaired?

A: That problem is not handled by Wofford maintenance; it is controlled by an outside company that is in contact with the Residence Director. They have been called to come in and replace or repair these machines.

Q: Can we get more Vegetarian options in Zach's and Burwell?

A: The options are available in Zach's, but there is not sufficient space to put them all out. Just ask an employee and they will get you more items. Also, Amy Bell suggested having a meeting between the Aramark staff and vegetarians to help decide on what options would benefit them the most. Let her know if you would be interested in meeting.

Q: When will the new dormitory be finished?

A: Stage 1, the first 100 bed building, will be completed by August 2005, and the next unit will come in the following year.

Q: What are students to expect of Public Safety?

A: 5 - 10 % of Public Safety is actual law enforcement duty, but Public Safety wants to become more in touch with the students. They want to work with the students and not against them. Their new slogan is "Problem? We are here to help."

These were a small sampling of the many questions asked at the forum. Also, Dr. Wood outlined the plan for Wofford College. The administration is making this a Residential/Pedestrian Campus. Meaning they want all vehicle traffic to be located on the fringes, promoting pedestrian traffic in the center. They feel this will cause more interaction between students as they make their way to and from buildings in the Wofford Community.



**From:** Page, Jenni Brickhouse  
/O=WOFFORD COLLEGE/OU=FIRST ADMINISTRATIVE GROUP/CN=RECIPIENTS/CN=PAGEJB ✉  
**Subject:** from Student Affairs: Wofford Shuttle Schedule  
**Date:** September 20, 2004 at 9:47 AM  
**To:** Wofford Faculty/Staff (WoffordStaff@Wofford.Int) WoffordStaff@Wofford.Int, Wofford Students (WoffordStudents@Wofford.Int)  
WoffordStudents@Wofford.Int, sburgpsa1@bellsouth.net

---



Wofford College  
combin...ule.doc

# New Wofford/Skylyn Shuttle Bus Times

Sparta Bus Times for the Wofford/Skylyn Shuttle Monday through Friday Only

Beginning Monday, September 20<sup>th</sup> the Sparta Bus will stop at these times.  
This revised schedule should answer many of your concerns about riding the bus.

Passenger Center	Arrive Skylyn	Depart Skylyn	Arrive at Wofford	Depart Wofford
7:20 AM	7:35 AM	7:40 AM	7:55 AM	8:00 AM
8:05 AM	8:20 AM	8:25 AM	8:40 AM	8:45 AM
8:50 AM	9:05 AM	9:10 AM	9:25 AM	9:30 AM
9:35 AM	9:50 AM	9:55 AM	10:10 AM	10:15 AM
10:20 AM	10:35 AM	10:40 AM	10:55 AM	11:00 AM
11:05 AM	11:20 AM	11:25 AM	11:40 AM	11:45 AM
11:50 PM	12:05PM	12:10PM	12:25 PM	12:30 PM
12:35 PM	12:50 PM	12:55 PM	1:20 PM	1:25 PM
1:20 PM	1:35 PM	1:40 PM	1:55 PM	2:00 PM
2:05 PM	2:20 PM	2:25 PM	2:40 PM	2:45 PM
2:50 PM	3:05 PM	3:10 PM	3:25 PM	3:30 PM
3:35 PM	3:50 PM	3:55 PM	4:10 PM	4:15 PM
4:20 PM	4:35 PM	4:40 PM	4:55 PM	5:00 PM
5:05 PM	5:20 PM	5:25 PM	5:40 PM	5:45 PM
5:50 PM	6:05 PM	6:10 PM	6:25 PM	6:30 PM
6:35 PM	6:50 PM	6:55 PM	7:10 PM	7:15 PM
7:20 PM	7:35 PM	7:40 PM	7:55 PM	8:00 PM
8:05 PM	8:20 PM	8:25 PM	8:40 PM	8:45 PM
8:50 PM	9:05 PM	9:10 PM	9:35 PM	9:40 PM
9:35 PM	9:50 PM	9:55 PM	10:10 PM	10:15 PM
10:20 PM	10:35 PM	10:40 PM	10:55 PM	11:00 PM
11:05 PM	11:20 PM	11:25 AM	11:40 PM	11:45 PM
11:50 PM	12:05 AM	12:10 AM		
		Friday Only		
			<i>12:25 AM</i>	<i>12:30 AM</i>
<i>12:35 AM</i>	<i>12:50 AM</i>	<i>12:55 AM</i>	<i>1:10 AM</i>	<i>1:15 AM</i>
<i>1:20 AM</i>	<i>1:35 AM</i>	<i>1:40 AM</i>	<i>2:00AM</i>	<i>2:05AM</i>
<i>2:10 AM</i>	<i>2:25 AM</i>	<i>No Service</i>	<i>No Service</i>	<i>No Service</i>

The Passenger Center stop will provide a convenient link to the 8 Sparta Bus Routes that run throughout the city. Any person with a Wofford ID can ride Sparta Routes for free during the term of our contract with Sparta Bus. Information about these routes is available on the bus, in the Burwell Building, and in Student Affairs.

**From:** Page, Jenni Brickhouse

/O=WOFFORD COLLEGE/OU=FIRST ADMINISTRATIVE GROUP/CN=RECIPIENTS/CN=PAGEJB

**Subject:** Daily Announcements

**Date:** September 20, 2004 at 10:12 AM

**To:** Wofford Faculty/Staff (WoffordStaff@Wofford.Int) WoffordStaff@Wofford.Int, Wofford Students (WoffordStudents@Wofford.Int) WoffordStudents@Wofford.Int, sburgpsa1@bellsouth.net, Betsy Mcgehee (betsymcgehee@yahoo.com) betsymcgehee@yahoo.com

JP

---

## **Wofford College Daily Announcements - Monday, September 20, 2004**

- Travel Interim Meetings
- Communion
- Sherman College of Straight Chiropractic
- Internships in Spartanburg
- Lost and Found

### **Travel Interim Meetings**

---

This is a reminder that all travel interim meetings will be held on Tuesday, September 21. See <http://www.wofford.edu/interim/infoSessions.asp> for details and updated information.

### **Communion**

---

Communion will be observed Tuesday, September 21, 5:15 p.m., Mickel Chapel.

### **Sherman College of Straight Chiropractic**

---

Mr. Matthew Christopher will be in the lobby of RMSC on Monday, Sep 20 from 9:00 - 11:30 to inform and recruit. For more information, you may contact him at 578-8770.

### **Internships in Spartanburg**

---

Mindy Westbrook of the Spartanburg Downtown Association is seeking unpaid interns to assist with work on the organization's newsletter "Around Downtown." This should be of special interest to students interested in marketing and non-profits. Contact Ms. Westbrook at [mindywestbrook@yahoo.com](mailto:mindywestbrook@yahoo.com)

### **Lost and Found**

---

lost: A set of keys somewhere in Campus Life. There is a Honda car key and small surfboard in the set. If found please respond to [tidwellb@wofford.edu](mailto:tidwellb@wofford.edu)



**From:** Page, Jenni Brickhouse  
/O=WOFFORD COLLEGE/OU=FIRST ADMINISTRATIVE GROUP/CN=RECIPIENTS/CN=PAGEJB  
**Subject:** from the Admissions Office  
**Date:** September 20, 2004 at 11:36 AM  
**To:** Wofford Faculty/Staff (WoffordStaff@Wofford.Int) WoffordStaff@Wofford.Int, Wofford Students (WoffordStudents@Wofford.Int) WoffordStudents@Wofford.Int

---

### **Reserved Parking Tuesday**

The back section of the Admissions Parking lot (Hugh Black Building) will be reserved Tuesday morning for an ACT Work Shop.

Please help us by parking in another campus lot or in the Second Presbyterian Church parking lot across the street. Parking has been approved by the church for tomorrow.

Thank you for your help.

**From:** Page, Jenni Brickhouse  
/O=WOFFORD COLLEGE/OU=FIRST ADMINISTRATIVE GROUP/CN=RECIPIENTS/CN=PAGEJB  
**Subject:** Daily Announcements  
**Date:** September 21, 2004 at 9:53 AM  
**To:** Wofford Faculty/Staff (WoffordStaff@Wofford.Int) WoffordStaff@Wofford.Int



---

## **Wofford College Daily Announcements - Tuesday, September 21, 2004**

- Travel Interim Meetings
- PSA Meeting
- Regular Babysitter Wanted
- Catholic Mass and Dinner
- Help with Transportation
- Service Learning Newsletter
- Lost and Found

### **Travel Interim Meetings**

---

This is a reminder that all travel interim meetings will be held on Tuesday, September 21. See <http://www.wofford.edu/interim/infoSessions.asp> for details and updated information.

### **PSA Meeting**

---

PSA: Tuesday at 7 p.m.

Join us for dinner, praise/worship, and discovering our God gifts. <http://spartanburgpsa.org> or 582-5600.

We are located across the street from the main entrance of Wofford. Look for our sign in front of the PSA House.

### **Catholic Mass and Dinner**

---

Catholic faculty, staff and students are cordially invited to Carlisle House (home of Dean Bigger) on Wednesday, September 23. Wofford graduate Father Tim Lijewski will say the daily mass at 5:30 p.m. and a buffet dinner will follow at 6. (You may attend either event if you cannot stay for both or feel free to drop in.) Father Tim also will be available for individual counseling and the sacrament of reconciliation. If you plan to eat with us, an e-mail note to [biggerrh@wofford.edu](mailto:biggerrh@wofford.edu) will be greatly appreciated for our planning purposes.

### **Help with Transportation**

---

Is there a Wofford staff or faculty member or a Wofford student who might be driving from Atlanta to Wofford on Sunday, September 26? I am looking for a ride for our Troubadour soloist, Ana Vidovic, on that Sunday, afternoon or evening.

Please call me, Dr. Akers, at x4261.



## **Service Learning Newsletter**

---

This summer the Office of Volunteer Services began a transformation in both its theory and practice. This office is now known as The Service Learning Center, and you will find more information about this change if you visit our website posted below. Out of The Service Learning Center several groups and projects operate - such as: The Bonner Scholars Program, Twin Towers, Alpha Phi Omega, AmeriCorps, Johnson/Community Scholars and, of course, service learning!

To provide the Wofford community with more information about The Service Learning Center and ensure effective communication throughout the year, the first ever Service Learning Newsletter is now ready for you to view.

To view the newsletter, please visit our website at  
<http://www.wofford.edu/serviceLearning/default.asp>

If you have any questions, please contact Lyn Pace at extension 4402 or [pacepl@wofford.edu](mailto:pacepl@wofford.edu).

## **Light the Night Walk fundraiser**

---

Are you wearing a yellow "Live Strong" bracelet? ...then prove that you really believe in what it stands for. October 7<sup>th</sup> is the annual Light the Night walk fundraiser for the Leukemia and Lymphoma society. My name is Ellie Underhill and I am heading up a team for Wofford. This is a really great cause that touches many people's lives every day. Save your quarters here and there, and ask for donations everywhere. Come out at 7pm on Thursday, October 7<sup>th</sup> for a short two mile walk to show that you believe in the Live Strong campaign and believe in fighting cancer. For more information email me at [Underhillme@wofford.edu](mailto:Underhillme@wofford.edu) or call me at extension \*4951. The event is always fun and is catered by Outback Steakhouse.

## **Voter Registration Booth**

---

Wofford College Campus Public Policy Committee and Delta Sigma Theta Sorority, Incorporated are sponsoring a voter registration booth at lunch and dinner (11:30-1:30 and 5:30-7:00) on Wednesday, September 22nd in front of Burwell Dining Hall. Absentee ballot information will be available as well as voting information for states other than South Carolina. Please register to vote and let your voice be heard!

## **Zeta Tau Alpha Pledge Class of 2008**

---

The sisters of Zeta Tau Alpha proudly announce the addition of 25 new members to our chapter. The following ladies are ZTA's pledge class of 2008: Martha Albergotti, Katherine Aul, Lauren Bailey, Kinli Bare, Meredith Brantley, Leanne Brinson, Ashley Busbee, Katie Carpenter, Robyn DuRant, Amber Evans, Ashley Glasgow, Nika Guy, Annie Harbison, Erin Herstine, Katie Isbell, Amanda Kilbourne, Kristi Lynch, Laura Murray, Jamie Newton, Jennie Nichols, Kristy Parise, Laura Smith, Betsi Taylor, Valerie Tyndall, and Porter Whitesides. We are very excited to welcome these great girls into our sisterhood!

## **Bulletin Boards**

---

Mrs. Blackwell (Daniel Bldg.) has 2 small bulletin boards for FREE. If you would like to "check these out" to see if they could meet your needs, please go by her office.

## **Lost and Found**

---

lost: Patagonia fleece left in AAAS yesterday. Contact Margaret Grimsley  
[grimslyme@wofford.edu](mailto:grimslyme@wofford.edu) if found.

**From:** Page, Jenni Brickhouse  
/O=WOFFORD COLLEGE/OU=FIRST ADMINISTRATIVE GROUP/CN=RECIPIENTS/CN=PAGEJB  
**Subject:** Daily Announcements  
**Date:** September 22, 2004 at 9:55 AM  
**To:** Wofford Faculty/Staff (WoffordStaff@Wofford.Int) WoffordStaff@Wofford.Int



---

## **Wofford College Daily Announcements - Wednesday, September 22, 2004**

- Thank you from Admissions
- Attention Freshmen
- Catholic Mass and Dinner
- Canterbury of Spartanburg
- Internships in Atlanta with Turner Broadcasting
- Great career opportunity - Wachovia interviews
- Wofford Outdoors Meeting
- Wanted: Women for the Wofford College NCAA Division I co-ed Rifle Team
- Java City Hours
- WAC Drive-In-Movie
- Voter Registration Booth
- FCA Meeting
- Lost and Found

### **Thank you from Admissions**

---

The Admissions Office would like to thank all of the staff and faculty that were inconvenienced by parking arrangements this morning during the ACT Work Shop. Also, we would like to thank the following people who made the day a success:

IT Department  
Cathy Conner  
Kay Vipperman  
Second Presbyterian Church  
Maintenance  
Housekeeping  
Public Safety  
Jenni Page  
Brian Rawlinson  
Dining Services (especially Sheila)  
and our own a "Admissions Staff".

### **Attention Freshmen**

---

Campus Union is opening up positions on our four standing committees for freshmen who would like the opportunity in the governance of their peers. We have limited space on the Campus Relations Committee, Facility Affairs Committee, Financial Affairs Committee, and WAC- our social committee. Please pick up an application in the office of Student Affairs. Descriptions of the committees are listed with the applications. If you have any further questions please feel free to contact a Student Body Officer.

### **Catholic Mass and Dinner**

---

Catholic faculty, staff and students are cordially invited to Carlisle House (home of Dean Bigger)

Faculty, staff and students are cordially invited to Carmine House (home of Dean Bigger) on Wednesday, September 22. Wofford graduate Father Tim Lijewski will say the daily mass at 5:30 p.m. and a buffet dinner will follow at 6. (You may attend either event if you cannot stay for both or feel free to drop in.) Father Tim also will be available for individual counseling and the sacrament of reconciliation. If you plan to eat with us, an e-mail note to [biggerrh@wofford.edu](mailto:biggerrh@wofford.edu) will be greatly appreciated for our planning purposes.

---

### **Canterbury of Spartanburg**

Canterbury of Spartanburg will be meeting this evening at St. Matthew's (across from Barnes & Noble). We will kick things off with contemporary worship at 6:30, and then have dinner and discussion afterwards. Come for the worship, the food, or the fellowship--or all of it! If you need more information or have any questions, please contact Karla Parris at [parriskn@wofford.edu](mailto:parriskn@wofford.edu) or ext. 4181.

---

### **Internships in Atlanta with Turner Broadcasting**

Career Services has information on five internship positions with TBS in Atlanta during January 2005.

None require a specific major, but all require an interest in media and the skills to do research, analysis and writing. You may review details of these openings in the Career Services Office. Deadline for resume submission is Thursday, Sep. 23 at 5:00 PM.

---

### **Great career opportunity - Wachovia interviews**

Great career opportunity with Wachovia Bank in Charlotte: on October 13, Wachovia will hold interviews in the Career Services Office for the position of financial analyst (fixed income). (Come by Career Services for details.) This position offers an excellent salary and the opportunity for outstanding career advancement. Any senior with an overall GPA of 3.2 and 18 hours of finance coursework may submit a resume. Deadline for submission of resume to Career Services is Friday, September 24. Don't miss this excellent opportunity.

---

### **Wofford Outdoors Meeting**

The Wofford Outdoors Club is having a meeting today to talk about upcoming events and future ideas. To find out what is planned or to help make plans, stop by anytime from 12 till 1P.M. in the AAAS room in the bottom of Burwell. If you cannot attend or have any comments you can contact either Brian Greene ([greenebt@wofford.edu](mailto:greenebt@wofford.edu)) or Ben Harlan ([harlanba@wofford.edu](mailto:harlanba@wofford.edu))

---

### **Wanted: Women for the Wofford College NCAA Division I co-ed Rifle Team**

We need you for our co-ed (men's and women's) team! Shooting experience is a plus but not necessary. If interested, contact Randy Hall at 4338 or [halljr@wofford.edu](mailto:halljr@wofford.edu).

---

### **Java City Hours**

Java City's new open hours are as follows:  
Monday – Thursday: 8am-5pm and 7pm-11pm

Friday: 8am-5pm

### **WAC Drive-In-Movie**

---

The hilarious movie "Old School" will be playing in the front lawn of Old Main tonight, September 22, at 9:00. Come out with all your friends and enjoy this drive-in movie sponsored by WAC.

### **Voter Registration Booth**

---

Wofford College Campus Public Policy Committee and Delta Sigma Theta Sorority, Incorporated are sponsoring a voter registration booth at lunch and dinner (11:30-1:30 and 5:30-7:00) on Wednesday, September 22nd in front of Burwell Dining Hall. Absentee ballot information will be available as well as voting information for states other than South Carolina. Please register to vote and let your voice be heard!

### **FCA Meeting**

---

The Fellowship of Christian Athletes will meet this Thursday night, September 23, at 8:30 pm in Player's Corner. All students and faculty/staff are welcome. You do not have to be an athlete to come and worship with us. We'd love to see you Thursday night.

### **Lost and Found**

---

Lost: a man's watch in a classroom in the Olin Building --- see the switchboard to claim.

**From:** Page, Jenni Brickhouse  
/O=WOFFORD COLLEGE/OU=FIRST ADMINISTRATIVE GROUP/CN=RECIPIENTS/CN=PAGEJB  
**Subject:** from Sandor Teszler Library  
**Date:** September 22, 2004 at 10:09 AM  
**To:** Wofford Faculty/Staff (WoffordStaff@Wofford.Int) WoffordStaff@Wofford.Int



## **Library Adds ArtStor**

The Library had added access to ArtStor to the Wofford website.

The ARTstor Charter Collection currently contains approximately 300,000 images; by 2006 it is expected to contain 500,000. The Charter Collection documents artistic traditions across many times and cultures and embraces architecture, painting, sculpture, photography, decorative arts, and design as well as many other forms of visual culture.

At present an icon leading to ArtStor is available from the Library's web page.

Faculty members may consult a librarian for instructor privileges which will permit the creation of folders to share Image Groups with students or colleagues.

[ArtSTOR](#) is a database of images designed to provide access to great works of art from around the world, from all time periods. It includes architecture, sculpture, painting, photography, decorative arts and design, as well as many other aspects of visual culture. It is particularly strong on Western art, but there are special collections which focus on American artists, Asian art, and architecture and design.

Follow the link from the [library homepage](#) . You will also find it linked on our [research databases page](#), or you can search for it by name in the [library catalog](#).

In addition, ArtSTOR provides access to the Art History Survey Collection, a collection of images derived from the items discussed in a series of ten standard art history textbooks. The images in this collection have information links which indicate where the items are discussed. The library currently has five of these and is acquiring the other five, which will make this collection a useful tool for students starting projects.

Because of the copyright agreements necessary to secure digital rights to this large collection of images it will not be possible to download images. However, it will be possible to set up folders to store groups of related images, or to use as slideshows. Once you set up an ID and password you will be able to access these folders from any computer with Internet access. Ask your librarian for details on how to set this up.

The ARTstor Charter Collection is derived from the several source collections listed below. These source collections are themselves the product of collaborations with libraries, museums, photographic archives, publishers, slide libraries, and individual scholars.

### **General Collections; The Image Gallery:**

A deep and broad collection of images of world visual art and culture.

### **The Art History Survey Collection:**

Key monuments of world art defined by a concordance of ten standard art history survey texts.

### **The Carnegie Arts of the United States Collection:**

A widely used collection of images documenting the history of American art, architecture, visual and material culture.

### **The Huntington Archive of Asian Art:**

A broad photographic overview of the art of Asia from 3000 B.C. through the present.

**The Illustrated Bartsch:**

A collection derived from the standard art reference publication, The Illustrated Bartsch, which contains Old Master European prints from the 15th to 19th Centuries.

**The Mellon International Dunhuang Archive:**

High resolution images, produced digitally, of wall paintings and sculpture from the Buddhist cave shrines in Dunhuang, China, a key site on the ancient Silk Route.

**The MoMA Architecture and Design Collection:**

A comprehensive collection of digital images representing the collections of the Department of Architecture and Design of The Museum of Modern Art (MoMA) in New York.

**From:** Page, Jenni Brickhouse  
/O=WOFFORD COLLEGE/OU=FIRST ADMINISTRATIVE GROUP/CN=RECIPIENTS/CN=PAGEJB  
**Subject:** Daily Announcements  
**Date:** September 23, 2004 at 10:45 AM  
**To:** Wofford Faculty/Staff (WoffordStaff@Wofford.Int) WoffordStaff@Wofford.Int, Wofford Students (WoffordStudents@Wofford.Int) WoffordStudents@Wofford.Int



---

## **Wofford College Daily Announcements - Thursday, September 23, 2004**

- FCA Meeting
- PSA Bible Fellowship
- Men's soccer hosts Wofford/Adidas Invitational
- Tropical Shaved Ice Stand open this weekend
- Law Schools on Campus Fall '04
- Football home opener Saturday night
- Intramural Terrier Tag
- The Troubadour Series at Wofford Begins Tonight
- Changes/Additions to Travel Projects
- In the Shadow of 9-11
- Lost and Found

### **FCA Meeting**

---

The Fellowship of Christian Athletes will meet this Thursday night, September 23, at 8:30 PM in Player's Corner. All students and faculty are welcome. You do not have to be an athlete to come and worship with us. We'd love to see you Thursday night.

### **PSA Bible Fellowship**

---

PSA Bible Fellowship meets in Zach's at 5:15 pm Thursdays.

### **Men's soccer hosts Wofford/Adidas Invitational**

---

The men's soccer program hosts the Wofford/Adidas Invitational this weekend.

Furman, Princeton, Liberty and the home standing Terriers make up this year's field. All games will be played at Snyder Field.

Friday, Sept. 24  
Furman vs. Princeton (3:30 pm)  
Wofford vs. Liberty (6:00 pm)

Sunday, Sept. 26  
Wofford vs. Princeton (Noon)  
Furman vs. Liberty (2:30 pm)

Come out and watch some great college soccer this weekend!

### **Tropical Shaved Ice stand open this weekend**

---

The Tropical Shaved Ice stand at Snyder Field will be open on Friday and Sunday of this week in conjunction with the Wofford men's and women's soccer matches.



Come over and enjoy one of more than 40 flavors of shaved ice and take in a full weekend of men's soccer action with the Wofford/adidas Invitational on Friday and Sunday and the women's game on Sunday afternoon.

### **Law Schools on Campus Fall '04**

---

The following law schools will hold information appointments in the Career Services Office. Please come by the office to sign up for an appointment time. The schools and dates are:  
Mon., Oct. 4 - USC Law School; Th., Oct.14 - GA State Univ. College of Law; Tu., Oct. 26 - Mercer Univ. School of Law; Tu., Nov. 9 - Cumberland School of Law of Samford Univ.

### **Football home opener Saturday night**

---

TerrierLand, an interactive kid's zone, will make its debut Saturday when the Wofford football team hosts Johnson C. Smith in the 2004 home opener at Gibbs Stadium. Kickoff is 7 p.m.

Open from 5 p.m. to 6:40 p.m., TerrierLand is located outside Gibbs Stadium between the home side plaza and Cummings Street.

TerrierLand will feature a football toss area, face-painting with the Wofford cheerleaders and meet and greets with Wofford mascots and the men's soccer team. Other TerrierLand features include a moonbounce, sidewalk chalk and special displays from Wade's Restaurant, the South Carolina Army National Guard and Nextel.

The first 1,000 fans to the game will receive a Wofford football poster, compliments of Orthopedic Specialties, The Real Yellow Pages from BellSouth and Regional Sports Medicine at Wofford. Li'L Cricket Food Stores will sponsor a pom-pons giveaway. The pom-pons will be pre-placed in the student section with the remainder given away at the gate.

Saturday's game is presented by the Herald-Journal. At halftime, stadium flags will be raised to honor the Terriers' 2003 Southern Conference championship and Division I-AA semifinal-round playoff appearance. There will also be a tribute to the Salvation Army's 100 years in Spartanburg.

### **Intramural Terrier Tag**

---

Anyone wishing to submit a Terrier Tag team, must have the rosters in to Brandon McKillop before Monday, September 27 at 4:00 PM. Any rosters submitted after that time will NOT be accepted as the schedule will be made that afternoon. Fraternities may submit up to 2 teams. Be advised that teams who don't show up or have to forfeit will be dropped from the league. Individuals can NOT play on more than one team, even if the other team is part of your fraternity. I am also looking for people who would be interested in making a few extra dollars being referees for Terrier Tag. Please email Brandon McKillop at [mckillopbs@wofford.edu](mailto:mckillopbs@wofford.edu) your rosters and email him if you are interested in helping referee the games. (You can ref games even if you are on a Terrier Tag roster.)

### **The Troubadour Series at Wofford Begins Tonight**

---

The Dublin Company, duo of Oliver Fortsch, Niall, on the guitar, and Thom Nielsen, flute will open

The Berlin, Germany, duo of Oliver Hartach-Naini, on the guitar, and Inea Meisen, flute will open the fifth annual Troubadour Series tonight, Thursday, at 7:00 pm in the Papadopoulos Building. Please go to their Web site at <http://www.flute-guitar.de> for a complete biography and access to one of their complete recordings. They will be interpreting music of Argentina, India and Iran. Admission is free to the Wofford public. For more information call Dr. Akers at 597-4261.

### **Changes/Additions to Travel Projects**

---

Please consult the travel project page for Interim 2005  
<http://www.wofford.edu/interim/travelProjects.asp>. Some projects have changed and more could be added before registration; stay informed by consulting the website on a daily basis.

### **In the Shadow of 9-11**

---

There will be a coffee house in Shipp Hall lounge on the 5th of October from 7-9 regarding the events of 9-11 and its aftermath. Feel free to read poetry, speak, show footage, sing, etc. Email [robertskc@wofford.edu](mailto:robertskc@wofford.edu) with your intended contribution, and anything you might need to preform. All off Wofford is welcome to watch or participate. There will be coffee and treats from Little Rivers Coffee Cafe. The deadline for sign-up's is October the 3rd.

### **Lost and Found**

---

Lost: black Patagonia fleece in AAAS room on Sunday. Contact Margaret Grimsley at [grimsleye@wofford.edu](mailto:grimsleye@wofford.edu) if found.

**From:** Page, Jenni Brickhouse  
/O=WOFFORD COLLEGE/OU=FIRST ADMINISTRATIVE GROUP/CN=RECIPIENTS/CN=PAGEJB  
**Subject:** Daily Announcements  
**Date:** September 24, 2004 at 10:05 AM  
**To:** Wofford Faculty/Staff (WoffordStaff@Wofford.Int) WoffordStaff@Wofford.Int



---

## **Wofford College Daily Announcements - Friday, September 24, 2004**

- From Human Resources
- Accounts Payable Check Processing Schedule
- Women's soccer at home Sunday
- TerrierLand makes its debut tomorrow
- Sunday Worship Service
- Dance Team Try-Outs
- Deadline for Beyond the City's Northern Border
- Association of Multicultural Students
- Lost and Found

### **From Human Resources**

---

"Thank you" to those who were able to attend the TIAA-CREF Financial Seminar on Tuesday, September 21st. The response and comments about the seminar have been very positive.

For those who were unable to attend, the seminar focused on the importance of starting a Supplemental Retirement Annuity (SRA), the impact the SRA will have on your retirement, the future of Social Security income and how to build a balanced profitable portfolio. It was the first in a series of seminars TIAA CREF offers and a preliminary to the individual retirement counseling sessions offered each fall and spring. We will be happy to offer it again if there is enough interest. Please contact Human Resources if you are interested.

The second seminar and individual retirement counseling will be held in October. The seminar will focus on Retirement Annuity Income Options. It is one you will not want to miss, especially if you plan to retire in the near future. The date, time and place for the seminar and counseling sessions will be announced soon. Please plan to take advantage of these opportunities.

Winter is fast approaching and with it comes the potential for inclement weather. Now is the time to prepare for ice and snow and to remind everyone of our Inclement Weather policy.

Wofford College ordinarily does not close because of weather that brings snow and ice to the area. Every effort will be made to hold classes and to have offices open. Commuting students and employees should understand that classes are held, but that they are to run no unreasonable risk to get to the campus. If an exception is made to this policy, Spartanburg radio (WSPA Radio, AM 910) and television stations (WYFF Channel 4, WSPA Channel 7, WLOS Channel 13, and FOX Channel 21) will be notified. If there is no cancellation notice on these sources, it is safe to assume that the College is open and conducting classes as usual.

### **Accounts Payable Check Processing Schedule**

---

This is just a reminder of our established check processing schedule.

Times and availability are listed below:

Received by Business Office BEFORE:

1:00 p.m. on Friday are available by 1:00 p.m. on Tuesday.

Received by Business Office BEFORE:

1:00 p.m. on Wednesday are available by 1:00 p.m. on Friday.

At times, unforeseen technology changes/down-times and circumstances beyond our control may alter this schedule, but it is our intention to strictly adhere to these times. We ask that all faculty/staff comply with this schedule when speaking with vendors regarding check availability.

We feel that this schedule allows for more efficiency and due to the high volume of check requests, we cannot make any exceptions nor can we process "checks on demand".

We appreciate your cooperation and understanding.

### **Women's soccer at home Sunday**

---

The women's soccer program hosts Southern Conference rival Elon Sunday afternoon at 5:00 pm at Snyder Field.

Come out and support the Terriers on Sunday!

### **TerrierLand makes its debut tomorrow**

---

TerrierLand, an interactive kids zone, will make its debut Saturday when the Wofford football team hosts Johnson C. Smith in the 2004 home opener at Gibbs Stadium. Kickoff is 7 p.m.

Open from 5 p.m. to 6:40 p.m., TerrierLand is located outside Gibbs Stadium between the home side plaza and Cummings Street.

TerrierLand will feature a football toss area, face-painting with the Wofford cheerleaders and meet and greets with Wofford mascots and the men's soccer team. Other TerrierLand features include a moonbounce, sidewalk chalk and special displays from Wade's Restaurant, the South Carolina Army National Guard and Nextel.

The first 1,000 fans to the game will receive a Wofford football poster, compliments of Orthopedic Specialties, The Real Yellow Pages from BellSouth and Regional Sports Medicine at Wofford. Li'L Cricket Food Stores will sponsor a pom-pons giveaway. The pom-pons will be pre-placed in the student section with the remainder given away at the gate.

Saturday's game is presented by the Herald-Journal. At halftime, stadium flags will be raised to honor the Terriers' 2003 Southern Conference championship and Division I-AA semifinal-round playoff appearance. There will also be a tribute to the Salvation Army's 100 years in Spartanburg.

### **Sunday Worship Service**

---

Sunday Worship Service will be held September 26, 11:00 a.m., Leonard Auditorium. Everyone is welcome.

### **Dance Team Try-Outs**

---

Anyone interested in trying out for the 2004-05 Wofford Dance Team will need to return the registration form and fee to Heather Morrow by 4pm today. Practices will be held next week on Wednesday (7-8:30pm) and Thursday (6-8pm) with try-outs on Friday from 3-5pm. If you have any questions email Heather Morrow at [morrowhj@wofford.edu](mailto:morrowhj@wofford.edu).

### **Deadline for Beyond the City's Northern Border**

---

The submission deadline for the Beyond the City's Northern Border Contest is Monday, September 27th. Students who studied abroad during 2003-04 and are interested in sharing their experiences must submit their works to the Office of Programs Abroad by 5pm. See <http://www.wofford.edu/studyAbroad/beyondCitysNorthernBorder.asp> for eligibility requirements, selection criteria, rules, and award information.

### **Association of Multicultural Students**

---

Please visit the AMS (formerly known as AAAS) Car Wash on Saturday September 25, 2004 from 10am-2pm at the Advanced Auto Parts parking lot on Asheville Highway. Cars for \$5 and Trucks/SUV's for \$7. All donations accepted. You may feel dirty but your car will be clean.

### **Lost and Found**

---

Found: Tridelta pin was found in the laundry room of Greene. Contact [shelleymk@wofford.edu](mailto:shelleymk@wofford.edu) to claim.

**From:** Page, Jenni Brickhouse  
/O=WOFFORD COLLEGE/OU=FIRST ADMINISTRATIVE GROUP/CN=RECIPIENTS/CN=PAGEJB  
**Subject:** Daily Announcements  
**Date:** September 27, 2004 at 9:49 AM  
**To:** Wofford Faculty/Staff (WoffordStaff@Wofford.Int) WoffordStaff@Wofford.Int, Wofford Students (WoffordStudents@Wofford.Int) WoffordStudents@Wofford.Int



---

## Wofford College Daily Announcements - Monday, September 27, 2004

- Amnesty International
- Voting information for Presidential Election November 2004
- Deadline for Beyond the City's Northern Border
- Safety Rail Request Notice for Resident Students
- Scoville Fellowship in DC
- SCALE Literacy Conference
- PSA - Soup Kitchen
- Women's soccer at home tomorrow
- Lost and Found

### Amnesty International

---

Amnesty International

Amnesty will meet again this Monday, September 27th at 5:30 in Acorn Cafe. This week there is only one urgent action. Everyone invited. Come drink coffee and support human rights.

Contact: Laura Vaughn, [vaughnls@wofford.edu](mailto:vaughnls@wofford.edu), x5320

### Voting information for Presidential Election November 2004

---

If you have registered to vote, please be sure you obtain your voter registration card and absentee ballot as needed.

- Please obtain your election information as soon as possible to ensure that your ballot is counted!
- Wofford College does not officially have election day off (Nov 2), so please request an absentee application if needed.
- Students may request absentee ballots if they will be in college at the time of the election.
- Your voter registration application must be postmarked by October 2nd (forms are available online SC residents at the link below)
- The deadline to request absentee applications for SC is October 27th
- The absentee ballot must be received in the county's office by November 2nd (election day) at 7:00pm
- Exactly when you should receive your absentee ballot varies by counties

Please visit <http://www.wofford.edu/publicPolicy/default.asp> for more information and specifics.

### Deadline for Beyond the City's Northern Border

---

The submission deadline for the Beyond the City's Northern Border Contest is today. Students who studied abroad during 2003-04 and are interested in sharing their experiences must submit their works to the Office of Programs Abroad by 5pm. See <http://www.wofford.edu/studyAbroad/beyondCitysNorthernBorder.asp> for eligibility requirements, selection criteria, rules, and award information.

## **Safety Rail Request Notice for Resident Students**

---

Any resident student who would like to request a safety rail for a bed that is lofted or bunked should contact the Office of Residence Life via email before 5:00 pm on Tuesday, September 28th, 2004. Please respond to neelykm@wofford.edu promptly so that this safety concern can be addressed quickly and efficiently.

Kris Neely, Director of Residence Life

## **Scoville Fellowship in DC**

---

The Scoville Peace Fellowship is a program which provides college graduates the opportunity to work in Washington, DC, with a public interest organization focusing on arms control and international security issues. The fellowship is offered in the spring and the fall and lasts from six to nine months. All application information can be found at [www.scoville.org](http://www.scoville.org).

## **SCALE Literacy Conference**

---

Make plans to attend SCALE's READ.WRITE.ACT. Conference October 1-2, 2004 in the School of Education at UNC-Chapel Hill.

Please join us for the \*only\* national conference created specifically for campus-based literacy programs, college student tutors, program coordinators, adult learners and community partners.

For more information and to register, visit <http://www.readwriteact.org/conference.html>.

## **PSA - Soup Kitchen**

---

Tuesday: Different time this week only! 6:30 pm. We meet in the Soup Kitchen, make our own sandwiches for our dinner. This is one of our favorite programs - we cook several large casseroles and put them in the freezer so when the Soup Kitchen volunteers need more food, they can go to the freezer and pull out one of our casseroles which will feed about 70 folks. So, come prepared to cook, clean or do some other organizing tasks as we seek to serve God through service to others. The Soup Kitchen is in the back of the gym at Second Presbyterian, which is across from Wofford. Please come to the back door. I will be there about 6, so if you want to come earlier - great. There is always a lot to do. Feel free to leave when you need to go. Thanks for being a part! 582/5600 [www.spartanburgpsa.org](http://www.spartanburgpsa.org)

## **Women's soccer at home tomorrow**

---

The Wofford women's soccer team entertains the Winthrop Eagles at 7:00 pm tomorrow night (Tuesday, Sept. 28) at Snyder Field. The Terriers are coming off a 3-1 win Sunday afternoon over Elon. Also, the Tropical Shaved Ice stand will be open as well with more than 40 flavors of shaved ice and other concession stand items including nachos.

Come out and show your support tomorrow night!

. . . - .

## **Lost and Found**

---

Lost: bookbag at the cookout outside of Burwell on Friday. It was a brown North Face with all of my books in it. Contact Will Barber if found.

Lost: Wofford ID card, Saturday night between the row and New Dorm, or in New Dorm. Contact Ryn Lister at [listerkj@wofford.edu](mailto:listerkj@wofford.edu) if found.

Lost: shoe that was lost @ rush in the crowd. It was black and yellow checkered. If found, please contact Peter Shand at [shandpj@wofford.edu](mailto:shandpj@wofford.edu).



**From:** Page, Jenni Brickhouse  
/O=WOFFORD COLLEGE/OU=FIRST ADMINISTRATIVE GROUP/CN=RECIPIENTS/CN=PAGEJB  
**Subject:** Daily Announcements  
**Date:** September 28, 2004 at 12:12 PM  
**To:** Wofford Faculty/Staff (WoffordStaff@Wofford.Int) WoffordStaff@Wofford.Int, Wofford Students (WoffordStudents@Wofford.Int) WoffordStudents@Wofford.Int



---

## **Wofford College Daily Announcements - Tuesday, September 28, 2004**

- Bush vs. Kerry Presidential Policy Debate
- Wofford Debate Society Founding meeting
- Alpha Phi Omega Pledge Interest Meeting
- Holy Communion
- Volunteer Opportunity with Museum of the New South
- Guitarist Ana Vidovic
- Intramural Terrier Tag
- Newman Club
- Lost and Found

### **Bush vs. Kerry Presidential Policy Debate**

---

Who cares where they were or what they did when they were 21. There ARE issues at stake! Come witness Wofford students debate the two candidates' positions on important issues. The Debate will be held on Thursday, October 7 at 7:00 pm in Leonard Auditorium.

### **Wofford Debate Society Founding meeting**

---

The newly chartered Debate Society will hold its founding meeting on Thursday, September 30 at 8:00 pm in Olin Theatre. If you are interested in being a part, feel free to attend. We will look at the history of debate at Wofford (19th century), discuss the future of the Debate Society (looking to structure the society after the Oxford Union and the Georgetown Philodemic Society), and discuss plans for the upcoming Presidential Policy Debate. If you have any questions, email Marion at [smithsm@wofford.edu](mailto:smithsm@wofford.edu).

### **Alpha Phi Omega Pledge Interest Meeting**

---

There will be an interest meeting for APO, the service organization, next Monday (October 4) at 8:15 pm in the top of campus life (lobby 2). Anyone wanting to join for the fall of 2004 should come. If you cannot come, contact [hyslopjr@wofford.edu](mailto:hyslopjr@wofford.edu) for more information.

### **Holy Communion**

---

Everyone is invited to attend Holy Communion every Tuesday, 5:15 p.m., Mickel Chapel.

### **Volunteer Opportunity with Museum of the New South**

---

College students in history, communications or education are eligible to apply to the Levine Museum of the New South (in Charlotte, NC) for tour guide opportunities. For information on the museum, see [www.museumofthenewsouth.org](http://www.museumofthenewsouth.org); to contact the tour coordinator, go to [kmurrav@museumofthenewsouth.org](mailto:kmurrav@museumofthenewsouth.org)

---

### **Guitarist Ana Vidovic**

---

Ana Vidovic, a guitar prodigy now in her early twenties, is giving a solo recital for the Troubadour Series, Wednesday, September 29, at 7:00 pm in the Papadopoulos Building. Please go to [www.anaavidovic.com](http://www.anaavidovic.com) for a look at this important young artist from Croatia.

---

### **Intramural Terrier Tag**

---

Due to the bad weather this week, Intramural Terrier Tag will not start this week and will begin next Monday, October 4. Therefore, I am extending the time to submit a roster until Thursday September 30 at 5:00 PM. After this time, no team will be allowed to enter the league because the schedule will be complete. So please email me a roster if you wish to submit a team and have not done so. Women are strongly encouraged to participate as there will be a women's league. Please contact Brandon McKillop with any questions or concerns.

---

### **Newman Club**

---

Newman Club will meet on Wednesday, September 29 at 5:15 p.m. in the Student Life Building in Lobby 2 (upstairs). Joe Kirsimagi from St. Paul's is our guest speaker this week.

---

### **Lost and Found**

---

Lost: a phone last night between Shipp and Milliken running in the rain. If anyone has found it can you please contact me at [FrantzTR@Wofford.edu](mailto:FrantzTR@Wofford.edu).

Lost: my big Wofford umbrella last week. It was at the bottom of the stairs in Burwell behind the vent. I forgot it when I left Burwell so hopefully someone picked it up. Please contact me at [KilbourneAW@wofford.edu](mailto:KilbourneAW@wofford.edu) if found.

Found: A pearl earring was found at Skylyn Place last week. To claim, contact Colleen Henry, ext. 4063

**From:** Page, Jenni Brickhouse  
/O=WOFFORD COLLEGE/OU=FIRST ADMINISTRATIVE GROUP/CN=RECIPIENTS/CN=PAGEJB  
**Subject:** Daily Announcements  
**Date:** September 29, 2004 at 11:31 AM  
**To:** Wofford Faculty/Staff (WoffordStaff@Wofford.Int) WoffordStaff@Wofford.Int, Wofford Students (WoffordStudents@Wofford.Int) WoffordStudents@Wofford.Int



---

## **Wofford College Daily Announcements - Wednesday, September 29, 2004**

- Wofford Debate Society Founding Meeting
- WAC Tailgate Party
- Spring 2005 Study Abroad Deadline
- This Saturday - Heather Mitchell sings
- Reminder from Career Services:
- Newman Club
- Dance Team Try-Outs
- Interim travel projects
- Canterbury of Spartanburg
- Auditions for Interim Musical
- Lost and Found

### **Wofford Debate Society Founding Meeting**

---

The newly chartered Debate Society will hold its founding meeting on Thursday, September 30 at 8:00 pm in Olin Theatre. If you are interested in being a part, feel free to attend. We will look at the history of debate at Wofford, discuss the future of the Debate Society (looking to structure the society after the Oxford Union and the Georgetown Philodemic Society), and discuss plans for the upcoming Presidential Policy Debate. If you have any questions, email Marion at [smithsm@wofford.edu](mailto:smithsm@wofford.edu).

### **WAC Tailgate Party**

---

All Wofford students are invited to come out this Saturday before kick-off for a tailgate party! It will be in the Student Tailgating Lot from 4-7. There will be plenty of free food and fun as we get pumped to beat Chattanooga.

### **Spring 2005 Study Abroad Deadline**

---

This is a reminder that all Spring 2005 application materials are due in the Office of Programs Abroad by Friday, Oct. 1 at 5:00 pm. If you have questions, contact Amy Lancaster at x. 4026.

### **This Saturday - Heather Mitchell sings**

---

Wofford's own Heather Mitchell will be performing at Nacho Mama's, 1200 East Main Street (582-2800), on Saturday, October 2 from 7-9pm. Heather puts her accomplished voice to work on a wide array of acoustic arrangements, both classic and contemporary. So, please come out and support her contribution to our local music scene.

### **Reminder from Career Services**

---

USC School of Law will hold information appointments on Monday, Oct. 4 in the Career Services Office. Come by today to sign up for a 20-minute appointment. Also on Monday, the UNC-Chapel Hill business school will have an information table in Burwell to discuss their 12-month MAC program for non-accounting majors.

### **Newman Club**

---

Newman Club will meet on Wednesday, September 29 at 5:15 p.m. in the Student Life Building in Lobby 2 (upstairs). Joe Kirsimagi from St. Paul's is our guest speaker this week.

### **Dance Team Try-Outs**

---

Any student interested in trying out for the 2004-05 dance team will need to sign up by contacting Heather Morrow by 5pm today (Wednesday). The first practice will be held Wednesday night from 7-8:30pm in the aerobics room in Richardson.

### **Interim Travel Projects**

---

Students who were not selected for the travel project of their choice for Interim 2005 will have an opportunity to make a second choice today, Wednesday, September 29. Projects with space available are listed at [www.wofford.edu/interim/travelProjects.asp](http://www.wofford.edu/interim/travelProjects.asp). Please contact the faculty sponsor to find out about the selection criteria for the project and the non-refundable deposit. Be aware that your deposit indicates your firm commitment to a project, and therefore you may submit to ONLY ONE project.

### **Canterbury of Spartanburg**

---

Canterbury of Spartanburg will be meeting this evening at St. Matthew's Episcopal Church (across from Barnes & Noble). We'll start things off with contemporary worship at 6:30, and then have dinner and discussion afterwards. If you have any questions, please contact Karla Parris at [parriskn@wofford.edu](mailto:parriskn@wofford.edu) or ext. 4181.

### **Auditions for Interim Musical**

---

Acting and singing auditions for the Interim production of the hilarious Stephen Sondheim musical *A Funny Thing Happened on the Way to the Forum* will be held on Thursday at 11:00am and 7:30pm in Daniel 107 in the Music Department. For the audition, please prepare thirty-two (32) bars of a song which shows off your voice to its best advantage. You may bring a performance resume if you have one. There is no need to prepare a monologue; sides will be available for cold readings. We are looking for lots of performers so if you can't make it to either of these auditions, or if you would like to participate in a non-acting or back-stage capacity (pit-orchestra, stage management, costumes, make-up, build/tech/run-crew), please contact Dr. Ferguson at [fergusonma@wofford.edu](mailto:fergusonma@wofford.edu).

## Lost and Found

---

Lost: Green disposable camera lost Saturday at the row. It has "Ellen" written on it. Please email me at [ThraillLE@wofford.edu](mailto:ThraillLE@wofford.edu) if found.

Lost: eyeglasses in the rain Monday night somewhere around the Evin's Street parking areas. If found, please email at [Willarddd@wofford.edu](mailto:Willarddd@wofford.edu) or call ext. 5435.

**From:** Page, Jenni Brickhouse  
/O=WOFFORD COLLEGE/OU=FIRST ADMINISTRATIVE GROUP/CN=RECIPIENTS/CN=PAGEJB  
**Subject:** Daily Announcements  
**Date:** September 30, 2004 at 1:22 PM  
**To:** Wofford Faculty/Staff (WoffordStaff@Wofford.Int) WoffordStaff@Wofford.Int, Wofford Students (WoffordStudents@Wofford.Int) WoffordStudents@Wofford.Int



---

## Wofford College Daily Announcements - Thursday, September 30, 2004

- Salvation Army Band at Sunday Worship
- Wofford STARTS
- Light the Night Walk
- FCA Tonight
- Bible Fellowship in Zach's
- Teaching Interview - Oct. 4
- Lost and Found

### Salvation Army Band at Sunday Worship

---

The entire college community is strongly encouraged to attend worship in Leonard Auditorium this Sunday. We will have the internationally acclaimed Salvation Army Band leading us in a hymn sing. This will be an inspiring and meaningful time for all. Please attend and encourage your fraternities, sororities, teams and clubs to come as a group. You'll be glad you did!

### Wofford STARTS

---

Wofford STARTS (Students in the Arts) is a service organization which hosts a Boys' and Girls' club once a month and leads them in arts activities. If you have any ability or interest in music/theatre/art and would like to participate, please contact Prof. Christi Sellars ([sellarscv@wofford.edu](mailto:sellarscv@wofford.edu)) to learn more about becoming involved.

### Light the Night Walk

---

Information about the Light the Night Walk fundraiser to raise money for Leukemia and Lymphoma society has been floating around campus. Don't worry because there is still a week left to get involved to help for this great cause. You can very easily start your own team with friends or hop onto the fundraising team bandwagon creatively named team "Wofford". Please donate some of your time, money, and energy to raise money for a cause that can very easily affect any of you or ones that you love. Email [Underhillme@wofford.edu](mailto:Underhillme@wofford.edu) or call ext 4951 to start your own team, join Wofford's, and begin raising money!

### FCA Tonight

---

Join us tonight at Player's Corner at 8:30 PM. You do not have to be an athlete to come. Everyone is welcome. Darrin Goss, Director of Multicultural Affairs at Wofford will be the guest speaker tonight. He will be speaking on the importance of prayer. Love to see you there.

### Bible Fellowship in Zach's

---

Thursday, PSA meets in Zach's at 5:15 pm for student led Bible Fellowship. All are invited.

## **Teaching Interview - Oct. 4**

---

Southern Teachers Agency, the oldest independent teacher placement service in America, will hold interviews in the Career Services Office on Wed, Oct. 13, for teachers, coaches and counselors in private/independent schools in the south. Teacher certification is not required. Please submit a resume to Career Services by Thurs., Oct. 7 and sign up for an interview time. They are particularly interested in science, education and language (including English) majors.

## **Lost and Found**

---

Lost: A grey Nokia cell phone with white paint on it. The display says Tracfone. If found, please contact Ryan Hill at [HillRG@wofford.edu](mailto:HillRG@wofford.edu) or call my room ext. 5060.

Lost: a jean jacket in Andrews Field House on Wednesday. If found email [powellef@wofford.edu](mailto:powellef@wofford.edu) or call 5416.

Lost: green Gap book bag at the row on Saturday. Please email [smithbp@wofford.edu](mailto:smithbp@wofford.edu) if found.